

Bordentown Township

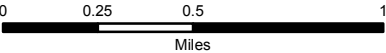
Map 3: NJDEP Land Cover (2007)

Acres are listed in Table 1.

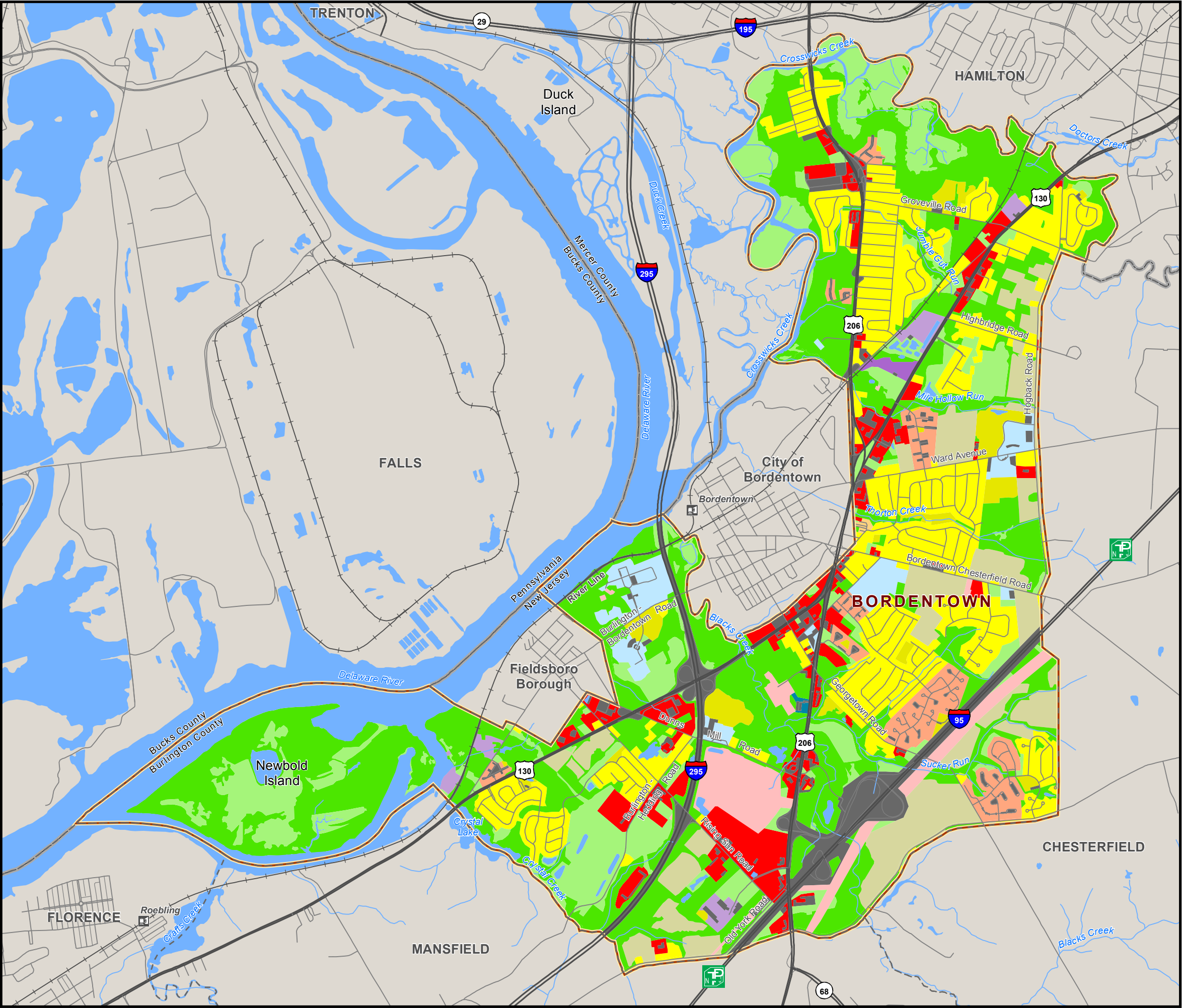
- Surface Water
- Stream

NJDEP Land Cover (2007)

- Agriculture
- Barren Land
- Forest
- Developed
- Water
- Wetlands



Source : NJDEP, NJDOT, DVRPC, TANA.
This map was developed using New Jersey Department of Environmental Protection Geographic Information System digital data, but this secondary product has not been verified by NJDEP and is not state-authorized.

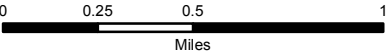


Bordentown Township

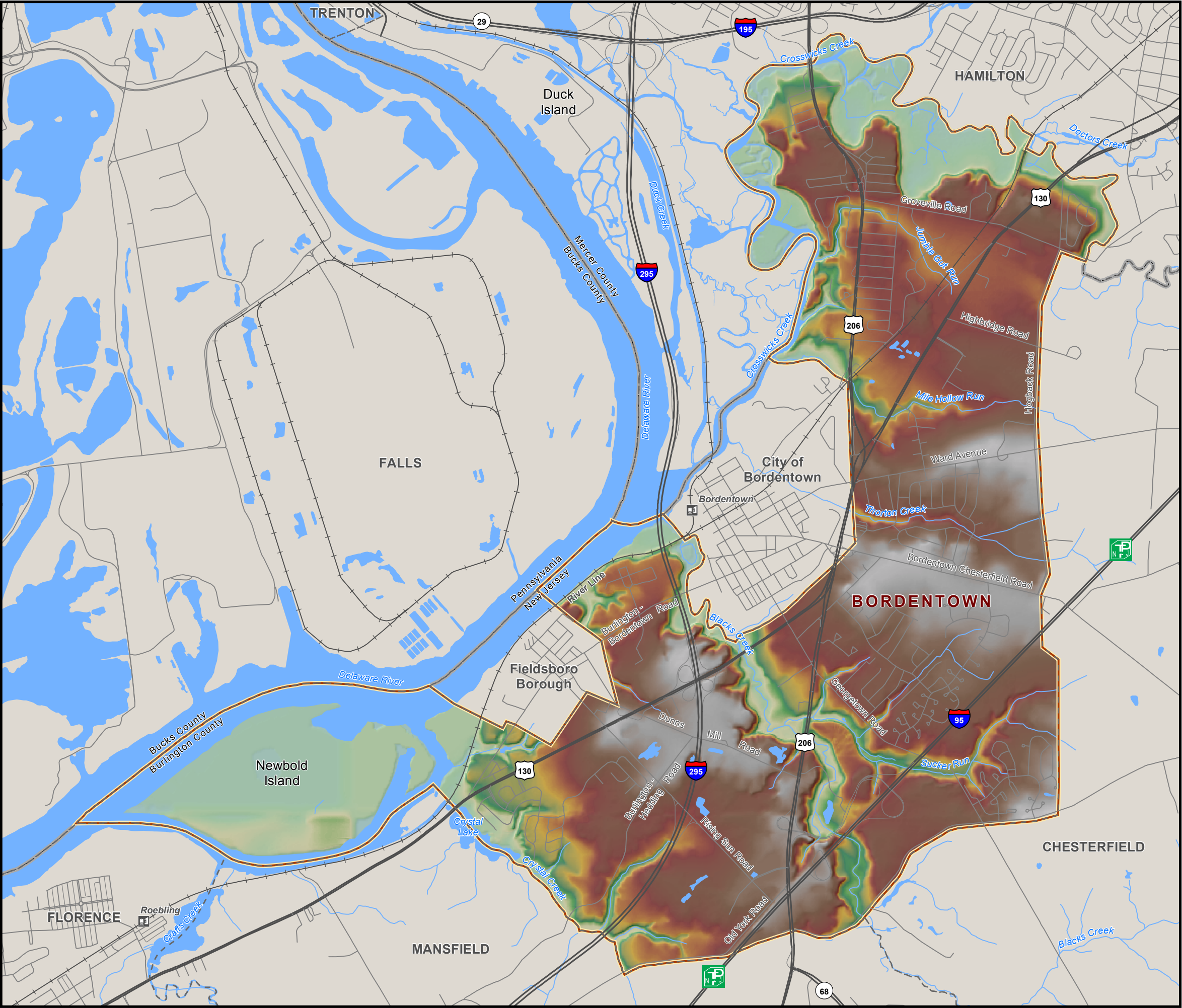
Map 4: DVRPC Land Use (2010)

Acres are listed in Table 2.

- Single Family
- Multi-Family
- Mobile Home
- Light Manufacturing
- Heavy Manufacturing
- Utility
- Commercial
- Community
- Parking and Transportation
- Military
- Recreation
- Agriculture
- Wooded
- Vacant
- Water

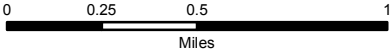


Source : NJDEP, NJDOT, DVRPC, TANA.
This map was developed using New Jersey Department of Environmental Protection Geographic Information System digital data, but this secondary product has not been verified by NJDEP and is not state-authorized.



Bordentown Township

Map 5: Elevation



Source : NJDEP, NJDOT, DVRPC, TANA.
This map was developed using New Jersey Department of Environmental Protection Geographic Information System digital data, but this secondary product has not been verified by NJDEP and is not state-authorized.