

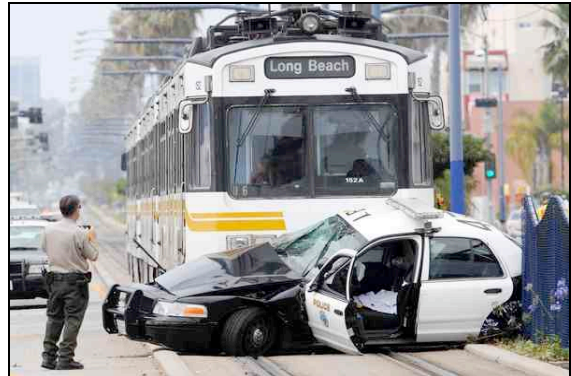
SAVE CRENSHAW FROM MTA

**Make MTA Change their Crenshaw Blvd Street-Level Plan to a Subway
Make MTA Put a Station on the Rail Line at Leimert Park Village**

Donate Today to our Legal Fund to Protect the Future of L.A.'s Last Black Business Corridor



DEMAND MTA BUILD IT UNDERGROUND



FIGHT AGAINST STREET-LEVEL



DEMAND A LEIMERT PARK STATION

UPDATE (Oct 21, 2011):

*Crenshaw Subway Coalition Files
Lawsuit Against MTA to Protect the
Future of Crenshaw Bl. & Leimert Park*

For more info:

ATTEND OUR NEXT MEETING

MONDAY, NOV. 7 6-8 PM
Crenshaw DWP Auditorium
4030 Crenshaw Blvd, LA 90008
(Near MLK next to Krispy Kreme)

*MTA wants to begin building the Crenshaw-to-LAX Rail
Line down the middle of Crenshaw Blvd in 2012*

The Problem:

- 225-ton trains traveling 35 mph down the middle of Crenshaw Blvd from 48th to 60th Street
- Crossing streets every 2 ½ mins during rush hour
- Safety: Major schools (View Park Prep & Crenshaw H.S.), day cares and senior centers
- 5-6 long yrs of *disruptive* street-level construction
- Half the business parking spaces (308) *GONE!*
- Increased traffic congestion & closed-off streets
- No more tree-lined median!
- Tall *prison-like fences* dividing Crenshaw!
- No Station at Leimert Park Village!!!

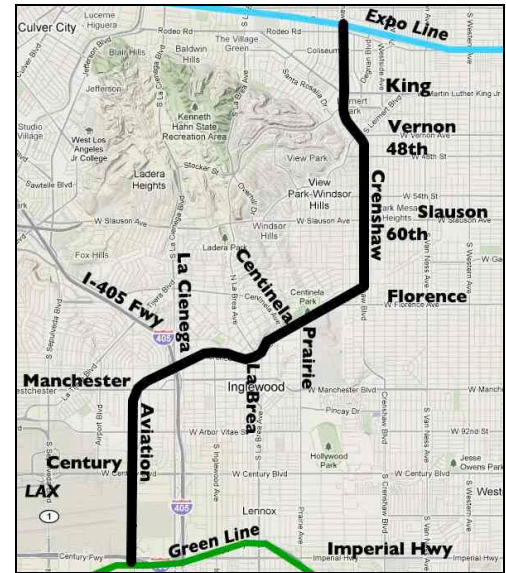
The Solution:

- **Build it Underground on Crenshaw Blvd**
- **With a Station at Leimert Park Village**

***We Need Your Help: Call (323) 761-6435 &
Go to www.CrenshawSubway.org for Info***

MTA/VILLARAIGOSA'S ATTACK ON CRENSHAW BLVD

- **DISRUPTIVE:** 5-6 long years of street-level construction from 48th to 60th Street. The entire Crenshaw business district will be killed. People won't want to travel through, let alone shop in the middle of a busy & dusty Crenshaw Bl. construction zone.
- **DANGEROUS:** 225-ton trains traveling 35 mph down the middle of Crenshaw Blvd right in front of View Park Prep and a block away from Crenshaw H.S. MTA's street-level Blue Line has already **killed 103 people and been in over 900 accidents**.
- **DESTRUCTIVE:** Transform our tree-lined street into a prison-like place without enough parking by cutting down mature trees, erecting fences & utility lines, eliminating 308 parking spaces, closing off streets, and getting rid of left-turns. People won't want to return to a divided industrial-looking Crenshaw with no place to park & unsafe trains barreling down the street.
- **DISRESPECTFUL:** No station at Leimert Park Village. MTA has built rail stations at numerous other cultural centers, like Olvera Street, Mariachi Plaza, Little Tokyo and Chinatown. Bypassing the African-American cultural center of Los Angeles is just plain wrong.



ABOUT THE CRENSHAW SUBWAY COALITION

The Crenshaw Subway Coalition is an all-volunteer nonprofit led by Crenshaw corridor residents, merchants, property owners and stakeholders. We have three objectives as an organization: (1) ensuring the Crenshaw-LAX Rail Line is built in a manner requested by the community: **UNDERGROUND ON CRENSHAW BLVD WITH A STATION AT LEIMERT PARK VILLAGE**; (2) ensuring the rail line is built by people in the community; and (3) ensuring the Crenshaw Blvd revitalization effort is community-driven.

WHY YOUR DONATIONS ARE IMMEDIATELY NEEDED FOR OUR LAWSUIT AGAINST MTA

After the 5/26/11 MTA board meeting, where L.A. Mayor Antonio Villaraigosa led the charge against funding the subway option from 48th to 60th Street in Park Mesa Heights and a station at Leimert Park Village, it was clear that **friendly negotiations with the MTA will not work on this issue**. To protect the future of Crenshaw Blvd and Leimert Park Village we have taken the matter above the Mayor to the courts.

Before MTA can operate the Crenshaw-LAX Rail Line, state and federal environmental laws require the agency to complete a comprehensive environmental study. It must also comply with civil rights laws. **In our lawsuit our attorneys point out twelve (12) major legal violations** in the Crenshaw-LAX Line environmental study that have led to the current unacceptable design. **It takes a judge validating JUST ONE of our objections to overturn MTA's approvals and delay the project by years**. The construction delay would cost MTA more than simply doing what the community requests: changing the street-level plan to a full Crenshaw Blvd subway and returning the Leimert Park Village station to the project.

A large cost of our lawsuit is the preparation of the administrative record (all the memos, studies, correspondence, etc. recorded by MTA for the project over the past 4 years). We anticipate this will be a **minimum \$25,000**. We are fundraising to cover this cost **by 11/30/11**. **PLEASE DONATE GENEROUSLY**.

Send Checks to: Crenshaw Subway Coalition P.O. Box 432181, Los Angeles, CA 90043
Or Donate on the Web: www.CrenshawSubway.org ■ For More Info Call (323) 761-6435