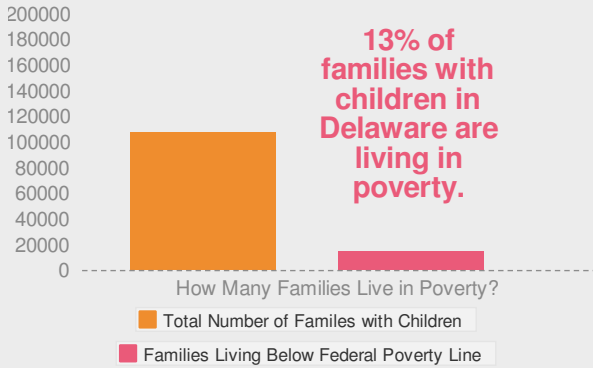




TANF Payments and Fair Market Rent

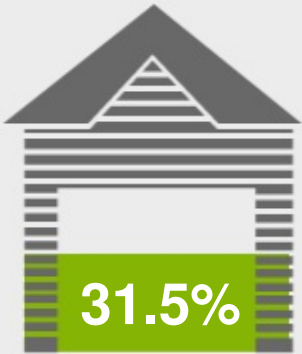
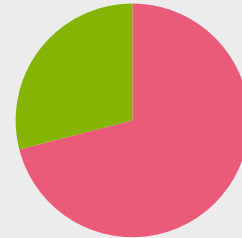
How far do Temporary Assistance for Needy Families (TANF) payments really go?

Delaware



13% of families with children in Delaware are living in poverty.

For every 100 families living in poverty in Delaware, about 29 received TANF payments in 2012.



TANF payments in Delaware will cover about 31% of a family's monthly rent.

TANF payments are not enough to help needy families pay the rent and other basic living expenses.

\$338*

Highest possible TANF payment for a single parent family of three

*If a family has any income, that amount will be deducted from their TANF payment.

\$1,073

Fair Market Rent for a 2-bedroom apartment in Alaska

That's one reason that 119 families with children were homeless in Delaware in January 2013.

What can we do?



Increase TANF payments to protect families from homelessness



Use TANF to quickly re-connect homeless families to housing through emergency assistance



Support families with the greatest needs by removing barriers to TANF



Use TANF to create subsidized jobs and provide work supports for families living in poverty



Strengthen connections among welfare-to-work, job training, and homeless assistance programs

Sources:

We would like to extend a special thank you to the Center on Budget Policy Priorities for providing guidance in our research, data on TANF payments, and poverty to TANF recipient ratios.

All other sources can be found on our website at: www.funderstogether.org



Funders Together
TO END HOMELESSNESS