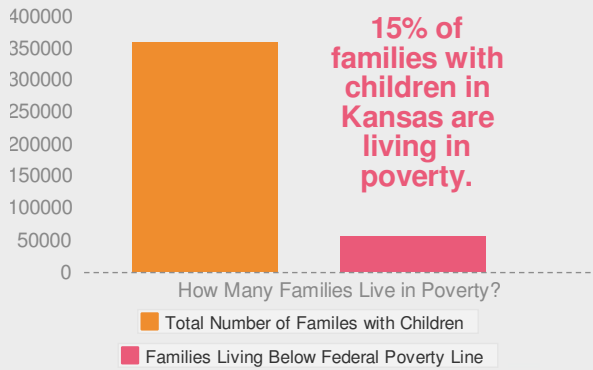




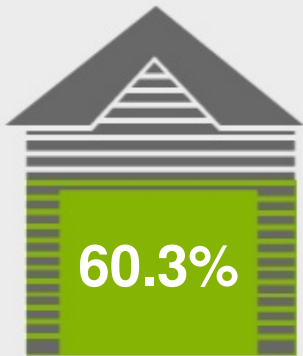
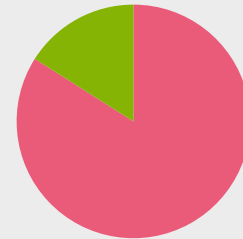
# TANF Payments and Fair Market Rent

How far do Temporary Assistance for Needy Families (TANF) payments really go?

## Kansas



For every 100 families living in poverty in Kansas, about 16 received TANF payments in 2012.



TANF payments in Kansas will cover about 60.3% of a family's monthly rent.

**\$429\***

Highest possible TANF payment for a single parent family of three

\*If a family has any income, that amount will be deducted from their TANF payment.

**\$712**

Fair Market Rent for a 2-bedroom apartment in Kansas

TANF payments are not enough to help needy families pay the rent and other basic living expenses.

**That's one reason that 387 families with children were homeless in Kansas in January 2013.**

Kansas is one of a handful of States where TANF payments differ by county. This graphic only shows one level. Find all levels here: [http://funderstogether.org/kansas\\_tanf](http://funderstogether.org/kansas_tanf)

## What can we do?



**Increase TANF payments to protect families from homelessness**



**Use TANF to quickly re-connect homeless families to housing through emergency assistance**



**Support families with the greatest needs by removing barriers to TANF**



**Use TANF to create subsidized jobs and provide work supports for families living in poverty**



**Strengthen connections among welfare-to-work, job training, and homeless assistance programs**

Sources:

We would like to extend a special thank you to the Center on Budget Policy Priorities for providing guidance in our research, data on TANF payments, and poverty to TANF recipient ratios.

All other sources can be found on our website at: [www.funderstogether.org](http://www.funderstogether.org)