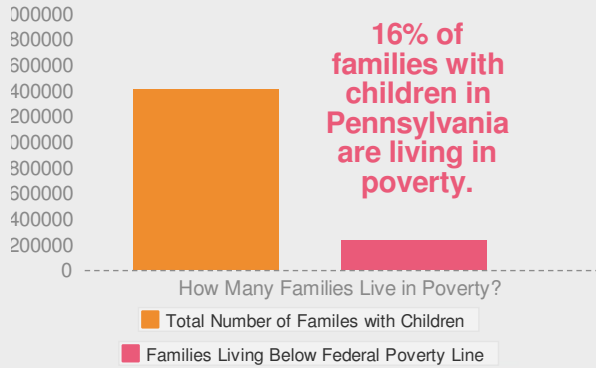




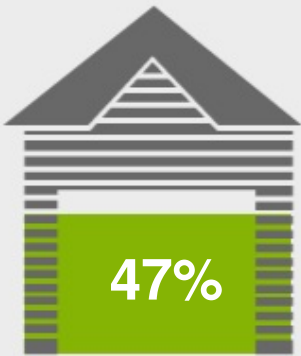
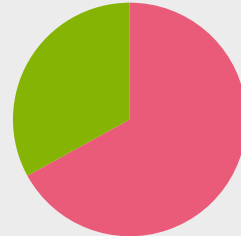
TANF Payments and Fair Market Rent

How far do Temporary Assistance for Needy Families (TANF) payments really go?

Pennsylvania



For every 100 families living in poverty in Pennsylvania, about 33 received TANF payments in 2012.



TANF payments in Pennsylvania will cover about 47% of a family's monthly rent.

\$421*

Highest possible TANF payment for a single parent family of three

*If a family has any income, that amount will be deducted from their TANF payment.

\$895

Fair Market Rent for a 2-bedroom apartment in Pennsylvania

TANF payments are not enough to help needy families pay the rent and other basic living expenses.

That's one reason that 2,409 families with children were homeless in Pennsylvania in January 2013.

Pennsylvania is one of a handful of States where TANF payments differ by county. This graphic only shows one level. Find all levels here: http://funderstogether.org/pennsylvania_tanf

What can we do?



Increase TANF payments to protect families from homelessness



Use TANF to quickly re-connect homeless families to housing through emergency assistance



Support families with the greatest needs by removing barriers to TANF



Use TANF to create subsidized jobs and provide work supports for families living in poverty



Strengthen connections among welfare-to-work, job training, and homeless assistance programs

Sources:

We would like to extend a special thank you to the Center on Budget Policy Priorities for providing guidance in our research, data on TANF payments, and poverty to TANF recipient ratios.

All other sources can be found on our website at: www.funderstogether.org