



Purple

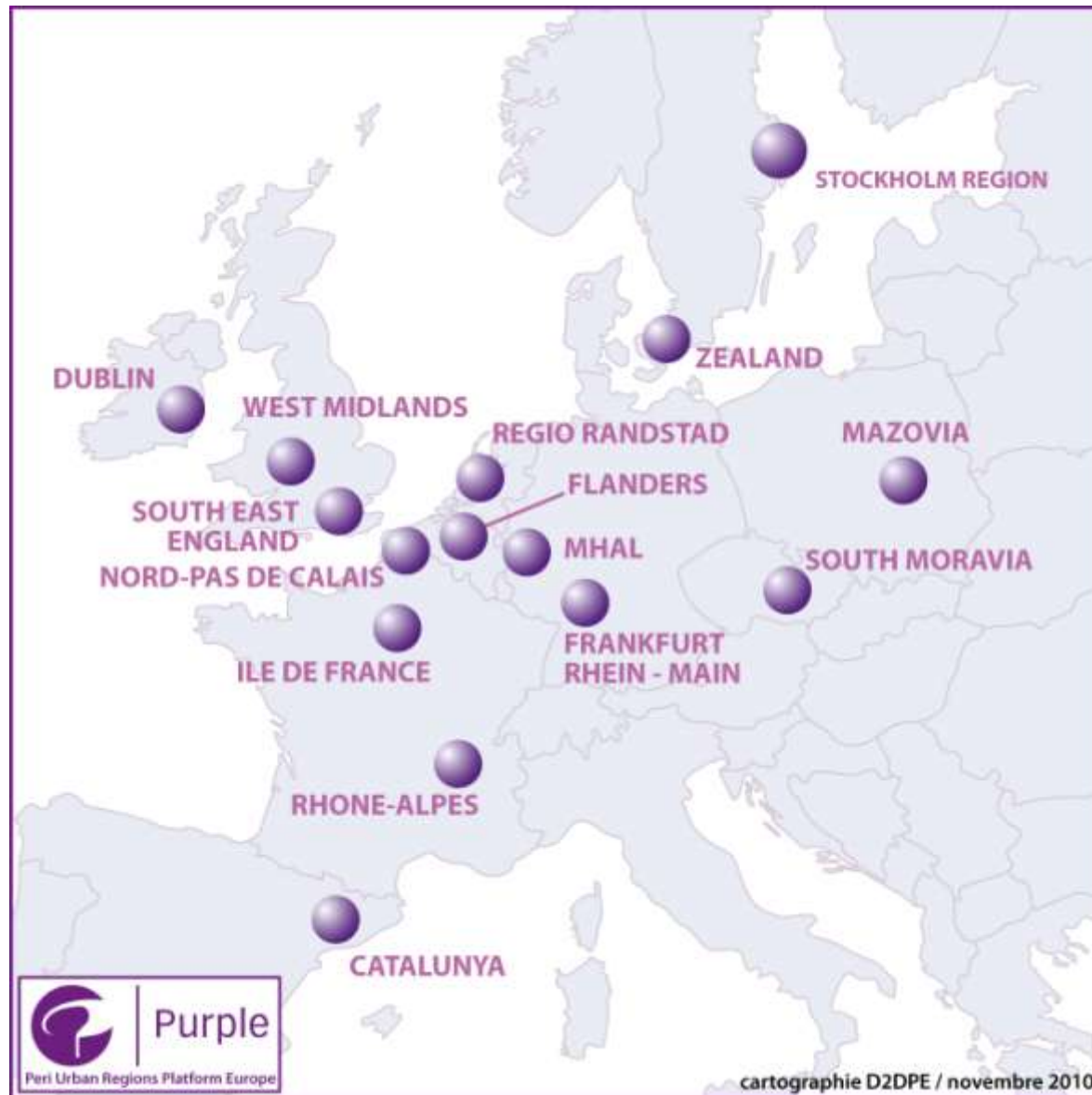
*Peri-Urban Regions Platform Europe*

# The PURPLE network – a voice for peri-urban regions

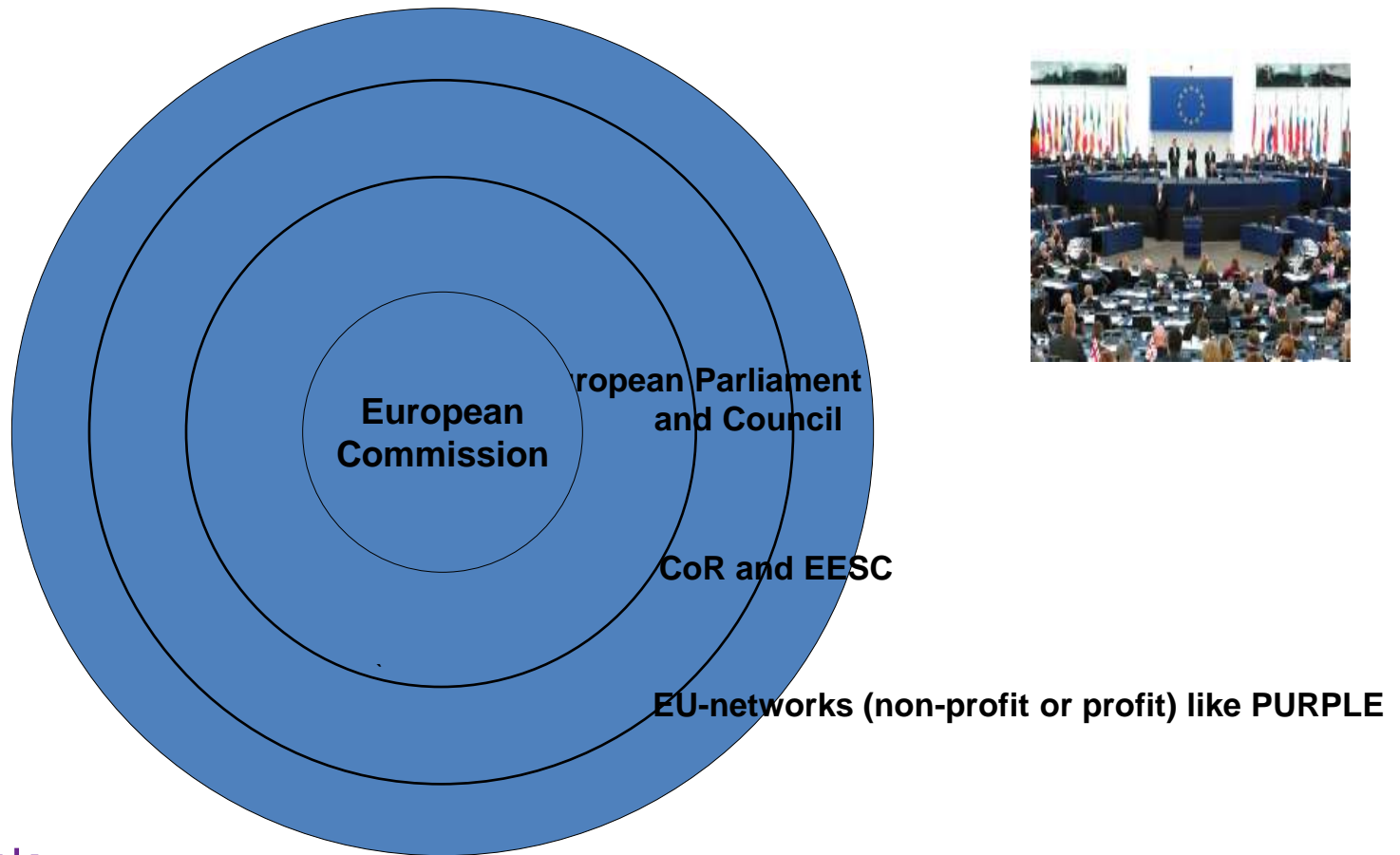
Lenie Dwarshuis, Vice President, PURPLE



# PURPLE members



# Key-players in the EU



# The Brussels arena



# PURPLE characteristics - *crowded areas!*

- Proximity to cities and large populations
- Mixed commercial development (eg businesses, services, logistics) as well as housing, shops, hospitals, schools...
- Research and innovation clusters
- Mixed land use – with farming and food production and open space
- Attractive and convenient place to live and work - perceived high quality of life
- Location for resources for cities (eg water, aggregates)
- Major infrastructure (transport, energy, waste)

.....Need for integrated policies

.....Need for tailor-made policies

.....Need for balanced development



# A policy agenda for peri-urban areas - *a mix of challenges and opportunities*

- Urban sprawl, soil sealing
- Food strategies – healthy eating, procurement, regional branding
- Food security – supplies and short food chains – a balance ‘global’ and ‘local’
- Landscape conservation and cultural identity – ‘how it looks’
- Open space - for population well-being, including recreation
- Loss/degradation of productive agricultural land and open space - need for green infrastructure
- Environmental issues – soil, air, biodiversity ....
- Realising potential of bio-energy and other new ‘agri’ opportunities
- Demographic changes and migration
- Commuting into cities, and also across peri-urban areas too
- Development and location of infrastructure
- Water – quality and quantity (too much, too little)

*.....and many of these need links to neighbouring ‘city’ policies*



# PURPLE actions

## **Understanding** peri-urban

*....linking to relevant research, mapping, collecting data and examples and making comparisons*

## **Information/knowledge exchange** on peri-urban

*....sharing project experience, organising conferences/study visits, linking to other expert networks and organisations*

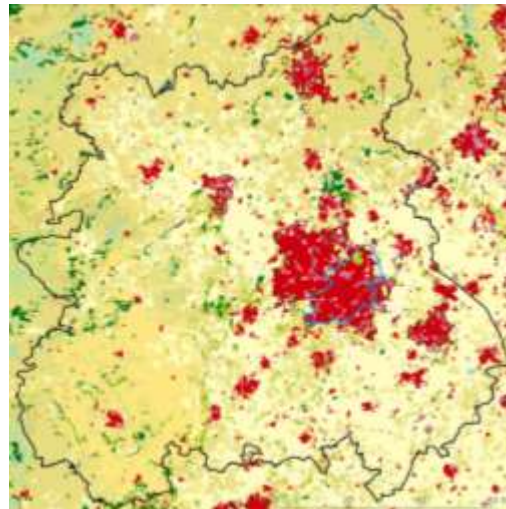
## **Recognition** for peri-urban

*....regular events, issuing political statements and 'positions', meetings with European politicians and officials and visibility in key European policy documents*

# Mapping peri-urban regions



Randstad



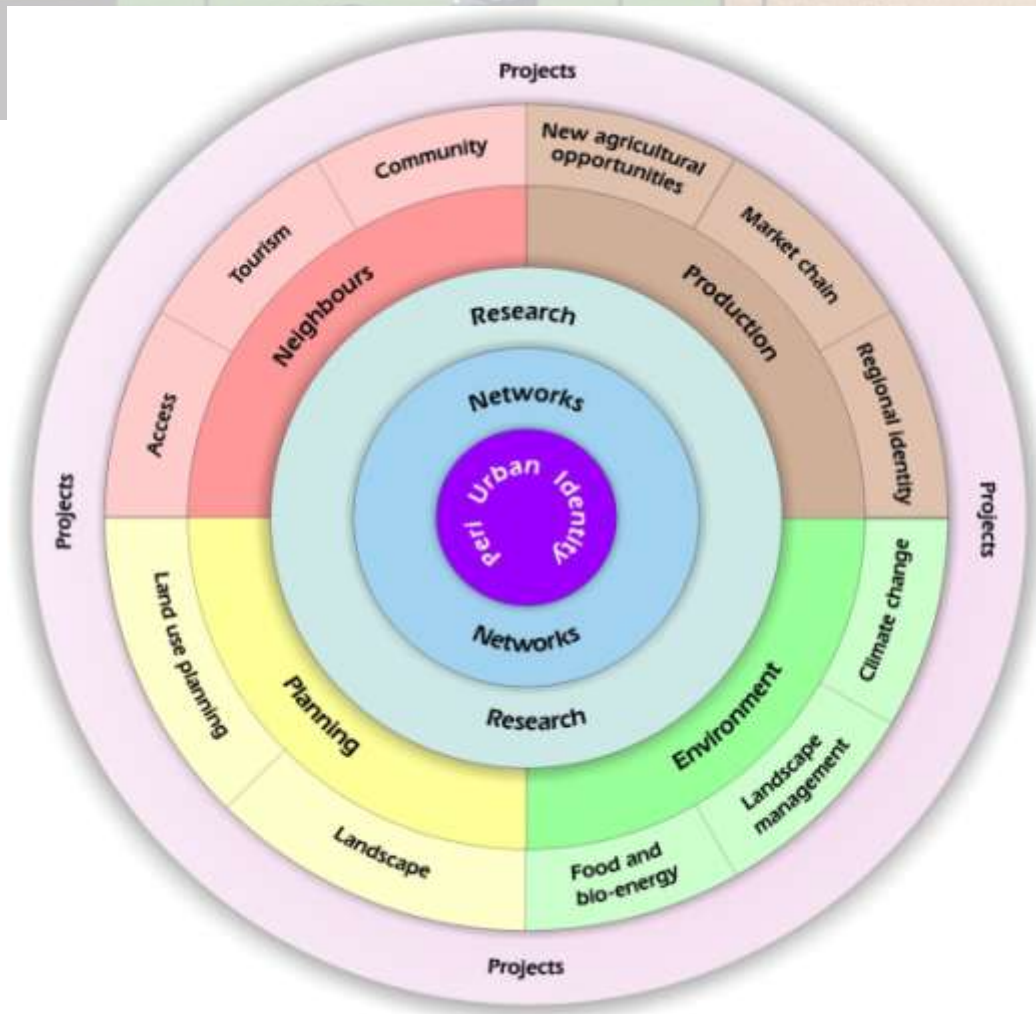
Mazovia



Flanders



# PURPLE's rounded vision...



Examples.....

# Local food systems

## Link between urban and peri-urban



Examples.....

# The capacity of peri-urban areas to adapt to Climate change





# Conclusions

- Need for policy recognition. *Urban doesn't stop - and rural start - at the edge of cities.*
- Better contacts/relationships/understanding to manage conflicts and develop tailor-made policies
- Fitting peri-urban into EU thinking!



*Peri-Urban Regions  
Platform Europe*

[www.purple-eu.org](http://www.purple-eu.org)

**Thank you**

