

Nature, Water and Biodiversity in the Netherlands



**Cheryl de Boer & Hans Bressers
University of Twente, Institute for
Innovation and Governance Studies**

Overview



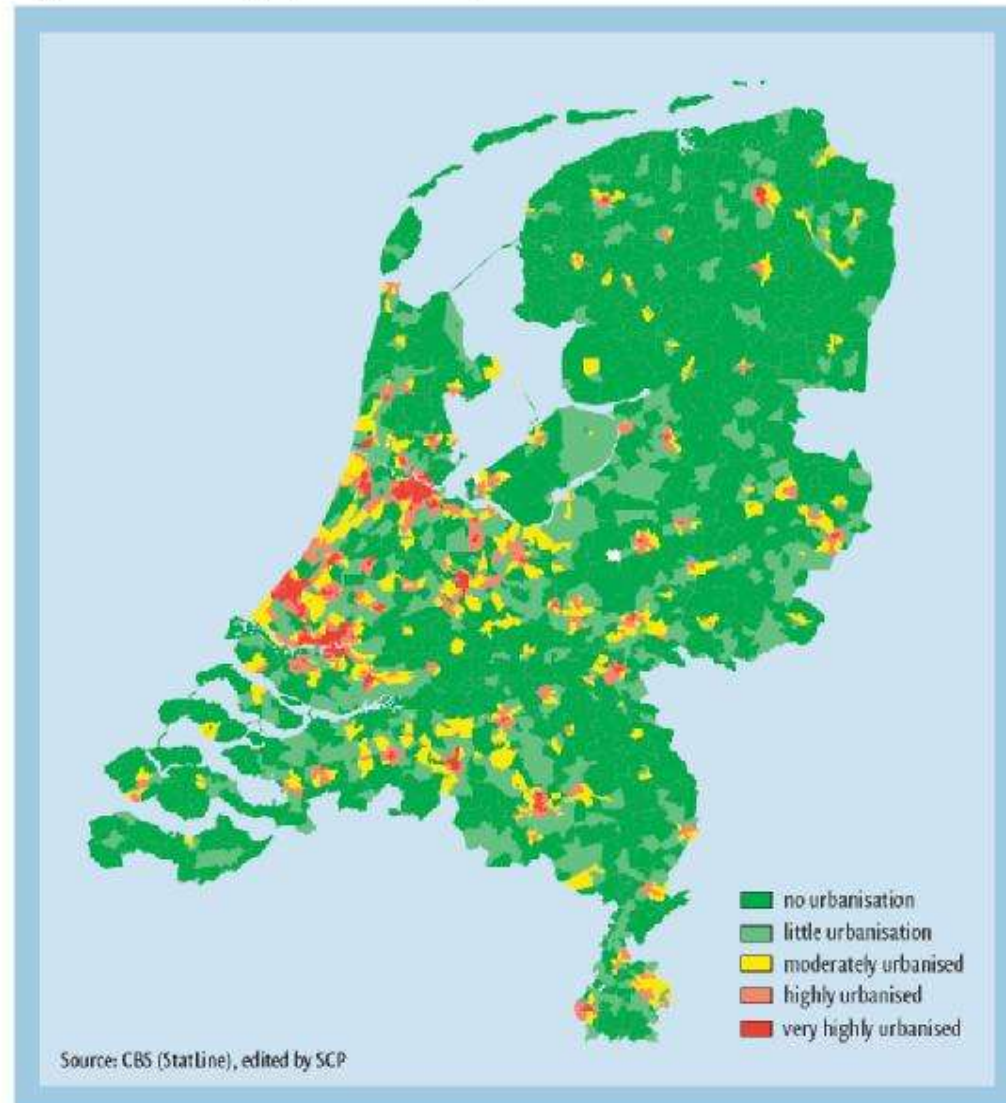
- **The Dutch context**
- **Regge Restoration**
- **Effective Local Strategies**

National Context

- High population density
- Continual struggle “Against” Water
- Strong Government Influence through Land Use Planning

Figure 1b

Degree of urbanisation per postal code area, 2004

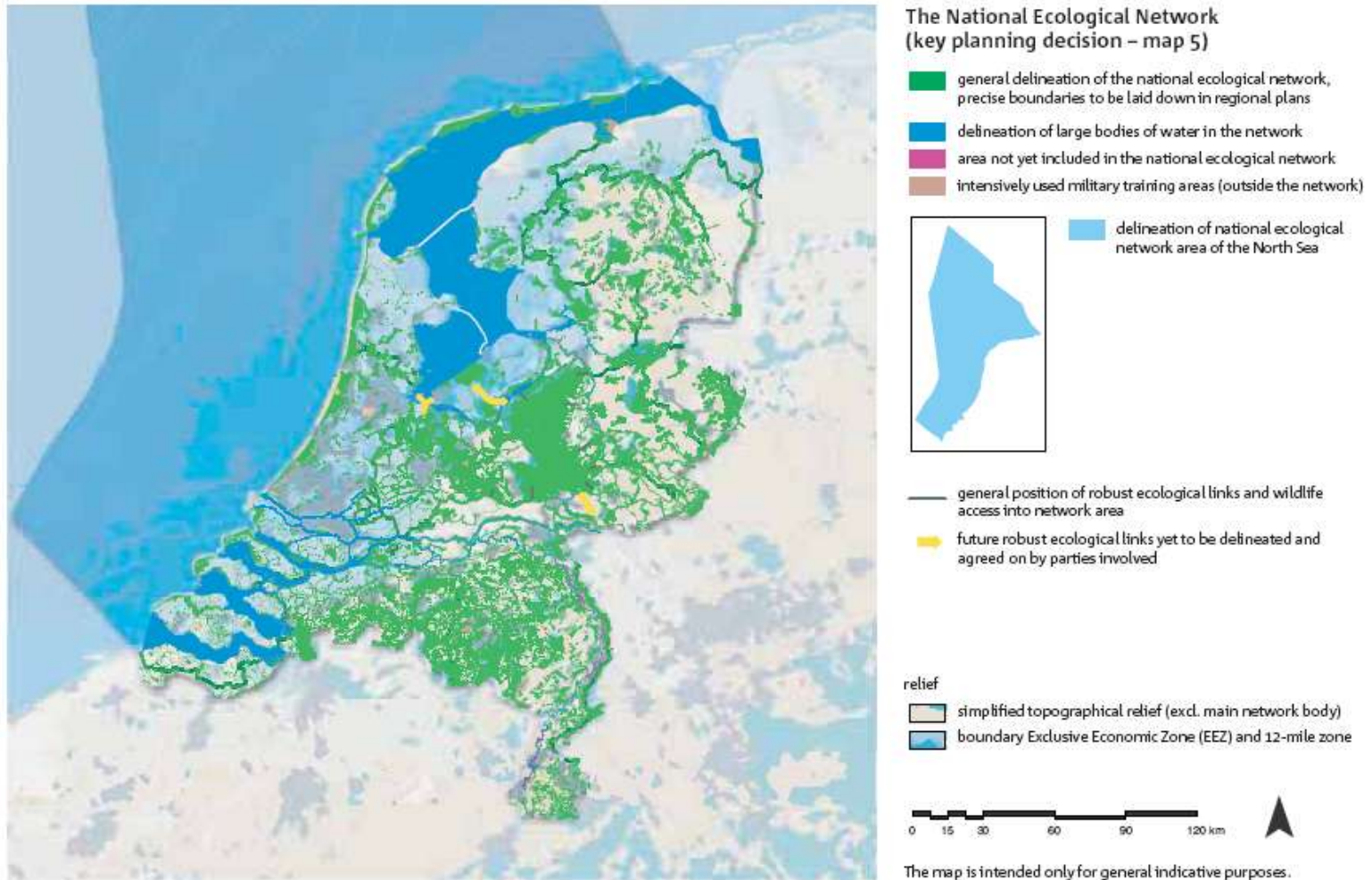


Current Issues

- Water, Nature, Recreation, Urban Development, Agriculture
- Competing for the same space



Ecologische Hoofd Structuur (National Ecological Network)





Zwolle



Uitmonding Regge in Overijsselse Vecht

Project 'Velderberg'



Nordhorn

Project Veldkamp



Almelo

Waterschap Regge en Dinkel

Deventer

Hengelo

Gebouw Waaier

Gronau (Westfalen)



Inlaat Schipbeek (Begin Regge)

© 2010 Tele Atlas

Image © 2010 Aerodata International Surveys

Image © 2010 GeoContent

© 2010 Google

Vreden

©2010 Google

Regge Restoration

A photograph of a rural landscape. In the foreground, a person wearing a green jacket and light-colored pants is walking away from the camera on a dirt path. To the right, three horses are grazing: a brown one, a black one, and a light-colored one. The background shows a grassy field with a fence line and a line of bare trees under an overcast sky.

- Increased water storage
- Increased complexity
 - > Increased support, ease of implementation, funding, opportunities
- Overlap with National EHS goals, local recreational planning

Veldkamp



Source: Waterboard Regge en Dinkel

Other Examples



Tatums

Velderberg

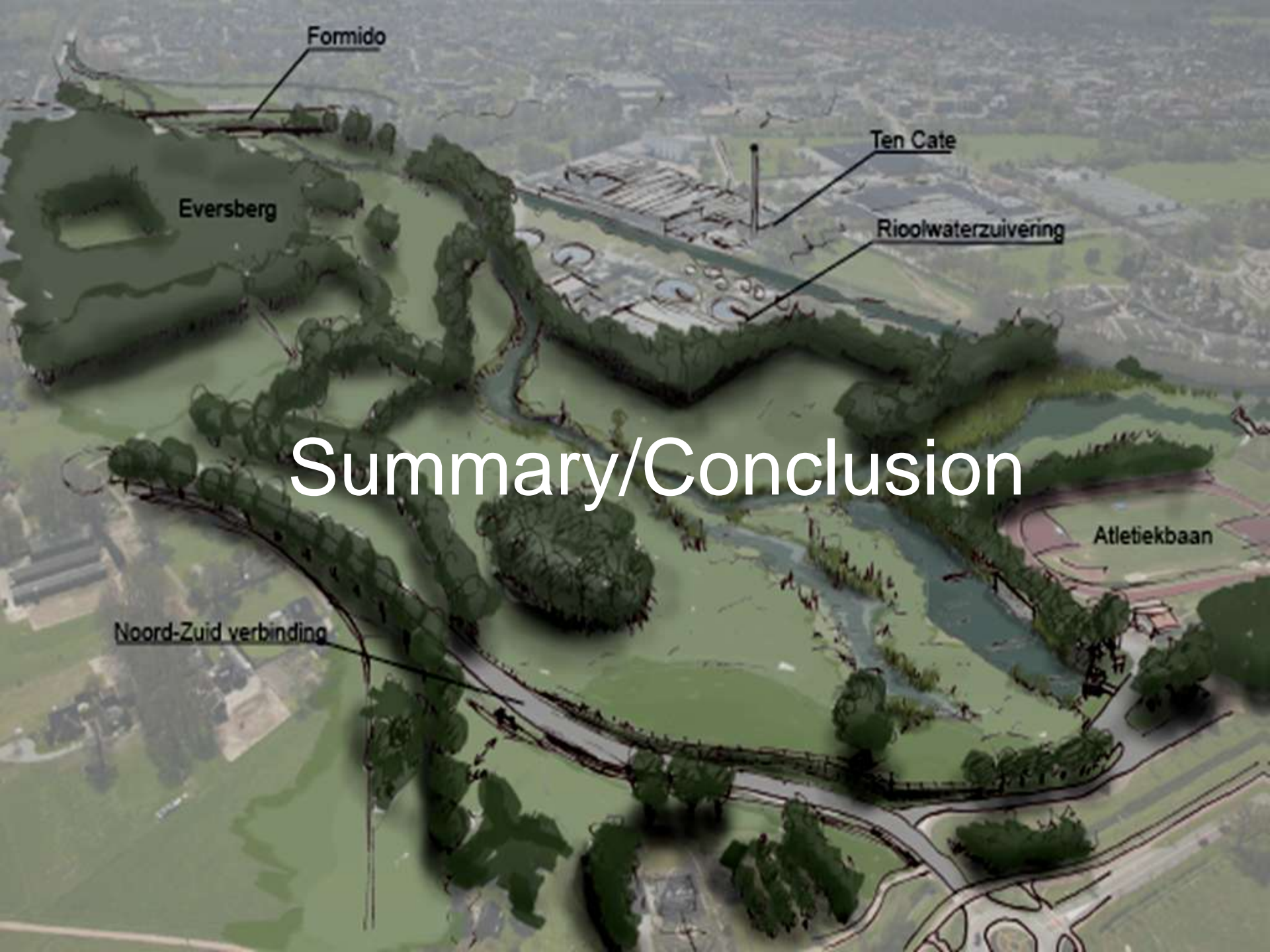


Source: Waterboard Regge en Dinkel

Strategies of Project Leaders

- Receptivity and Flexibility
- Embrace Complexity
- Start Small, Develop Trust & Momentum
- Use Available Instruments
- Patience





Fornido

Eversberg

Ten Cate

Rioolwaterzuivering

Summary/Conclusion

Atletiekbaan

Noord-Zuid verbinding