

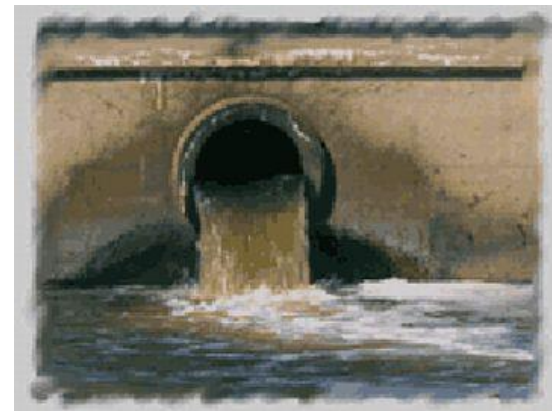


God makes the rain, but we make the runoff

Polluted runoff is the only source of pollution in the Chesapeake Bay Watershed that is still increasing

The Problem:

- When we designed our neighborhoods decades ago, we did not realize that hard surfaces like sidewalks, parking lots, and non-native landscaping would wreak havoc on our vulnerable waterways.
- When rain falls on hard surfaces, it combines with oils, trash, and other contaminants and drains into nearby streams, and ultimately into the Chesapeake Bay.
- Scientists now know that if we redirect the runoff to pervious land, nature can do its job of filtering. God's creation works beautifully if we allow it to do what it's designed to do!
- We all contribute to this problem, so we should all share in the responsibility of fixing it.



The Solution:

In 2012, HB 987 was passed requiring counties to establish funding sources to build projects to reduce polluted runoff.

- Fees are used only in the county or city that collects them; they do not go into a state fund.
- Funds are used to restore or enhance runoff management systems, create buffers to filter runoff, and replace aging infrastructure.
- Similar fees have been implemented in 1,314 communities across 39 states and the District of Columbia, including Norfolk, VA and Philadelphia, PA.

Take action to help heal the bay:

- Visit our website (www.interfaithchesapeake.org/storm_water) to find links to more information on improvement projects that can reduce your contribution of polluted runoff.
- Get a credit on your stormwater fee, depending on your jurisdiction's fee structure.
- Demonstrate to others that your respect for creation is real!

"Prove by your earnestness that your love is genuine."

(2 Corinthians 8:8)



Interfaith
Partners for the
CHESAPEAKE

www.interfaithchesapeake.org