

SUPPORTING PACIFIC COMMUNITIES

National is working hard to support Pacific families and communities to succeed.

New Zealand's Pacific population is growing. By 2026, it is projected that Pacific people will comprise 10 per cent of all New Zealanders, compared to 6.5 per cent in 2001.

Under National, there are more Pacific people in work than a year ago, more students are doing better at school and in tertiary education and more Pacific people are having elective surgery in our hospitals.

Education is the key to unlocking the success of Pacific people. National is focused on more Pacific people attaining higher qualifications so that they can achieve their potential.



POLICY HIGHLIGHTS

- Created 83,000 new jobs across the country in the past year. 18,000 were filled by Pacific people.
- 90 per cent of Pacific children are now starting school having participated in early childhood education – up from 84 per cent in 2008.
- At secondary school level, 71 per cent of Pacific students left school with at least NCEA Level 2 last year – up from 51 per cent in 2008.
- The number of Pacific students gaining tertiary qualifications has increased from 7,400 in 2008 to 12,700 last year.
- Invested \$43 million in the Māori and Pasifika Trades Training Initiative. By 2015 there will be 3,000 fees free places.
- Increased the number of Pacific people having elective surgery from 6,047 in 2008 to 7,463 in 2014, up 23 per cent.

NATIONAL IS...



SUPPORTING YOUNG PACIFIC NEW ZEALANDERS INTO WORK

- ✓ Investing \$43 million in the Maori and Pasifika Trades Training Initiative. By 2015 there will be 3,000 fee free places.
- ✓ Invested \$1.1 million into Pacific Employment Support Services helping young people into jobs and training in Budget 2014.
- ✓ Funding more Youth Guarantee places – 15 per cent are filled by Pacific students.
- ✓ Investing \$148 million in wrap-around support services to support teens who are not in education, employment, or training.
- ✓ Introduced the Starting-out Wage in 2013 to help more young New Zealanders get on the employment ladder.
- ✓ Set up the Apprenticeship Reboot – we are on track to have 14,000 new apprentices starting training over the next five years.



SUPPORTING PACIFIC CULTURE IN NEW ZEALAND

- ✓ Developed a Pacific Languages Framework guideline to focus on community-led initiatives and early childhood education participation.
- ✓ Promoted seven Pacific language weeks. These are Samoan, Cook Island, Tongan, Tuvaluan, Fijian, Niuean and Tokelauan.
- ✓ Partnered with Pasifika Futures to provide Whanau Ora health and social services to Pacific communities.



INVESTING IN NEW ZEALAND'S FUTURE

- ✓ Providing an extra \$155.7 million to help early childhood education remain accessible and affordable, meet demand pressures, and lift participation towards our 98 per cent target. We've nearly doubled funding for early childhood education.
- ✓ Investing \$359 million in new teaching roles to lift student achievement.
- ✓ Maintaining interest-free student loans.
- ✓ Combating rheumatic fever through interventions such as throat swabbing and improving housing.
- ✓ Insulated more than 250,000 Kiwi homes as part of our Warm Up New Zealand: Heat Smart and the Warm Up New Zealand: Healthy Homes programmes.
- ✓ Passed laws to prevent loan sharks from taking advantage of our most vulnerable people, and boosted funding for budgeting services.
- ✓ Connecting 75% of households, businesses, schools and health centres to the Ultra-Fast Broadband network by 2019, with 500,000 able to connect so far.



BUILDING A SAFER NEW ZEALAND

- ✓ Achieved the lowest crime rate in 35 years.
- ✓ Put 600 more Police on the front line around the country, including 300 in Counties Manukau.
- ✓ Introduced 34 Neighbourhood Policing Teams to ensure a dedicated and strong Police presence in some of New Zealand's most vulnerable communities.

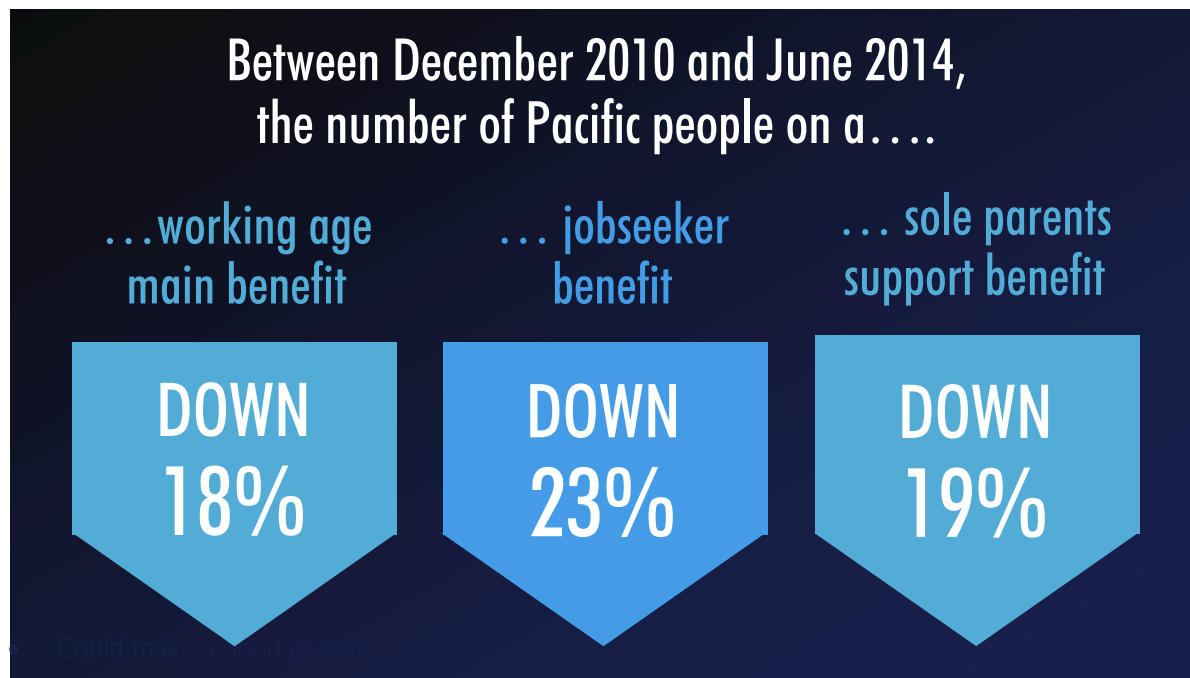
OUR RESULTS SO FAR

MORE JOBS

**18,000
MORE JOBS
FOR PACIFIC
NEW ZEALANDERS
IN THE PAST YEAR**

- The economy is growing at 3.8 per cent – faster than most other developed countries.
- Created 83,000 new jobs across the country in the past year. 18,000 were filled by Pacific people.
- Overseen an increase in the average wage by \$3,000 in the past two years. The average wage is forecast to grow by around another \$7,000 to \$62,300 by 2018.
- Unemployment is coming down. It's currently sitting at 5.6 per cent, and it is predicted to fall to 4.5 per cent by mid-2018.
- Encouraged 15,000 people off the benefit in the past year, including 8,600 sole parents.
- Helped over 400 Pacific young people into employment and placed over 200 into training through the Pacific Employment Support Service.

FEWER BENEFICIARIES

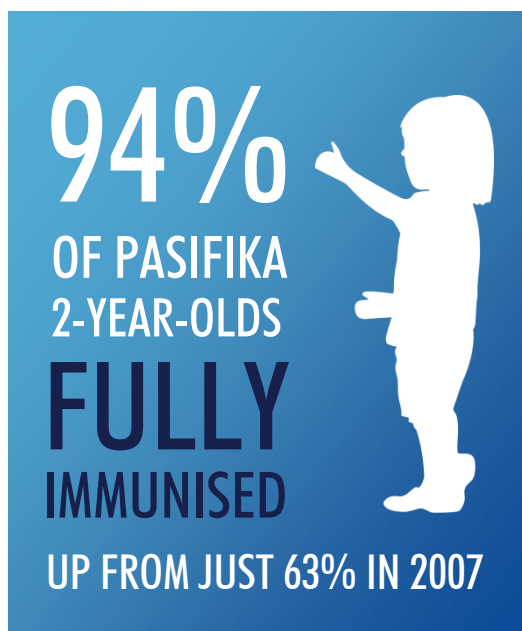


HIGHER ACHIEVEMENT IN EDUCATION



- Increased the number of Pacific children participating in early childhood education, from 84 per cent in 2008 to 90 per cent this year.
- Encouraged more teaching staff who identify as Pacific into early childhood centres. The rate has increased from 1,477 in 2008 to 1,920 in 2013, up 30 per cent.
- Lifted the number of 18 year-old Pacific students to achieve at least NCEA Level 2 from 51 per cent in 2008 to 71 per cent in 2013.
- Increased the number of Pacific students gaining tertiary qualifications from 7,422 in 2008 to 12,740 in 2013, an increase of 72 per cent.
- Supported the number of Pacific students completing bachelor's degrees to increase from 980 in 2008 to 1,530 in 2013, a 56 per cent rise.

HEALTHIER FAMILIES



- Increased the number of Pacific people having elective surgery from 6,047 in 2008 to 7,463 in 2014, a rise of 23 per cent.
- Around 313,000 Pacific New Zealanders - 75 per cent - have access to low cost GP visits.
- Increased the number of people having heart and diabetes checks by 6 per cent - over a million checks were completed in the past five years.
- Lifted immunisation rates, with 94 per cent of Pacific children now immunised by their second birthday, compared to just 63 per cent in 2007.

WHAT WE WILL DO NEXT...

1. GET MORE PEOPLE INTO THEIR FIRST HOME

→ **Provide extra help to tens of thousands more people looking to buy their first home.**

National will introduce KiwiSaver Homestart, which overhauls the KiwiSaver deposit subsidy scheme.

We will increase the deposit grants for those wanting to purchase a newly-built first home, and raise house price threshold across the country. The changes include bigger grants for those wanting to buy a newly-built first home.

People will also be able to withdraw their KiwiSaver member tax credit to put towards their deposit.

The policy changes are predicted to help around 90,000 first home buyers over the next five years, 40,000 more than would be helped under current policy.

2. SUPPORT PACIFIC COMMUNITITES

→ **Fund Polyfest, New Zealand's largest Maori and Pacific Island cultural festival.**

National will invest \$200,000 over three years into the annual event. This funding boost will help organisers mark the event's 40th anniversary in 2015.

→ **Ensure the Ministry of Pacific Island Affairs better connects with Pacific communities.**

The ministry's priority is to achieve better outcomes for Pacific individuals, communities, and businesses. This will be done by focusing on education, employment, leadership and Pacific languages and culture. The aim is to further grow the economic and social contribution of Pacific communities in New Zealand.

To help achieve these goals, the Ministry is increasing its presence in Auckland, home of two-thirds of New Zealand's Pacific population.

3. CONTINUE TO HELP PACIFIC PEOPLE GET AHEAD

→ **Raise participation in ECE**

National will invest a further \$155.7 million over four years in early childhood education to help give all children a great start in life and target areas where participation is low. We will continue to work towards our Better Public Service target of 98 per cent of all children starting school having participated in ECE by 2016.

→ **Lift achievement in schools.**

We will invest \$359 million in new teaching roles to lift student achievement and continue to aim for 85 per cent of all 18-year-olds having achieved NCEA Level 2 or an equivalent qualification by 2017.

→ **Boost tertiary qualifications**

National will also continue to lift the proportion of 25 to 34 year olds with a Level 4 or higher qualification and the number of Pacific students attending university.

We are committed to establishing 3,000 free places in the Maori and Pasifika Trades Training Initiative by 2015.

4. SUPPORT PACIFIC FAMILIES

→ **Provide free GP visits and prescriptions for children under 13.**

From July 2015, National will extend free doctors' visits and prescriptions for children aged under six to all children under 13, helping up to 40,000 more Pacific kids.

National brought in the policy of free GP visits for children under six, including free after-hours visits. Thanks to our prudent management of the health budget, we are extending this policy to all under-13s.

We will continue to combat rheumatic fever through interventions such as throat swabbing and improving housing.

DON'T PUT IT ALL AT RISK

Labour and the Greens would:

- ✘ Drive New Zealand's economy downwards through low growth and anti-job policies.
- ✘ Roll back the welfare reforms, which have seen 15,000 people come off the benefit in the last year
- ✘ Waste public money on backroom bureaucracy.
- ✘ Throw money at young parents without providing the wrap-around support they need.
- ✘ See our Police tied up in paperwork and bureaucracy and not out on the streets preventing crime.