

Key Findings from the Latest Census Data

Tazra Mitchell, Policy Analyst

October 10, 2013

NC's Economy is Stuck:

Job shortage & growth in low-wage jobs

The Impacts:

Persistently high poverty rates & Stagnant Wages

Addressing Poverty:

How you can share this story, get engaged



OVERVIEW OF WEBINAR

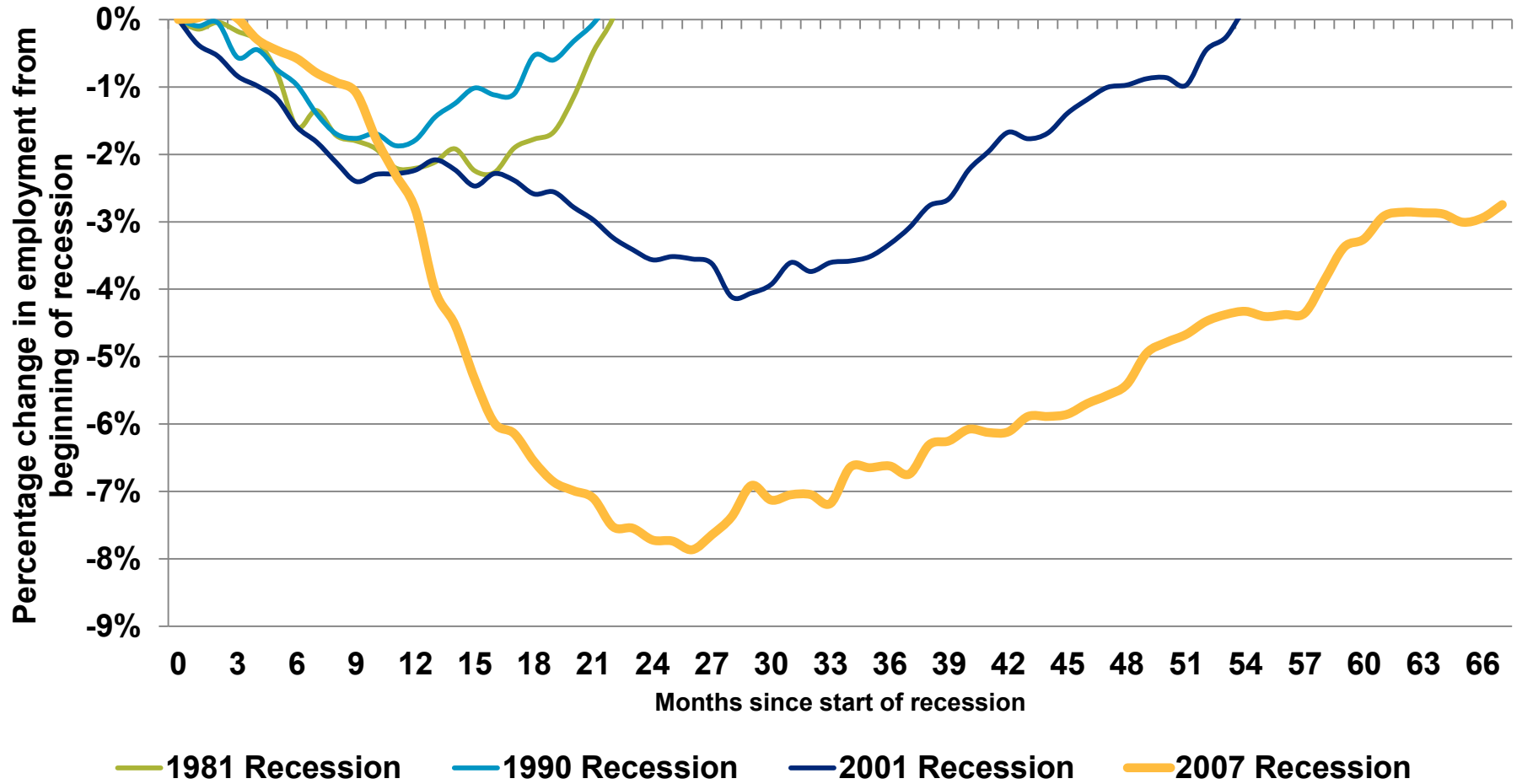
NC's Economy is Stuck:
Job shortage & growth in low-wage jobs

The Impacts:
Persistently high poverty rates & Stagnant Wages

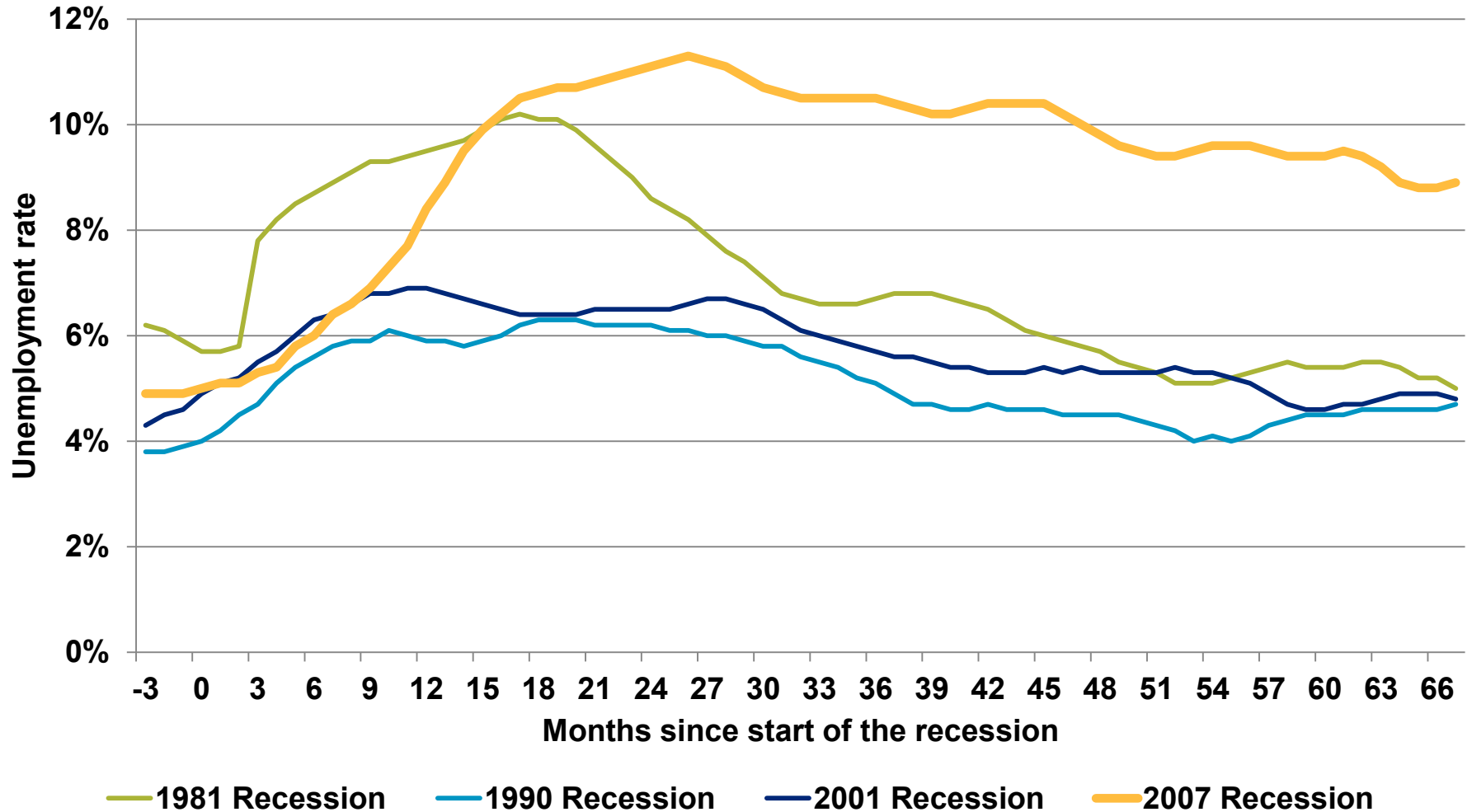
Addressing Poverty:
How you can share this story, get engaged



Employment Levels Fell Further, Have Farther to Climb out Than Past Recoveries

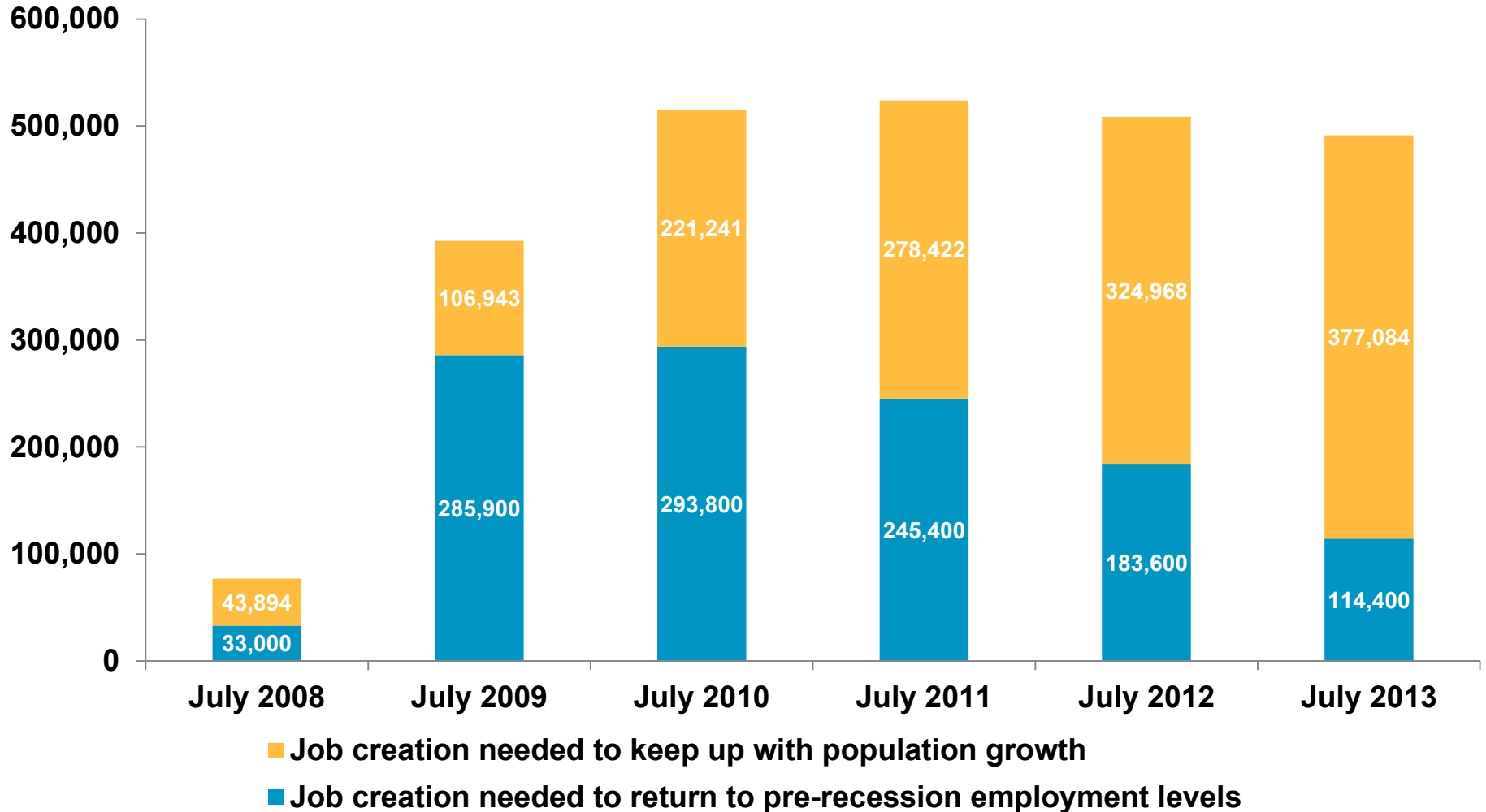


NC is Experiencing Historically High Unemployment



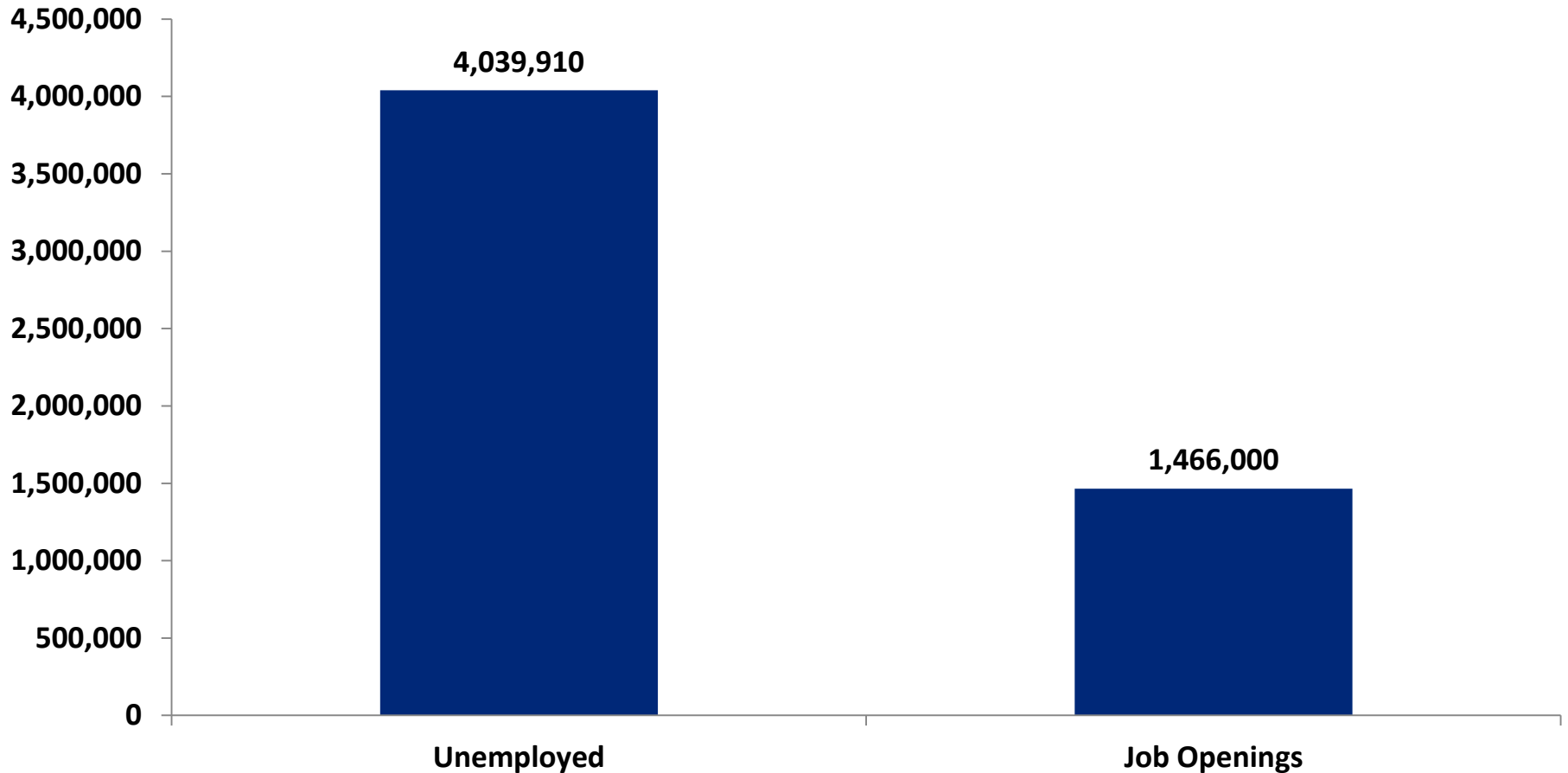
NC's Job Shortage Remains Persistently High

Total Job Shortage

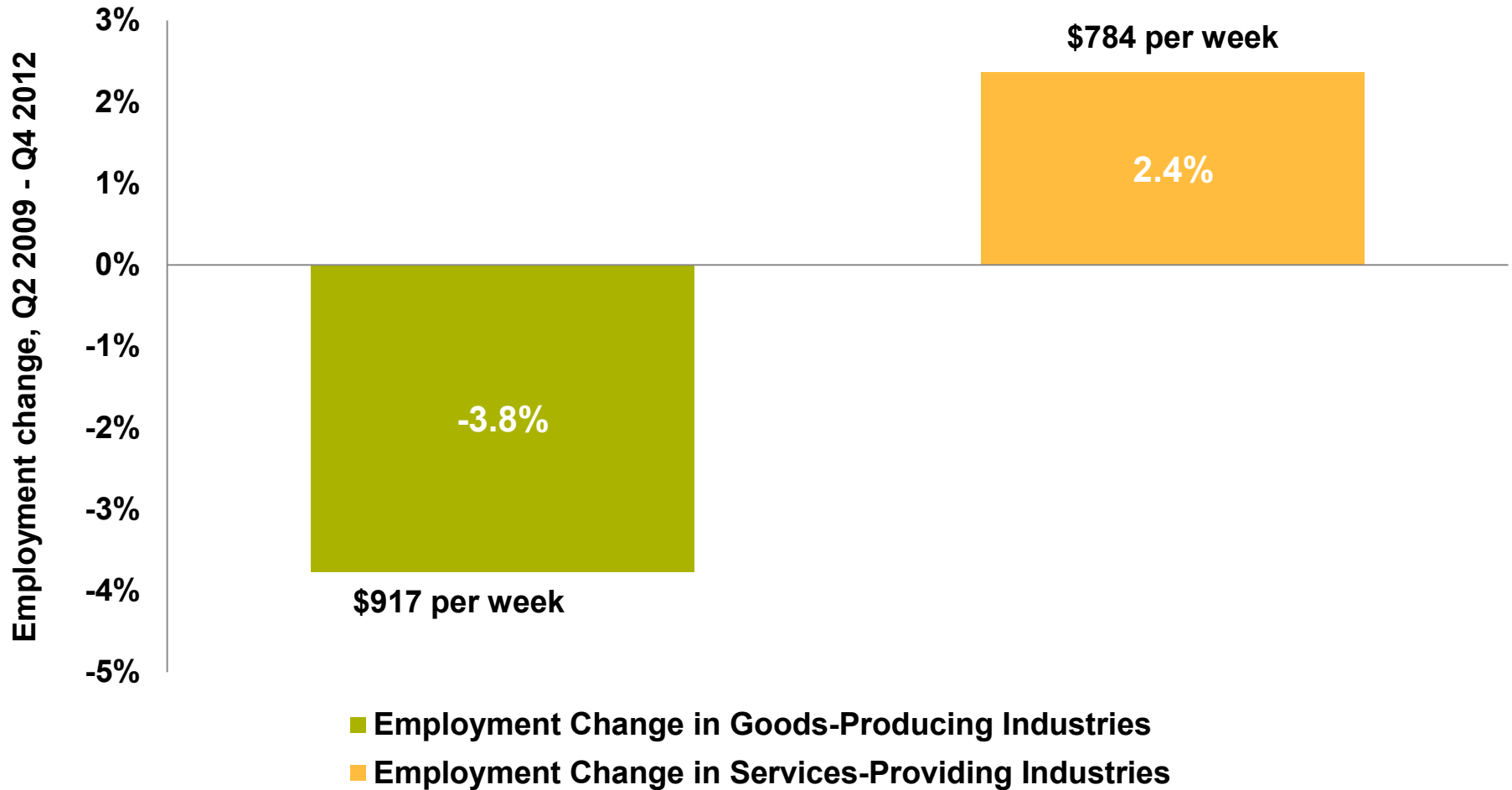


Unemployed Workers Outnumber Job Openings by Almost 3-to-1

Number of Unemployed Workers versus Job Openings



Low-Wage Jobs are Replacing High-Wage Jobs





NC's Economy is Stuck:
Job shortage & growth in low-wage jobs

The Impacts:
Persistently high poverty rates & Stagnant Wages

Promoting a Better Approach:
How you can share this story, get engaged



Poverty Rates Hold Steady, Remain Resistant to Recovery

- **Poverty was stuck at 18%.** Remained well-above pre-recession levels.
- **Poverty continues to hit certain groups harder.** Children, communities of color, and rural counties are the hardest hit.
- **Economic growth is not delivering income growth.** Household income remained flat even though the economy grew by 1.7 percent.
- **Income inequality remains widespread.** Top 5th of households hold more than half of all income.
- **Economic hardship would be far greater without the safety net.** SNAP, Social Security, EITC, and Unemployment Insurance lifted millions out of poverty.



Millions are Still Reeling from the
Effects of the Great Recession

1.7 million+ in Poverty

\$23,492

(poverty level for family of four)

10th highest

- Highest Poverty Rate
- Highest Child Poverty Rate

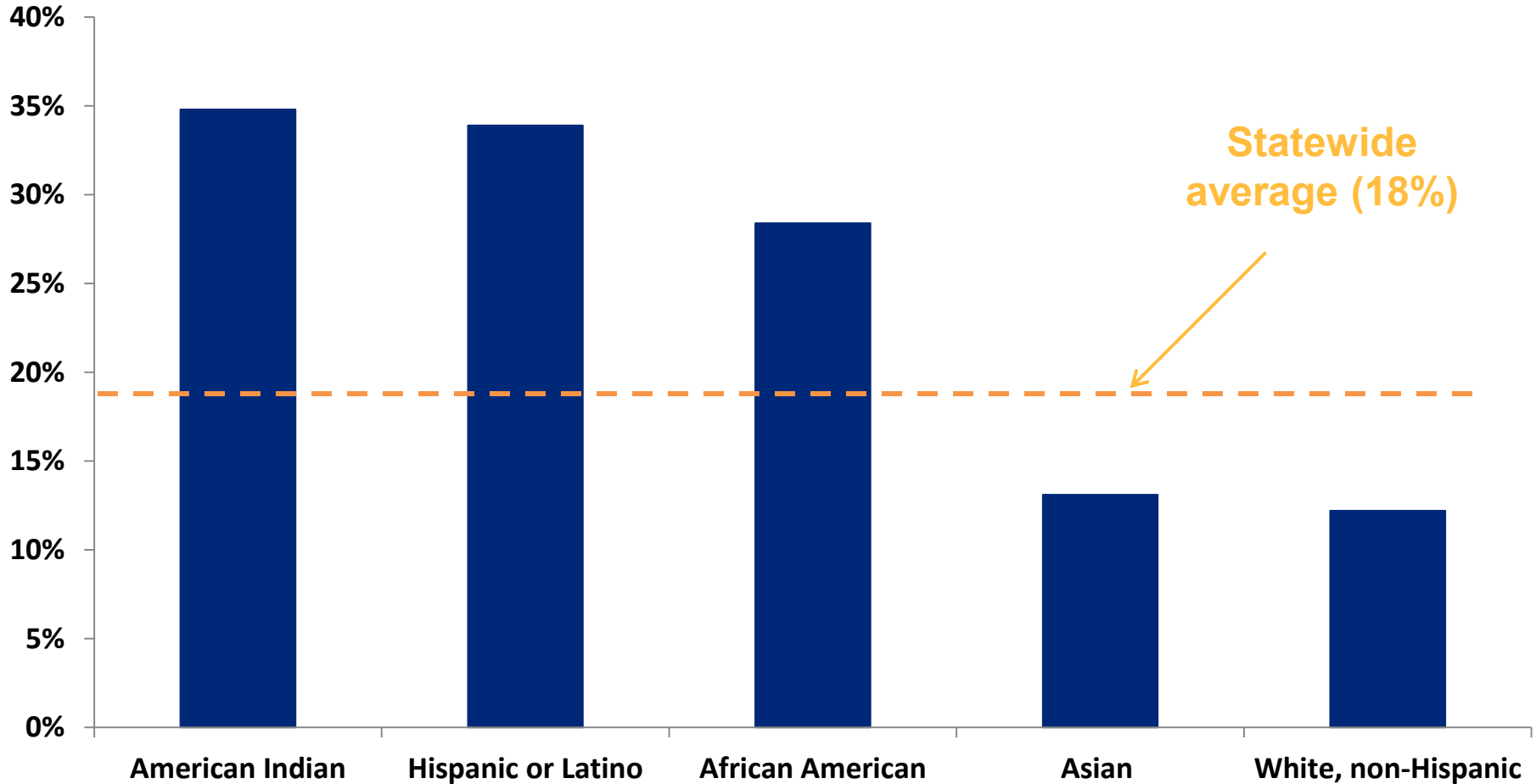
12th highest

- Deep Poverty Rate (half of poverty level)



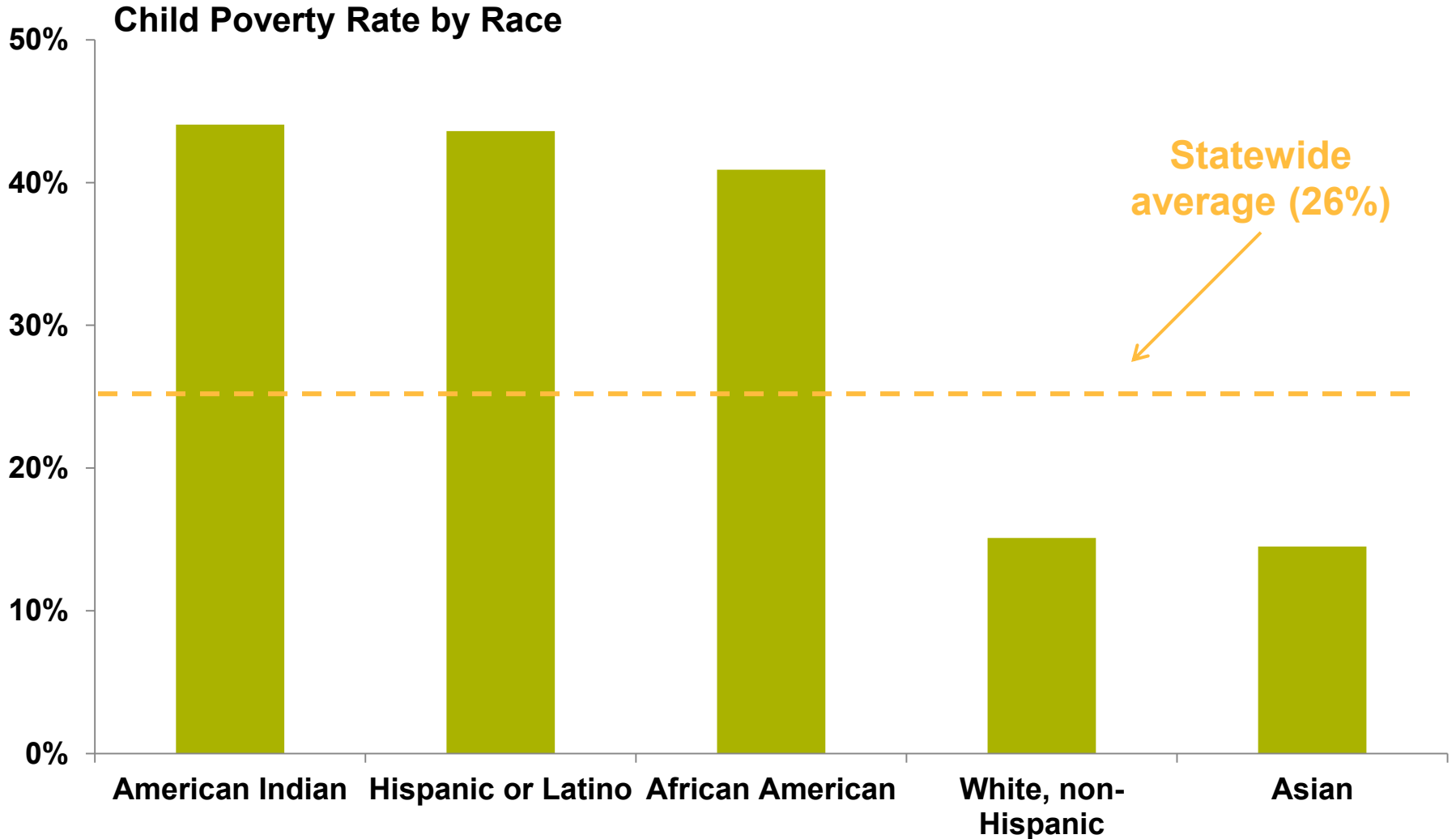
Communities of Color Face Highest Poverty Rates

Poverty Rate by Race

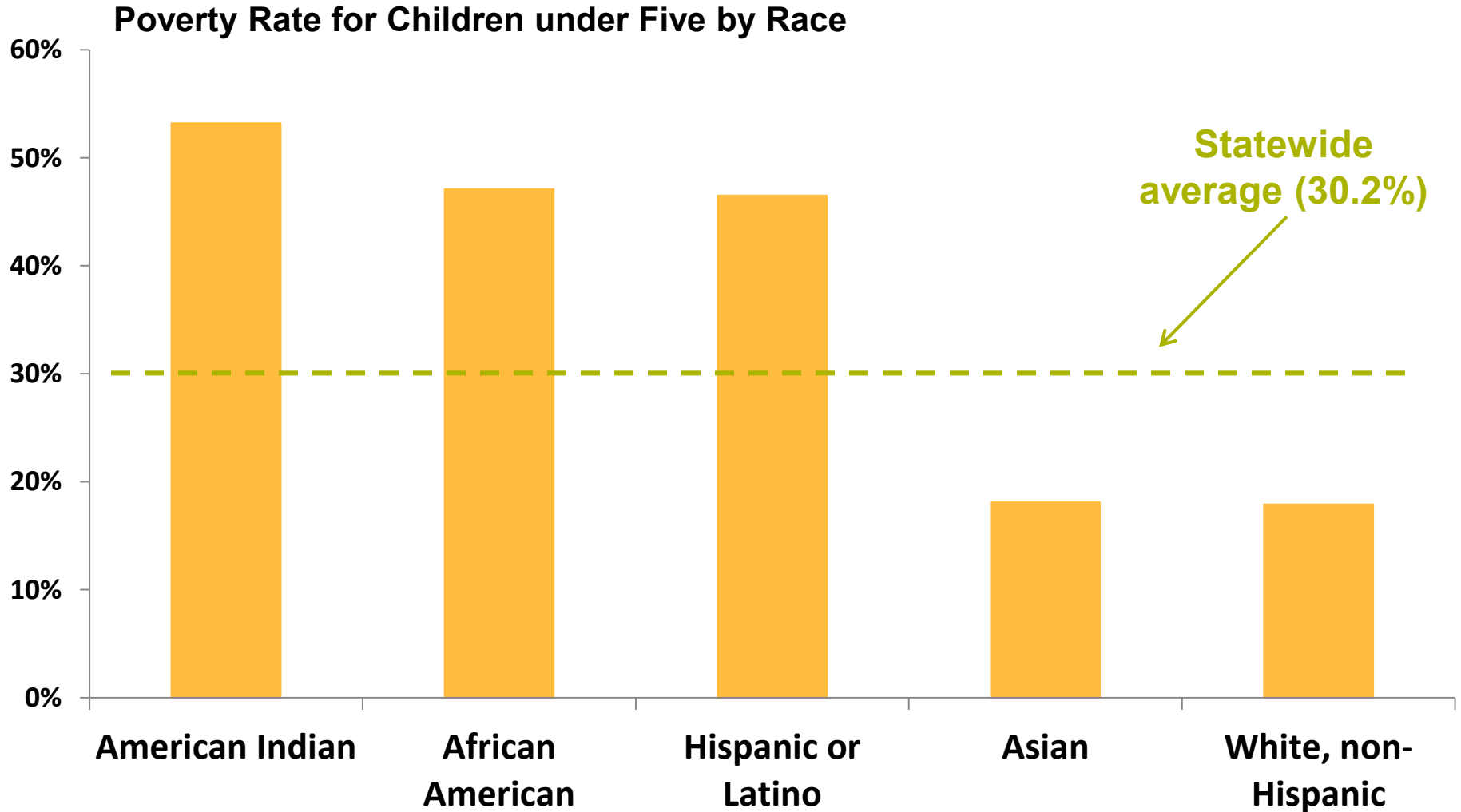




Poverty Rates for Children of Color are Approaching 50 Percent



Poverty Maintains Even Fiercer Grip on Children Under 5



The Disproportionate Impact of Poverty

Highest Poverty Rate

**An American Indian boy
under 5 years old
(57.4% poverty rate)**

Lowest Poverty Rate

**A non-Hispanic white man
between 65-74 years old
(4.8% poverty rate)**

Poverty Varies Dramatically by Family Type

**Single Moms
with children**

45.6%

**Single Dads
with children**

29.8%

**Married Couples
with children**

9.8%



Poverty Varies Across Demographics

Female

19.5%

Male

16.5%

Seniors

10%

**With a
Disability**

24.9%

Top 5 Poorest Counties

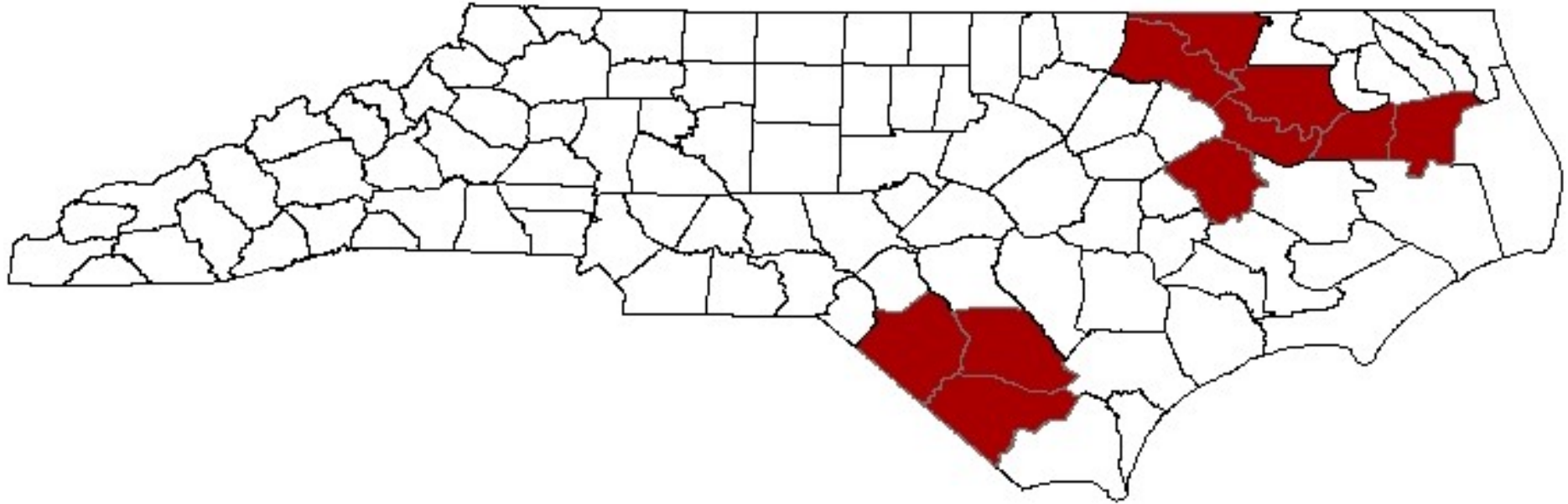
Robeson 34.5%
Wayne 24.9%
Wilson 24.4%
Pitt 24.1%
Cleveland 23.5%

Top 5 Least Poor Counties

Wake 11.6%
Union 11.8%
Onslow 12.2%
Chatham 13.1%
Cabarrus 13.5%

- 17 counties had higher poverty rates than NC average
- 7 of 10 highest poverty rates were in rural counties
- Forsyth had highest poverty rate among urban counties

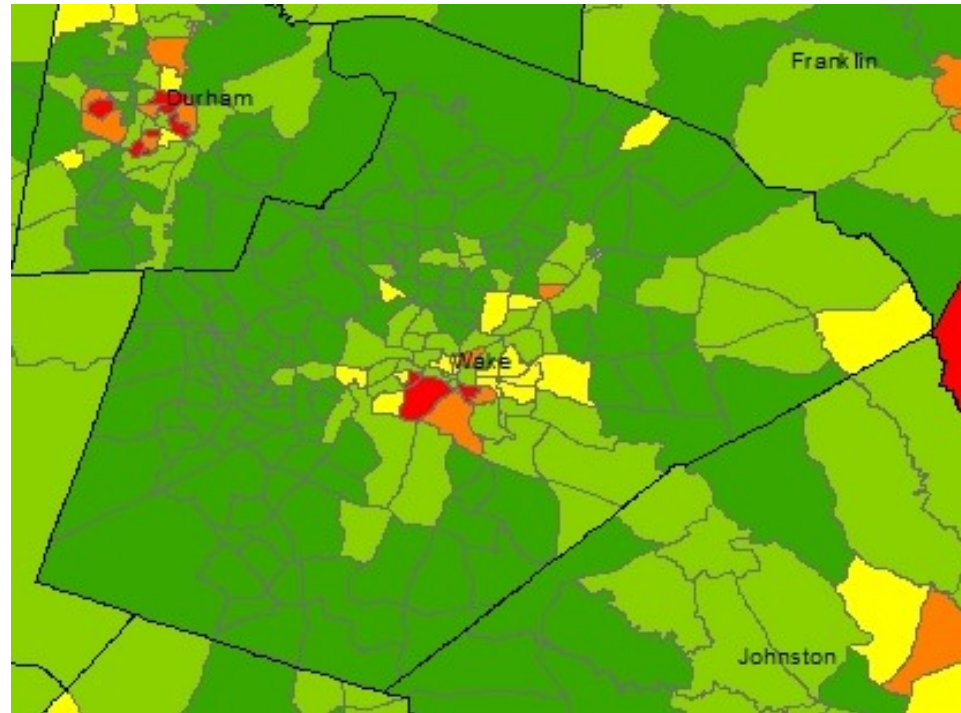
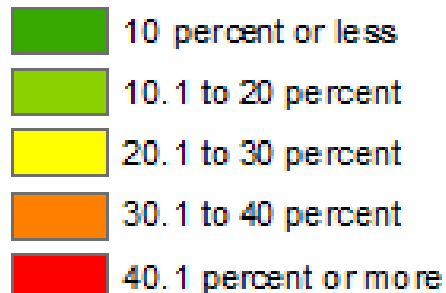
Persistent Poverty Concentrated in the East



Even in Urban Counties, Concentrated-Poverty Neighborhoods

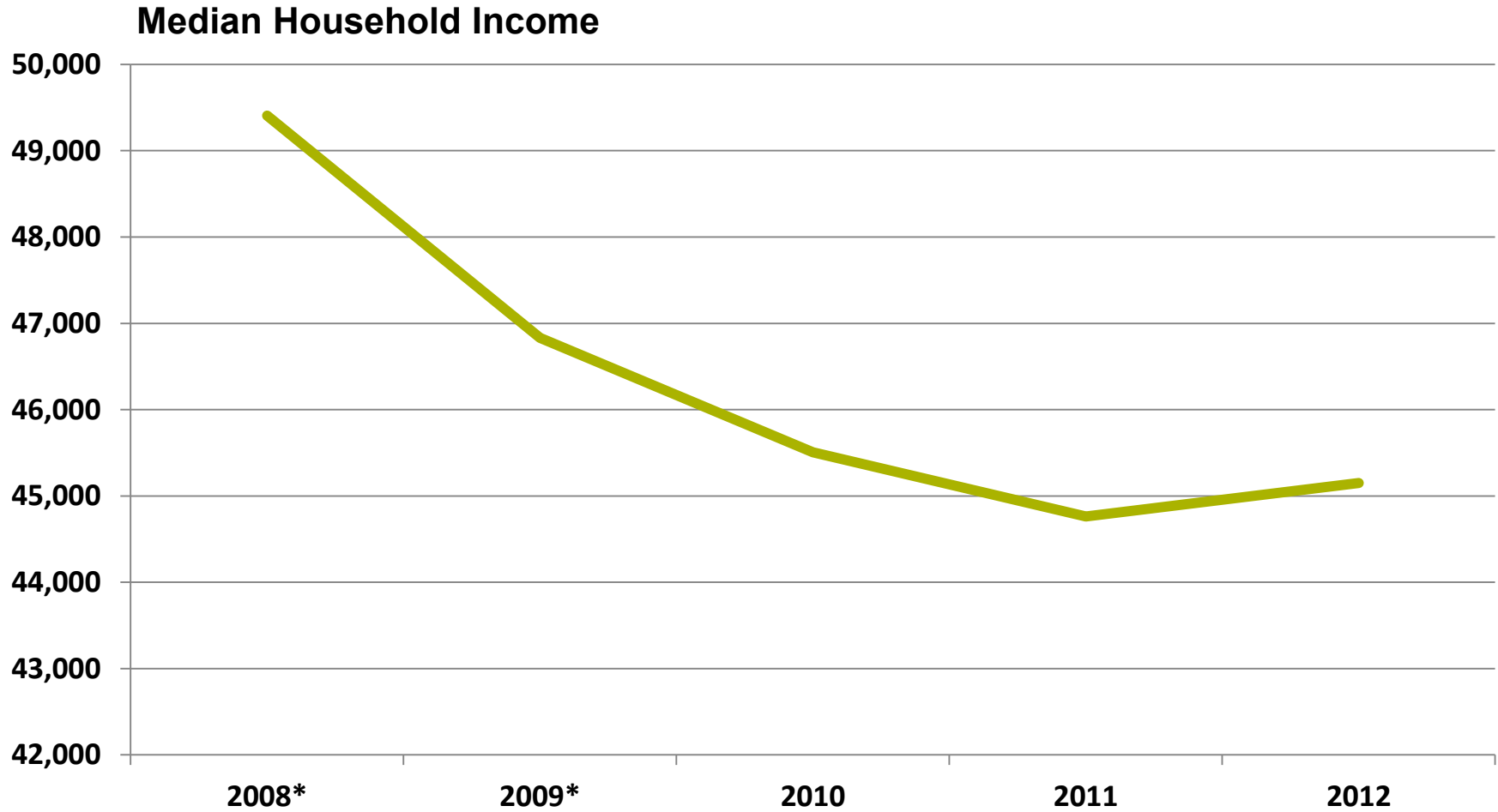
Legend

Total People in Poverty





Median Household Income Down \$4,256 Since 2008



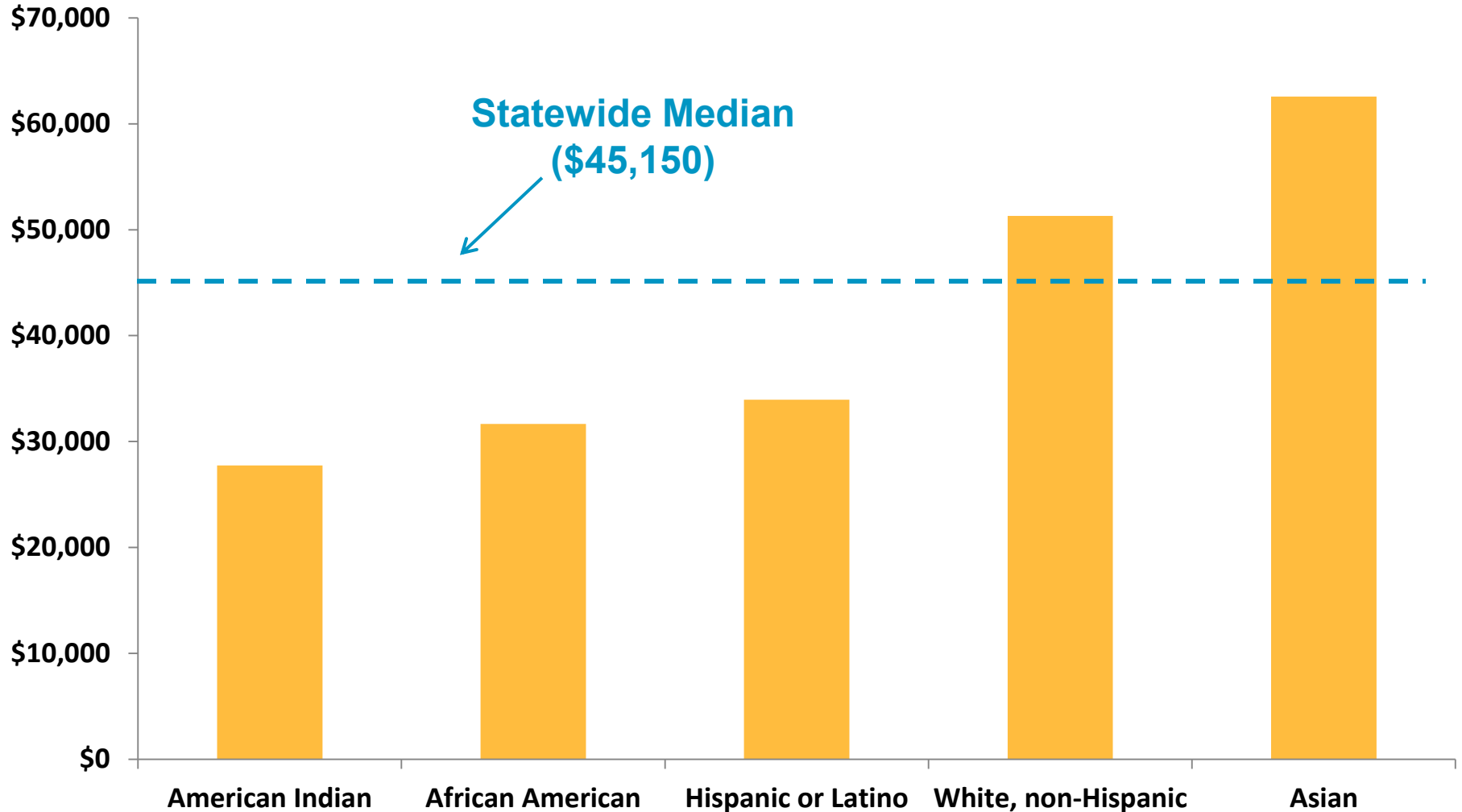
*2012 value is statistically different from 2008 and 2009 but statistically unchanged from 2010 and 2011.

Source: 2012 American Community Survey.

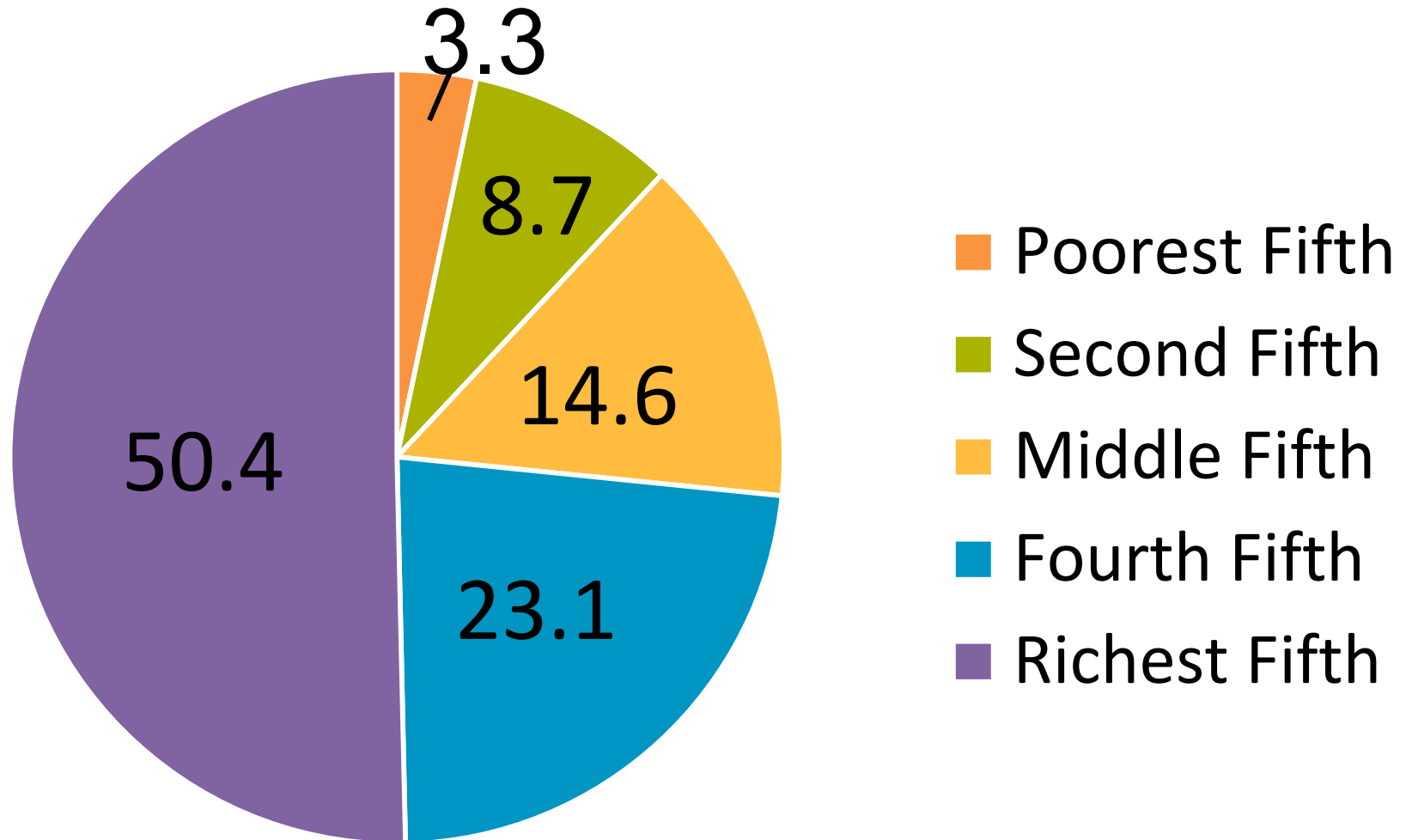


Income Disparities by Race Persist

Median Household Income



The Top 20 Percent Holds More than Half of All Household Income

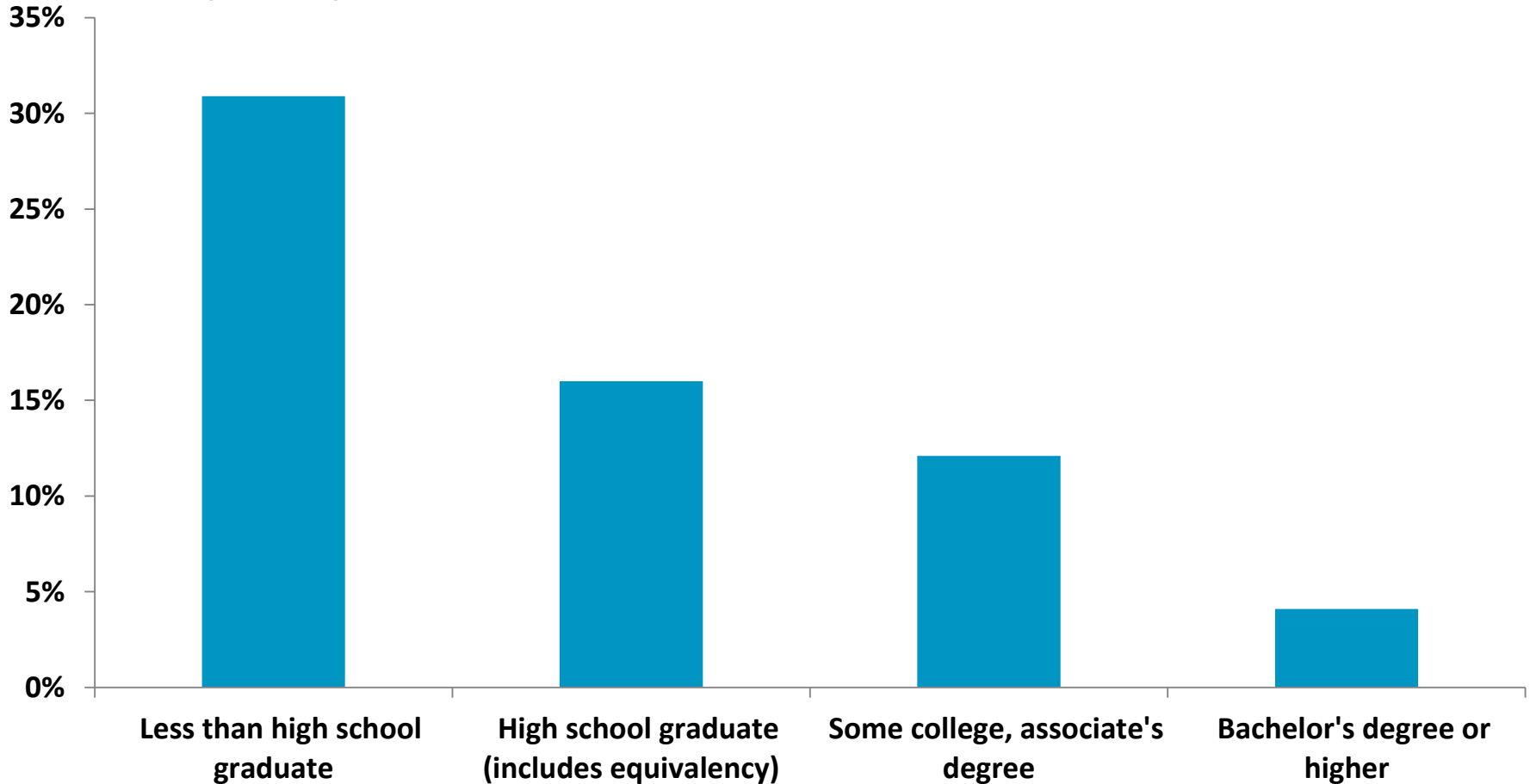




BTC

Impact on Life Chances: Education Helps Break Cycle of Poverty

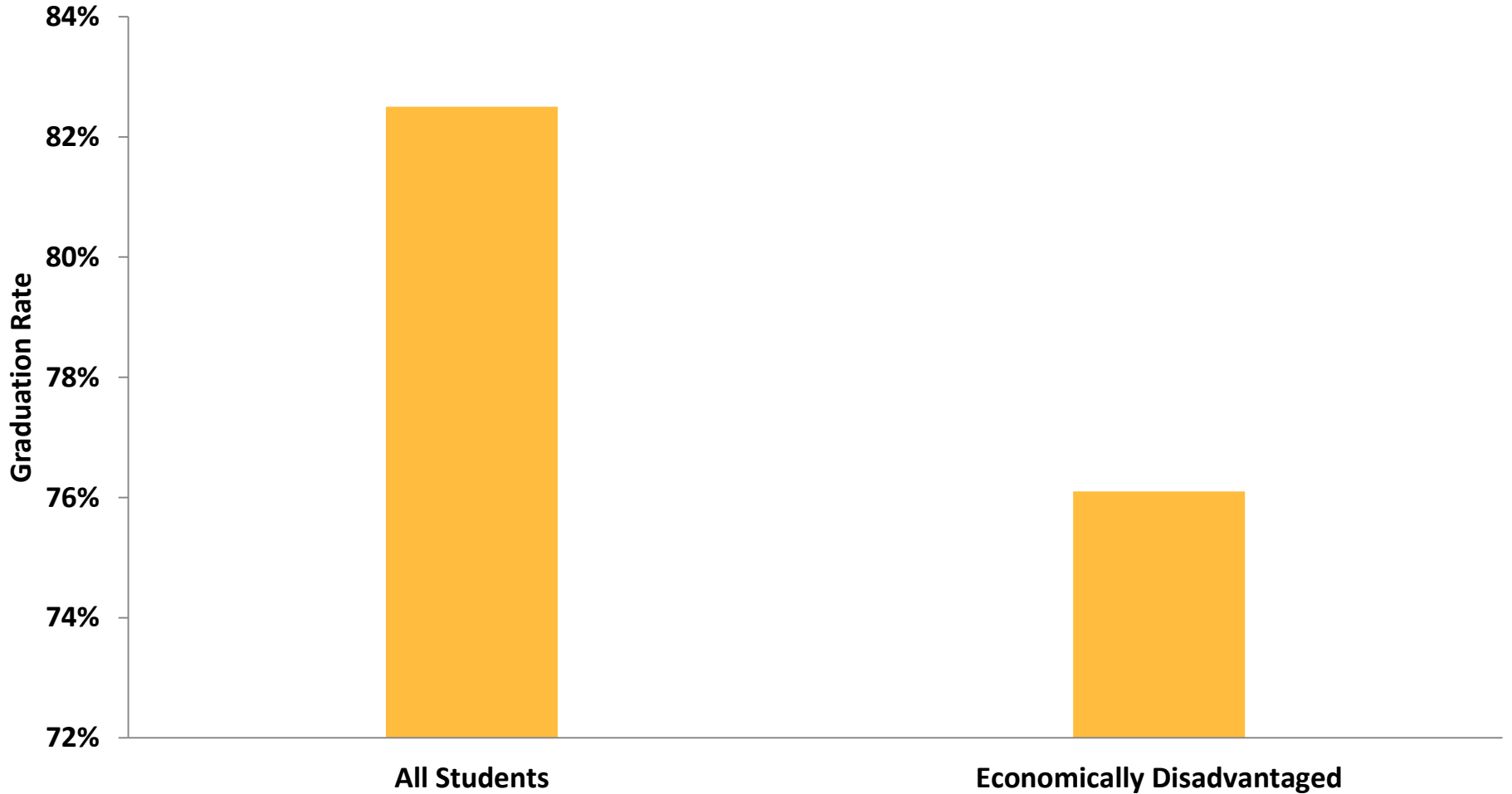
Poverty Rate by Educational Attainment



Source: 2012 American Community Survey.



BUT...Parents' Financial Standing Impacts Education Outcomes



Safety-Net Programs Kept Poverty in Check in 2012

4 Million

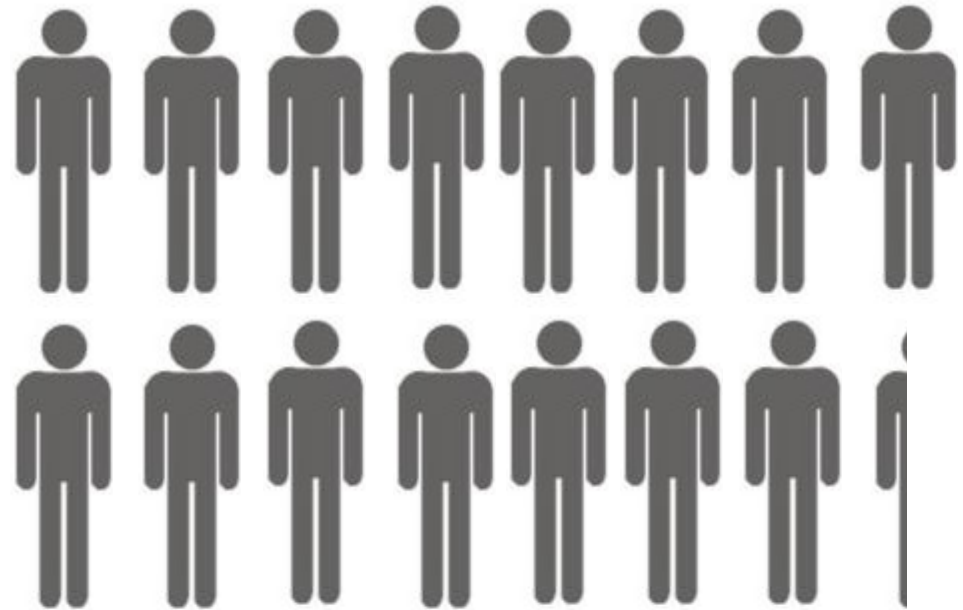
people were lifted out of poverty by SNAP



 = 1 million people

15.3 Million

older adults were lifted out of poverty by Social Security



1. The jobless recovery and acceleration of low-wage work are driving harmful trends in poverty and income
2. Poverty is stuck high, well-above pre-recession levels
3. The safety net is working overtime to offset elevated rates of hardship
4. Crisis levels of poverty among children of color have long-term implications for NC's economic future



NC's Economy is Stuck:
Job shortage & growth in low-wage jobs

The Impacts:
Persistently high poverty rates & Stagnant Wages

Addressing Poverty:
How you can share this story, get engaged

- Reversing these trends requires adequate and long-term investments in:
 - Education
 - Job creation
 - Policies that ensure jobs pay living wages
 - Policies that build an “all in” or inclusive economy
- Meanwhile, we must be careful not to dismantle the safety net and work supports that help families make ends meet



PROMOTING A BETTER APPROACH: Toolkits for You to Get Engaged

Inform your Networks

- Use Fact Sheets and Conversation Starters
- Share Social Media Content

Connect State Decisions to Local Impacts

- Write a Letter to the Editor
- Meet with your elected officials

Stay Up-to-date

- Participate in briefings and community conversations about tax, budget and economy topics
- Sign up for our materials at www.ncjustice.org



Sign our #TalkPoverty Pledge
and Engage your Neighbors

18%
of North
Carolinians live in
poverty



WHY DON'T WE #TalkPoverty IN NC?



CONCLUSION OF WEBINAR

NC's Economy is Stuck:

Job shortage & growth in low-wage jobs

The Impacts:

Persistently high poverty rates & Stagnant Wages

Addressing:

Share this story with your family, friends, community members

Use us as a resource!



Email me at:

tazra@ncjustice.org

Follow us on Twitter at:

[@ncbudgetandtax](https://twitter.com/ncbudgetandtax)

www.ncjustice.org