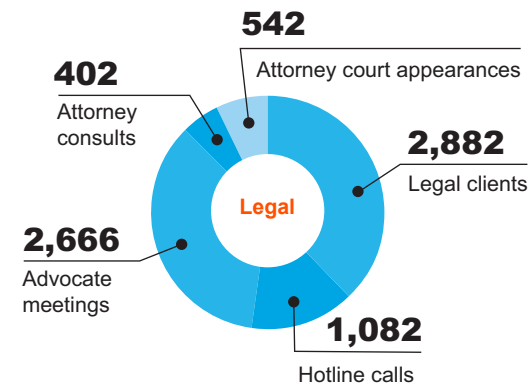
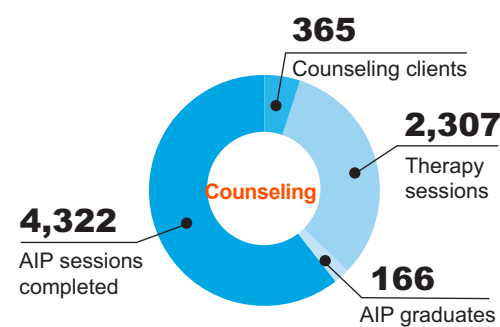
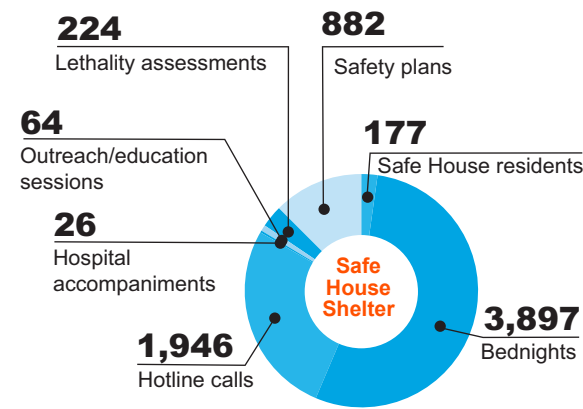


SERVICES BY PROGRAM



VOLUNTEER & IN KIND

110 Volunteers

5,180 Hours of service

\$27,072 Donated gift cards, food and supplies

\$122,766 Total value of volunteer service

REVENUE
\$3,083,296

64% Grants and Contracts

14% Contributions
9% Fundraising & Events
6% Rental Income
5% Program Revenue
2% Donated Goods

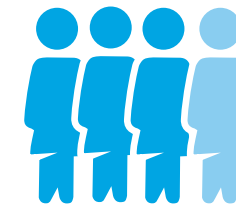
EXPENSES
\$2,562,518

28% Counseling

25% Safe House

15% Legal
10% Fundraising
8% Sexual Assault Response
6% Abuser Intervention
6% Management & General
1% Education Center

STATISTICS



1 in 4 women will be a victim of domestic violence.



Up to **60%** of those who abuse an intimate partner also abuse a child in the home.



21% of women who are abused are pregnant at the time of the assault.

“ I can't believe the difference the YWCA has made in my life. I didn't even know such a thing existed until the time came that I needed it. The police came to my home and immediately connected me with an Advocate at the YWCA. I met her when I went to the safe house. The safe house provided so much more than a bed to me and my boys. It was really nice and it was the first time in four years that I felt like I had a real home to go to. My case manager helped me with learning how to budget and practiced interviews with me. She introduced me to my counselor who saved my life. I am now ready to move to my own place; me and my two boys are excited and we are now safe.”



FRESH STARTS CAMPAIGN

The YWCA completed the Fresh Starts Capital Campaign in April 2019, raising over \$7.65M. The funds were utilized to complete the design, construction and equipping of a new 10,000sf safe house for domestic violence survivors. The home is able to accommodate 32 adults and children at a time and is also the location of the organization's 24-hour hotline operations. Additionally, the YWCA completed a comprehensive renovation to a smaller home on the same property to establish the 2300sf Education & Wellness Center. This property facilitates the 6-week education program as well as treatment rooms for holistic healing following trauma.



YWCA IS ON A MISSION

KEY PARTNERS

The YWCA has relied on the support of numerous community partners and individual donors/supporters. Special thanks goes to: Administrative Office of the Courts, Allegis Group, Anne Arundel County Department of Health, Bunting Family Foundation, CareFirst, Carol M. Jacobsohn Foundation, County Executive's Office, Deerbrook Charitable Trust, Governor's Office of Crime Control & Prevention, Harry and Jeanette Weinberg Foundation, James M. and Margaret V. Stine Foundation, John Vos Family Foundation, Local Development Council, M&T Bank, Severn Bank, Sturbridge Homes, United Way, US Department of Justice, William and Dorothy O'Neill Foundation and YWCA Board of Directors.