

# CA Statewide Redistricting Maps

Presented by Alliance San Diego, Pillars of the Community, PANA, and BAPAC, San Diego through the Black Census and Redistricting Hub.



Partnership for the  
Advancement of  
New Americans



alliance  
SAN DIEGO

# Organizations

---



**Partnership for the  
Advancement of  
New Americans**



**BLACK CENSUS  
AND REDISTRICTING HUB**

# CA State Redistricting

---



Partnership for the  
Advancement of  
New Americans



alliance  
SAN DIEGO

A process used by statewide and local governments to redraw political district boundaries.

A process conducted every 10 years, following the National Census.

# Redistricting Terms

---

**CCRC (CA Citizens Redistricting Commission)** - An independent commission that consist of 14 citizens selected by the CA State Auditor to draw new political district lines.

**COI (Communities of Interest)** - A group of folks that share similar living conditions, struggles, values, background, identities, and needs, that would benefit from being kept together in a single districts.

**Visualization** - Statewide districts drafted by a demographer following the direction of the CCRC commissioners. Should by informed by public input/submissions.

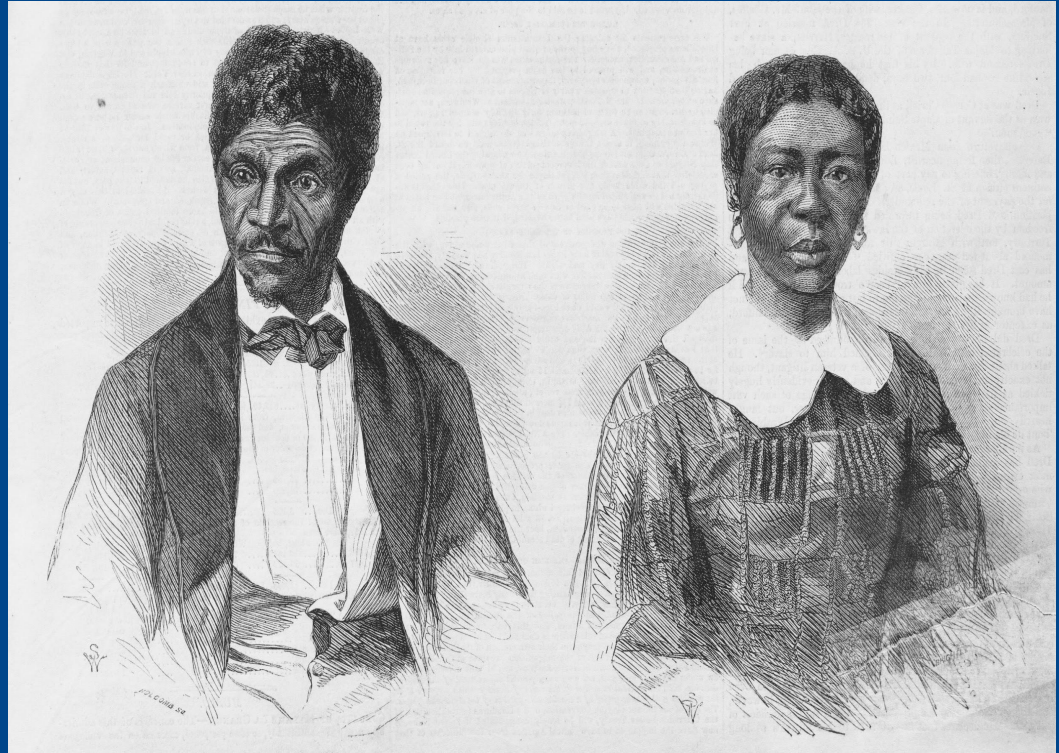
**CVAP** - Citizens Voting Age Population

**Gerrymandering** - establishment of unfair political advantage for a particular party or group by manipulating the boundaries of political districts.

# Historical Context

---

**The Three-Fifths Clause  
was established during  
the Constitutional  
Convention of 1787.**



# Historical Context

---

Civil Rights and  
voter suppression.





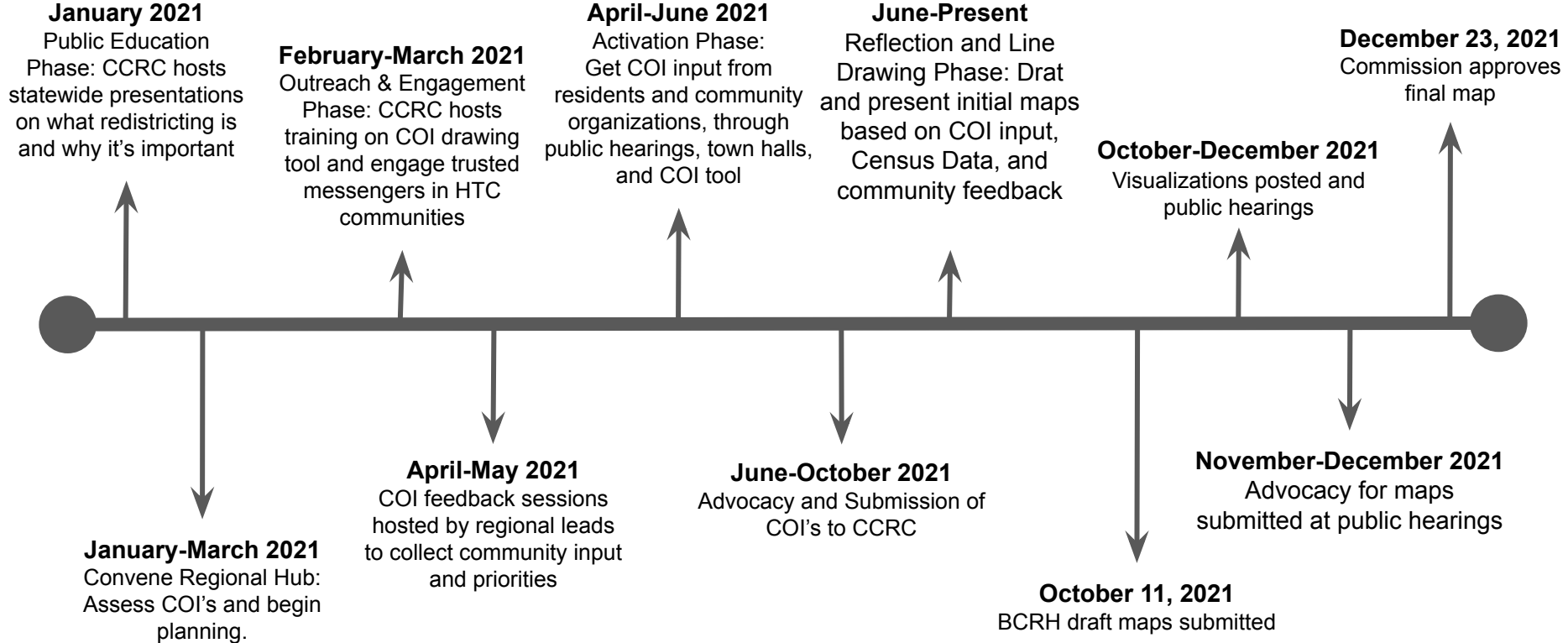
# Historical Context

---

**Redistricting affects  
who you can vote for  
and who represents  
you.**



## CA Citizens Redistricting Commission timeline



## Black Census and Redistricting Hub timeline



# San Diego Regional Goals

---

In collaboration with Alliance San Diego, PANA, Pillars, Bapac, SD

- **COIs identified: City Heights, El Cajon, Southeast, Lemon Grove, La Mesa, Spring Valley**
- Keep Southeast and City Heights whole and together.
- Keep Lemon Grove, Spring Valley, La Mesa & El Cajon COI's with City Heights/Southeast or other similar communities.
- Keep COI's out of districts with coastal, downtown or east San Diego county communities.
- Comply with the Voting Rights Act, by drawing majority Latinx CVAP districts where possible, while also protecting key COI's.

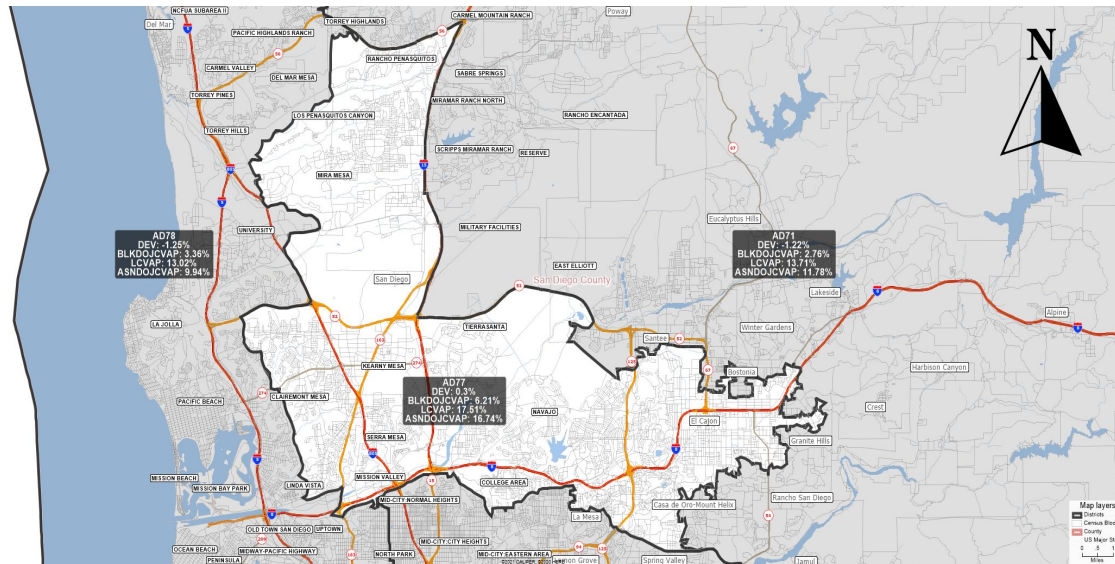
# Assembly Map: Comparable to AD 77



Partnership for the  
Advancement of  
New Americans



alliance  
SAN DIEGO



Communities included:

**El Cajon, La Mesa, College Area, Tierra Santa, Mission Valley East, Serra Mesa, Kearney Mesa, East Clairemont, Convoy, Mira Mesa, Los Penasquitos, Rancho Penasquitos.**

CVAPs:

- Black CVAP: 6.21%
- Latinx CVAP: 17.51%
- API CVAP: 16.74%

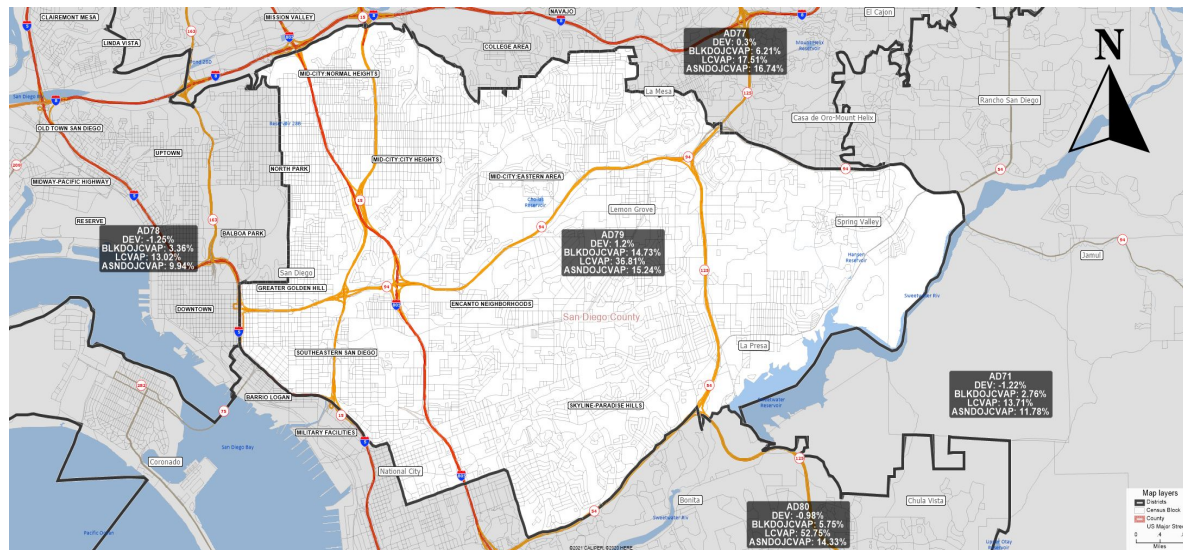
# Assembly Map: Comparable to AD 79



Partnership for the  
Advancement of  
New Americans



alliance  
SAN DIEGO



Communities Included:  
**Spring Valley, La Presa, Southeast, Logan Heights, National City (spilt), Lemon Grove, La Mesa, City Heights, Golden Hill, North Park**

CVAPs:  
Black CVAP: 14.73%  
Latinx CVAP: 36.81%  
API CVAP: 15.24%

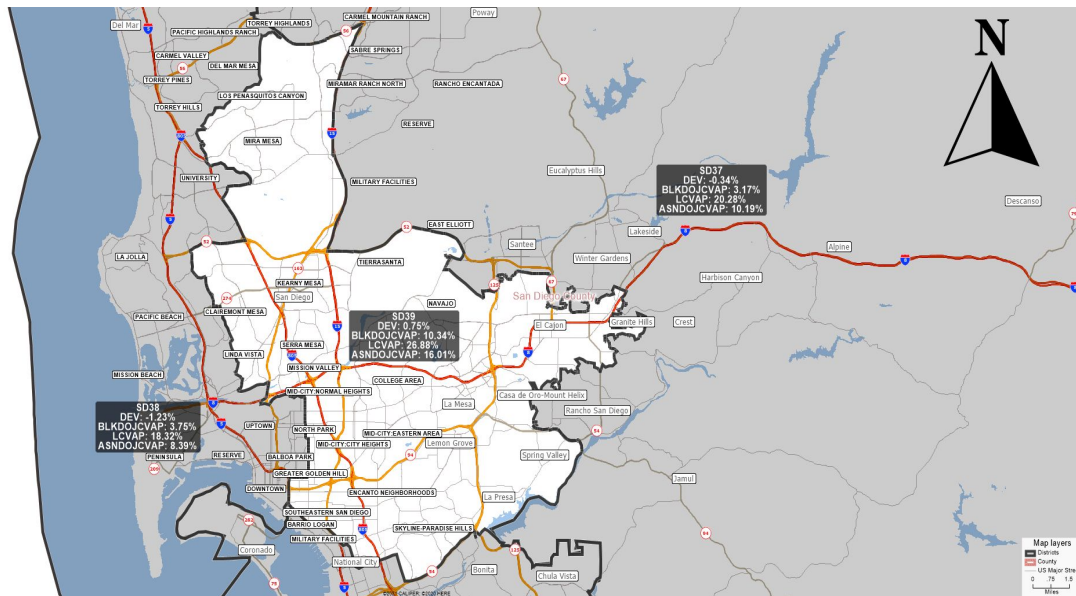
# State Senate Map: Comparable to SD 39



Partnership for the  
Advancement of  
New Americans



alliance  
SAN DIEGO



Communities Included:  
**Spring Valley, La Presa, Southeast, Logan Heights, National City (spilt), Lemon Grove, La Mesa, City Heights, North Park, El Cajon, La Mesa, Tierra Santa, Mission Valley East, Serra Mesa, Kearney Mesa, East Clairemont, Convoy, Mira Mesa, Los Penasquitos, Rancho Penasquitos.**

## CVAPs

Black CVAP: 10.34%  
Latinx CVAP: 26.88%  
API CVAP: 16.01%

# State Senate Map: Comparable to SD 40



Partnership for the  
Advancement of  
New Americans



alliance  
SAN DIEGO

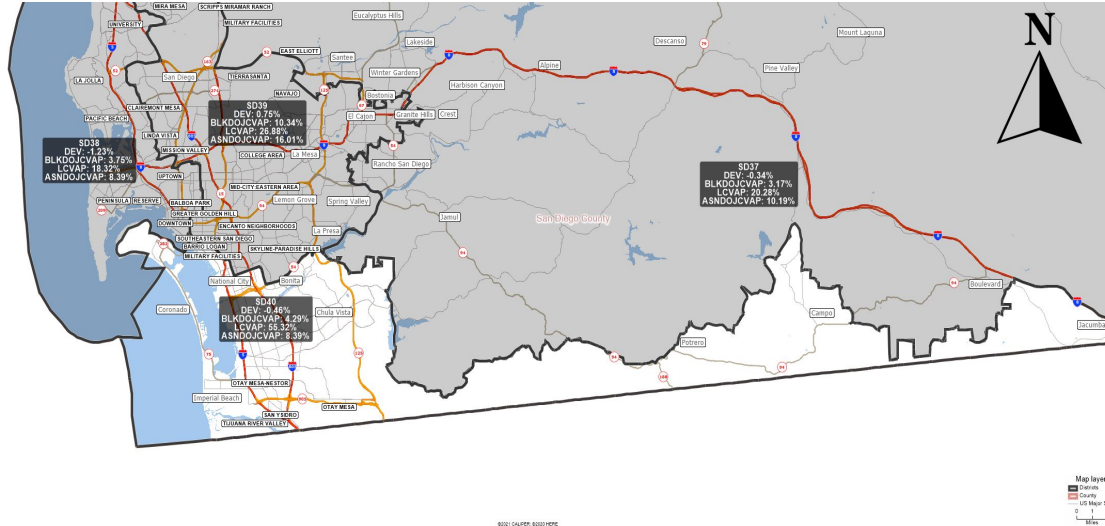
Communities Included:  
Chula Vista, Bonita, National  
City, Bonita, Coronado, Otay  
Mesa, Imperial Beach, San  
Ysidro, Complete Southern  
Border.

## CVAPs

Black CVAP: 4.29%

Latinx CVAP: 55.32%

API CVAP: 8.39%



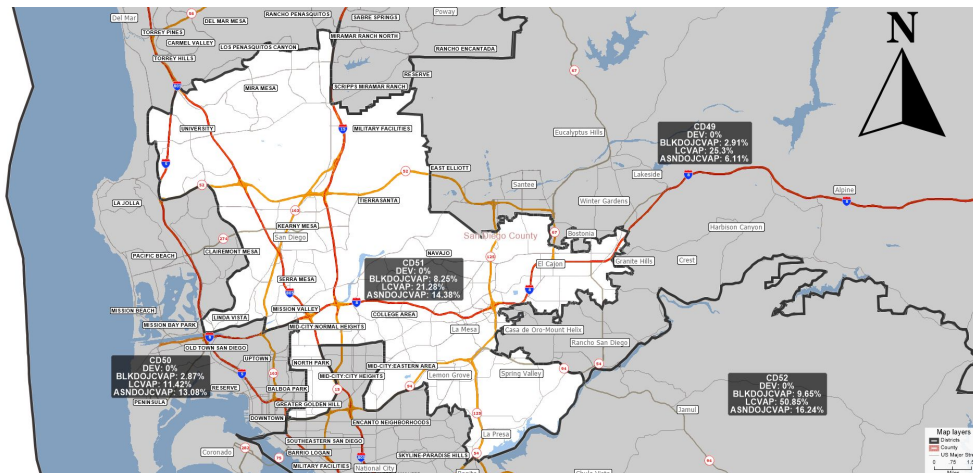
# Congressional Map: Comparable to CD 52



Partnership for the  
Advancement of  
New Americans



alliance  
SAN DIEGO



Communities Included:  
**Spring Valley, La Presa,  
Lemon Grove, La Mesa,  
College Area, El Cajon, Golden  
Hill, North Park, Normal Heights,  
Mission Valley East, Linda  
Vista, Mesa's, UCSD**

## CVAPs

Black CVAP: 8.25%  
Latinx CVAP: 21.28%  
API CVAP: 14.38%



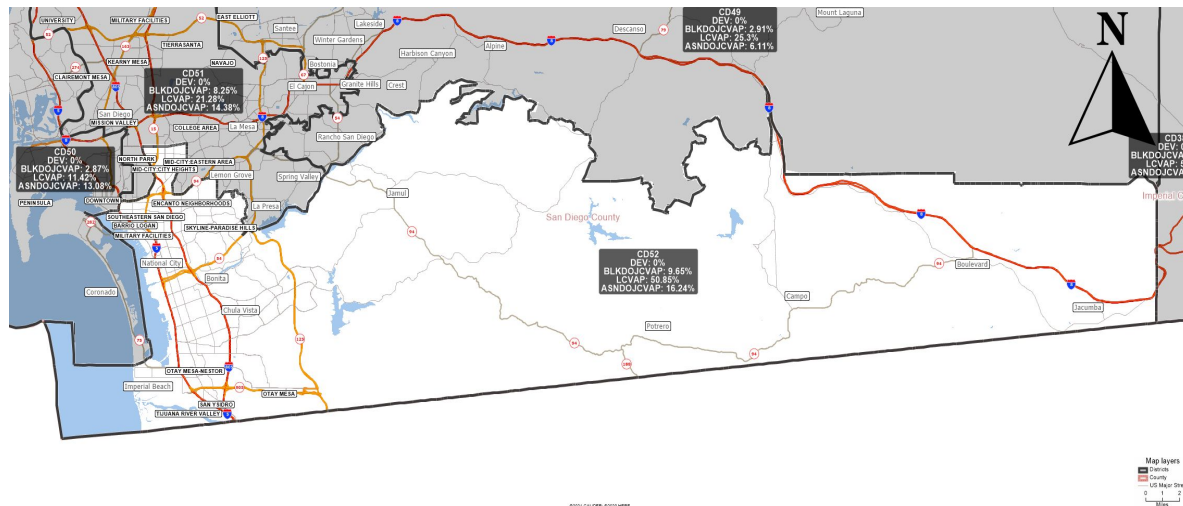
# Congressional Map: Comparable to CD 51



Partnership for the  
Advancement of  
New Americans



alliance  
SAN DIEGO



Communities Included:  
**City Heights, Southeast,**  
National City, Chula Vista, Otay  
Mesa, Imperial Beach, **Barrio**  
**Logan, San Ysidro, Border**

## CVAPs

Black CVAP: 9.65%

Latinx CVAP: 50.85%

API CVAP: 16.24%



# Community Dialogue



Partnership for the  
Advancement of  
New Americans



alliance  
SAN DIEGO

# Next Steps

---

Advocacy at the CA Citizens  
Redistricting Commission

## CA Citizens Redistricting Commission

### Public Input Session

- November 18 & 19, 3pm-8pm
  - November 20, 10am-3pm
  - (As needed) November 22 & 23, 9:30am-2:30pm
- 

### Black Census and Redistricting Hub Advocacy Prep

- Wednesday, November 17th, 4pm-6pm
- Link to join: TBD

You can visit:

[https://www.alliancesd.org/redistricting\\_events](https://www.alliancesd.org/redistricting_events) to stay updated on way to advocate.

# Thank you for attending today and your future advocacy!



Partnership for the  
Advancement of  
New Americans



alliance  
SAN DIEGO