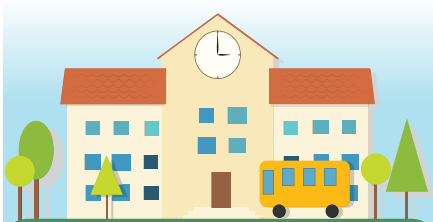




HEALTH CARE FOR ALL FAMILIES

A PROJECT OF THE CHILDREN'S PARTNERSHIP



HEALTHY STUDENTS MAKE GOOD LEARNERS

GET MORE INFORMATION AT:

www.allinforhealth.org
(916) 844-2413

ALL IN is a Campaign to equip education leaders with the tools they need to educate families and individuals in the school, early learning, and after-school communities about health coverage opportunities and connect uninsured children, parents, and employees to health coverage. Our anchor partners are:



HEALTH CARE FOR ALL FAMILIES

A PROJECT OF THE CHILDREN'S PARTNERSHIP



HEALTHY STUDENTS MAKE GOOD LEARNERS

GET MORE INFORMATION AT:

www.allinforhealth.org
(916) 844-2413

ALL IN is a Campaign to equip education leaders with the tools they need to educate families and individuals in the school, early learning, and after-school communities about health coverage opportunities and connect uninsured children, parents, and employees to health coverage. Our anchor partners are:



HEALTH CARE FOR ALL FAMILIES

A PROJECT OF THE CHILDREN'S PARTNERSHIP



HEALTHY STUDENTS MAKE GOOD LEARNERS

GET MORE INFORMATION AT:

www.allinforhealth.org
(916) 844-2413

ALL IN is a Campaign to equip education leaders with the tools they need to educate families and individuals in the school, early learning, and after-school communities about health coverage opportunities and connect uninsured children, parents, and employees to health coverage. Our anchor partners are:



HEALTH CARE FOR ALL FAMILIES

A PROJECT OF THE CHILDREN'S PARTNERSHIP



HEALTHY STUDENTS MAKE GOOD LEARNERS

GET MORE INFORMATION AT:

www.allinforhealth.org
(916) 844-2413

ALL IN is a Campaign to equip education leaders with the tools they need to educate families and individuals in the school, early learning, and after-school communities about health coverage opportunities and connect uninsured children, parents, and employees to health coverage. Our anchor partners are:





HEALTH CARE
FOR ALL FAMILIES



HEALTH CARE
FOR ALL FAMILIES



HEALTH CARE
FOR ALL FAMILIES



HEALTH CARE
FOR ALL FAMILIES



ALL YEAR
2014-2015

**MAKE SURE YOU HAVE
HEALTH COVERAGE.**

- ▶ If eligible, **enroll in Medi-Cal anytime.**
- ▶ **If you lost your health coverage**, find out if you qualify for Special Enrollment in Covered California anytime.
- ▶ **If you don't have health coverage and don't qualify for Medi-Cal**, enroll during Covered California's open enrollment between November 15, 2014 and February 15, 2015.

**DON'T LOSE YOUR
HEALTH COVERAGE.**

- ▶ **RENEW Medi-Cal coverage every year.** Look for a letter from your local county social service department requesting information. Complete and return.
- ▶ **RENEW or CHANGE your Covered California health coverage** between October 1 and December 15, 2014. Covered California will contact you to make sure you keep coverage.

For more information about Covered California and Medi-Cal enrollment, contact **1 (800) 300-1506** OR visit **www.coveredca.com**. For Medi-Cal assistance please contact your county social service department or dial 211.



ALL YEAR
2014-2015

**MAKE SURE YOU HAVE
HEALTH COVERAGE.**

- ▶ If eligible, **enroll in Medi-Cal anytime.**
- ▶ **If you lost your health coverage**, find out if you qualify for Special Enrollment in Covered California anytime.
- ▶ **If you don't have health coverage and don't qualify for Medi-Cal**, enroll during Covered California's open enrollment between November 15, 2014 and February 15, 2015.

**DON'T LOSE YOUR
HEALTH COVERAGE.**

- ▶ **RENEW Medi-Cal coverage every year.** Look for a letter from your local county social service department requesting information. Complete and return.
- ▶ **RENEW or CHANGE your Covered California health coverage** between October 1 and December 15, 2014. Covered California will contact you to make sure you keep coverage.

For more information about Covered California and Medi-Cal enrollment, contact **1 (800) 300-1506** OR visit **www.coveredca.com**. For Medi-Cal assistance please contact your county social service department or dial 211.



ALL YEAR
2014-2015

**MAKE SURE YOU HAVE
HEALTH COVERAGE.**

- ▶ If eligible, **enroll in Medi-Cal anytime.**
- ▶ **If you lost your health coverage**, find out if you qualify for Special Enrollment in Covered California anytime.
- ▶ **If you don't have health coverage and don't qualify for Medi-Cal**, enroll during Covered California's open enrollment between November 15, 2014 and February 15, 2015.

**DON'T LOSE YOUR
HEALTH COVERAGE.**

- ▶ **RENEW Medi-Cal coverage every year.** Look for a letter from your local county social service department requesting information. Complete and return.
- ▶ **RENEW or CHANGE your Covered California health coverage** between October 1 and December 15, 2014. Covered California will contact you to make sure you keep coverage.

For more information about Covered California and Medi-Cal enrollment, contact **1 (800) 300-1506** OR visit **www.coveredca.com**. For Medi-Cal assistance please contact your county social service department or dial 211.



ALL YEAR
2014-2015

**MAKE SURE YOU HAVE
HEALTH COVERAGE.**

- ▶ If eligible, **enroll in Medi-Cal anytime.**
- ▶ **If you lost your health coverage**, find out if you qualify for Special Enrollment in Covered California anytime.
- ▶ **If you don't have health coverage and don't qualify for Medi-Cal**, enroll during Covered California's open enrollment between November 15, 2014 and February 15, 2015.

**DON'T LOSE YOUR
HEALTH COVERAGE.**

- ▶ **RENEW Medi-Cal coverage every year.** Look for a letter from your local county social service department requesting information. Complete and return.
- ▶ **RENEW or CHANGE your Covered California health coverage** between October 1 and December 15, 2014. Covered California will contact you to make sure you keep coverage.

For more information about Covered California and Medi-Cal enrollment, contact **1 (800) 300-1506** OR visit **www.coveredca.com**. For Medi-Cal assistance please contact your county social service department or dial 211.

www.allinforhealth.org

www.allinforhealth.org

www.allinforhealth.org

www.allinforhealth.org