



St John

Patch N Go Kit



Ideal for the backpack, handbag or school bag, the Patch 'n' Go First Aid Kit will keep you safe on the go. You'll always be ready with bandages, dressings and swabs to treat any minor injury, any time.

CONTENTS

- 1 Resealable Plastic Small Bag
- 1 Resealable Plastic Medium Bag
- 1 Conforming Bandage 7.5cm
- 1 Triangular Bandage 110cm
- 1 Emergency Accident Blanket
- 2 Non-Adherent Dressing 7.5cm x 7.5cm
- 1 Wound Dressing No. 15
- 1 CPR Face Shield With Valve
- 1 Gloves Nitrile Large 2s
- 1 Plastic Adhesive Strips 50s
- 1 Gauze Swabs 7.5cm x 7.5cm 3s
- 1 Hypoallergenic Tape 2.5cm x 9m
- 1 Assorted Safety Pins 12s
- 1 Sharp-Blunt Stainless Steel Scissors 12.5cm
- 2 Antiseptic Wipes
- 1 St John First Aid Quick Reference Guide
- 1 Tweezers



Proceeds support local communities

Small Leisure Kit



Ideal for 1-2 people, the Small Leisure Kit includes a comprehensive range of first aid items for common injuries in a small or medium household.

CONTENTS

1	Crepe Bandage 5cm		
1	Crepe Bandage 7.5cm		
2	Triangular Bandage 110cm		
1	Emergency Accident Blanket		
2	Combine Dressing 10cm x 10cm		
2	Non-Adherent Dressing 7.5cm x 10cm		
1	CPR Face Shield Without Valve		
1	Large 2s Nitrile Gloves		
1	Sharp-Blunt Stainless Steel Scissors 12.5cm		
1	Plastic Adhesive Strips 50s		
1	Gauze Swabs 7.5cm x 7.5cm 3s		
1	Hypoallergenic Tape 1.25cm x 9m		
1	Sharp Stainless Steel Forceps 12.5cm	1	Eye Pad
1	Assorted Safety Pins 12s	5	Alcohol Swabs x5
1	Burnaid Sachet 3.5g	10	Antiseptic Wipes
1	Itch Relief Sachet 1g 5s	1	Emergency First Aid A Quick Guide
2	Saline Eye And Wound Irrigation 15mL	1	St John Notepad and Pencil



Proceeds support local communities

Medium Leisure Kit



Ideal for 3-6 people, the Medium Leisure Kit includes an extensive range of first aid equipment for a wider range of more serious injuries in and out of the home.

CONTENTS

- | | | | |
|---|--------------------------------------|----|--------------------------------------|
| 1 | Biohazard Specimen Bag | | |
| 1 | Crepe Bandage 5cm | | |
| 2 | Crepe Bandage 7.5cm | | |
| 2 | Crepe Bandage 10cm | | |
| 2 | Triangular Bandage 110cm | | |
| 1 | Emergency Accident Blanket | | |
| 1 | Instant Cold Pack | | |
| 2 | Combine Dressing 10cm x 10cm | | |
| 2 | Island Adhesive Dressing 8.3cm x 6cm | | |
| 2 | Non-Adherent Dressing 7.5cm x 10cm | | |
| 1 | CPR Face Shield Without Valve | | |
| 2 | Large 2s Nitrile Gloves | | |
| 2 | Eye Pad | | |
| 1 | Plastic Adhesive Strips 50s | 1 | Itch Relief Sachet 1g 5s |
| 3 | Swabs Gauze 7.5cm x 7.5cm 3s | 5 | Saline Eye and Wound Irrigation 15mL |
| 1 | Hypoallergenic Tape 2.5cm x 9m | 1 | Sharp-Blunt Stainless Steel Scissors |
| 1 | Sharp Stainless Steel Forceps 12.5cm | 10 | Alcohol Swabs |
| 1 | Assorted Safety Pins 12s | 10 | Antiseptic Wipes |
| 1 | Splinter Probes 5s | 1 | Emergency First Aid Quick Guide |
| 2 | Burnaid Sachet 3.5g | 1 | St John Notepad and Pencil |



Proceeds support local communities

Large Leisure Kit



Ideal for 6 or more people, the Large Leisure Kit is a complete first aid solution for personal and leisure use. It includes all first aid equipment needed in case of common and more serious injuries resulting in major trauma and heavy bleeding.

CONTENTS

2	Biohazard Specimen Bag		
2	Crepe Bandage 10cm		
1	Crepe Bandage 5cm		
2	Crepe Bandage 7.5cm		
2	Triangular Bandage 110cm		
1	Emergency Accident Blanket		
1	Instant Cold Pack		
2	Combine Dressing 10cm x 10cm		
2	Combine Dressing 10cm x 20cm		
2	Non-Adherent Dressing 7.5cm x 10cm		
2	Non-Adherent Dressing 5cm x 5cm		
5	Island Adhesive Dressing 8.3cm x 6cm	1	Zinc Oxide Tape 2.5cm x 5m
1	Length Adhesive Dressing 6cm x 1m	1	Sharp Stainless Steel Forceps 12.5cm
1	Universal Dressing 43cm x 20cm	1	Assorted Safety Pins 12s
1	CPR Face Shield Without Valve	1	Splinter Probes 5s
5	Large 2s Nitrile Gloves	2	Itch Relief Sachet 1g 5s
2	Eye Pad	4	Sunscreen Sachet
1	Fabric Adhesive Strips 50s	10	Saline Eye and Wound Irrigation 15mL
1	Plastic Adhesive Strips 50s	1	Sharp-Blunt Stainless Steel Scissors 12.5cm
3	Gauze Swabs 7.5cm x 7.5cm 3s	1	Universal Shears
1	Hypoallergenic Tape 2.5cm x 9m	1	Alcohol Swabs 10s
		1	Antiseptic 10s Swabs



Proceeds support local communities

Boating Safety Kit



For boating enthusiasts, injuries can happen both on and off the water. The Boating Safety Kit is housed in a water-resistant container with all the first aid equipment needed for effective treatment of basic injuries.

CONTENTS

- | | | | |
|---|---|---|------------------------------|
| 1 | Small Resealable Plastic Bag | | |
| 1 | Large Resealable Plastic Bag | | |
| 1 | Crepe Bandage 7.5cm | | |
| 1 | Crepe Bandage 10cm | | |
| 1 | Triangular Bandage 110cm | | |
| 1 | Emergency Accident Blanket | | |
| 2 | Non-Adherent Dressing 7.5cm x 10cm | | |
| 1 | Wound Dressing No. 15 | | |
| 1 | CPR Face Shield With Valve | | |
| 1 | Large 2s Nitrile Gloves | | |
| 2 | Eye Pad | | |
| 1 | Plastic Adhesive Shapes 20s | | |
| 1 | Hypoallergenic Tape 1.25cm x 9m | | |
| 2 | Itch Relief Sachet 1g | 4 | Antiseptic Wipes |
| 2 | Sunscreen Sachet | 1 | St First Aid Quick Reference |
| 2 | Saline Eye and Wound Irrigation 15mL | 1 | Glow stick |
| 1 | Sharp-Blunt Stainless Steel Scissors 12.5cm | 1 | Disposable Poncho |
| 1 | Tweezers | 1 | Whistle |



Proceeds support local communities

Car Safety Kit



In a motor vehicle accident you only have minutes to act. The Car Safety Kit has high quality first aid items to treat injuries common to motor vehicles, and useful safety items to ensure you are safe on the road whenever and wherever first aid is needed.

CONTENTS

- 1 Small Resealable Plastic Bag
- 1 Medium Resealable Plastic Bag
- 1 Conforming Bandage 5cm
- 1 Triangular Bandage 110cm
- 1 Emergency Accident Blanket
- 2 Non-Adherent Dressing 10cm x 10cm
- 1 Wound Dressing No. 15
- 1 CPR Face Shield With Valve
- 1 Large 2s Nitrile Gloves
- 2 Eye Pad
- 1 Plastic Adhesive Strips 50s
- 1 Hypoallergenic Tape 1.25cm x 9m
- 1 Assorted Safety Pins 12s
- 1 Sharp-Blunt Stainless Steel Scissors 12.5cm
- 2 Antiseptic Wipes
- 1 St John First Aid Quick Reference guide
- 1 St John Notepad And Pencil
- 1 Safety Triangle
- 1 High Visibility Safety Vest



Proceeds support local communities

Camping Safety Kit



Injuries in remote areas can become serious quickly. The Camping Safety Kit comes with all the first aid and personal safety tools just in case you get hurt, lost or bitten in the outdoors.

CONTENTS

- 1 Small Resealable Plastic Bag
- 1 Medium Resealable Plastic Bag
- 1 Crepe Bandage 7.5cm
- 2 Crepe Bandage 10cm
- 2 Triangular Bandage 110cm
- 1 Emergency Accident Blanket
- 1 Instant Cold Pack
- 2 Non-Adherent Dressing 7.5cm x 10cm
- 1 Wound Dressing No. 15
- 2 Eye Pad
- 1 CPR Face Shield With Valve
- 1 Large 2s Nitrile Gloves
- 1 Plastic Adhesive Shapes 20s
- 1 Hypoallergenic Tape 1.25cm x 9m
- 2 Itch Relief Sachet 1g
- 2 Saline Eye and Wound Irrigation 15mL
- 1 Sharp-Blunt Stainless Steel Scissors 12.5cm
- 1 Tweezers
- 4 Antiseptic Wipes
- 1 St John First Aid Quick Reference
- 6 Waterproof Matches
- 1 Disposable Poncho
- 1 Whistle/Compass



Proceeds support local communities

Tiny Tots Safety Kit



Babies and toddlers are prone to misadventure. This kit combines first aid and other safety items to ensure parents and carers are prepared to manage common minor injuries and illnesses.

CONTENTS

- 2 Conforming Bandage 5cm
- 1 Triangular Bandage 110cm
- 1 Instant Cold Pack
- 2 Non-Adherent Dressing 5cm x 5cm
- 1 Wound Dressing No. 13
- 1 Plastic Cartoon Adhesive Strips 10s
- 2 Gauze Swabs 7.5cm x 7.5cm 5s
- 1 Stainless Steel Sharp Forceps 12.5cm
- 2 Splinter Probes 5s
- 2 Itch Relief Sachet 1g
- 2 Saline Eye and Wound Irrigation 15mL
- 1 Sharp-Blunt Stainless Steel Scissors 12.5cm
- 2 Antiseptic Wipes
- 5 Plastic Nappy Bags
- 1 First Aid Quick Reference Guide
- 1 CPR Instruction Card
- 1 St John Kid's First Aid Action Plan
- 1 Nail Cutters Baby
- 1 Digital Thermometer
- 10 Nappy Wipes in Airtight Container



Proceeds support local communities

Workplace Kit - Personal



Ideal for the individual, the Personal Workplace Kit is the lightweight and portable first aid solution for the small office or when you're on the go. Contents are suitable to treat common minor injuries and protect the first aider.

CONTENTS

1	Conforming Bandage 5cm		
1	Conforming Bandage 7.5cm		
1	Compression Bandage 10cm		
1	Triangular Bandage 110cm		
1	Emergency Accident Blanket		
2	Non-Adherent Dressing 7.5cm x 10cm		
3	Non-Adherent Dressing 5cm x 5cm		
1	Wound Dressing No. 14		
1	CPR Face Shield Without Valve		
2	Large Nitrile Gloves 2s		
2	Eye Pad		
1	Plastic Adhesive Strips 50s		
2	Gauze Swabs 7.5cm x 7.5cm 5s		
1	Hypoallergenic Tape 2.5cm x 9m		
1	Sharp Stainless Steel Forceps 12.5cm	2	Antiseptic Wipes
1	Safety Assorted Pins 12s	1	Small Resealable Plastic Bag
1	Splinter Probes 5s	1	Medium Resealable Plastic Bag
5	Burnaid Sachets 3.5g	1	Large Resealable Plastic Bag
4	Saline Eye and Wound Irrigation 15mL	1	Emergency First Aid A Quick Guide
1	Sharp-Blunt Stainless Steel Scissors 12.5cm	1	Notepad & Pencil in Bag
6	Povidone-Iodine Swabs	1	Black ballpoint pen



Proceeds support local communities

Workplace Kit- Wallmount



This Workplace Kit is a complete first aid solution for your office, warehouse or onsite location. Contained in a large metal cabinet, this can be wall mounted in your workplace and is easily identifiable and accessible to your employees.

CONTENTS

3	Conforming Bandage 5cm		
3	Conforming Bandage 7.5cm		
1	Compression Bandage 10cm		
2	Triangular Bandage 110cm		
1	Emergency Accident Blanket		
1	Cold Pack Instant		
1	Combine Dressing 10cm x 20cm		
1	Non-Adherent Dressing 10cm x 10cm		
3	Non-Adherent Dressing 7.5cm x 10cm		
6	Non-Adherent Dressing 5cm x 5cm		
1	Wound Dressing No. 14	5	Burnaid Sachet 3.5g
1	Wound Dressing No. 15	8	Saline Eye and Wound Irrigation 15mL
5	Large Nitrile Gloves 2s	1	Sharp-Blunt Stainless Steel Scissors 12.5cm
4	Eye Pad	10	Povidone-Iodine Swabs
1	CPR Pocket Mask	10	Antiseptic Wipes
1	Plastic Adhesive Strips 50s	1	Small Plastic Resealable Bag
5	Gauze Swabs 7.5cm x 7.5cm 5s	1	Medium Plastic Resealable Bag
1	Hypoallergenic Tape 2.5cm x 9m	1	Large Plastic Resealable Bag
1	Sharp Stainless Steel Forceps 12.5cm	1	Emergency First Aid A Quick Guide
1	Assorted Safety Pins 12s	1	Notepad and Pencil
2	Splinter Probes 5s	1	Black Ballpoint Pen



Proceeds support local communities

Workplace Kit – Waist Bag



The Waist bag Workplace Kit can be strapped to your waist in a hurry as you respond to a workplace injury or emergency situation with all basic first aid components at hand. Be prepared for unpredictable workplace injuries and emergencies.

CONTENTS

3	Conforming Bandage 5cm		
3	Conforming Bandage 7.5cm		
1	Compression Bandage 10cm		
2	Triangular Bandage 110cm		
1	Emergency Accident Blanket		
1	Cold Pack Instant		
1	Combine Dressing 10cm x 20cm		
1	Non-Adherent Dressing 10cm x 10cm		
3	Non-Adherent Dressing 7.5cm x 10cm		
6	Non-Adherent Dressing 5cm x 5cm		
1	Wound Dressing No. 14	5	Burnaid Sachet 3.5g
1	Wound Dressing No. 15	8	Saline Eye and Wound Irrigation 15mL
5	Large Nitrile Gloves 2s	1	Sharp-Blunt Stainless Steel Scissors 12.5cm
4	Eye Pad	10	Povidone-Iodine Swabs
1	CPR Pocket Mask	10	Antiseptic Wipes
1	Plastic Adhesive Strips 50s	1	Small Plastic Resealable Bag
5	Gauze Swabs 7.5cm x 7.5cm 5s	1	Medium Plastic Resealable Bag
1	Hypoallergenic Tape 2.5cm x 9m	1	Large Plastic Resealable Bag
1	Sharp Stainless Steel Forceps 12.5cm	1	Emergency First Aid A Quick Guide
1	Assorted Safety Pins 12s	1	Notepad and Pencil
2	Splinter Probes 5s	1	Black Ballpoint Pen



Workplace Kit - Portable



A complete range of first aid equipment that meets the first aid needs of your workplace in a durable and portable container. The extra-strong Portable Workplace Kit is suitable for even the roughest work environment.

CONTENTS

3	Conforming Bandage 5cm		
3	Conforming Bandage 7.5cm		
1	Compression Bandage 10cm		
2	Triangular Bandage 110cm		
1	Emergency Accident Blanket		
1	Cold Pack Instant		
1	Combine Dressing 10cm x 20cm		
1	Non-Adherent Dressing 10cm x 10cm		
3	Non-Adherent Dressing 7.5cm x 10cm		
6	Non-Adherent Dressing 5cm x 5cm		
1	Wound Dressing No. 14	5	Burnaid Sachet 3.5g
1	Wound Dressing No. 15	8	Saline Eye and Wound Irrigation 15mL
5	Large Nitrile Gloves 2s	1	Sharp-Blunt Stainless Steel Scissors 12.5cm
4	Eye Pad	10	Providone-Iodine Swabs
1	CPR Pocket Mask	10	Antiseptic Wipes
1	Plastic Adhesive Strips 50s	1	Small Plastic Resealable Bag
5	Gauze Swabs 7.5cm x 7.5cm 5s	1	Medium Plastic Resealable Bag
1	Hypoallergenic Tape 2.5cm x 9m	1	Large Plastic Resealable Bag
1	Sharp Stainless Steel Forceps 12.5cm	1	Emergency First Aid A Quick Guide
1	Assorted Safety Pins 12s	1	Notepad and Pencil
2	Splinter Probes 5s	1	Black Ballpoint Pen



Proceeds support local communities

Off Road Kit



Ideal for the serious adventurer, this kit ensures you are equipped to deal with a range of minor and serious illnesses and injuries, in areas where medical assistance may be far away.

CONTENTS

- | | | |
|---|--------------------------------|---------------------------------|
| 1 | Heavy crepe bandage 10cm | |
| 1 | Crepe Bandage 5cm | |
| 1 | Crepe Bandage 7.5cm | |
| 1 | Crepe Bandage 10cm | |
| 1 | Hypo-allergenic tape | |
| 2 | Triangular bandage | |
| 1 | Small universal dressing | |
| 1 | Sterile gauze swabs | |
| 2 | Combine pads | |
| 1 | Wound dressing | |
| 1 | Small burns sheet | |
| 2 | Non-adherent pad 7.5 x 10cm | |
| 2 | Large eye pad | |
| 1 | Adhesive strips- 50 | |
| 2 | Large island dressing | |
| 3 | Alcohol swabs | |
| 1 | Sharp/blunt scissors | |
| 1 | Nitrile gloves x 2 | |
| 1 | Sharp forceps | |
| 1 | Emergency accident blanket | |
| 1 | Disposable splinter probes x 5 | |
| 1 | Safety pins (12 in bag) | |
| 1 | Note pad and pencil | |
| | | 1 Disposable towels x 3 |
| | | 1 Emergency First Aid book |
| | | 1 Disposable Resuscitation Mask |
| | | 1 Medium plastic bag |
| | | 1 Stop itch 50g |
| | | 1 Antiseptic swabs (10 in bag) |
| | | 4 Saline Steritube 15ml |
| | | 2 Saline Steritube 30ml |
| | | 1 UP Sunscreen Tube 30+ 100g |



Proceeds support local communities

Bites and Stings Kit



The Bites and Stings Kit is essential for treating bites and stings from the beach to the bush. This kit is clearly labelled and identifiable with its contents protected by a clear hard case

CONTENTS

- 2 Heavy crepe bandage 10cm
- 1 Instant cold pack
- 1 First Aid Quick Reference Guide



Proceeds support local communities

Personal Protection Pack



Ideal for one person, the Personal Protection Pack is a small and compact with basic contents in a soft cased package to help you handle the treatment of minor first aid injuries, resuscitation emergencies and to protect yourself from infection.

CONTENTS

- 1 Face Shield CPR With Valve
- 1 Large Nitrile Gloves (2)
- 1 Plastic Adhesive Strips (10)
- 1 CPR Instruction Card
- 2 Wipes Antiseptic



Proceeds support local communities

Workplace Modules



Optimise your existing first aid kit with one of our workplace modules designed in accordance with the First Aid in the Workplace Code of Practice.

Outdoor module

Necessary if your work takes you outdoors and can expose you to a range of unpredictable first aid emergencies.

CONTENTS

- 1 Compression Bandage 10cm
- 20 Itch Relief Sachet 1g

Remote Module

Ideal where work is in isolated or remote environments where the risk of a first aid emergency is high.

CONTENTS

- 1 Compression Bandage 10cm
- 1 Polyethylene Sheet 61cm x 92cm
- 1 Emergency Accident Blanket
- 1 Torch With Batteries
- 1 Whistle

Burns Module

Recommended for workplaces with a high risk of burns as acting in the first 5 minutes can dramatically reduce long-lasting damage and improves healing time.

CONTENTS

- 1 Conforming Bandage 7.5cm
- 2 Burnaid Dressing 10cm x 10cm
- 1 Polyethylene Sheet 10cm x 10cm
- 1 Polyethylene Sheet 10cm x 20cm
- 1 Polyethylene Sheet 61cm x 92cm
- 8 Burnaid Sachet 3.5g
- 2 Instruction Card Burn Treatment

Laerdal Heartstart HS1



Early defibrillation can dramatically improve survival rates in the event of a sudden cardiac arrest in any work or leisure environment. The Laerdal Heartstart HS1 is a safe, durable and reliable semi-automatic defibrillator ideal for most homes and workplaces.



- ✓ Quick Shock feature reduces the time between chest compressions and a lifesaving shock, improving chances of survival.
- ✓ Machine evaluates the casualty's need for shock and prompts the user to administer it, reducing human error.
- ✓ Voice prompts including CPR coaching guide the user through life saving resuscitation techniques.
- ✓ Data storage and transmission allows you to keep a record of any incident after using the device.
- ✓ Daily automatic self-tests of battery and electrodes means your AED is always ready to use.

Proceeds support local communities

Cardiac Science G5



In the event of an emergency, CPR is sometimes not enough. A shock from a defibrillator will increase the chances of the patient's survival if they are suffering from sudden cardiac arrest (SCA). The Cardiac Science G5 is a high quality, fully automated and durable AED suitable for a range of environments.



- ✓ RescueCoach™ voice assists with resuscitation advice in an emergency situation
- ✓ Text prompts make it a suitable option for noisy environments
- ✓ Interchangeable electrodes that can go on either side of the chest saving vital seconds in an emergency
- ✓ Automatic shocks reduce human error and hesitation
- ✓ Self-tests ensure it is always ready to use
- ✓ Memory allows a record of the incident to be kept and reviewed for up to 90 minutes.
- ✓ Suitable for dusty or wet environments

Proceeds support local communities

Fire Blanket



Every kitchen or kitchenette should be equipped with a Fire Blanket to assist with fire emergencies and reduce the damage caused by oil or clothing fires.

- ✓ Flexible fibreglass fabric
- ✓ Pull tags for removal
- ✓ Instructions for use on packaging
- ✓ Instructions for folding on packaging
- ✓ Packaging is easily identified in an emergency
- ✓ Single use
- ✓ Meets Australian Standard AS/NZS 3504:2006
- ✓ Dimensions (closed): 280mm x 160mm
- ✓ Dimensions (open): 1m x 1m

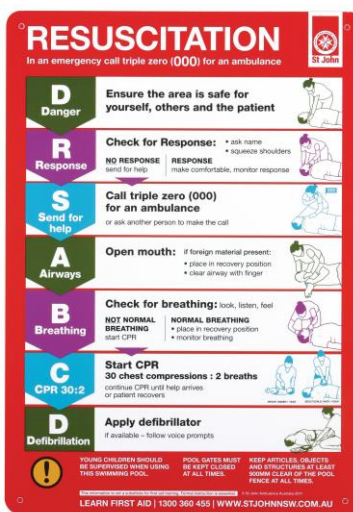


Proceeds support local communities

First Aid Signage



First aid signage is necessary in all workplaces and especially important in workplaces with complicated access to first aid rooms and equipment.



- ✓ First aid signage ensures that your equipment can be quickly identified when needed.
- ✓ Large, clear words and images help to guide someone through an emergency.
- ✓ Signs are easy to install and are made from durable, lightweight material requiring little maintenance.
- ✓ Developed in line with WHS code of practice.