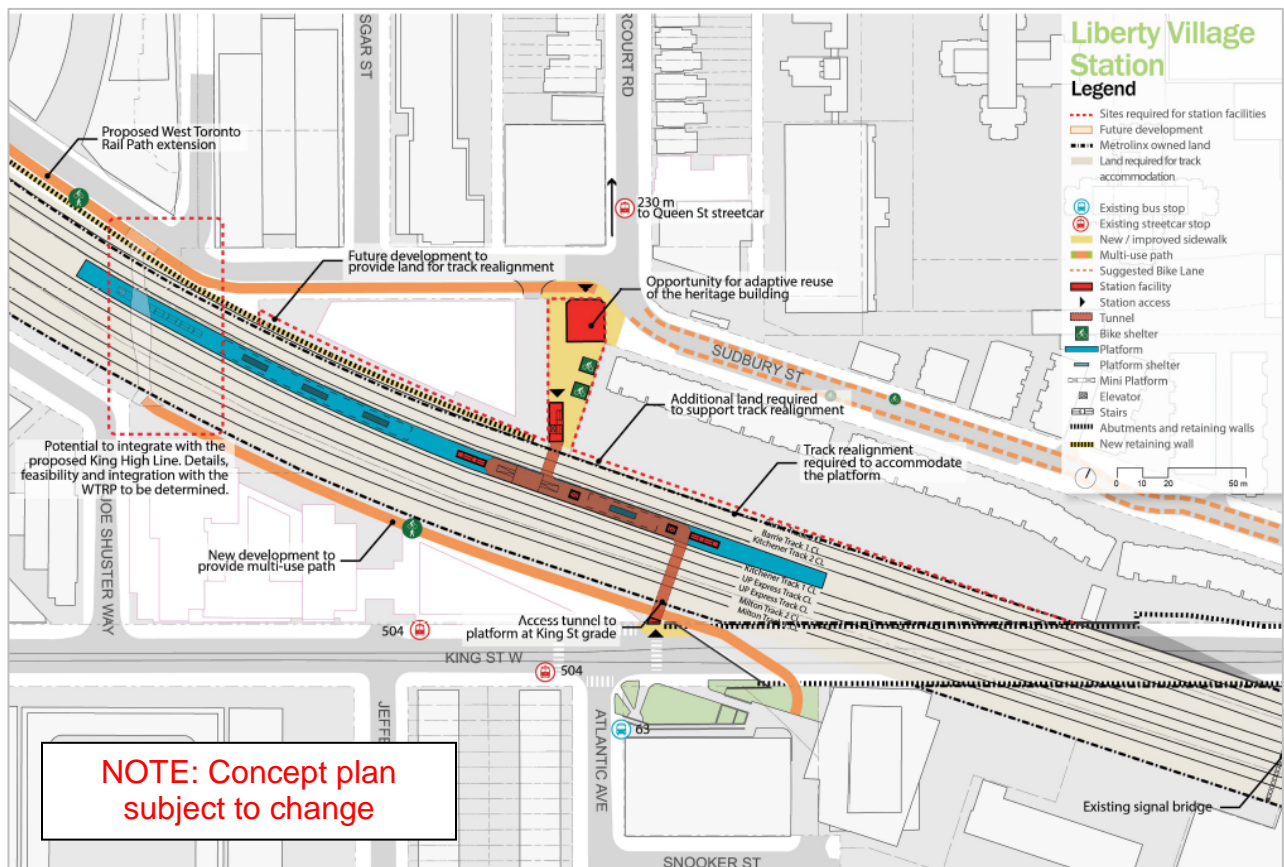


Liberty Village	SmartTrack	Kitchener Corridor
City of Toronto: Approved at Council: November 8, 2016		

Relevant Considerations:

- Due to the number of lines converging through this segment of the rail corridor, as well as property and geometric constraints, only an island platform can be accommodated. This may limit the number of trains that can stop at this location
- Will require continued coordination with the West Toronto Railpath extension and developer-proposed 'King Highline' as these provide both access opportunities and challenges for planning
- Further analysis is required to determine service levels for this station.
- Mixed Use and Employment Area land-use designations in the area offer good existing transit-oriented development potential, current development densities are transit-supportive.



Bloor-Davenport	GO RER	Barrie Corridor
<p><i>City of Toronto: Approved at Council: November 8, 2016</i></p>		

Relevant Considerations:

- Heritage status of rail bridge over Bloor Street and potential impacts on widening need to be determined.
- Bridge widening or additional pedestrian crossing over Bloor for multi-use pathway may impact vertical clearances
- Weather protected connection to Lansdowne Subway Station likely to be phased in through redevelopment of the area
- Mixed-use designations and Employment Area designations in the area permit transit-oriented development, current development densities are transit-supportive
- Site offers potential for integrated transit-oriented development

