



***Building Tomorrow's Vision Today!***



## *Anderson Farm County Park*

*Established 2014*

*Dane County Parks*

*Arthur Sholts Memorial Woods*



# Anderson Park Friends. Inc.



- Established in 2013
- Independent, Non-profit & Volunteer Group
- 501 (c)(3) Organization
- Tax Exempt
- Dane County Parks Department



[www. andersonparkfriends.org](http://www.andersonparkfriends.org)



# Fiscal Support



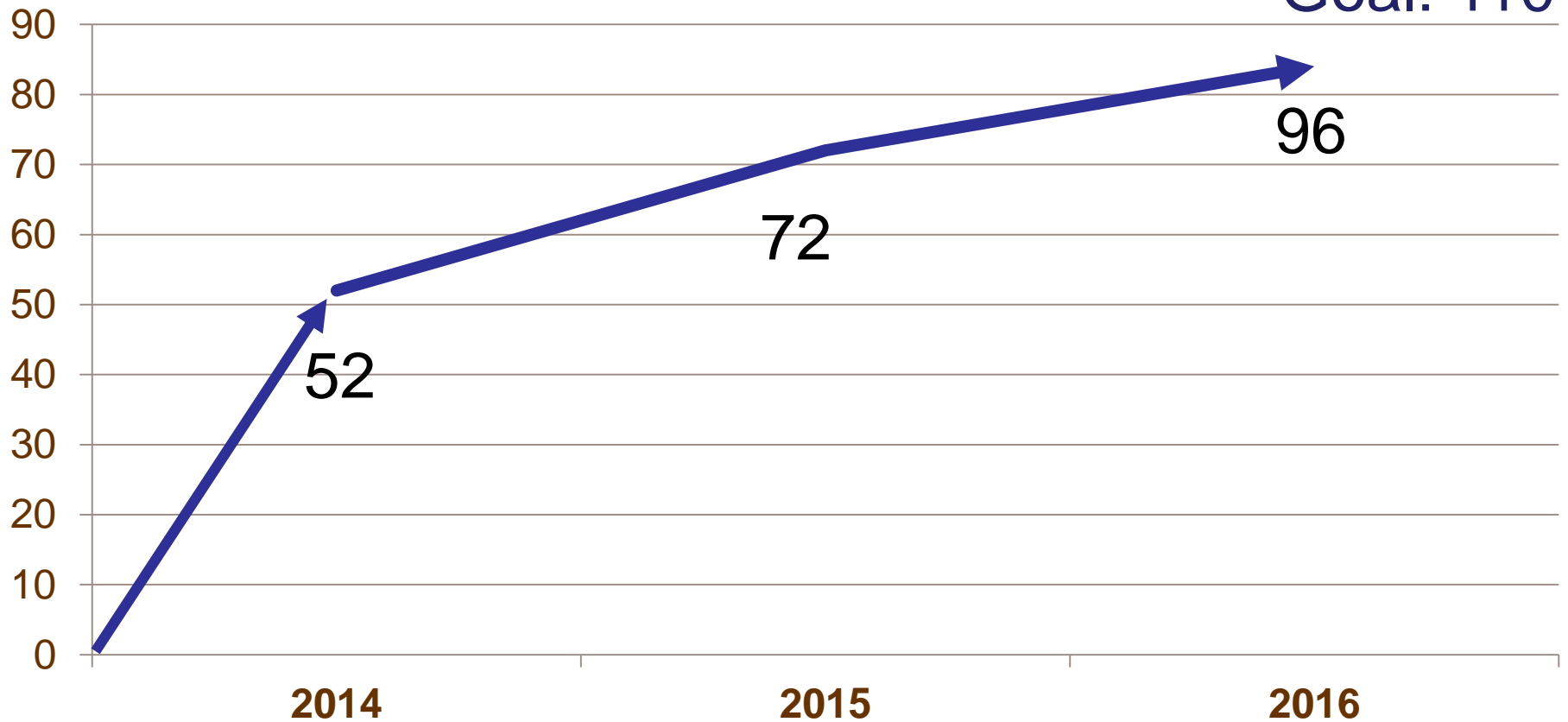
- Membership Dues
- Donations
- Bill's Food Store
- Thrivent Choice (New)
- APF Grants
  1. Volunteer Wisconsin
  2. Natural Resources Foundation of WI
  3. Dane County Environmental Council



# Membership



## Member Growth



# Accomplishments



## Arthur Sholts Memorial Woods

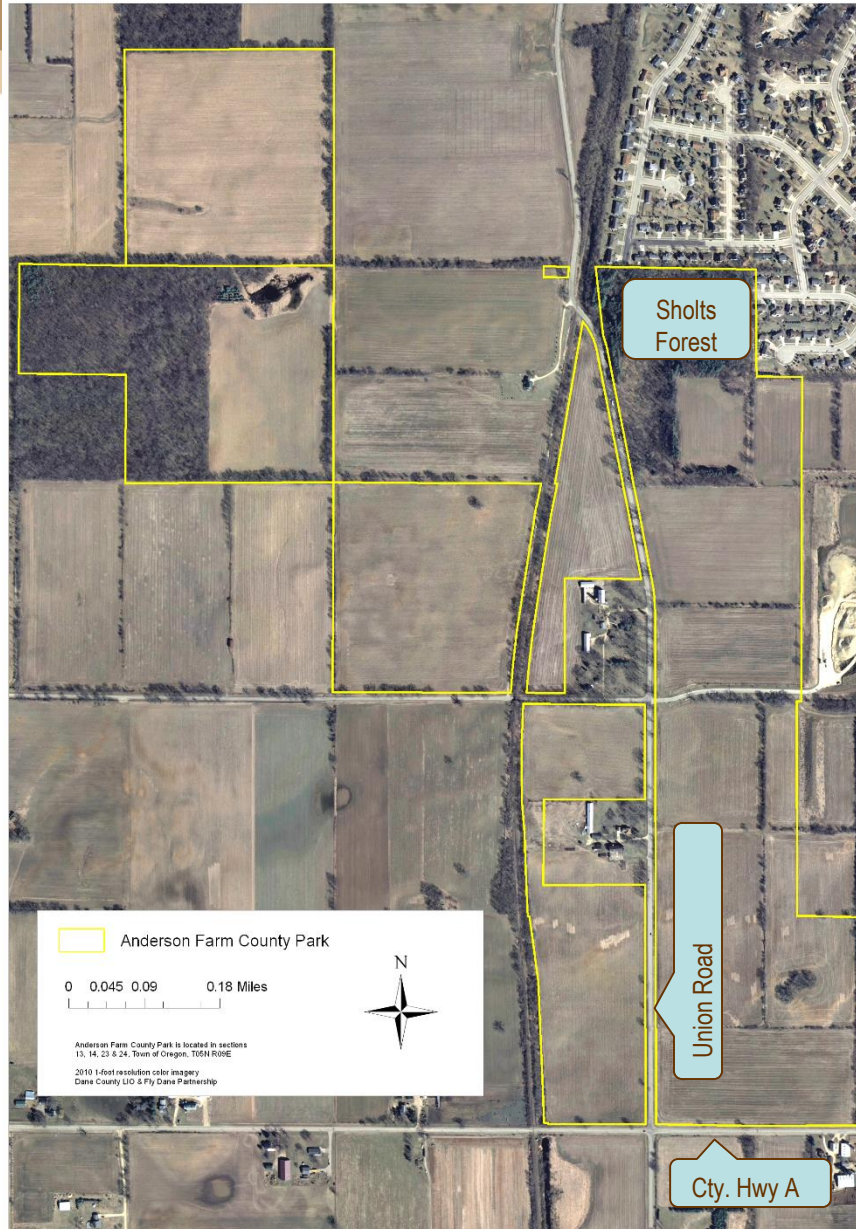
- Park Entrances (3)
- Buckthorn Removal Project

## Arthur Sholts Prairie

## Educational Projects

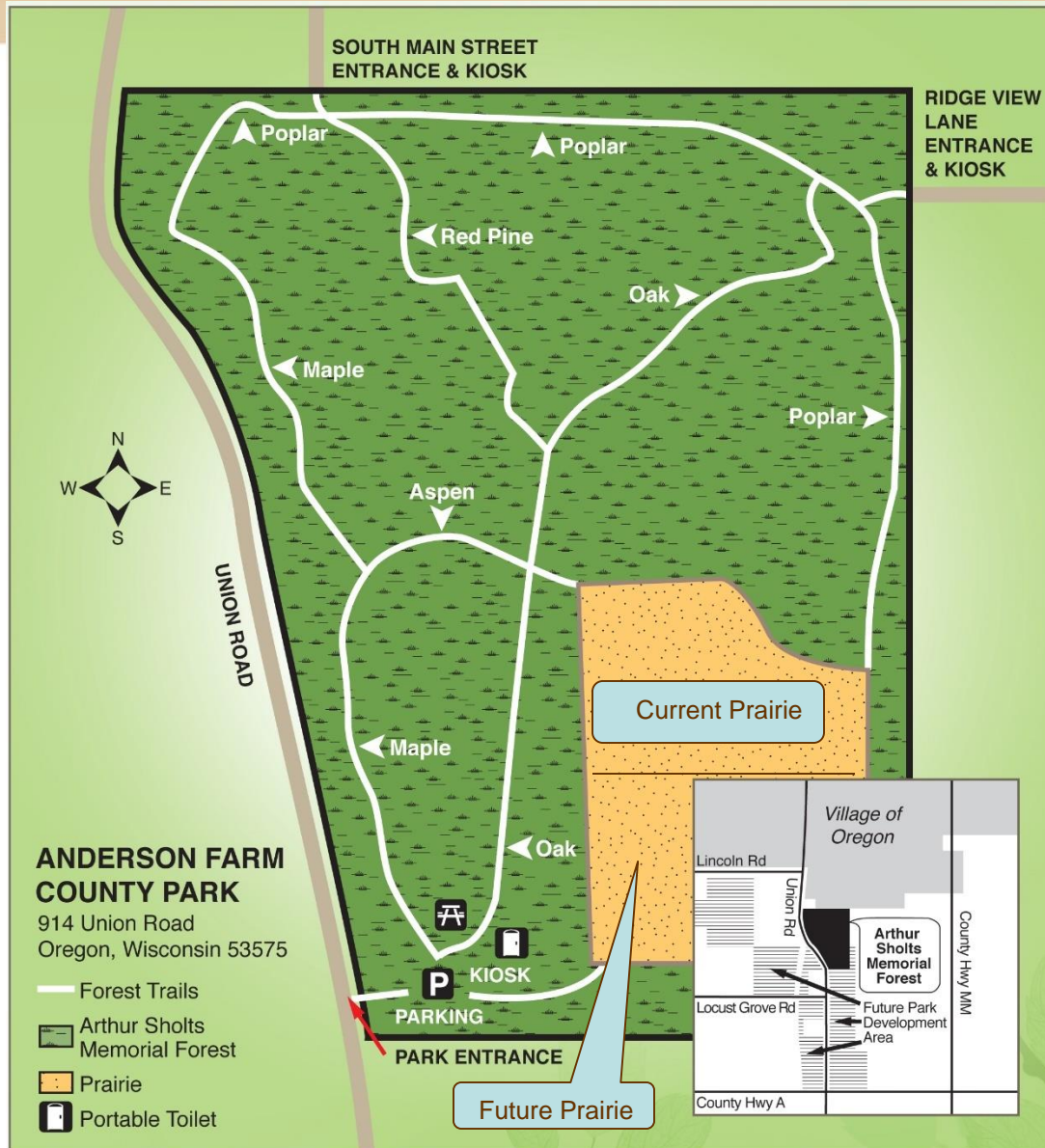
## Parking Lot (Union Road)

# Anderson Farm County Park





# Arthur Sholts Trail Map



# Community Outreach



- St. John's Lutheran Church
- Community of Life Lutheran Church
- Brooklyn "Mighty Mites" 4-H Club
- Oregon High – National Honor Society
- Holy Mother of Consolation Church
- Rotary Club
- Chamber of Commerce
- And Others...

# Upcoming 2016 Events



## Regular & Special Work Events

## Educational Events

## Community Events

- June 27      Work Day (4<sup>th</sup> Monday-summer)
- July 9      Work Day (2<sup>nd</sup> Saturday of month)
- August 13      Work Day (2<sup>nd</sup> Saturday of month)
- September      Special Work Events
- October      Fall Bonfire



# APF Board of Directors



- Roe Parker, President
- Nancy Murphy, Secretary
- Barbara Hill, Treasurer
- Andy Hoernemann, Vice President
- Sue Eagle, At Large

## Local Supporters

Arbor Systems, Fiskars, Stihl, Wayne Ace Limo Service,  
Fitchburg Farms, Oregon Observer

# Arthur Sholts Memorial Woods





# Arthur Sholts Memorial Woods-Before

(2014)





# Sholts Project-After (2014)





# Eagle Scout Project (November 2014)



Ridgeview Street Entrance-  
Before





# Ridgeview Lane Results!



Ridgeview Street Entrance-After





# New Picnic Area

# Picnic Area (Before)





# WI Natural Resources Grant





# Picnic Area (After)







# New Prairie

2015





# Prairie Birthday: May 6, 2016





# People Power



# Volunteers





# St. John's Lutheran Church



Work Day: September 13, 2015 ([Video](#))



# Sept. 13<sup>th</sup> Volunteers (partial)











# Education

(STEAM)

# Maple Syrup Day (March 13, 2015)





# 2015 Arbor Day (Netherwood – 4<sup>th</sup> Graders)





# 2015 Arbor Day (Netherwood – 4<sup>th</sup> Graders)





# Arbor Day 2016





# Beyond 2016



# Upgrade Park Entrances



# Dog Park

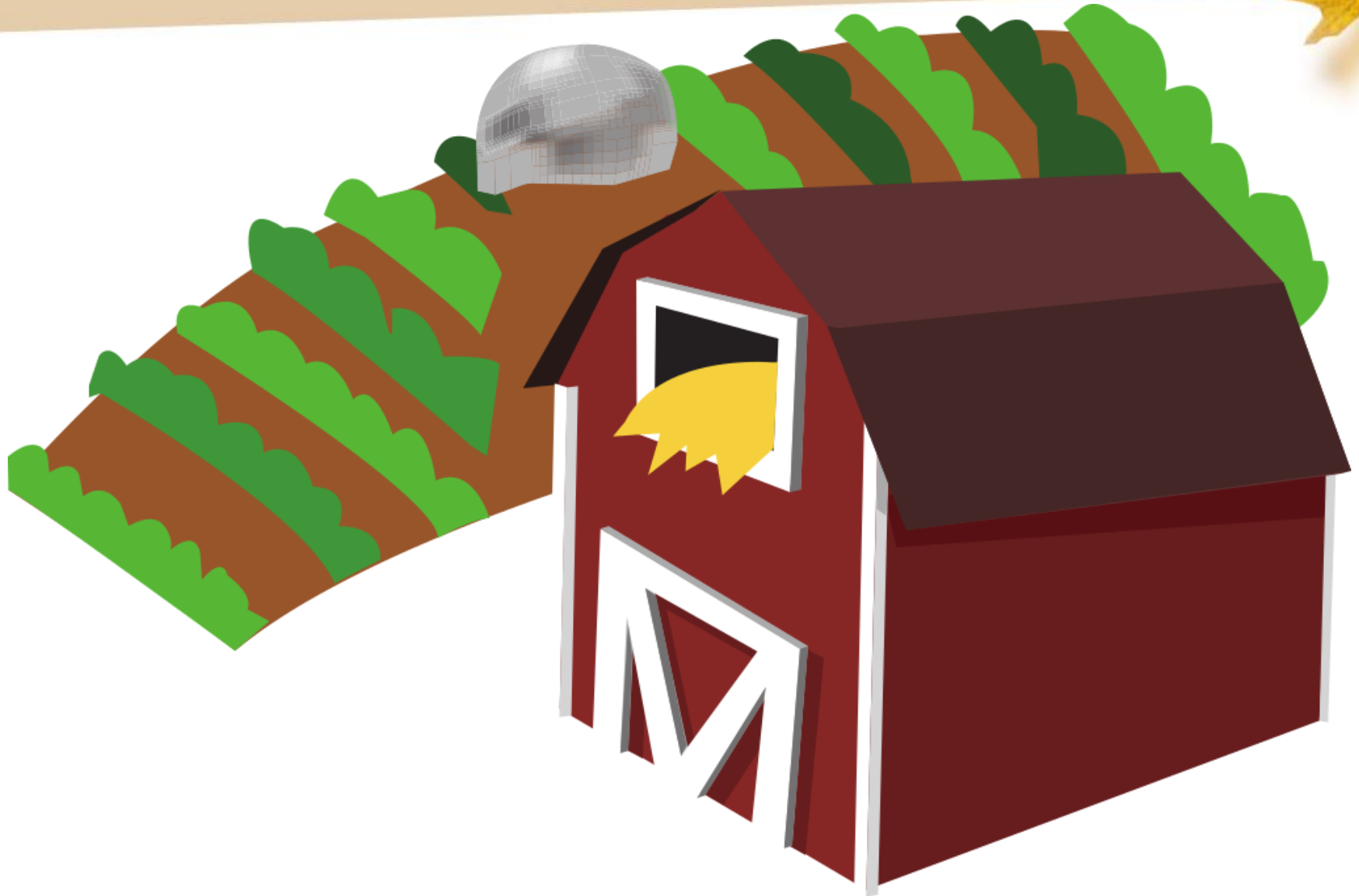




# Bikes



# Agriculture







# Dane County Supports Oregon







# ANDERSON PARK

— FRIENDS —

Find Us At:

[www.andersonparkfriends.org](http://www.andersonparkfriends.org)

[www.facebook.com/AndersonParkFriends](https://www.facebook.com/AndersonParkFriends)