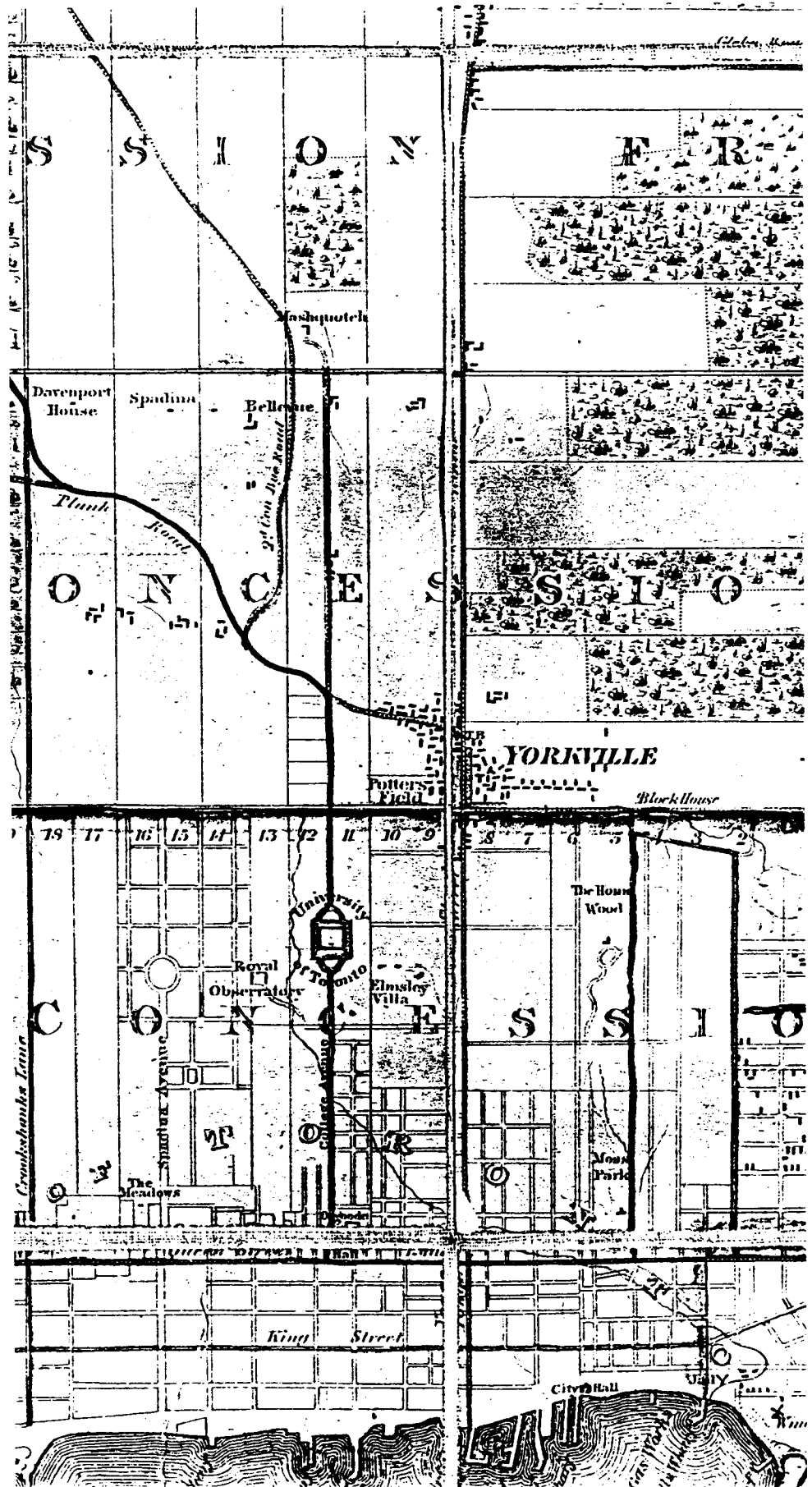


## 5. Appendix - Historic Maps of the East Annex

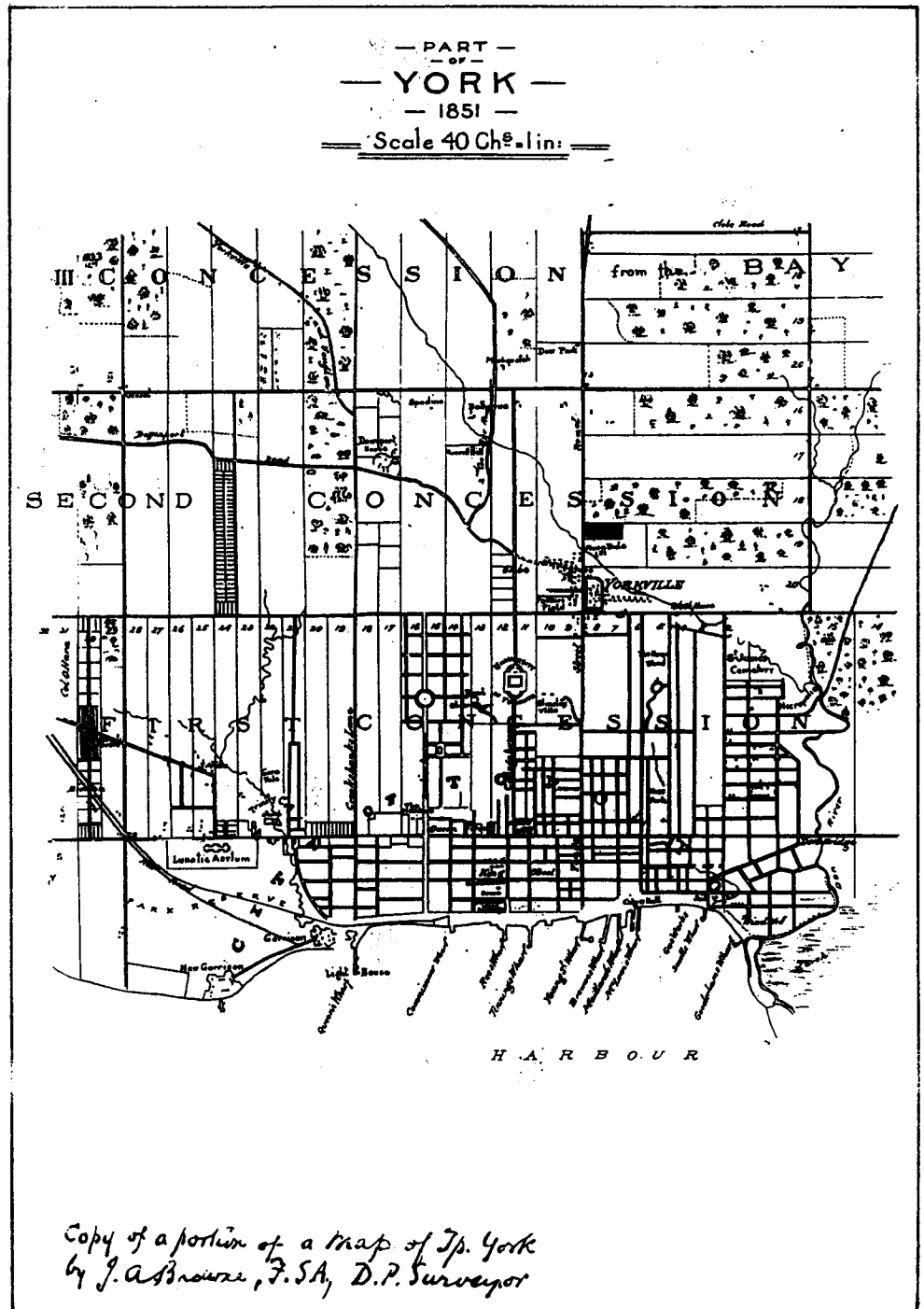


**1851  
TOWNSHIP OF  
YORK.  
J.D. BROWNE  
(Metro Toronto  
Public Library)**



*This map shows the subdivision of the lands west of Avenue Road into lots. The Village of Yorkville is centred around Yonge Street. Potter's Field was the cemetery at the corner of Yonge and Bloor.*

**1851  
PART OF YORK  
(MTPL)**



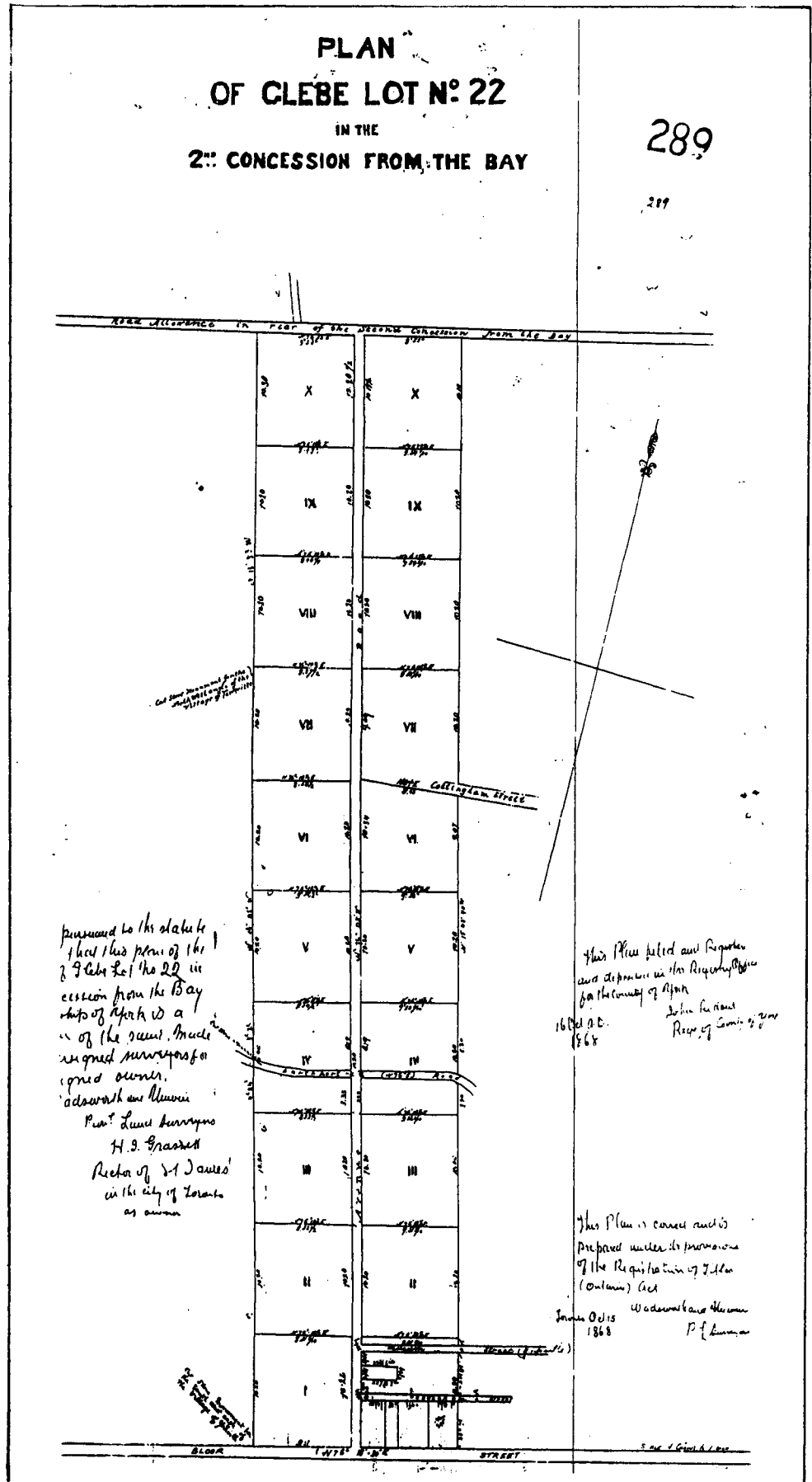
This map shows the subdivision of lots west of Avenue Road. Avenue Road is labelled 'Glebe' and was land owned by the Anglican Church. A remanent of this ownership is the Church of the Redeemer at Avenue Road and Bloor.

**PLAN OF GLEBE  
289. Lot 22**

**PLAN  
OF GLEBE LOT N<sup>o</sup> 22  
IN THE  
2<sup>nd</sup> CONCESSION FROM THE BAY**

289

289



This plan shows the subdivision of the Glebe lands by the Anglican Church (circa 1868). The lands centre of Avenue Road. Notice the locations of the streets, Yorkville, Cumberland and Davenport Road.

1874  
 SUBDIVISION  
 PLAN  
 WEST SIDE OF  
 AVENUE ROAD,  
 YORKVILLE

377

PLAN OF THE SUBDIVISION OF

LOT N<sup>o</sup> 2

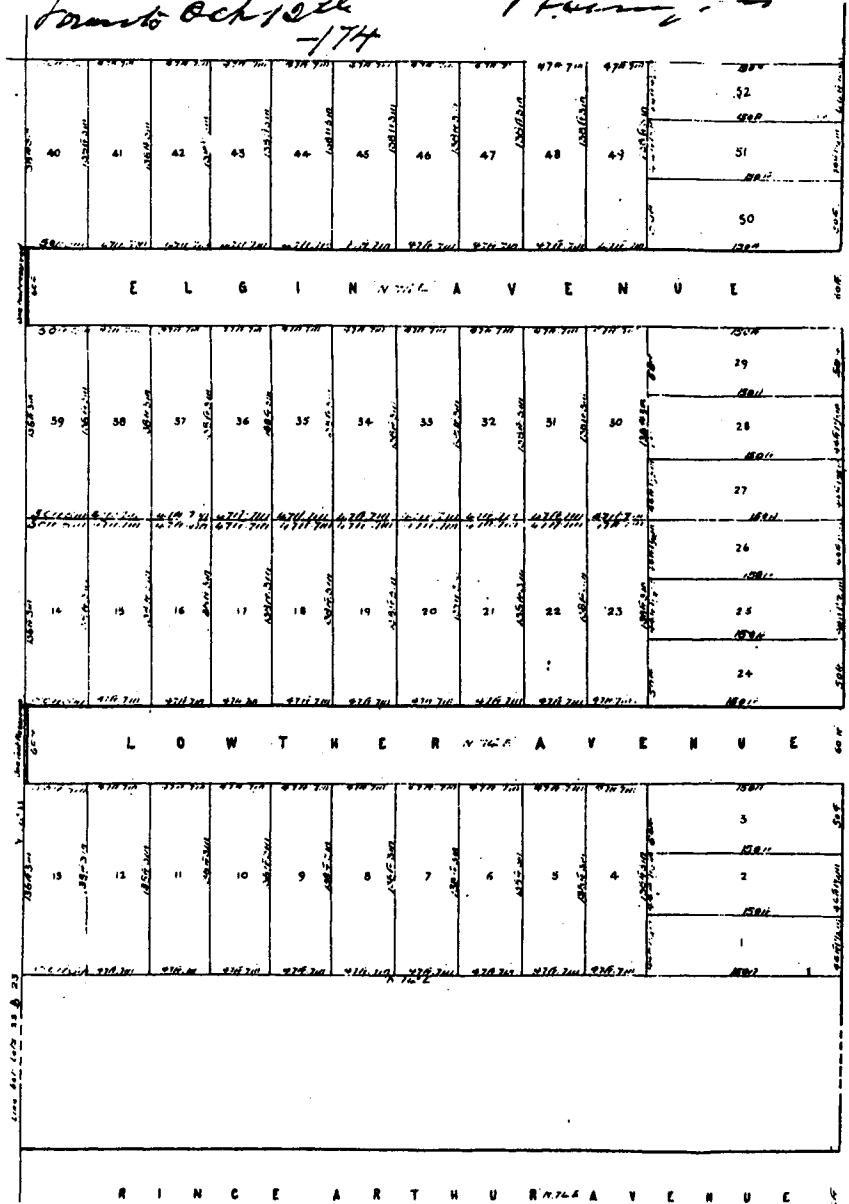
WEST SIDE OF AVENUE ROAD, YORKVILLE.

PART OF THE ESTATE OF THE LATE

JOHN WORTHINGTON ESQ

Scale. One Inch equals Sixty Feet.

*This Plan is correct and  
 is prepared under the provisions  
 of the Provisions of Titles (Act)  
 etc. —*  
*Traverse Oct 12th 1874*



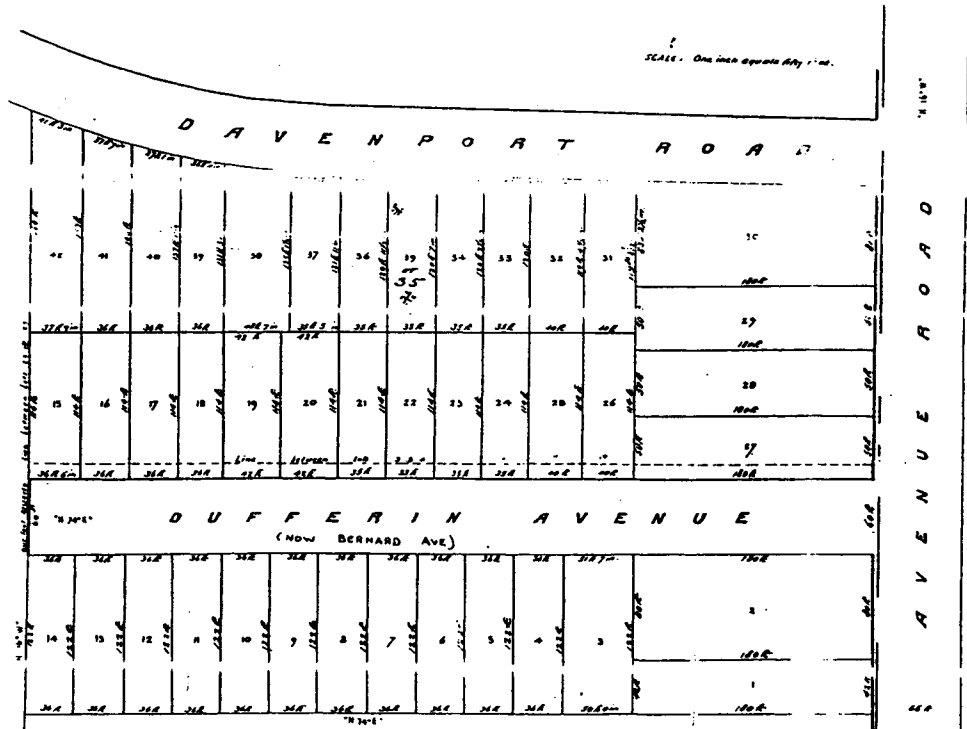
This is the subdivision  
 plan for Lowther and  
 Elgin. Note the lots  
 were originally of fairly  
 uniform width.

**1874  
SUBDIVISION  
PLAN FOR  
DAVENPORT  
ROAD AND  
BERNARD AVE.**

*PLAN OF  
BUILDING LOTS IN YORKVILLE.*

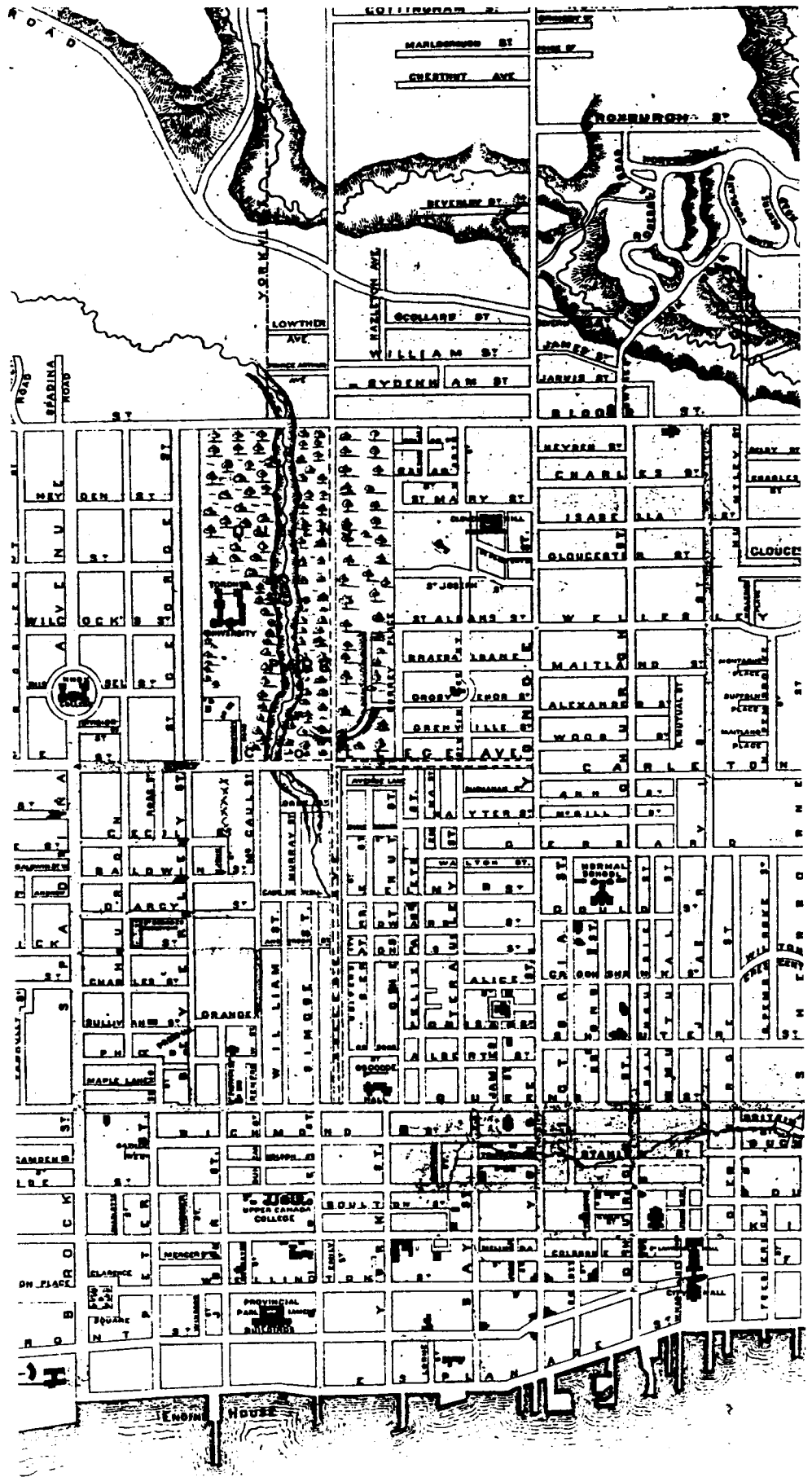
*PARTS OF LOTS 3 & 4. WEST SIDE OF AVENUE ROAD.*

*IN THE DIVISION OF LOT 22. 2<sup>ND</sup> CORN FROM BAY. YORK.*



*This is the plan of subdivision of Bernard Avenue (Dufferin) and Davenport Road. Note that the lots are fairly uniform in width, but smaller than those proposed for Lowther and Elgin.*

**1876  
PLAN FOR THE  
CITY OF  
TORONTO  
SHEWING THE  
GENERAL SYSTEM  
OF WATERWORKS  
(MTPL)**



*This is a general map of the City of Toronto in 1876. Note that it shows only Lowther and Prince Arthur as constructed. It also shows the open river bed of Taddle Creek just south of Prince Arthur Avenue.*

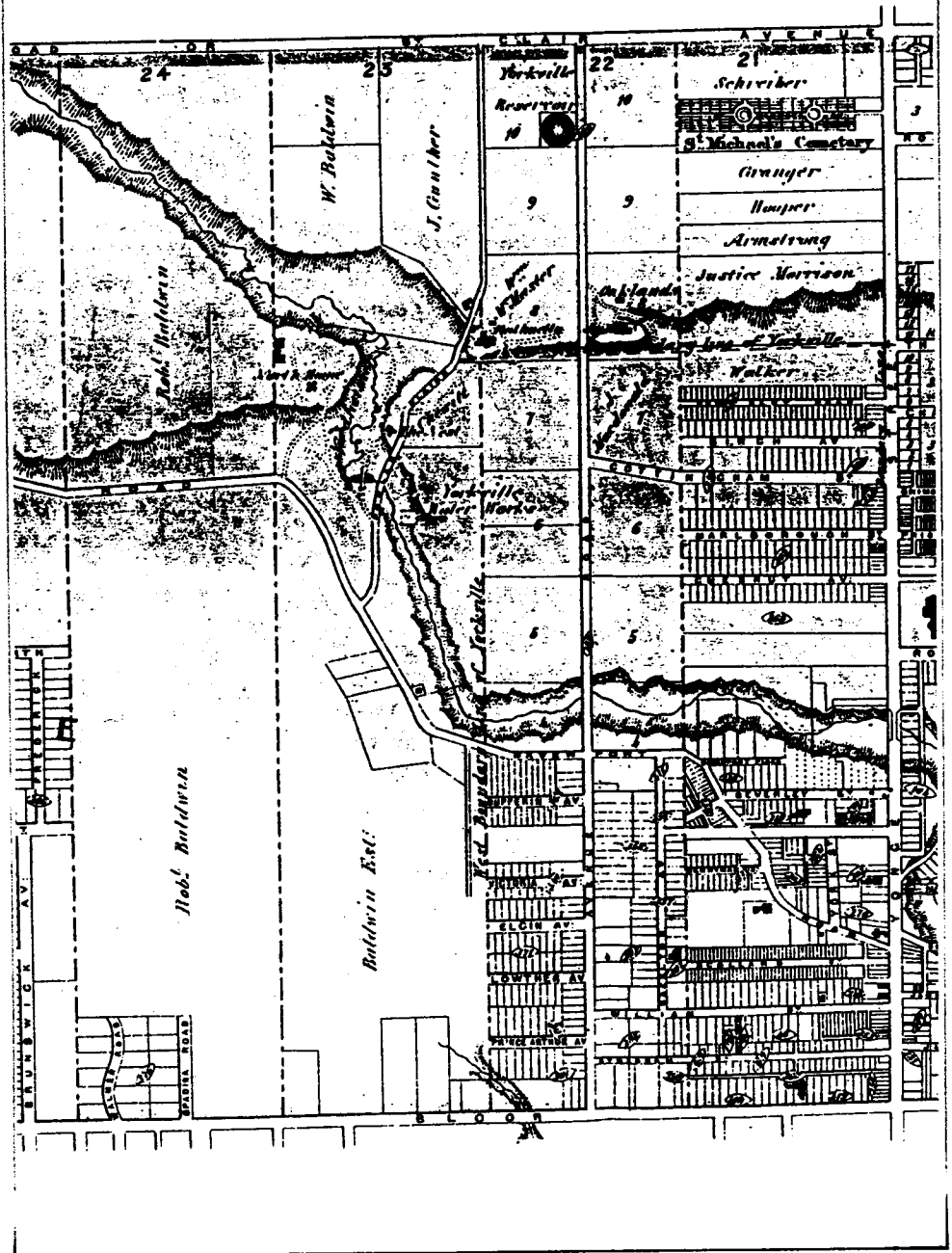
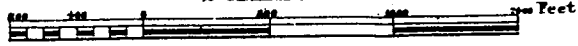
**1878  
MAP OF  
YORKVILLE AND  
ITS VICINITY.  
(MTPL)**

# YORKVILLE

AND ITS VICINITY.

By Alfred T. Cotterell C.E. Toronto.

SCALE.

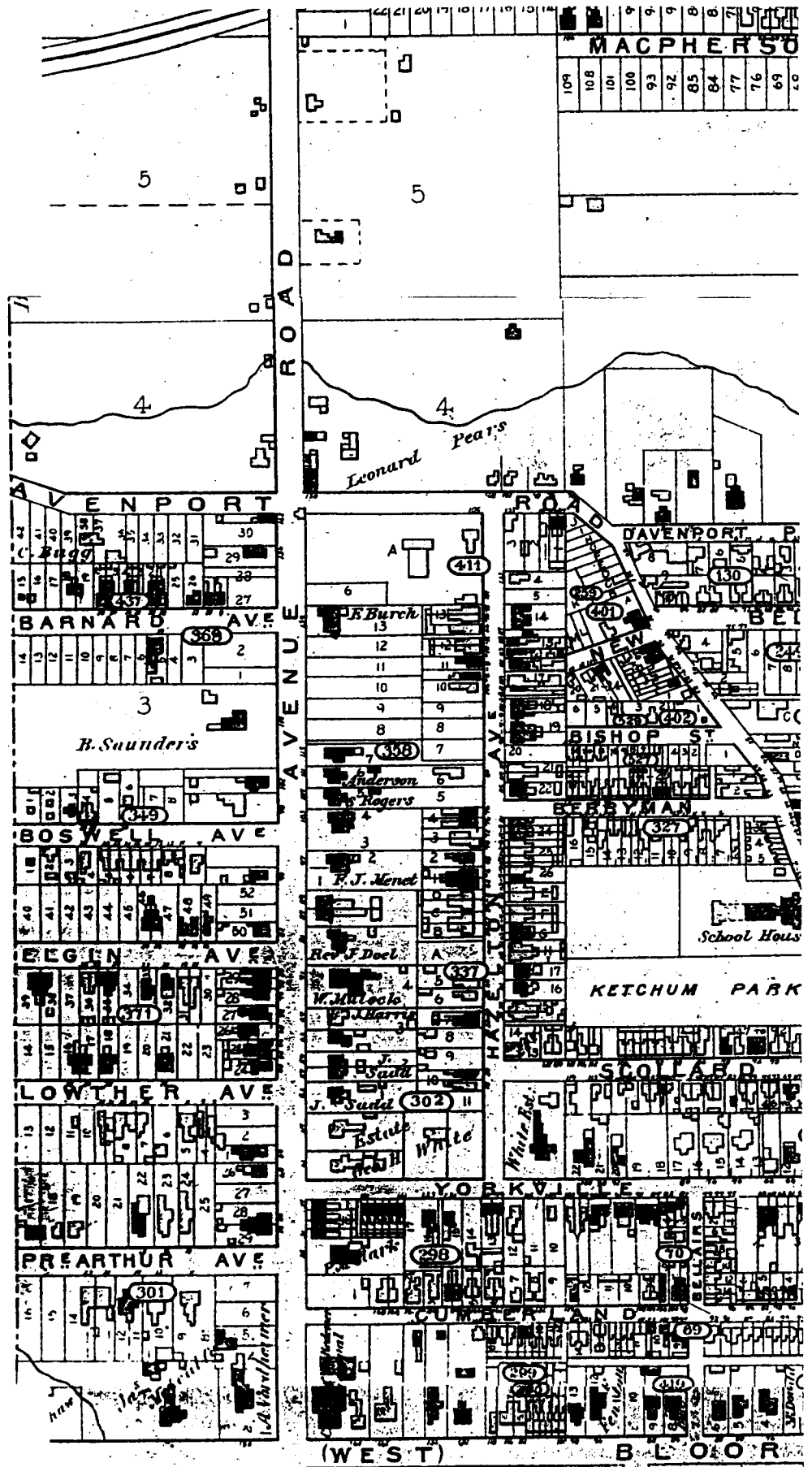


*This map of Yorkville shows the subdivision of most of the East Annex streets except Tranby Avenue. Note that they end at the west boundary of Yorkville, and that the Annex area is still the Baldwin estates. The house at 50 Lowther Avenue is a house dating from this pre-annexation period.*



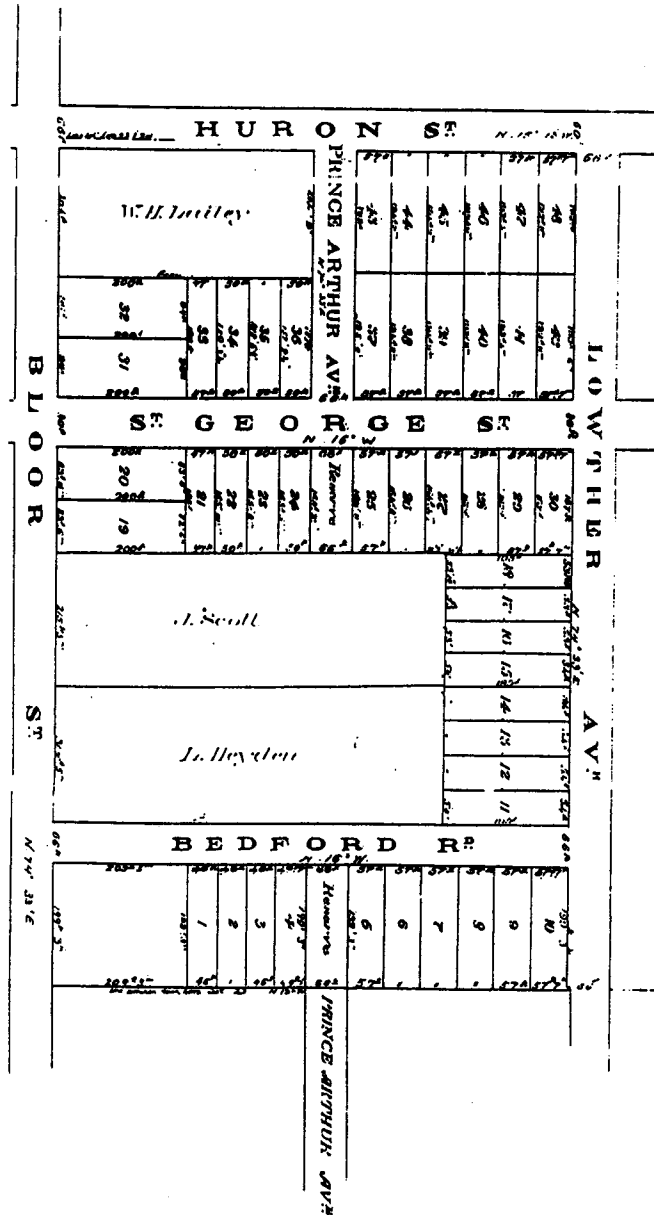


**1884**  
**Plate 31 (MTPL)**  
**Goad's Atlas City of**  
**Toronto**



*This fire insurance plan shows the level of construction in the area in 1884. The dark buildings are masonry or brick veneer, the lighter buildings are wood frame with stucco or clapboard sidings. Note the large estates such as the Metcalfe or Nordheimer estates on Bloor or the Saunder's property on Avenue Road.*

**SUBDIVISION  
PLAN  
BETWEEN  
LOWTHER AND  
BLOOR, HURON  
AND BEDFORD**



Scale 100ft = 1 inch

**PLAN**  
of subdivision of Southern part of  
**LOT NO. 23 CON 2 FROM BAY**  
in the  
**TOWNSHIP OF YORK**

578

578

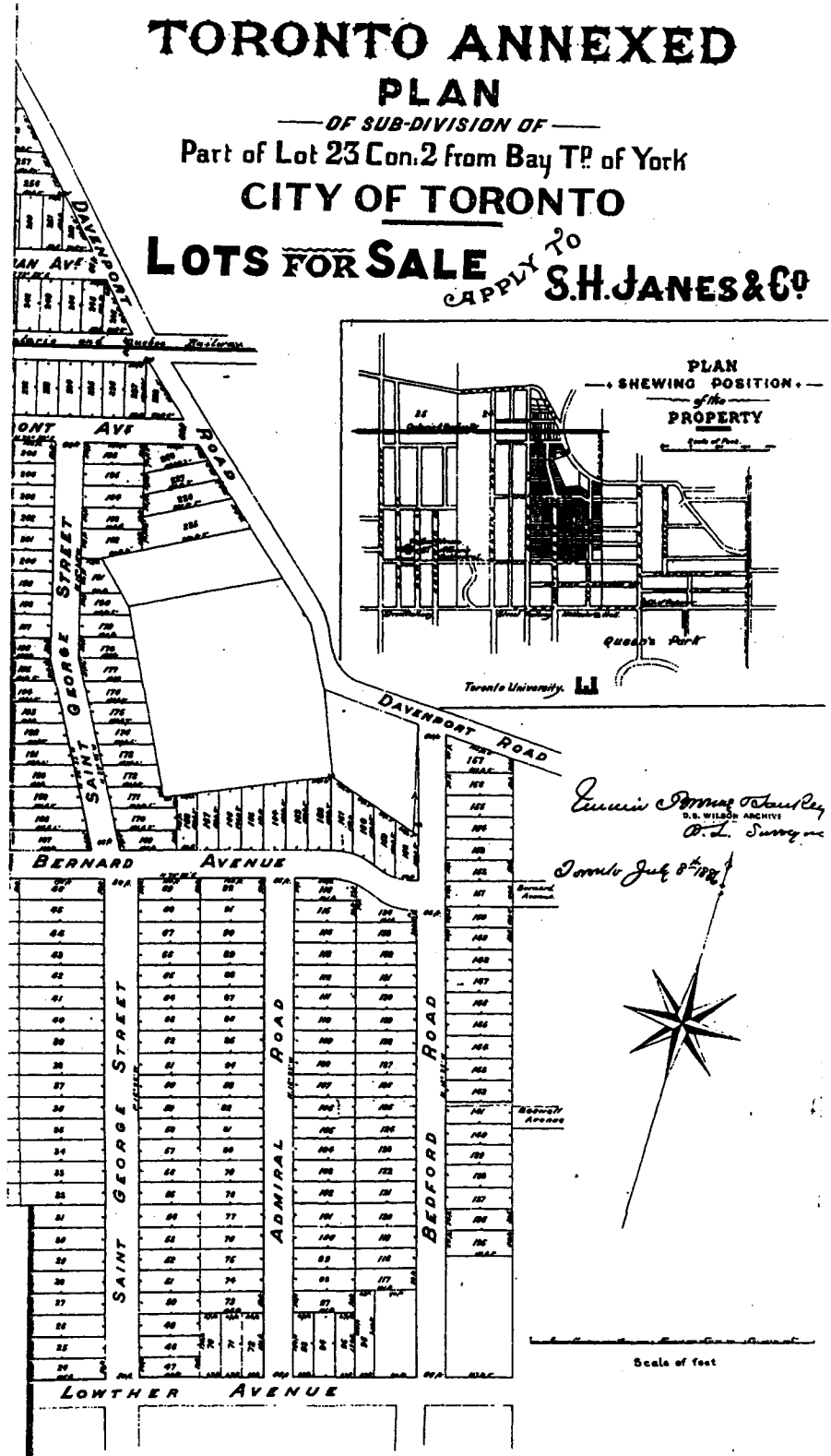
This is an early subdivision plan for a section of the Annex at Bedford. Note that a lot is reserved for the possible extension of the existing road, Prince Arthur Avenue, west to Bedford, and that Lowther has been extended as far as Huron.

1886  
 TORONTO  
 ANNEXED  
 PLAN OF  
 SUBDIVISION  
 (MTPL)

# TORONTO ANNEXED PLAN

— OF SUB-DIVISION OF —  
 Part of Lot 23 Con. 2 from Bay T<sup>p</sup>. of York  
 CITY OF TORONTO

**LOTS FOR SALE** <sup>APPLY TO</sup> **S.H. JANES & CO.**



*James Thomas Sharkey*  
 D. S. WILSON ARCHIVE  
*O. L. Sunny*  
 Toronto July 8<sup>th</sup> 1886

*This is one of Janes' advertisements for the Annex. Note that only Lowther, Boswell and Bernard are shown as potentially extending through to Bedford.*

**1886  
SUBDIVISION  
PLAN  
CORNER OF  
BERNARD AVE.  
AND AVENUE  
ROAD**

*Plan of Subdivision of*  
**LOTS N<sup>OS</sup> 21, 22, 23, 24 AND 25**

**639**

**OF REGISTERED PLAN 563**

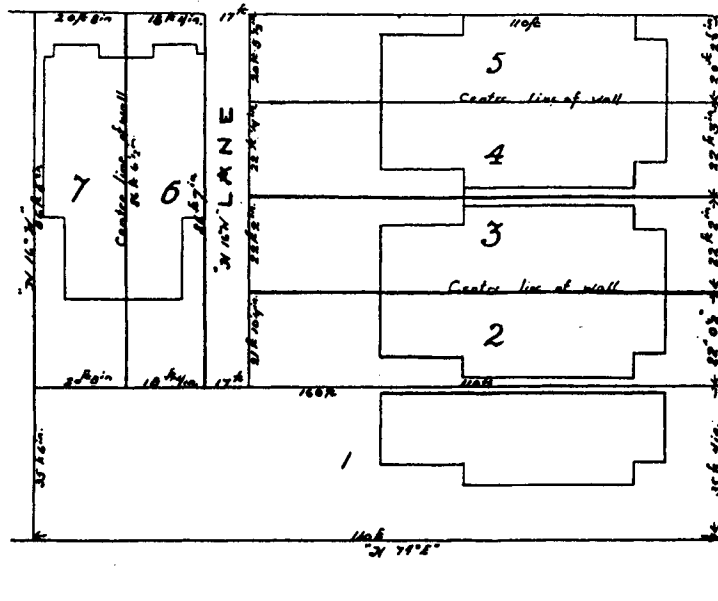
**TORONTO**

*SCALE 200' OF 1" = 10'*



*NOTE: Blue Lines and figures refer to Reg. Plan 563*

**BERNARD "N 77° E" AVENUE**



**AVENUE "N 76° W" ROAD**

*The Lots colored Pink and the  
Lane colored yellow shown on this  
plan are laid out according to  
my instructions*

*This plan was filed in the Registry  
Office for the City of Toronto on the  
17 day of January 1887 as N. 639*

*H. J. Fairbairn  
Deputy*

*H. J. Fairbairn  
Owner*

*This plan is correct and is prepared  
under the provisions of the Registry Act  
J. H. Lundy  
P. H. Lundy*

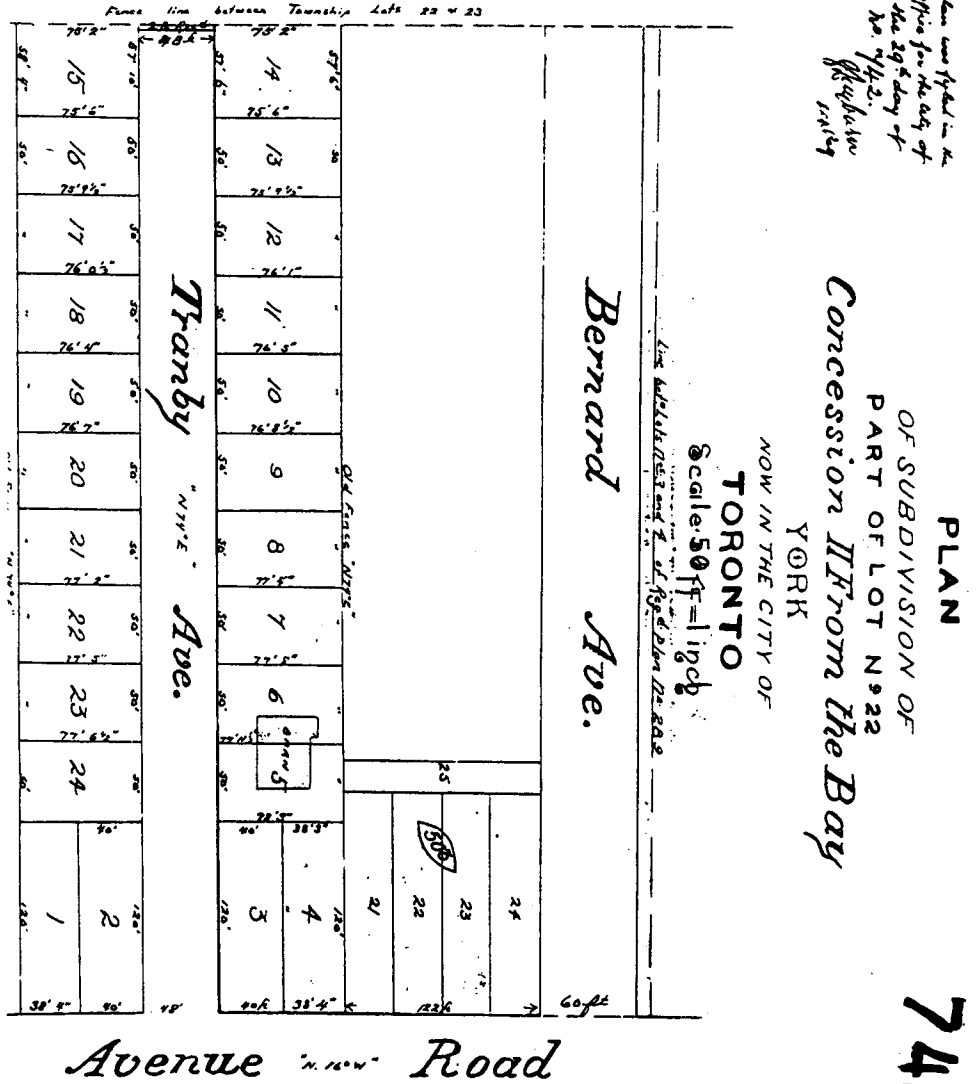
*Toronto  
24<sup>th</sup> December 1886*

*This is a plan of  
subdivision of lands at  
the corner of Avenue  
Road and Bernard  
Avenue. It illustrates  
the typical speculative  
development which  
occurred in the area.*

**639**

**1887  
SUBDIVISION  
PLAN  
TRANBY AVE.**

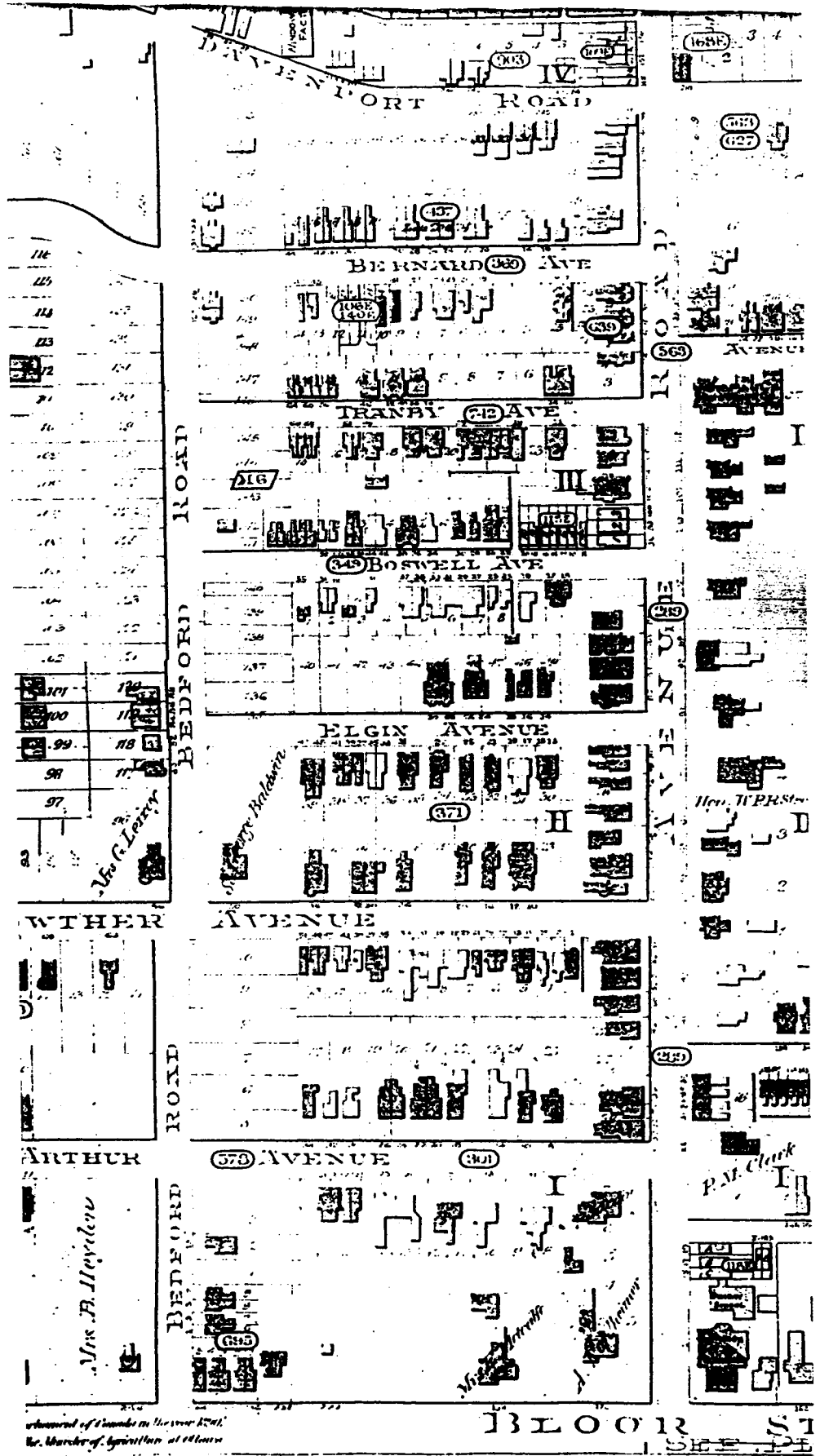
*This plan was filed in the  
Registry office for the city of  
Toronto on the 29th day of  
October 1887 No. 1412.  
W. H. Saunders  
Registrar*



*This plan of subdivision shows the creation of Tranby Avenue. Note the Saunder's barn still in location and the 50 foot wide lots which were later subdivided.*



1899  
 Goad's Atlas, City  
 of Toronto  
 Plate 33



This fire insurance plan shows the extension of the avenues through to Bedford. The property at Lowther and Bedford is labelled 'St. George Baldwin', but only small portions of Bedford are developed.

Approved of Council on the 17th Dec 1898  
 Wm. Marchant, City Engineer



**1905  
SUBDIVISION  
PLAN  
9-19 BERNARD AVE**

*Plan of Subdivision of  
LOTS 3, 4, 5 AND PARTS OF LOTS 1 AND 2*

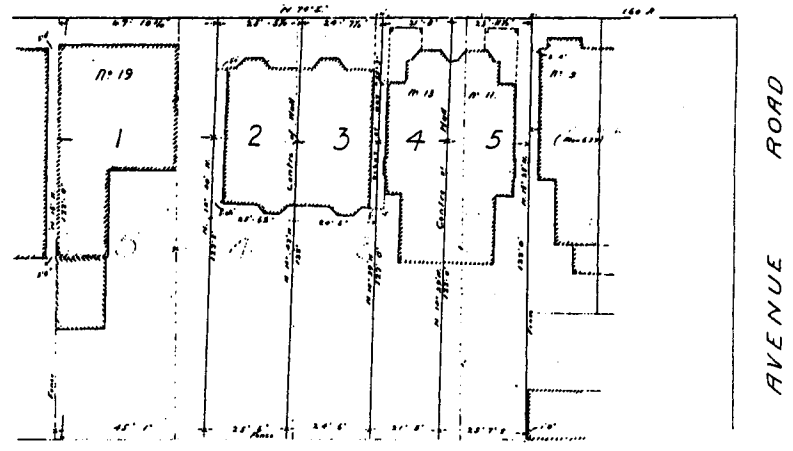
REG<sup>d</sup> PLAN NO 369 (YORKVILLE)  
TORONTO.

SCALE: 20 FT = 1 INCH.

No. 278 E  
THIS PLAN WAS FILED IN THE  
REGISTRY OFFICE FOR THE EAST-  
ERN DIVISION OF THE CITY OF  
TORONTO AT 11.30 O'CLOCK A.M.  
OF THE 14<sup>th</sup> DAY OF  
DECEMBER 1905  
William Bennett  
DEP. REGISTRAR

28  
Star lines and figures show Reg<sup>d</sup> Plan 369  
Bearings are calculated from the assumed  
N.W. of the west Limit of Lot 5 Plan 369.

BERNARD (Formerly Dufferin) AVENUE.



**- OWNERS' CERTIFICATE -**

The Lots numbers 2, 3, 4 and 5 colored Pink and Yellow hereon are laid out in accordance with my instructions, the portions colored Yellow showing right of way common to the owners of the Lots on and adjacent to which such portions colored Yellow are situated.

Marion Murphy

Witness:  
G. S. Middleton

County of York } I Edward Lewis Mackenzie of the City of Toronto in the County of York Solicitor  
To wit: } make oath and say:  
1. That I was personally present and did see this plan duly signed at Toronto  
by Marion Murphy and Thomas M. Coustang  
2. That I know the said parties  
3. That I am a subscribing witness to the said signing.

Given before me  
at Toronto this 15<sup>th</sup> day of December 1905

G. S. Middleton  
A Commissioner

(Thomas M. Coustang as Mortgagee,  
hereto consent to this plan being filed

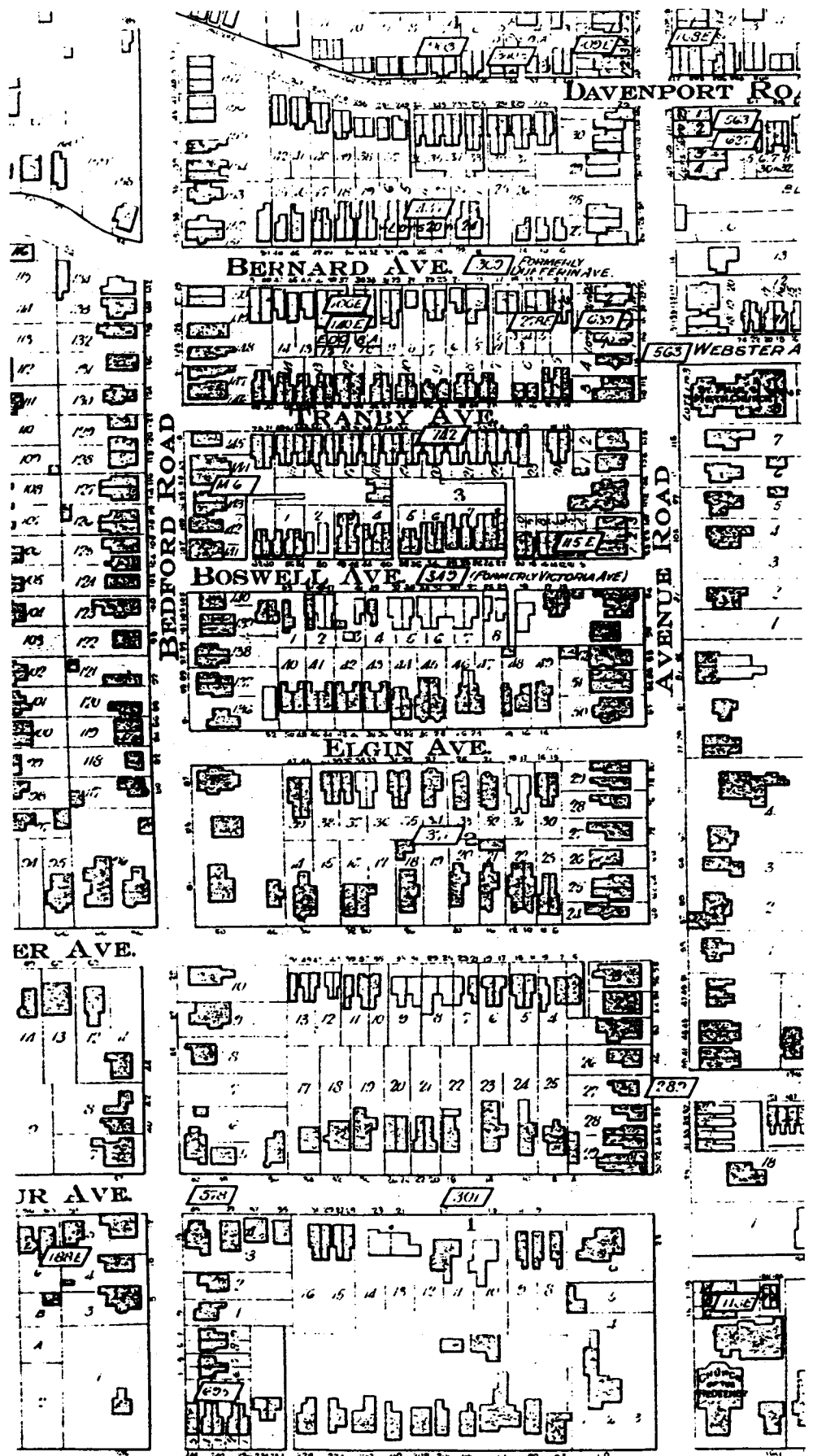
Witness:  
G. S. Middleton  
Mortgagee

**SURVEYOR'S CERTIFICATE**  
We hereby certify that this plan and the lot lines thereon were laid out in accordance with the instructions of the Registrar and that the same are in accordance with the provisions of the Act in that behalf made.

Witness:  
J. S. [Signature]  
Surveyor

This plan of subdivision shows the gradual development of houses on Bernard, with the lot widths being adjusted to suit the particular circumstances of the development.

1910  
 Goad's Atlas, City of  
 Toronto  
 3rd ED.  
 Plate 33 (MTPL)



*This fire insurance plan shows that the majority of the buildings within the study area were constructed by 1910. Note areas where demolition has occurred, on Davenport, on Avenue Road and in sections of Bedford south of Lowther.*