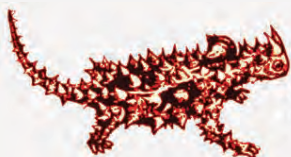



A bequest to the arid lands
For the desert, for generations



**Arid
Lands
Environment
Centre**



Protecting the environment is an
intergenerational responsibility. We must
speak up for nature today, in order to
protect it for tomorrow.

Leave a desert legacy

Seas of spinifex and acacia shrubs, silky grey-blue bilbies that renovate their burrows at night, magnificent wedge-tailed eagles that soar through the sky. Australia's deserts are full of life spectacularly evolved.

When you leave a gift to the Arid Lands Environment Centre in your Will, you are helping to preserve the most ecologically intact arid landscapes on Earth.

Protecting pristine desert country is a legacy that will be felt for generations to come. It is your opportunity to show appreciation for and give back to the Central Australian places that are special to you.

We recognise that Traditional Owners have looked after the desert country for a thousand generations, developing cultural practices that maintain biodiversity and keep their Country healthy.

Irranjarra (Running Waters), about 200k's south west of Alice Springs is one of few permanent waterholes. It is rich with colour and textures, a haven for plants, fish, birds and animals.



Protecting Country, water, life

You can help shape the future of the arid lands – a future where healthy rivers and groundwater systems and natural landscapes sustain thriving desert communities.

A gift in your Will, no matter the amount, can make a real difference to the health of the desert country.

The gift you leave could support work that leads to desert communities being safer from climate change. It may fund action that blocks polluting industries from building new gas fields. It could mean the difference between strong and effective laws for nature, or the clearing of precious habitat.

Your will reflects what is important to you. Naturally you'll want to look after your loved ones first. A gift to ALEC will also help protect nature and ensure future generations can enjoy the rivers, mountains, plants and wildlife that you have.

Protecting Special Places. life member Allan O'Keefe starring in Protecting the Outback promotional film by Central Australian filmmaker David Nixon.

A wide-angle photograph of a person wearing a hat and dark clothing walking away from the camera on a dirt path. The path is surrounded by dry, yellowish-brown grass and shrubs. In the background, there are rolling hills and a clear blue sky with scattered white clouds. The overall scene is a natural, arid landscape.

PROTECTING SPECIAL PLACES



Students and adults in Alice Springs spoke up for the climate at the Global Climate Strike in September 2019. Photo: Christabelle Baranay

The actions we take today shape the future. Leaving a gift in your Will to ALEC will help prevent irreversible damage of the desert, protect our groundwater systems and the life that depends on it.



Planting seedlings at a working bee at the Alice Springs Community Garden



'Back off the Beetaloo': Alice Springs protesters attend a highway action to denounced gas policies with ALEC and other local action groups

Defending the desert for 40 years

For 40 years, the Arid Lands Environment Centre (ALEC) has been standing up for our water, land and communities. We have grown from a small organisation to one with big impact.

Standing alongside Traditional Owners we have protected our community against invasive proposals like nuclear waste dumps and uranium mines and continue to monitor new projects and government policy.

Despite persistent attempts by polluting industries to drill through the water table and turn precious Country into industrialised gas fields, only a small number of wells have been fracked in the past nine years.

We've turned climate change and renewables into consistent election issues in the Northern Territory, put fracking on the national agenda and built a beacon of sustainability from the ground up through the Alice Springs Community Garden.

We've played a key role in bringing innovative initiatives like Alice Solar City and Alice Water Smart to the community, and helped to initiate the 10 Deserts Project - the largest Indigenous led conservation project on Earth.

We understand the importance of knowledge, science, research and education to effectively engage the community on the issues that matter.



The removal of buffel grass is an important part of protecting the majestic gums on the Lhere Mparntwe (Todd River)

The Arid Lands Environment Centre was founded in 1980 by a group of scientists, activists, land rights lawyers and conservationists. They came together because unchecked uranium mining, the dumping of hazardous waste and a lack of national parks and protected areas were posing major threats to the Northern Territory.

40 years on, ALEC continues to advocate for the protection of nature and growing sustainable communities in the arid lands.

It's our loyal donors, combined with bequestors like you, that mean ALEC will be here for the next 40 years as a strong and trusted voice for the Outback.

**Our vision is
healthy futures
for arid lands
and people.**

A voice for the arid lands

ALEC is Central Australia's peak environmental organisation - the only organisation of its kind with a focus the arid heart of Australia.

Your legacy will live on through work on a wide range of issues including climate change, renewable energy, sustainability, biodiversity conservation, food and water security, fracking, mining, pastoralism and urban development. Through your gift, you will support partnerships across the Northern Territory, South Australia and Western Australia for greater impact.



A future for the desert

Loss of habitat, introduced weeds, increased mining of our groundwater and climate change are all serious threats affecting life and desert landscapes. ALEC advocates, campaigns, educates and drives innovation toward sustainable desert futures for all life that lives here.

A safe climate for the arid lands

We are building the transition to 100% clean energy in the Northern Territory and working to end dangerous fossil fuel projects. We work with the community and empower people to take urgent action on climate change.

Protecting nature

Policy advocacy and advocating for the rights of the land, plants and animals of Central Australia is some of ALEC's most important and effective work. The wise-use of the region's natural resources is a priority, with the importance of groundwater and the health of country in regards to climate change being of highest concern.

Sustainable and resilient communities

From the ground up, ALEC makes an impact across the region through developing and supporting projects in the areas of energy, water, waste, transport, food and the built environment. ALEC actively works to influence policy by engaging all tiers of government on sustainable development and building local resilience.

Support and empowerment of Traditional Owners

Aboriginal people are central to the sustainability of the arid lands. ALEC works with Traditional Owners, Indigenous rangers and local communities to support land management and community resilience across the desert region.

On the way to Well 6 along the Canning Stock Route, WA as part of the Southern Desert Ranger Forum. Credit: Jimmy Cocking



Your Will is important

Your Will provides for the future of your family and loved ones. It also allows you to support the causes that have been important to you in your lifetime.

Leaving a bequest is not just a thing for wealthy people to consider. You can specify any amount or percentage of your estate that you feel comfortable giving to ALEC.

It is important to review your will regularly to make sure it is still valid so that your wishes can be fulfilled. If you have already written your will, it can be reviewed and rewritten to include your charitable gift to ALEC.

A gift in your Will, no matter the amount, will make a real difference to the future of the arid lands.



Credit: Karlee Foster

Your choice

Your bequest will make a lasting difference.

You can choose how you wish to leave your gift, including:

A percentage or nominated portion

Some people decide to share their estate among a number of people and charities by allocating a percentage to beneficiaries. This overcomes the need to review your will regularly to take account of changes in your estate or to compensate for inflation. Even a small percentage of your estate can make a significant difference.

Cash sum

You can leave a specific cash sum of your choosing to ALEC. Any amount, regardless of its size is integral to funding the work that we do.

A residual bequest

After making provision for family and friends you can choose to leave the remainder (the residue) to a charity such as ALEC: The value of the residual gift is determined after loved ones have been provided for and all expenses have been paid.

Trust

Establishing a trust in your will allows a spouse or other nominated person to use your property and to receive income derived from your estate during their lifetime, after which time the property can pass to ALEC.

Specific gift or asset

You can leave a specific asset such as property or shares to ALEC. Gifts of shares and other property do not attract GST for ALEC or the estate. ALEC can also be the beneficiary of a life insurance policy or superannuation fund.



Bilby populations across the desert are declining rapidly. Ongoing vital conservation work is needed to ensure bilbies to survive and thrive.



Suggested wording

Our suggested wording for a will is:

"I give the rest and residue...

OR

"I give [insert description of specific gift]...

OR

"I give [insert percentage] %...

...of my estate free from all debts (secured and unsecured) and all duties and taxes (whether federal or state) payable in respect of my estate to the (ALEC) for its general purposes, and I declare that the receipt of an authorised officer of the said ALEC shall be a full and sufficient discharge of this bequest."



Top: An adult red kangaroo stands on the red sand of the Outback. Left: The permanent waterhole of Ormiston Gorge.

"Desert biodiversity shining bright for all to see."
Credit: Aliesha Dodson

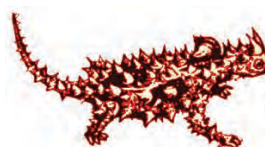
To speak with us personally about leaving a bequest, please call us on 08 89522497.

If you have a made a bequest to ALEC, please let us know so that we can thank you and add you to our growing list of bequest supporters. Call 08 89522497 or email director@alec.org.au



Healthy futures for arid lands and people

90 Gap Road, Alice Springs NT
PO Box 2796, 0871 NT
p: 08 89522497
e: info@alec.org.au
facebook.com/aridlandsec
www.alec.org.au



**Arid
Lands
Environment
Centre**