

# Factsheet 3

## Youth Smoking in New Zealand by Gender



### Factsheet 3:

### Youth Smoking in New Zealand by Gender

This factsheet describes daily, regular and never smoking rates for 14-15 year old New Zealand boys and girls in 2012 and shows trends over time in daily smoking from 1999 to 2012 for each gender.

The ASH Year 10 Snapshot Survey has been used to monitor student smoking since 1999. This annual survey samples around half of the schools in New Zealand with Year 10 students. Results are reported for students who were 14 or 15 at the time of the survey. The results reported here are estimates for the whole population based on the Year 10 sample.

This is the largest survey of youth smoking in New Zealand and samples around half of all Year 10 students.

Up until 2010 the survey normally took place in term 3. Since 2011 the fieldwork has changed to term 2.

#### Methodology

To measure if students had ever tried smoking, they were asked: *Have you **ever** smoked a cigarette, even just a few puffs?* They can answer either 'yes' or 'no'.

To measure smoking frequency, students were asked: *How often do you smoke **now**?*

Options for response include: 'I have never smoked/ I am not a smoker now', 'At least once a day', 'At least once a week', 'At least once a month' or 'Less often than once a month'.

*Regular smokers* are those students who report that they smoke daily, weekly or monthly.

The number of responses by gender was; Boys: 13,711 (48% of respondents) and Girls: 14,732 (52% of respondents).

Detailed methodology can be found in the *methodology* factsheet.

#### Key findings

3.8% of Year 10 boys and 4.3% of girls were *daily smokers*.

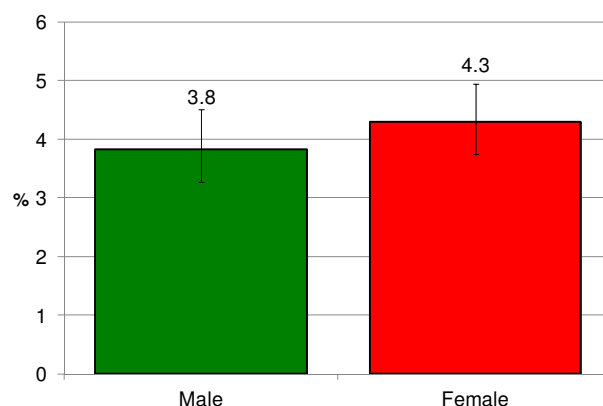
6.8 % of boys and 8.5% of girls were *regular smokers*.

69.5% of boys and 70.7% of girls were *never smokers*.

The gap in *daily smoking* rates between boys and girls continued to close.

#### Daily smokers

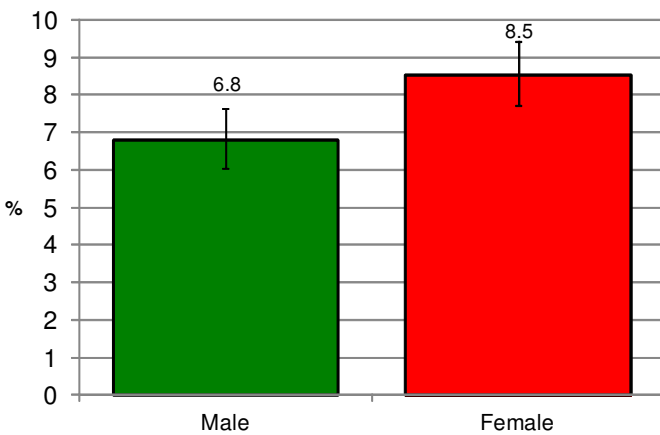
Figure 1: Percentage of Year 10 Students who were daily smokers by gender, 2012



## Regular smokers

*Regular smokers* are students who report that they smoke daily, weekly or monthly.

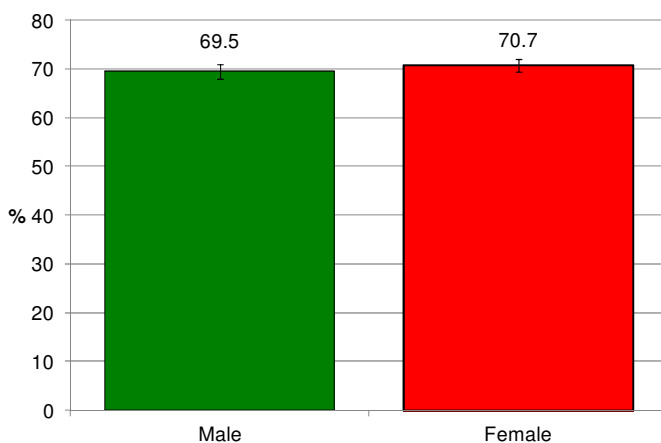
Figure 2: Percentage of Year 10 students who were regular smokers by gender, 2012



## Never smokers

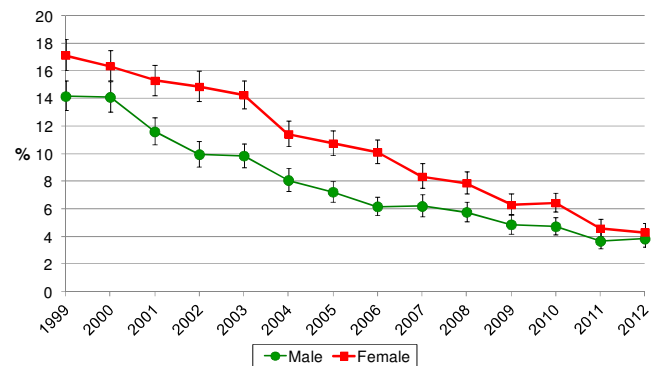
*Never smokers* are students who have answered 'no' when asked if they have ever smoked, even a puff.

Figure 3: Percentage of Year 10 Students who were never smokers by gender, 2012



## Smoking trends

Figure 4: Percentage of Year 10 students who were daily smokers by gender, 1999-2012



## Discussion points

The gap in *daily smoking* rates for Year 10 boys and girls has closed significantly over the last decade.

## Further information

Detailed information on the survey and further results from the 2012 and previous ASH Year 10 surveys can be found at [www.ash.org.nz](http://www.ash.org.nz)



## Supplementary tables

Supplementary Table 1: Smoking Status for all boys 1999-2012

Smoking Status: Boys	1999	2000	2001	2002	2003	2004	2005	2006	2007	2008	2009	2010	2011	2012
Daily	14.2	14.1	11.6	9.9	9.8	8.1	7.2	6.2	6.2	5.8	4.9	4.7	3.7	3.8
Weekly	5.2	5.0	4.6	3.6	3.2	2.8	2.7	2.5	2.5	2.0	2.2	2.2	1.6	1.4
Monthly	5.4	5.3	4.8	3.8	3.4	2.9	3.0	2.1	1.9	2.0	2.0	1.8	1.7	1.6
Regular	24.8	24.4	21.0	17.4	16.4	13.8	12.9	10.8	10.6	9.7	9.1	8.7	7.0	6.8
Experimented	28.0	27.8	26.6	30.6	28.7	30.0	28.1	26.5	25.1	22.3	20.1	20.7	17.2	18.6
Never Smoked	33.3	34.7	37.7	41.1	45.9	49.8	52.5	57.3	58.9	63.2	66.3	65.3	71.4	69.5
Total (n)	14393	14496	14340	14333	16245	15460	15657	16289	12467	15133	12169	17119	12741	13711

Supplementary Table 2: Smoking Status for all girls, 1999-2012

Smoking Status: Girls	1999	2000	2001	2002	2003	2004	2005	2006	2007	2008	2009	2010	2011	2012
Daily	17.1	16.3	15.3	14.9	14.2	11.4	10.7	10.1	8.3	7.9	6.3	6.4	4.6	4.3
Weekly	8.1	7.6	6.7	5.8	5.5	5.2	4.5	4.1	3.5	3.1	3.1	2.6	2.3	2.1
Monthly	7.2	7.5	6.5	6.0	5.2	4.7	5.2	3.5	3.0	3.0	3.1	2.3	2.4	2.1
Regular	32.4	31.4	28.5	26.6	24.9	21.3	20.4	17.7	14.9	14.0	12.5	11.4	9.3	8.5
Experimented	23.1	23.3	22.6	26.2	24.9	25.6	24.3	24.6	23.0	21.7	19.7	19.5	16.2	16.0
Never Smoked	29.9	31.4	34.2	35.7	39.0	44.2	46.5	50.7	55.8	58.3	61.9	63.3	69.6	70.7
Total (n)	14503	14702	14869	14849	16460	16169	16907	16538	13511	15739	13590	15486	13904	14732