

Factsheet: Youth Smoking in New Zealand by Socio-economic Status

This factsheet describes daily, regular and never smoking rates for Year 10 Students by socio-economic status (SES) and for boys and girls by SES.

The ASH Year 10 Snapshot Survey has been used to monitor student smoking since 1999. This annual survey samples around half of the schools in New Zealand with Year 10 students. Results are reported for students who were 14 or 15 at the time of the survey. The results reported here are estimates for the whole population based on the Year 10 sample. This is the largest survey of youth smoking in New Zealand.

Up until 2010 the survey normally took place in term 3. Since 2011 the fieldwork has changed to term 2.

Methodology

To measure if they had ever tried smoking, students were asked: *Have you **ever** smoked a cigarette, even just a few puffs?* They can answer either 'yes' or 'no'.

To measure smoking frequency, students were asked: *How often do you smoke **now**?*

Options for response include: 'I have never smoked/ I am not a smoker now', 'At least once a day', 'At least once a week', 'At least once a month' or 'less often than once a month'.

Regular smokers are those students who report that they smoke daily, weekly or monthly.

The socio-economic status of students is determined by the decile of their school. Schools are grouped in to three different decile ratings. Low SES are decile 1-3 schools, medium are decile 4-7 and high are decile 8-10. School decile is published by the Ministry of Education.

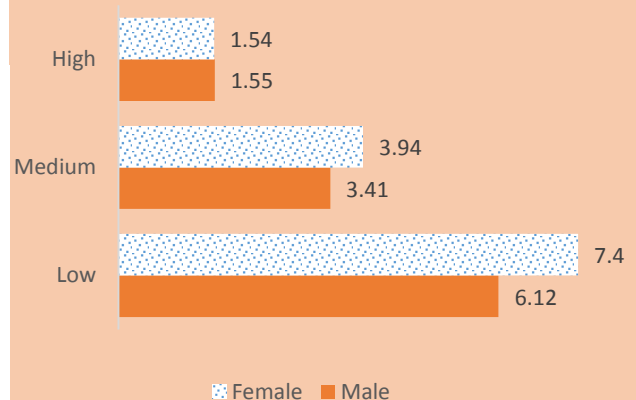
The number of responses by decile group was: low 4,630; medium 11,726; and high 12,087.

Key findings

- 6.77% of students from low decile, 3.7% from medium decile schools and 1.55% from high decile schools were *daily smokers* in 2013.
- 11.19% of students from low decile, 7.59% from medium decile and 4.57% from high decile schools were *regular smokers*.
- 9.42% of boys and 12.87% of girls from low decile schools were *regular smokers*.
- 4.15% of boys and 5.05% of girls from high decile schools were *regular smokers*.
- 61.07% of students from low decile, 72.21% from medium decile and 82.41% from high decile schools were *never smokers*.

Daily Smokers

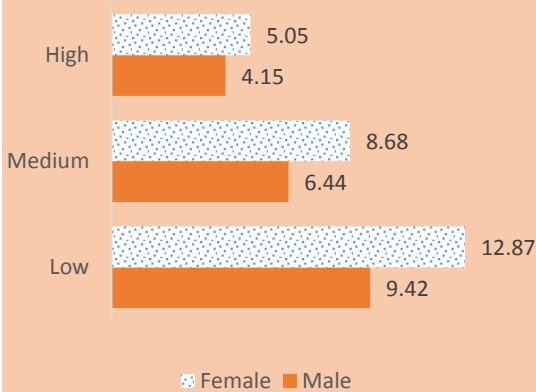
Figure 1: Percentage of Year 10 students who were daily smokers by SES and gender, 2013



Regular smokers

Regular smokers are students who report that they smoke daily, weekly or monthly.

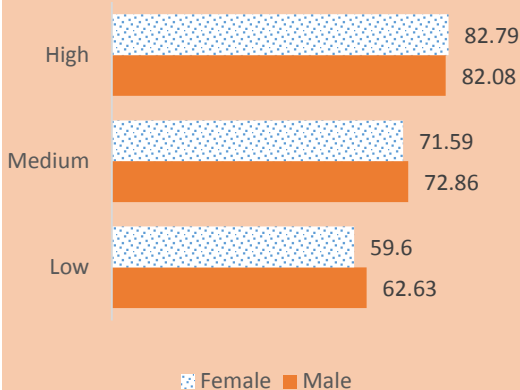
Figure 2: Percentage of Year 10 students who were regular smokers by SES and gender, 2013



Never smokers

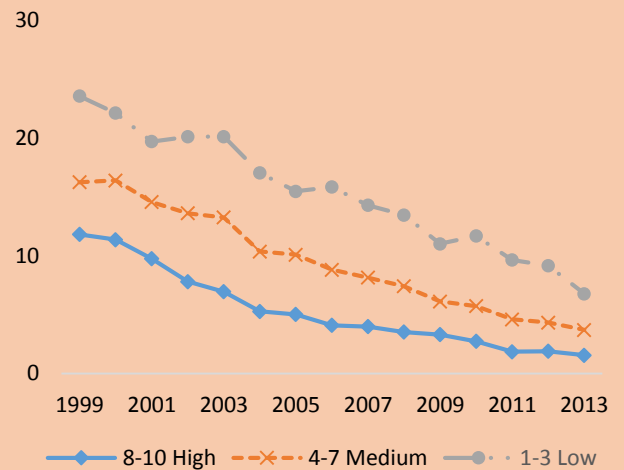
Never smokers are students who report that they have never tried a cigarette, even just one puff.

Figure 3: Percentage of Year 10 students who were never smokers by SES and gender, 2013



Smoking trends 1999-2013

Figure 4: Percentage of Year 10 students who were daily smokers by SES, 1999-2013



Discussion points

Students from low decile schools were more than three times as likely to be *daily smokers* than those from medium decile schools and nearly five times more likely to be *daily smokers* than those from high decile schools.

Girls from low decile schools have the highest *daily* and *regular* smoking rates. They were five times more likely to smoke daily than boys and girls from high decile schools.

The gaps between male and female smoking rates in the same SES continued to close.

Further information

Detailed information on the survey and further results from the 2013 and previous ASH Year 10 Surveys can be found at www.ash.org.nz

Supplementary tables

Supplementary Table 1: Percentage of Year 10 Students who were Daily Smokers by SES and Gender 1999-2013

Daily Smoking %	1999	2000	2001	2002	2003	2004	2005	2006	2007	2008	2009	2010	2011	2012	2013
1-3 Low	23.53	22.09	19.68	20.08	20.1	17.02	15.45	15.82	14.27	13.44	11	11.67	9.63	9.16	6.77
4-7 Med	16.23	16.38	14.55	13.59	13.24	10.35	10.08	8.81	8.14	7.4	6.11	5.72	4.59	4.32	3.7
8-10 High	11.8	11.36	9.74	7.8	6.94	5.27	5.02	4.09	3.99	3.52	3.31	2.74	1.86	1.89	1.55
Daily Smoking Boys %	1999	2000	2001	2002	2003	2004	2005	2006	2007	2008	2009	2010	2011	2012	2013
1-3 Low	20.43	19.12	16.07	15.28	15.8	13.46	11.71	11.77	11.51	10.87	9.34	9.76	8.36	8.37	6.12
4-7 Med	14.72	15.1	12.36	10.77	10.81	8.56	7.95	6.7	6.93	6.4	5.37	4.98	4.02	4.06	3.41
8-10 High	11.13	10.97	8.78	6.55	5.97	4.66	4.21	3.36	3.61	3.26	3.12	2.56	1.81	1.94	1.55
Daily Smoking Girls %	1999	2000	2001	2002	2003	2004	2005	2006	2007	2008	2009	2010	2011	2012	2013
1-3 Low	26.54	25.17	23.66	25.29	24.45	20.38	19.42	19.76	16.92	15.65	12.32	13.54	10.77	9.89	7.4
4-7 Med	17.66	17.65	16.55	16.19	15.56	12.04	12.04	10.72	9.18	8.3	6.72	6.49	5.08	4.54	3.97
8-10 High	12.52	11.74	10.67	9.02	7.92	5.85	5.75	4.91	4.35	3.8	3.51	2.97	1.91	1.85	1.54

Supplementary Table 2: Percentage of Year 10 Students who were Regular Smokers by SES and Gender 1999-2013

Regular Smoking %	1999	2000	2001	2002	2003	2004	2005	2006	2007	2008	2009	2010	2011	2012	2013
1-3 Low	33.05	31.86	28.85	28.18	28.03	25.43	23.59	22.65	21.49	18.9	17.59	17.16	16.25	14.1	11.19
4-7 Med	29.39	29.17	26	23.89	22.12	18.33	18.51	15.54	13.65	12.99	11.9	10.53	9.18	8.14	7.59
8-10 High	25.9	25.05	21.9	17.35	15.54	12.57	11.74	8.95	8.94	7.86	7.63	6.36	4.53	4.77	4.57
Regular Smoking Boys %	1999	2000	2001	2002	2003	2004	2005	2006	2007	2008	2009	2010	2011	2012	2013
1-3 Low	27.85	26.7	23.7	21.63	21.82	19.45	17.69	17.06	17.3	14.9	14.51	14.79	13.8	12.14	9.42
4-7 Med	25.38	25.42	21.78	18.71	17.46	14.28	14.07	11.74	11.23	10.73	9.94	9.31	7.73	7.13	6.44
8-10 High	22.87	22.31	19.01	13.95	12.6	10.17	9.12	7.1	7.69	6.82	6.72	5.89	4.13	4.47	4.15
Regular Smoking Girls %	1999	2000	2001	2002	2003	2004	2005	2006	2007	2008	2009	2010	2011	2012	2013
1-3 Low	38.11	37.2	34.53	35.3	34.3	31.08	29.86	28.09	25.52	22.32	20.03	19.5	18.44	15.91	12.87
4-7 Med	33.17	32.91	29.87	28.69	26.58	22.18	22.58	18.97	15.75	15.03	13.49	11.81	10.44	9.04	8.68
8-10 High	29.11	27.66	24.66	20.63	18.51	14.91	14.07	11.03	10.16	8.99	8.58	6.93	4.91	5.07	5.05

Supplementary Table 3: Percentage of Year 10 Students who were Never Smokers by SES and Gender 1999-2013

Never Smoking %	1999	2000	2001	2002	2003	2004	2005	2006	2007	2008	2009	2010	2011	2012	2013
1-3 Low	27.45	27.39	32.74	32.19	34.01	38.08	38.88	39.75	44.39	45.75	48.72	48.81	53.21	52.4	61.07
4-7 Med	29.93	31.17	33.41	36.22	39.55	44.17	45.77	51.49	55.12	58.21	60.83	62.31	66.94	67.38	72.21
8-10 High	35.2	37.28	39.7	43.55	49.81	55	58.53	63.31	64.09	69.55	72.33	73.19	79.64	79.54	82.41
Never Smoking Boys %	1999	2000	2001	2002	2003	2004	2005	2006	2007	2008	2009	2010	2011	2012	2013
1-3 Low	30	30.29	35.89	36.21	38.35	42.27	43.31	43.94	47.6	50	52.05	50.82	55.2	52.8	62.63
4-7 Med	31.57	32.94	35.37	39.14	43.14	47.07	49.12	54.86	56.9	60.51	62.94	63.04	68.27	66.75	72.86
8-10 High	36.47	38.39	40.71	45.62	52.71	57.05	61.13	65.43	64.76	70.71	73.41	73.1	79.5	78.17	82.08
Never Smoking Girls %	1999	2000	2001	2002	2003	2004	2005	2006	2007	2008	2009	2010	2011	2012	2013
1-3 Low	24.98	24.39	29.26	27.83	29.63	34.13	34.18	35.67	41.31	42.1	46.08	46.83	51.42	52.03	59.6
4-7 Med	28.39	29.41	31.61	33.52	36.1	41.41	42.71	48.44	53.58	56.13	59.12	61.56	65.79	67.94	71.59
8-10 High	33.84	36.22	38.73	41.55	46.87	53.02	56.22	60.92	63.42	68.31	71.21	73.3	79.78	80.89	82.79