

# Factsheet 5

## Youth smoking in New Zealand Māori and Non-Māori



### Factsheet 5:

### Youth smoking in New Zealand Māori and Non-Māori

This factsheet describes daily, regular and never smoking for Māori boys and girls compared to non-Māori boys and girls in New Zealand.

The Year 10 ASH Snapshot Survey has been used to monitor student smoking since 1999. The survey samples around half of the schools in New Zealand with Year 10 students annually. Results are reported for students who were 14 or 15 at the time of the survey. The results reported here are estimates for the whole population based on the Year 10 sample.

This is the largest survey of youth smoking in New Zealand and samples around half of all Year 10 students.

The survey normally takes place in term 3. In 2011 the fieldwork was changed to term 2.

#### Methodology

To measure if they had ever tried smoking, students were asked: *Have you **ever** smoked a cigarette, even just a few puffs?* They can answer either 'yes' or 'no'.

To measure smoking frequency, students were asked: *How often do you smoke **now**?*

Options for response include: 'I have never smoked/ I am not a smoker now', 'At least once a day', 'At least once a week', 'At least once a month' or 'Less often than once a month'.

*Regular smokers* are those students who report that they smoke daily, weekly or monthly.

To classify ethnicity, students are asked: *Which ethnic group or groups do you belong to?*

Options for response include 'NZ European', 'Māori', 'Samoan', 'Cook Island Māori', 'Tongan', 'Niuean', 'Other Pacific Island', 'Chinese', 'Indian', 'Other Asian' and 'Other'. In this factsheet all ethnicities other than Māori are classified as *non-Māori*.

Prioritised ethnicity is used to allocate students who identify with more than one ethnic group into a single category for analysis. Students who identify as Māori are coded as Māori.

The number of students identifying as Māori who completed the survey was 5,229 (20% of respondents) compared to 21,416 (80% of respondents) counted as non-Māori. Of those who identified as Māori, there were 2,359 boys (45%) and 2,870 girls (55%).

Detailed methodology can be found in the *methodology* factsheet.

#### Key Findings

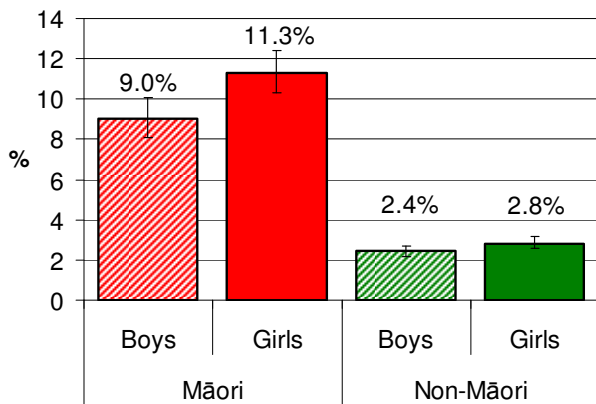
- 10.3% of Māori and 2.7% of non-Māori students were *daily smokers* in 2011.
- 9% of Māori boys and 11.3% of Māori girls were *daily smokers*. 2.4% of non-Māori boys and 2.8% of non-Māori girls were *daily smokers*.
- 18.1% of Māori and 5.8% of non-Māori students were *regular smokers*.
- 15.4% of Māori boys and 20.2% of Māori girls were *regular smokers*. 5.1% of non-Māori boys and 6.5% of non-Māori girls were *regular smokers*.
- 46.2% of Māori and 76.4% of non-Māori students were *never smokers*.
- 47.8% of Māori boys and 44.8% of Māori girls were *never smokers*. 76.8% of non-Māori boys and 76% of non-Māori girls were *never smokers*.
- Daily smoking for Māori boys and girls has been declining since 1999.

Table 1: Percentage of Māori and Non-Māori Year 10 students who were daily, regular or never smokers, 2011

	Daily	Regular	Never
Māori	10.3	18.1	46.2
Non-Māori	2.7	5.8	76.4

## Daily smokers

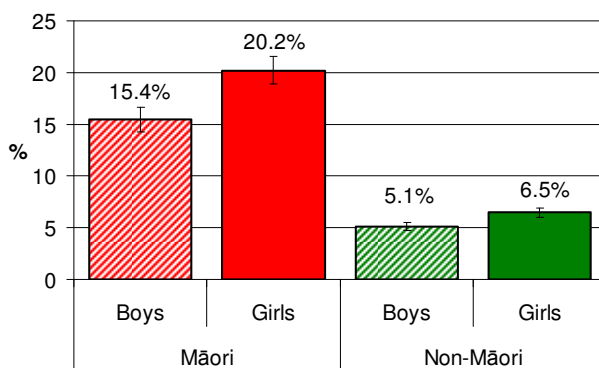
Figure 1: Percentage of Māori and Non-Māori Year 10 students who were daily smokers by gender, 2011



## Regular smokers

Regular smokers are students who report that they smoke daily, weekly or monthly.

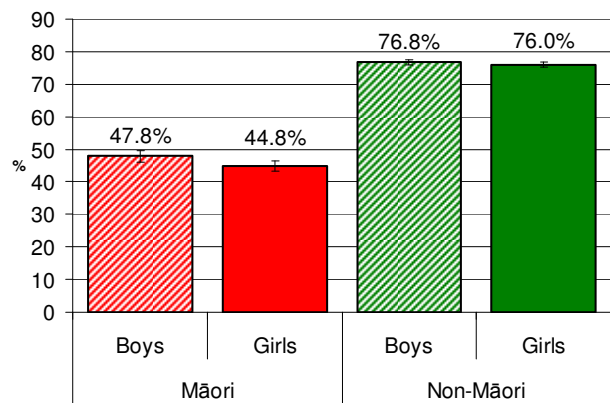
Figure 2: Percentage Māori and Non-Māori Year 10 students who were regular smokers by gender, 2011



## Never smokers

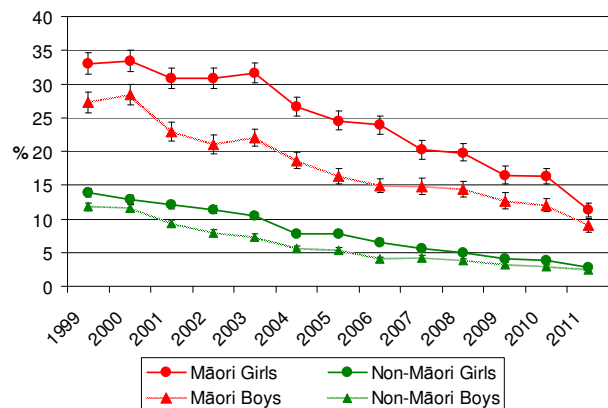
Never smokers are students who report that they have never tried a cigarette, even just one puff.

Figure 3: Percentage of Māori and Non-Māori Year 10 students who were never smokers by gender, 2011



## Smoking trends 1999-2011

Figure 4: Percentage Māori and Non-Māori Year 10 students who were daily smokers by gender, 1999-2011



## Discussion points

Smoking inequalities remain between Māori and non-Māori.

Māori girls have consistently had the highest daily smoking rates of Māori and non-Māori boys and girls since 1999.

In 2011 Māori girls were four times more likely to smoke than non-Māori girls. Māori boys were three times more likely to smoke than non-Māori boys.

However, the biggest year on year drop in daily smoking was for Māori girls from 16.3% in 2010 to 11.3% in 2011. This is the greatest year on year drop for Māori girls that has been recorded since between 2003 and 2004.

This compares to a drop by Māori boys from 12% *daily smoking* in 2010 to 9% in 2011. Whilst not as large as the drop for girls, this is also the biggest year on year reduction since between 2003 and 2004.

The survey was conducted a term earlier than in recent years. The average age of respondents would be a few months younger.

## Further Information

Detailed information on the survey and further results from the 2011 and previous ASH Year 10 Surveys can be found at [www.ash.org.nz](http://www.ash.org.nz).

## Supplementary Tables

Supplementary Table 1: Percentage of Māori and Non-Māori Year 10 Students who were Daily Smokers 1999-2011

Daily Smoking %	1999	2000	2001	2002	2003	2004	2005	2006	2007	2008	2009	2010	2011
Māori All	30.3	31.1	26.9	26.3	26.9	22.8	20.6	19.5	17.6	17.2	14.7	14.1	10.3
Non-Māori All	12.8	12.2	10.7	9.6	8.9	6.7	6.6	5.3	4.9	4.4	3.6	3.4	2.7
Māori Girls	33.0	33.4	30.8	30.8	31.7	26.7	24.5	23.9	20.2	19.8	16.5	16.3	11.3
Non-Māori Girls	13.9	12.9	12.1	11.4	10.5	7.8	7.8	6.6	5.6	5.0	4.0	3.8	2.8
Māori Boys	27.3	28.4	22.9	21.0	22.0	18.7	16.3	14.9	14.8	14.3	12.7	12.0	9.0
Non-Māori Boys	11.8	11.5	9.3	7.9	7.3	5.6	5.3	4.0	4.2	3.8	3.2	2.9	2.4

Supplementary Table 2: Percentage of Māori and Non-Māori Year 10 Students who were Regular Smokers 1999-2011

Regular Smoking%	1999	2000	2001	2002	2003	2004	2005	2006	2007	2008	2009	2010	2011
Māori All	42.8	42.9	38.4	37.3	37.3	33.6	31.7	29.1	26.7	24.7	23.3	20.9	18.1
Non-Māori All	25.9	25.1	22.0	19.0	17.1	13.9	13.7	10.5	9.6	8.9	8.2	7.2	5.8
Māori Girls	47.8	47.7	43.9	43.6	44.1	40.0	38.1	35.4	30.8	28.9	26.6	23.6	20.2
Non-Māori Girls	29.3	28.1	25.3	22.9	20.7	16.8	16.7	13.1	11.2	10.4	9.4	8.1	6.5
Māori Boys	37.3	37.6	32.6	29.8	30.2	26.7	24.7	22.5	22.2	20.3	19.5	18.2	15.4
Non-Māori Boys	22.5	22.0	18.6	15.1	13.5	10.8	10.4	7.9	8.0	7.3	6.8	6.4	5.1

Supplementary Table 3: Percentage of Māori and Non-Māori Year 10 Students who were Never Smokers 1999-2011

Never Smoked %	1999	2000	2001	2002	2003	2004	2005	2006	2007	2008	2009	2010	2011
Māori All	16.7	16.2	18.5	18.5	22.1	25.0	25.9	30.5	32.6	34.6	38.6	40.2	46.2
Non-Māori All	34.5	36.2	39.5	42.4	46.8	52.1	54.3	59.9	63.0	66.9	69.5	70.5	76.4
Māori Girls	15.2	14.8	16.7	16.4	19.0	22.1	22.9	27.1	30.6	31.6	35.9	38.5	44.8
Non-Māori Girls	32.9	34.8	37.8	39.9	43.3	49.5	51.5	56.8	61.7	64.7	67.7	69.8	76.0
Māori Boys	18.3	17.8	20.4	21.0	25.3	28.1	29.2	34.0	34.9	37.9	41.6	41.7	47.8
Non-Māori Boys	36.0	37.7	41.2	44.8	50.3	54.8	57.4	63.0	64.4	69.0	71.6	71.1	76.8