

2015 Factsheet 2

ASH Year 10 Snapshot Survey: Smoking by DHB

This factsheet describes the 'daily', 'regular' and 'never' smoking rates of participants in 2015 by District Health Board (DHB).

Methodology

To measure if they had ever tried smoking, students were asked: *Have you ever smoked a cigarette, even just a few puffs?* They could answer either 'yes' or 'no'.

To measure smoking frequency, students were asked: *How often do you smoke now?* Options for response were: 'I have never smoked/I am not a smoker now', 'At least once a day', 'At least once a week', 'At least once a month', or 'Less often than once a month'.

Daily smokers are those students who report smoking at least once a day. *Regular smokers* include daily smokers along with students who reported smoking weekly or monthly.

Ninety-five percent confidence intervals (CIs) were calculated for the results. These are a measure of the uncertainty around the estimated percentages – the longer the interval the more the uncertainty. As such, wide CIs should be interpreted with some caution when making comparisons.

Also note the response rate is higher in some regions than others, and this can vary year on year. For more detailed information, please refer to the *2015 ASH Year 10 Snapshot Survey: Information and Methodology* factsheet.

Discussion points

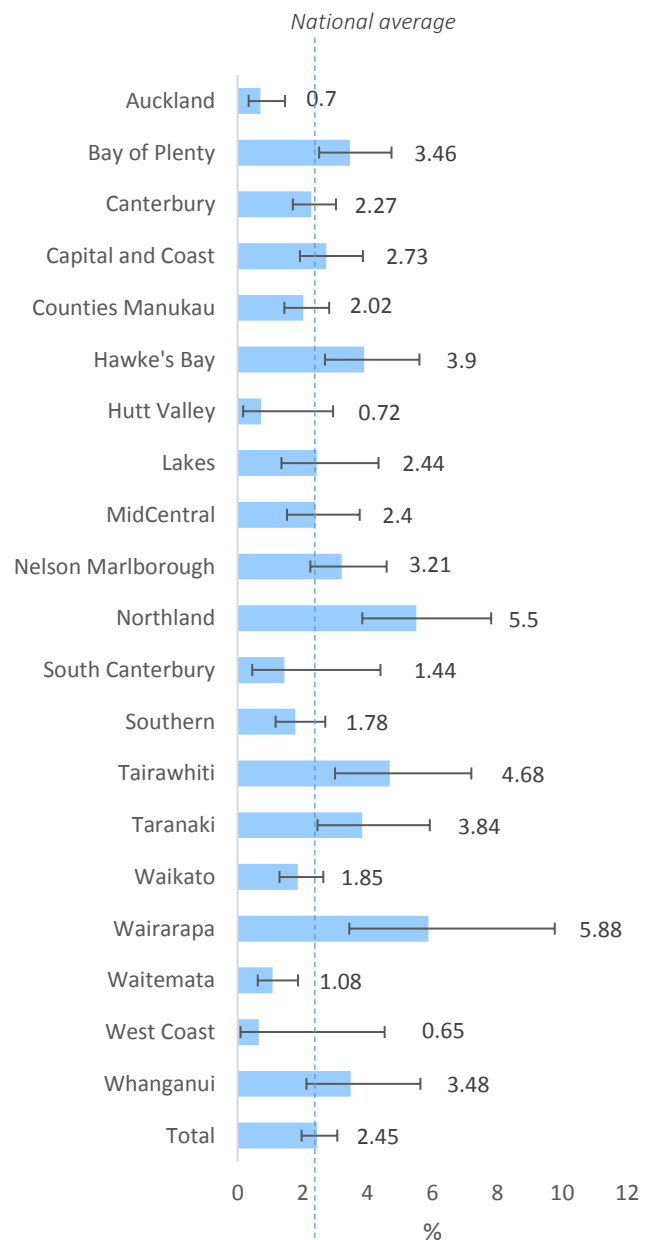
For daily smoking, just over half of all DHBs were above the national average of 2.45 percent. Refer to *Figure 1*.

For regular smoking, just over half of all DHBs were below the national average of 5.39 percent. Refer to *Figure 2*.

For never smoking, just over half of the DHBs were below the national average of 78.65 percent. Refer to *Figure 3*.

Daily smoking

Figure 1. National average for participants in the ASH Year 10 Snapshot Survey who were daily smokers, 2015



Regular smoking

Figure 2. Percentage breakdown by DHB of participants in the ASH Year 10 Snapshot Survey who were regular smokers, 2015

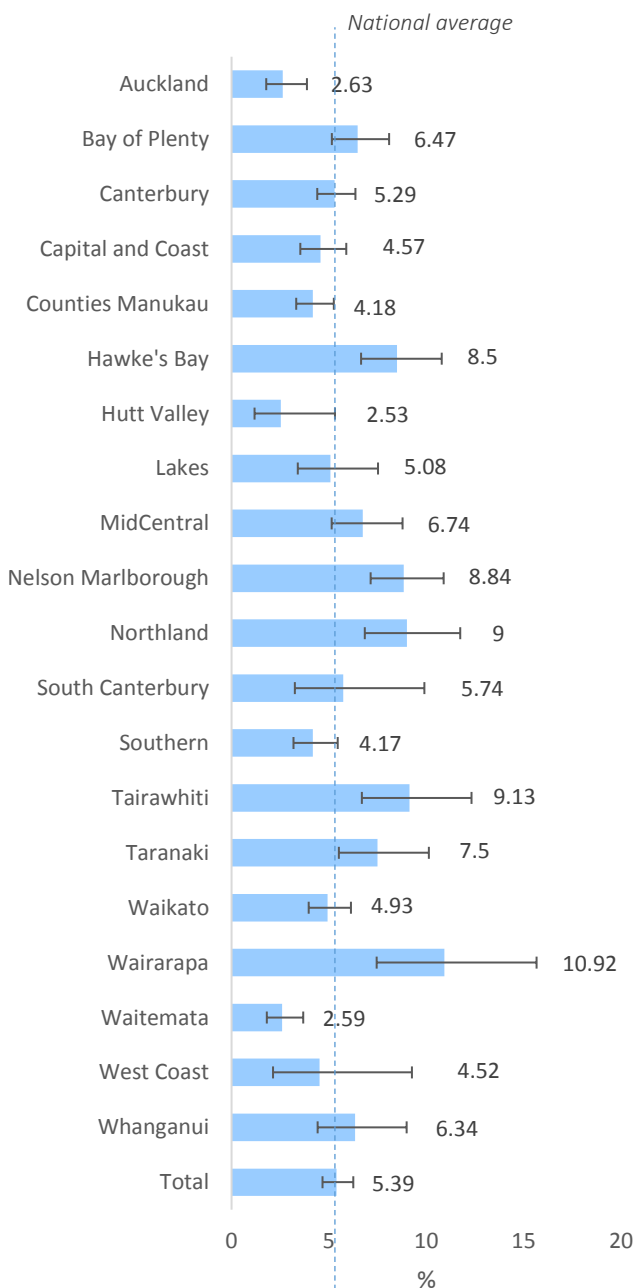
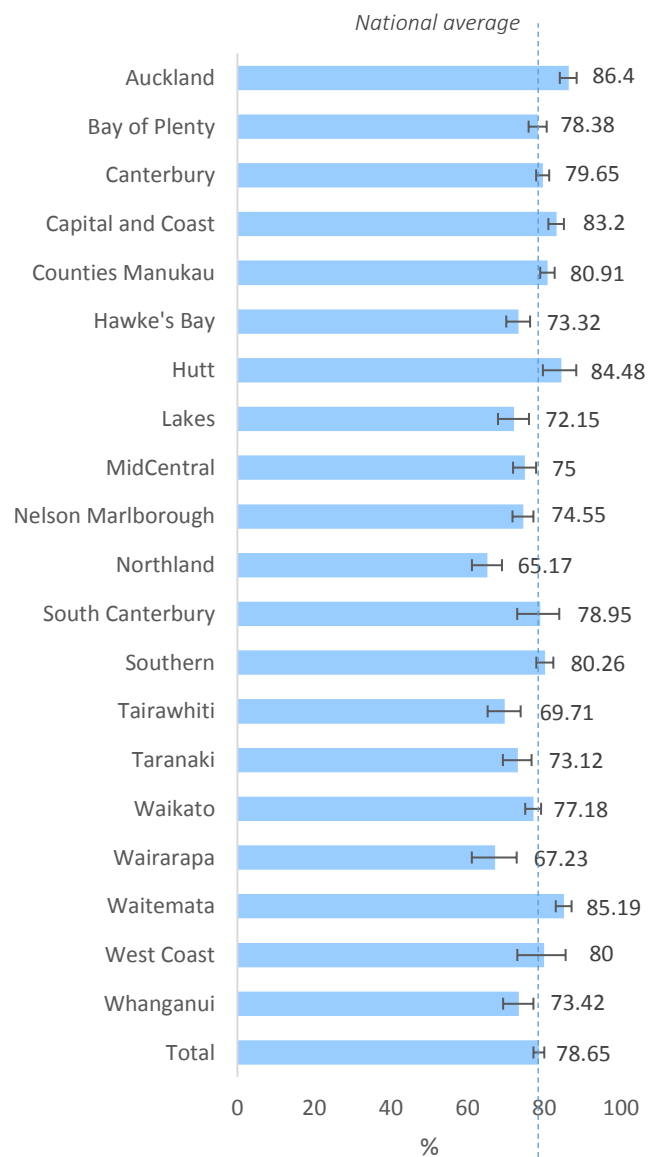


Figure 3. Percentage breakdown by DHB of participants in the ASH Year 10 Snapshot Survey who have never smoked, 2015



Further information

Further results and information on methodology can be found at <http://ash.org.nz>

Never smoking