



Stephanie Garcia Richard
COMMISSIONER

State of New Mexico
Commissioner of Public
Lands

COMMISSIONER'S
OFFICE
Phone (505) 827-5760
Fax (505) 827-5766
www.nmstatelands.org

310 OLD SANTA FE TRAIL
P.O. BOX 1148
SANTA FE, NEW MEXICO 87504-1148

November 26, 2019

Michael Sloane, Director
New Mexico Department of Game and Fish
PO Box 25112
Santa Fe, NM 87504

Re: Removal of Rio Grande Bosque Property from NM Game Commission Easement

Dear Director Sloane:

I am writing to notify you of the withdrawal of 212.53 acres of state trust land located in the Rio Grande Bosque in Bernalillo County (T9N R2E Section 36; please see attached map) from the easement that the New Mexico Game Commission holds to provide access to state trust land for New Mexico Department of Game and Fish license holders.

This parcel of land is located in a semi-urbanized area with significant residential development nearby. Earlier this year, the adjacent Valle de Oro National Wildlife Refuge opened a parking lot that provides easy access to the abovementioned parcel which has resulted in increased use during the current waterfowl season. Concurrently, the State Land Office began and continues to receive an unprecedented level of complaints from other users of this parcel and local residents expressing safety concerns. With improved access, hunting and trapping use of this small parcel will continue to grow and conflicts will increase, in an area that is not well-suited for hunting and trapping in the first instance.

This withdrawal is effective immediately. State Land Office district staff will be posting temporary signage on-site on November 26-27, 2019 to notify the public of this closure.

The State Land Office remains committed to providing managed sportsperson access to state trust lands in a manner that does not materially interfere with other authorized uses and valid rights.

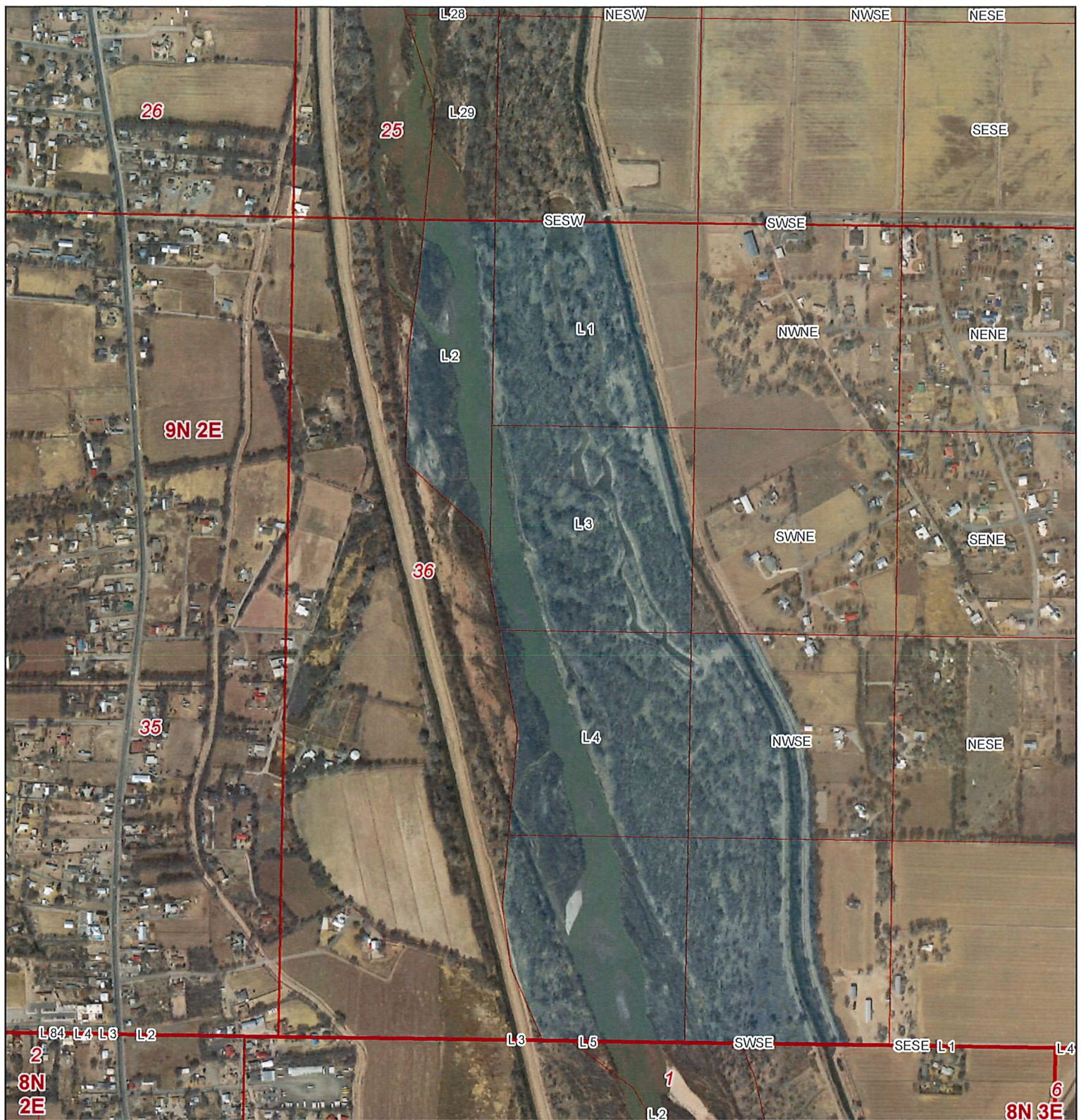
Thank you for your attention to this matter.

Sincerely,

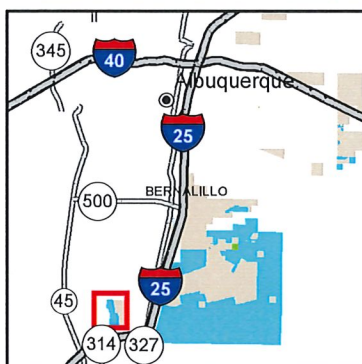
A handwritten signature in blue ink, appearing to read 'Stephanie', with a stylized flourish at the end.

Stephanie Garcia Richard
Commissioner of Public Lands

cc: Joanna Prukop, Game and Fish Commission Chair
Roberta Salazar, Game and Fish Commissioner
Jennifer Owen-White, Refuge Manager, Valle de Oro National Wildlife Refuge
Dave Simon, Director, City of Albuquerque Parks and Recreation Department



Sec. 36, T09N, R02E Map



- Cities, Towns
- County Seats
- County Boundaries
- Interstate
- Highway

New Mexico State Trust Lands

- Subsurface Estate
- Surface Estate
- Both Estates



Commissioner of Public Lands
Stephanie Garcia Richard
www.nmstatelands.org