

JOB DESCRIPTION

Benchmark Job #139

Ministry: Transportation and Highways
Branch: Regional Operations
Location: Vernon

Working Title:
Level:
Classification:

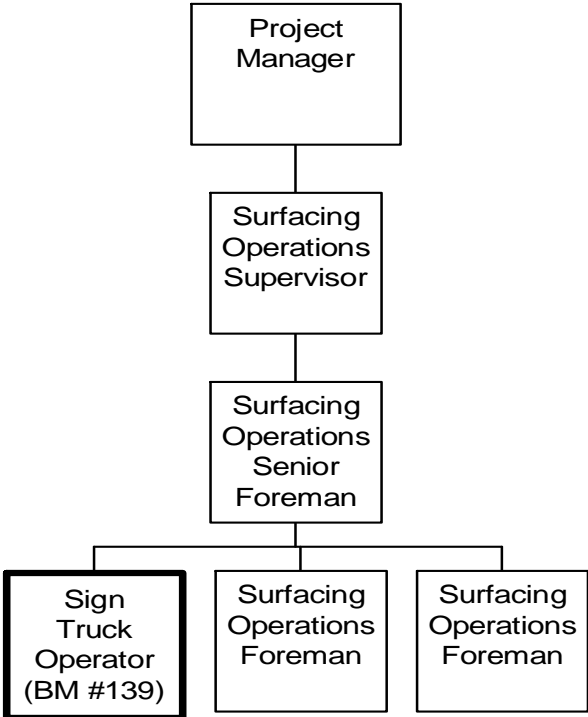
Sign Truck Operator
Range 11
Machine Operator

PRIMARY FUNCTION

To place, move, and maintain road signs and coordinate the positioning and activities of contracted traffic control vehicles and personnel.

JOB DUTIES AND TASKS

1. Places, moves and maintains road signs, sign stands, cones and barricades
 - a. ensures that signs are kept in a clean and serviceable condition
 - b. repairs and replaces signs using various tools and drills
 - c. takes an inventory of signs at the end of each season to determine how many signs to order
 - d. ensures that all signs required on sealcoat projects are placed in the correct order and position as designated and outlined in the Ministry's Traffic Control Manual for Work on Roadways
 - e. places hazard and speed limit signs in project areas
 - f. operates and performs minor maintenance on sign truck and sign rack
2. Arranges the positioning and activities of contracted control vehicles and personnel
 - a. provides input into traffic control including number of flagpersons, pilot cars and signs required at each stage on the project
 - b. arranges traffic control flagpersons to facilitate traffic flow
 - c. advises pilot car driver as to what speed to travel at over different portions of the project
 - d. arranges for emergency vehicles to bypass traffic
3. Performs other related duties
 - a. responds to enquiries and complaints from the public, Ministry personnel and contractors and refers enquiries to the Supervisor as necessary
 - b. informs businesses located on or near project sites that road works are taking place
 - c. signs timesheets of flag persons and pilot car operators to verify services received
 - d. drives a flat-deck truck with air brakes



REASON FOR CLASSIFICATION

Benchmark Job #139

Job Title: Sign Truck Operator

FACTOR NO.	REASON FOR CLASSIFICATION	DEGREE	CLASS. POINTS
1	<p>JOB KNOWLEDGE Know how to do a variety of assigned job functions or operations and how these functions or operations relate to other units in the ministry, municipality or the police, to operate sign truck, organize placement and movement of road signs and contracted traffic control personnel.</p>	D	100
2	<p>MENTAL DEMANDS Judgement to recognize differences in a variety of situations and determine the priority of tasks to respond to traffic volumes as surfacing work progresses and to ensure proper placement of signs and flag persons.</p>	C	60
3	<p>INTERPERSONAL COMMUNICATIONS SKILL Discretion required to provide direction for completion of work tasks to traffic control flag persons and pilot car driver.</p>	C	30
4	<p>PHYSICAL COORDINATION AND DEXTERITY Moderate coordination and dexterity required to drive a flat-deck truck with air brakes.</p>	C	15
5	<p>RESPONSIBILITY FOR WORK ASSIGNMENTS Guided by specific procedures that have written or oral instructions to select a course of action to complete assignments using specific past practices or previous instructions to place, move and maintain road signs and direct traffic control flag person and pilot care driver.</p>	C	50
6	<p>RESPONSIBILITY FOR FINANCIAL RESOURCES Some financial responsibility to sign timesheets of flag people and pilot car operators to indicate services were received.</p>	C	15
7	<p>RESPONSIBILITY FOR PHYSICAL ASSETS/INFORMATION Moderate responsibility to repair road signs, sign standards, cones and barricades.</p>	C	15

REASON FOR CLASSIFICATION

Benchmark Job #139

Job Title: Sign Truck Operator

FACTOR NO.	REASON FOR CLASSIFICATION	DEGREE	CLASS. POINTS
8	RESPONSIBILITY FOR HUMAN RESOURCES Responsibility to instruct contracted flagpersons and pilot car drivers on traffic control procedures.	B	9
9	RESPONSIBILITY FOR WELL BEING/SAFETY OF OTHERS Significant care and attention to ensure the proper placement of signs, positioning of flag persons and movement of pilot cars to contribute to public safety.	D	25
10	SENSORY EFFORT/MULTIPLE DEMANDS Focused attention to frequently observe the flow of traffic to determine placement and number of flag persons and ensure traffic signs remain standing.	C	12
11	PHYSICAL EFFORT Heavy physical effort to regularly lift and carry signs and sign standards.	E	24
12	SURROUNDINGS Exposure to all weather conditions almost always while positioning traffic control signs (shelter available).	D	9
13	HAZARDS Significant exposure to hazards from working around moving equipment and traffic almost always.	D	9

Total Points: 373

Level: Range 11