

Ministry: Transportation and Highways
Branch: Marine Branch, Kootenay Lake Ferry
Location: Balfour

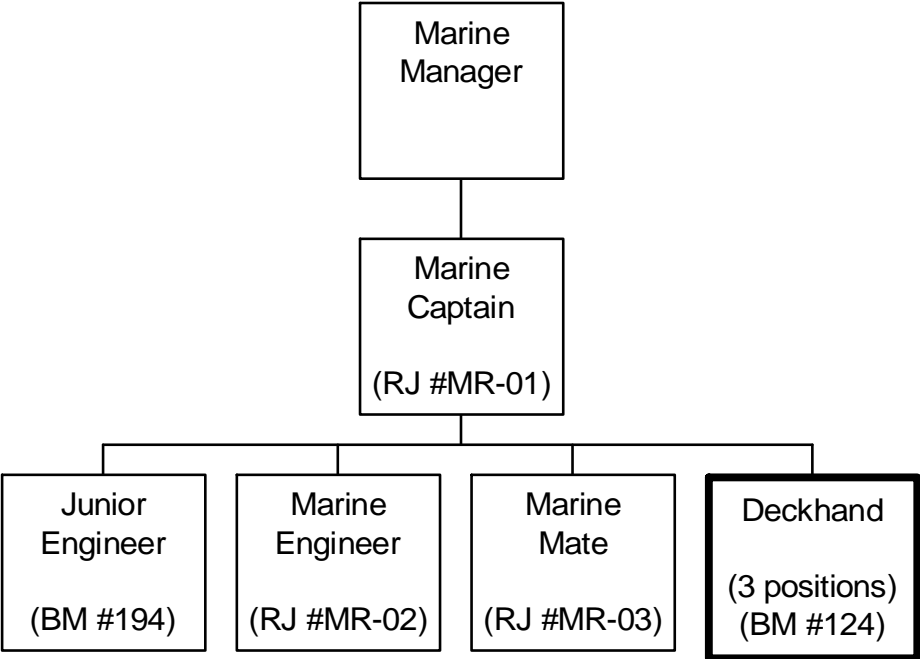
Working Title: **Deckhand**
Level: Range 9
Classification: Deckhand (Obsolete)

PRIMARY FUNCTION

To load/unload passengers and vehicles, perform deck maintenance functions and operate various terminal and deck equipment aboard ferries and in the ferry terminal.

JOB DUTIES AND TASKS

1. Loads/unloads passengers and vehicles onto and off ferries
 - a. directs vehicles and passengers during loading and unloading of ferry using hand signals and verbal instructions
 - b. makes selection and sequence of vehicle loading order by determining vehicle size, weight and length to maximize loading space and vessel balance trim
 - c. observes vehicles during loading and when on board to look for unsafe fuel leaks or gas hook-ups or auxiliary gas tanks not shut off; instructs owners to shut them off
 - d. answers inquiries, gives loading instructions, directs passengers to observe on-board safety rules and explains safety procedures
 - e. checks vehicles to ensure they comply with dangerous cargo regulations
 - f. keeps tally of types of vehicles and number of passengers being loaded and enters this data in on-board computer for each trip
 - g. assists on-board vehicles in difficulty by changing wheels, pumping up tires, jump starting engines to assist public and reduce ferry delay time
 - h. assists in the berthing and unberthing of vessels
 - i. raises, lowers and maintains ramps and gantries at terminals
 - j. communicates with ferry staff using hand held radio
2. Maintains and operates terminal and deck equipment
 - a. performs boat maintenance including chipping, painting, washing and rust removal using various solvents and cleaners, also chips and paints hull of vessel during annual refit
 - b. operates and maintains safety equipment, life boat, anchor, fire equipment, winches and davits
 - c. performs helmsman's duties as required to steer ship and maintain course
 - d. launches and takes command of rescue boat in person overboard, marine disasters or emergency situations
 - e. provides first response to on-board fires with fire extinguisher or preparing fire hoses, or wears fire fighter clothing and breathing equipment and works hoses under general direction of mate to fight on-board fires
 - f. ensures proper storage of ropes, cables and other ship supplies
 - g. splices ropes and cables and ties knots
3. Performs other related duties
 - a. provides instruction to new employees on shipboard equipment and procedures
 - b. conducts fire, life boat, anchor and other emergency drills as required



REASON FOR CLASSIFICATION

Benchmark Job #124

Job Title: Deckhand

FACTOR NO.	REASON FOR CLASSIFICATION	DEGREE	CLASS. POINTS
1	<p>JOB KNOWLEDGE Know a variety of job functions and operations and how they relate to ferry operations to direct vehicles and passengers during loading and unloading of vessel, operate and maintain deck equipment and loading ramps and command rescue boat.</p>	C	60
2	<p>MENTAL DEMANDS Judgement to recognize known differences and determine the priority of tasks to select and direct vehicle loading patterns and placement to maintain vessel trim, respond to first aid and fire situations and launch and operate rescue boat in emergencies.</p>	C	60
3	<p>INTERPERSONAL COMMUNICATION SKILLS Discretion required to exchange information needing an explanation of traffic loading procedures with the public.</p>	C	30
4	<p>PHYSICAL COORDINATION AND DEXTERITY Significant coordination and dexterity required to launch and operate rescue boat in emergency condition to rescue passengers or respond to marine emergencies.</p>	D	22.5
5	<p>RESPONSIBILITY FOR WORK ASSIGNMENTS Guided by specific procedures, select a course of action to complete assignments using previous instruction to load and unload vessel, launch and operate rescue boat, operate machinery and functions as fire crew.</p>	C	50
6	<p>RESPONSIBILITY FOR FINANCIAL RESOURCES No financial responsibility.</p>	A	5
7	<p>RESPONSIBILITY FOR PHYSICAL ASSETS/INFORMATION Significant responsibility to operate rescue equipment in emergency situations.</p>	D	22.5

REASON FOR CLASSIFICATION

Benchmark Job #124

Job Title: Deckhand

FACTOR NO.	REASON FOR CLASSIFICATION	DEGREE	CLASS. POINTS
8	RESPONSIBILITY FOR HUMAN RESOURCES Limited responsibility for human resources to provide informal guidance to new employees on procedures.	A	5
9	RESPONSIBILITY FOR WELL BEING/SAFETY OF OTHERS Significant care and attention to exercise caution to prevent accident or injury to others while performing helmsman's duties.	D	25
10	SENSORY EFFORT/MULTIPLE DEMANDS Focused sensory concentration to frequently visually and by smell and hearing check vehicles and deck equipment for unsafe conditions.	C	12
11	PHYSICAL EFFORT Relatively heavy physical effort to almost always stand and work.	D	18
12	SURROUNDINGS Exposure to loud engine noise and vibration almost always.	D	9
13	HAZARDS Significant exposure to hazards from almost always working near moving traffic to load and unload ferry.	D	9

Total Points: 328

Level: Range 9