

Ministry: Children and Family Development
Branch: Integrated Policy and Legislation
Location: Victoria

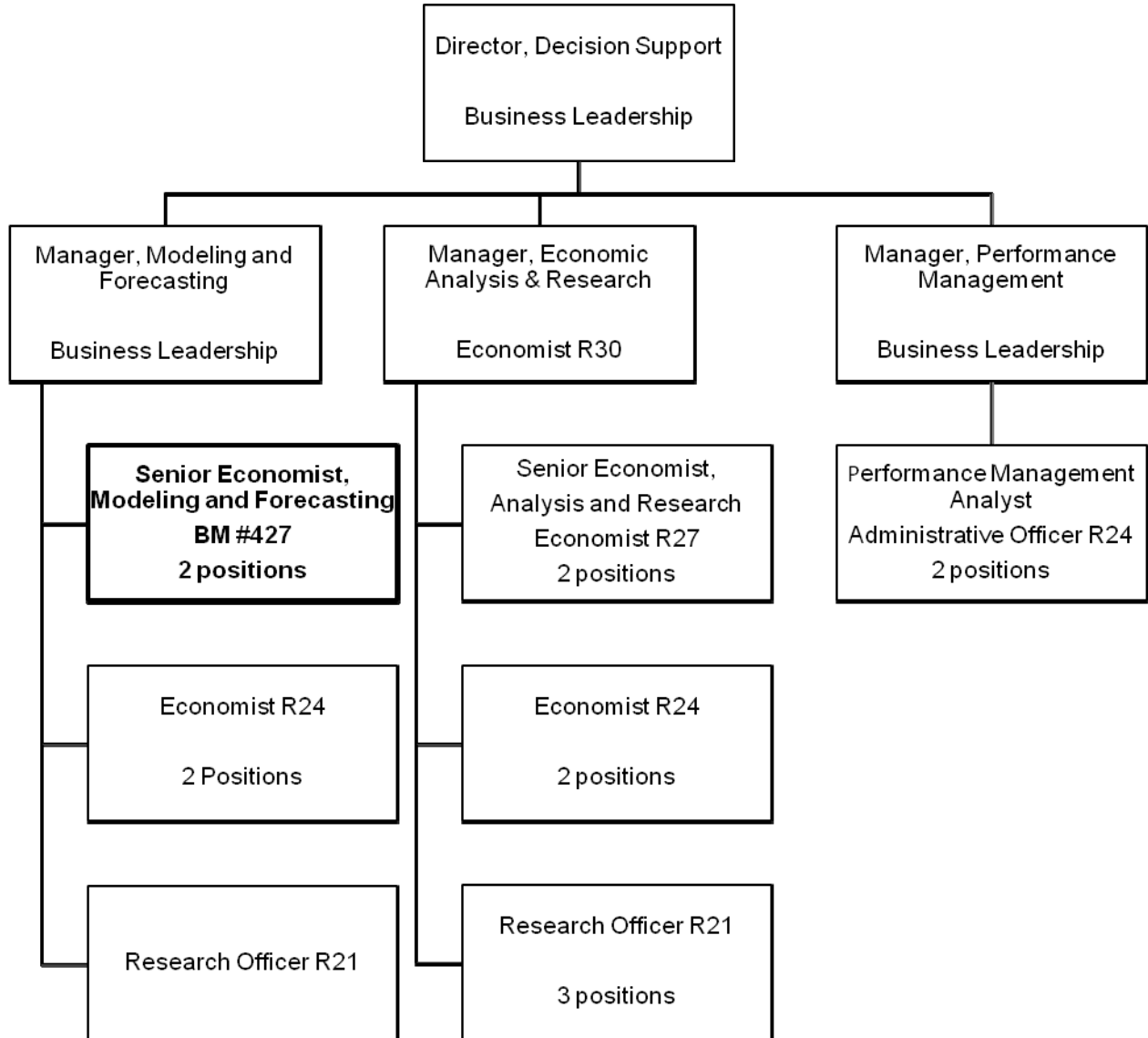
Working Title: **Sr. Economist, Modeling & Forecasting**
Level: Range 27
Classification: Economist

PRIMARY FUNCTION

To design and develop complex economic models and frameworks that support the Ministry's strategic policy direction and significant financial commitments.

JOB DUTIES AND TASKS

1. Designs econometric, statistical and financial models and modeling frameworks
 - a. designs research paradigms, develops testing and analytical methodologies, develops, refines and applies modeling techniques, performs cost/benefit assessments, and constructs policy and program assessments, options and recommendations
 - b. designs forecasting models and projections including forecasts for provincial and regional caseloads, utilization, costs and expenditures
 - c. develops and uses models to predict and understand the economic, social, program and budgetary impacts of program and policy changes and the likely effects of socio-economic changes on programs, policy and ministry direction
 - d. provides input into the development of the Ministry's research agenda and ensures the integrity, accuracy and relevance of concepts, definitions and methodology used in the design of research and socio-economic models
 - f. represents the Ministry on inter-ministry, inter-provincial, inter-jurisdictional and international economic research studies and projects
 - g. prepares technical reports and reviews and contributes to the development of Treasury Board and Cabinet Submissions
 - h. reviews externally created models, outputs and research to ensure integrity of concepts, definitions and methodology
2. Provides expert advice and guidance to Ministry staff on econometric techniques and methodologies; cost benefit analysis; forecasting methodologies; and cost analysis and estimation
 - a. conducts studies to evaluate the effectiveness of the economic research services provided to support evidence-based strategic policy and social program decisions, and develops strategies to improve research design and methodology and the accuracy of results
 - b. provides support to regional staff on modeling, forecasting, economic analysis and data issues
 - c. makes presentations to senior management, service providers and stakeholders and gains consensus on recommendations regarding the relevance and implications of models, forecasts and analysis results and findings
 - d. develops strategies, techniques and procedures for planning, conducting and communicating research reports and studies to support executive decision making
3. Provides project management through clear definition and communication of approach, timelines and deliverables
 - a. leads multifaceted projects, composed of ministry staff, staff from other ministries or other jurisdictions and stakeholders
 - b. assigns work, monitors performance and examines the work completed by project team members for accuracy and quality.
3. Performs other related duties
 - a. provides explanations on technical issues to members of the news media on behalf of the Communications Branch and ensures information on socio-economic principles/theory is communicated in plain language
 - b. reviews federal and provincial policy changes in areas impacting Ministry programs and services, and reviews literature and academic journals to ensure new trends, issues and methodologies are examined regarding their applicability in BC



REASON FOR CLASSIFICATION

Benchmark Job #427

Job Title: Senior Economist, Modeling & Forecasting

FACTOR NO.	REASON FOR CLASSIFICATION	DEGREE	CLASS. POINTS
1	<p>JOB KNOWLEDGE Understand all related issues of design and management of economic research and analysis to provide advice on the development of new econometric, statistical and/or financial models and modeling frameworks used to support evidence-based strategic policy and program decisions.</p>	I	305
2	<p>MENTAL DEMANDS Judgment required to evaluate the effectiveness of the economic research services provided to support strategic policy and social program decisions, and develop strategies to improve research design and methodology and the accuracy of results.</p>	H	250
3	<p>INTERPERSONAL COMMUNICATIONS SKILL Persuasion required to use basic negotiation skills in presenting model designs and data results to senior management, service providers and stakeholders and gaining consensus on recommendations regarding the relevance and implications of model results, forecast results and findings.</p>	D	45
4	<p>PHYSICAL COORDINATION AND DEXTERITY Moderate coordination and dexterity required to use keyboard to prepare briefing notes, papers and reports with some speed to meet project deadlines.</p>	C	15
5	<p>RESPONSIBILITY FOR WORK ASSIGNMENTS Comparative Effects – IVa / Freedom to Act - Level 6 Guided by research and economic standards, provides direct professional advice and consultation by conducting research and analysis to determine the impacts of new or existing social programs.</p>	F	160
6	<p>RESPONSIBILITY FOR FINANCIAL RESOURCES Significant financial responsibility to apply forecasting models and prepare projections for provincial and regional costs and expenditures which requires detailed planning in order to predict the financial impacts of program and policy changes.</p>	E	33
7	<p>RESPONSIBILITY FOR PHYSICAL ASSETS/INFORMATION Considerable responsibility to control processes to ensure the integrity, accuracy and relevance of concepts, definitions and methodology used in the design of research and socio-economic models.</p>	E	33

REASON FOR CLASSIFICATION

Benchmark Job #427

Job Title: Senior Economist, Modeling & Forecasting

FACTOR NO.	REASON FOR CLASSIFICATION	DEGREE	CLASS. POINTS
8	RESPONSIBILITY FOR HUMAN RESOURCES Responsibility to assign, monitor and review the work of four to five workers on a project basis.	CD	14
9	RESPONSIBILITY FOR WELL BEING/SAFETY OF OTHERS Moderate care and attention for the well being of others to conduct economic modelling and forecasting to ensure socio-economic and financial factors are considered in program development.	C	15
10	SENSORY EFFORT/MULTIPLE DEMANDS Focused requirement to frequently read statistical data and reports.	C	12
11	PHYSICAL EFFORT Moderate physical effort to frequently focus visual attention to view data on computer screen and/or printed reports and documents.	C	12
12	SURROUNDINGS Normal office setting.	A	2
13	HAZARDS Limited exposure to hazards from frequent keyboarding while developing economic models and preparing reports.	B	4

Total Points: 900

Level: Range 27