

Ministry: BC Mental Health Society  
Branch: Clinical Programs  
Location: Riverview Hospital

Working Title:  
Level:  
Classification:

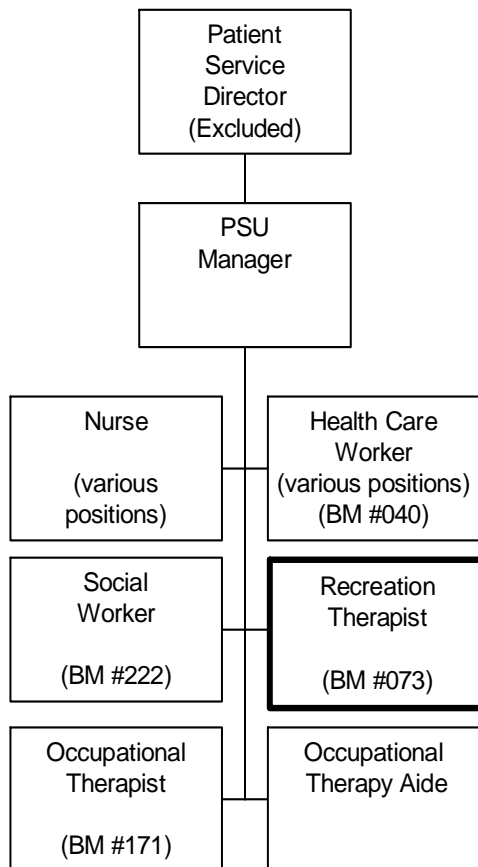
**Recreation Therapist**  
Range 21  
Activity Worker

### **PRIMARY FUNCTION**

To assess patient needs and abilities, plan and conduct therapeutic recreation programs and organize special events for assigned patients.

### **JOB DUTIES AND TASKS**

1. Provides therapeutic leisure education, social, physical and community recreation programs for assigned patients
  - a. utilizes various clinical assessment tools, such as Witt and Ellis Leisure Diagnostic Battery and Klosock Leisure Competence Measure and therapeutic interventions to assess patients' abilities and needs
  - b. develops an individual recreation/leisure treatment plan in accordance with assessment results and in conjunction with patient and treatment team
  - c. plans, implements and adjusts individual therapeutic recreation/leisure programs such as exercise/fitness programs, social groups, sports activities, etc., to meet the specific needs of patients
  - d. observes, evaluates and documents patient behaviour, abilities, performance and progress during activities, makes adjustments to treatment plan as required
  - e. participates as a member of the inter-disciplinary team and attends ward rounds, diagnostic and review conferences, documents progress on ward file and provides written reports as required
  - f. participates with inter-disciplinary team in discharge planning by identifying and orienting patient to community recreation/leisure resources
  - g. advocates on behalf of patients within the hospital and in the community
  - h. uses non-violent crisis intervention techniques to defuse hostile or aggressive behaviour
  - i. assists patients with activities of daily living
  - j. operates equipment such as wheelchair lifts, cooking appliances, exercise equipment and computer related equipment
  - k. collaborates with treatment team to determine service priorities
2. Performs administrative duties
  - a. implements and submits reports to Patient Service Manager or Professional Practice Leader on continuing quality improvement activities (e.g., workload measures, patient satisfaction surveys)
  - b. maintains/stores equipment and supplies in a secure area
  - c. arranges for replacement and repair of equipment and supplies in consultation with PS Manager
  - d. determines needs and purchases supplies/equipment for activities
  - e. estimates annual program material and supply needs, provides budget input to PS Manager
  - f. monitors patient attendance and keeps statistical program records
  - g. ensures work areas and equipment are kept clean, free of safety hazards and properly stored
3. Organizes unit or hospital wide special events (e.g. Mental Health Week, Fun Olympics)
  - a. initiates and implements special events and coordinates with unit staff, other departments, or outside agencies
  - b. promotes events through posters and memos and encourages family, friends and outside agencies to attend
4. Performs other related duties
  - a. drives hospital vehicles, including buses, to escort patients on various community outings and provides direction to assisting staff
  - b. attends ward rounds and meetings including discipline practice councils
  - c. provides education sessions and orientation to staff, students and visitors
  - d. assigns, monitors and examines the work of assigned recreation therapy students and completes student assessments for educational institutions



# REASON FOR CLASSIFICATION

Benchmark Job #073

Job Title: Recreation Therapist

FACTOR NO.	REASON FOR CLASSIFICATION	DEGREE	CLASS. POINTS
1	<p><b>JOB KNOWLEDGE</b> Understand the principles of Recreation Therapy in order to provide individual and group therapy programs to patients; assess patient needs and determine appropriate interventions and assess patient progress.</p>	G	250
2	<p><b>MENTAL DEMANDS</b> Judgement to apply structured study, analysis and interpretation of patient needs and choose an approach using a combination of accepted recreational therapy techniques to provide individual and group therapy programs to patients; assess patient needs and determine appropriate interventions, assess progress, and make adjustments to the treatment plan to meet patient needs.</p>	E	150
3	<p><b>INTERPERSONAL COMMUNICATION SKILLS</b> Persuasion required to use basic counselling skills to encourage and motivate psychiatric patients to cooperate and participate in recreational therapy activities.</p>	D	45
4	<p><b>PHYSICAL COORDINATION AND DEXTERITY</b> Significant coordination and dexterity to teach sports and recreation activities to psychiatric patients.</p>	D	22.5
5	<p><b>RESPONSIBILITY FOR WORK ASSIGNMENTS</b> Guided by recreation therapy and work unit standards, applies accepted work methods in a different way to provide individual and group therapy programs to patients; assess patient needs and determine appropriate interventions, assess progress, and make recommendations on discharge planning to the unit supervisor.</p>	E	120
6	<p><b>RESPONSIBILITY FOR FINANCIAL RESOURCES</b> Some financial responsibility to provide budget information on required supplies to Patient Service Manager.</p>	C	15
7	<p><b>RESPONSIBILITY FOR PHYSICAL ASSETS/INFORMATION</b> Moderate responsibility to drive vehicles to escort patients on various community outings.</p>	C	15

## REASON FOR CLASSIFICATION

Benchmark Job #073

Job Title: Recreation Therapist

FACTOR NO.	REASON FOR CLASSIFICATION	DEGREE	CLASS. POINTS
8	<p><b>RESPONSIBILITY FOR HUMAN RESOURCES</b>                      Responsibility to assign, monitor and examine the work of assigned recreation therapy students, as a typical, recurring task of the job, and complete student assessments for educational institutions.</p>	CC	13
9	<p><b>RESPONSIBILITY FOR WELL BEING/SAFETY OF OTHERS</b>                      Considerable care and attention to provide direct recreation therapy to psychiatric patients in an institution.</p>	E	40
10	<p><b>SENSORY EFFORT/MULTIPLE DEMANDS</b>                      Focused awareness of others to frequently observe psychiatric patients to assess progress and capabilities and to intervene to prevent injury or harm during recreational therapy activities and outings.</p>	C	12
11	<p><b>PHYSICAL EFFORT</b>                      Relatively heavy physical activity to occasionally push patients who are confined to wheelchairs, and to frequently participate in sports events with residents.</p>	D	18
12	<p><b>SURROUNDINGS</b>                      Exposure to frequent direct involvement with institutionalized patients.</p>	C	6
13	<p><b>HAZARDS</b>                      Significant exposure to hazards from frequently working around institutionalized patients who may react violently.</p>	D	9

**Total Points: 715.5**

**Level: Range 21**