



BEALL ELEMENTARY SCHOOL PARENT TEACHER ASSOCIATION

Welcome Back to School from the Beall PTA!

¡Bienvenidos de nuevo a la escuela, por el PTA de 2015-2016!

2015-2016 Beall PTA 欢迎您返校!

Добро Пожаловать обратно в школу от Родительско-учительского совета школы Beall 2015-2016!

The 2015-2016 Beall PTA Board of Directors

Melissa Scales, Kimberly Heifetz, Shana Helton, Maah Gul Khan, Elliot Alter, Xi Zhou, Juliana Lutwin, Nicole Santiago, Andrew Breychak, and Paula Tully

PTA Meeting Dates: First Tuesday of every month, starting in October (exceptions for November and February)!

We are here because of our passion for our children and our Dragon community.

Joining the Beall Parent Teacher Association (PTA) is a great way to learn about our school and connect with other parents. We have an active, committed group of members, which we hope will include you this year.

The Beall PTA has many exciting events planned for 2015-2016, including the Dragon Disco, Movie Night, Science Expo, and our annual Staff vs. Parents March Madness basketball game. The Beall PTA also funds cultural arts assemblies and provides financial support for teacher supplies and training, among other activities. Look for more information on extra-curricular activities and fall events coming home in backpack mail over the next few weeks.

The most important way you can support your school community is by becoming a member of the PTA. 100% of your membership dues goes directly to activities that enrich your child's experience at Beall. In the past few years, we have raised money to purchase new playground equipment, purchased LCD projectors for classrooms to use with smart board technology, and supported teacher Junior Great Books training. In addition, when you become a member of the PTA, you also receive a copy of the Beall Student Directory, which includes contact information for our student body. This resource is incredibly useful for scheduling play dates, getting copies of class notes when your child has been out, or sending birthday party invites. We also provide a smart-phone directory app to our PTA members, which puts all this contact information in the palm of your hand.

PTA meetings are held once a month. We understand that evenings are busy for everyone, so PTA meetings run from 7:00 pm to 8:00 pm, and do not run over. Babysitting is provided, free of charge, for current Beall students. You can view our meeting calendar online at www.beallpta.org. Our first PTA meeting is October 6. We hope to see you there!

There is lots to talk about and lots to do this year at Beall. Join us on October 6 to begin!

Estamos aquí por nuestra pasión por nuestros niños y por la comunidad del Dragón.

Hacerse miembro del PTA (Asociación de Padres y Maestros) de Beall es una gran manera de conocer a nuestra escuela y para conectarse con otros padres. Tenemos un grupo de miembros activos y dedicados, y esperamos incluirles todos Uds. este año.

El PTA de Beall ha planeado muchos gran eventos durante 2015-2016, que incluyen el Disco Dragón, la Noche Internacional, la Feria de Ciencia, y nuestro partido anual entre los empleados y los padres. El PTA de Beall también contribuye fondos para asambleas de artes culturales, y provea apoyo fiscal para suministros y entranamiento para maestros y otras actividades. Busquen más información de programas extracurriculares y eventos otoños en los papeles que les enviaremos a casa en correo de mochila durante las próximas semanas.



BEALL ELEMENTARY SCHOOL PARENT TEACHER ASSOCIATION

Hacerse miembro del PTA es la mejor manera de apoyar a nuestra escuela. 100% de los fondos recaudados se usan directamente para las actividades de nuestros hijos. En los años recientes, hemos recaudado fondos para un nuevo patio de jugar, para proyectores de LCD para usar con los Smartboards en los salones, y para el entrenamiento de los maestros en el programa Junior Great Books. Miembros del PTA reciben un directorio de los alumnos de la escuela que incluye información de contacto. Esta información es útil para planear citas de jugar, para obtener las notas y tareas de sus hijos cuando faltan a la escuela, o para correspondencia.

Las juntas del PTA ocurren una vez cada mes, de 7-8PM en punto. Se proveerá cuidado de niños gratis para los alumnos de Beall. Puede obtener el calendario de las fechas en el internet: www.beallpta.org. Nuestra primera sesión estará en el 6 de octubre. ¡Esperamos verle!

Tenemos que hablar de mucho y hacer mucho este año. Esperamos que se uniran con nosotros el 6 de octubre para empezar a planear las actividades.

加入Beall家长教师会 (PTA) 您可以很容易的了解我们的学校, 并与其他家长联系。希望今年您也可以热衷参与。Beall PTA在2015-2016 年期间预计将举办许多精彩的活动, 包括龙舞, 国际之夜, 科学博览会, 以及我们每年的教职员对家长篮球挑战赛。此外, Beall PTA 也会出资赞助文化艺术活动, 支援老师教材与训练的费用等等。在接下来的几个星期, 您会在孩子的学校背包里看到更多关于课外活动以及秋季学期的行事历。成为PTA的会员是您对学校社群至为关切的支持。百分之百的会费都将直接用在 孩子们在Beall多姿多彩的活动。在过去的两年中, 我们提供经费购买游乐场设备, 购置液晶投影机以配合教室智慧黑板的使用, 并支助少年经典著作的师资培训。此外, PTA会员也会收到一份Beall学生名录, 其中包括所有学生的联系方式。这份资讯在您安排聚会, 借用缺课时的课堂笔记, 或递送生日邀请时, 都非常有用。 PTA 月 一次会。大家上时间都有限, 所以开会从晚上七时至晚上八时, 绝不延长, 并且对 Beall在学的学生提供免费保姆服务。您可以在网上查看我们的会议月历: www.BeallPTA.org 我们第一次PTA会议在10月6日。希望到时能见到您! 今年在Beall有许多的事情要讨论与进行。希望您能在10月6日加入我们, 一齐开

Стать членом Родительско-учительского совета даст вам хорошую возможность узнать о нашей школе и восстановить отношения с другими родителями. Наша группа, в которую мы надеемся вы поступите, активна и привержена. Beall PTA уже запланировал много восхитительных мероприятий, включая дискотек, международный вечер, выставку научных работ и ежегодный баскетбольный матч (родители против учителей). Beall PTA также поддерживает культурные представления и дает деньги на покупку школьных принадлежностей и переподготовительные курсы для учителей, и т.д. В течение следующих недель вы найдете больше информации об этих внешкольных мероприятиях в рюкзаке вашего ребенка.

Наилучший способ для вас поддерживать школьное сообщество, это стать членом Beall PTA. 100% взносов тратятся напрямую на мероприятия, которые улучшают школьный опыт вашего ребенка. В последние два года мы собирали средства, чтобы купить новую детскую площадку, проекторы для классов, чтобы дети смогли попользоваться интерактивной технологией как "smartboard" и поддержали обучение учителей по программе Junior Great Books. Также, вступив в членство Beall PTA, вы получите копию Beall Student Directory, которая включает в себе контактную информацию всех школьников из нашей школы. Этот ресурс крайне полезен, когда хотите назначить встречу для игр вашего ребенка с его друзьями, получить записи уроков, если ваш ребенок пропустил или послать приглашения на день рождения.

Встречи Beall PTA проводятся раз в месяц. По-скольку вечер является насыщенным временем для всех – встречи длятся всего час с 19.00-20.00, железно. Бебиситер предоставляется. Детей, являющимися школьниками из Beall, можно привести с собой и оставить с бебиситером бесплатно. Смотрите расписание встреч он-лайн по адресу: www.BeallPTA.org. Первая встреча состоится 6 октября. Надеемся вас увидеть! Есть много, о чем можно поговорить и много, чем заниматься в этом году. Надеемся, чтобы вы присоединились к нам 6 октября, когда приступим к процессу планирования. Суважением,



BEALL ELEMENTARY SCHOOL PARENT TEACHER ASSOCIATION

Communications with the Beall Community

For an electronic version of this document with hyperlinks to the websites, go to <http://BeallPTA.org/Resources>.

Welcome to Beall! There are SO many ways to keep informed of all things Beall and to get involved in the school and PTA.

Backpack Mail

Many important documents come in backpack mail from your child's teachers, the school, PTA, after school vendors and more, so please make sure you check your child's backpack every day.

Beall PTA & Beall Elementary websites

The daily updated www.beallpta.org has a ton of information including:

- [Beall PTA Google Calendar](#)
- [After-school activities](#) including registration, program info and schedule
- [Membership signup](#)
- [Donation](#) portal
- [Teacher & Staff Wish Lists](#)
- [Events](#) info
- Links to many useful [resources](#) and much more!

The school's website, <https://www.montgomeryschoolsmd.org/schools/bealles/>, has a calendar, teacher and staff contact information, resources for students, and much more.

Bulletin Boards

The Bulletin boards are located inside the school's front doors and outside next to the gym door, next to the walkers exit. Bulletin boards are located inside the school's front doors and outside and around the corner from the gym door (on your right as you head outside the school), near the walkers' exit.

Email

- You will receive periodic and important Email blasts from www.beallpta.org once you join the PTA as a member or sign up as a supporter on the site. This is one-way communication but instantaneous. You will get urgent messages in a timely manner through these email messages, which generally come from Communications@BeallPTA.org. If you wish, unsubscribe anytime by clicking on the removal message at the bottom of the email or log into your account.
- A Beall PTA Newsletter comes out once a month starting in September via email subscription only.
- The Principal Newsletter is published every two weeks. **Please, please, please make sure the Beall ES office has your correct email on file**, as this Newsletter and other important updates are often sent directly from Principal Alter. **The school's email list is not run by the PTA.**



BEALL ELEMENTARY SCHOOL PARENT TEACHER ASSOCIATION



Monthly Beall PTA Meetings

Beall PTA meetings are held monthly in Beall's Media Center and are open to the Beall community. These meetings generally are scheduled for the first Tuesday of each month. Child care is provided by Global. Periodically, workshops and other special events / activities are planned as part of the monthly meetings. This is a great way to find out what's going on at school and to get involved.



Facebook

"Like" Beall PTA on [Facebook](#). There are moderators for this page, and it is open for posting and comments by those who "like" it. Postings will show up in your mailbox and/or on your wall depending on who is posting the message and your personal settings. Unsubscribe by clicking "unlike."

Beall PTA Yahoo! Group Listserv

Subscribe (or unsubscribe) to the [Beall PTA Yahoo! Group Listserv](#) by going to http://groups.yahoo.com/group/beall_es_pta/. This is a moderated but open forum meaning that anyone can post and reply. We ask that you do so respectfully, identify yourself and do not post commercial messages. When you subscribe and receive an email confirmation, click reply if you do not have a Yahoo email account (do NOT click on the link embedded in the message).

And lastly, don't forget about all the useful [Montgomery County Public School](#) links:



[Montgomery County Public Schools](#)

[Beall Elementary School](#): The official school website

[Quick Notes](#): News and Information for the MCPS Community



[Beall ES Twitter](#): Subscribe to Bytes from Bella on Twitter!

*The electronic modes may duplicate messages,
so decide which one(s) work best for you and unsubscribe to the others.*



BEALL ELEMENTARY SCHOOL PARENT TEACHER ASSOCIATION

Painless Fundraising for Beall!

Please help raise money for Beall doing what you already do. . . SHOPPING! Tell your family members, neighbors, godparents, colleagues and friends! **You also can input your Giant and Harris Teeter card numbers into the AtoZ School Directory App, and our PTA Directory Team will do the work for you!**

Box Tops for Education & **Labels for Education**

Look on boxes of Cheerios, Hanes, Kleenex, Betty Crocker, Bisquick, and more. Show your children how to find them for you! See all the eligible products at boxtops4education.com and labelsforeducation.com. Clip them neatly, put them in Ziploc bags & send them with your child(ren) to their homeroom(s) (or drop them in the box in the school office designated for Box Tops & Labels) **by January 15, 2016!** The top three classes that turn in the most labels by January 15 will receive prizes! Reward checks go to the Beall PTA.

AmazonSmile

AmazonSmile – Amazon donates 0.5% of the price of your eligible AmazonSmile purchases to the charitable organization of your choice. Simply go to smile.amazon.com and designate Beall Elementary School PTA as your recipient. Remember to return to AmazonSmile to make your Amazon purchases (account information is the same for both AmazonSmile and Amazon). Reward checks go to the Beall PTA.

Giant: Code #00716

Log on to giantfood.com/aplus to register your Giant card online, or dial 1-877-366-2668 to register your card over the phone. This simple process makes a HUGE difference, raising over \$3700 last year alone – so please be sure to register your card to benefit Beall using ID #00716 or enter this information into the School Directory App, and we'll do it for you! Reward checks go directly to Beall Elementary School.

Harris Teeter: Code #7884

Join Harris Teeter's Together in Education program. In store, give the cashier Beall's code (7884) and your VIC card when you check, out and your card will be linked for the entire school year, or go online to http://www.harristeeter.com/community/together_in_education/link_to_your_school.aspx and use code #7884 for Beall. Once your card is linked, Beall Elementary School will receive a percentage of your Harris Teeter Brand purchases. Reward checks go directly to Beall Elementary School.

Target: Code #58211

Enroll in Target's Take Charge of Education program by linking your REDcard with Beall Elementary School. Target will donate 1% of your REDcard purchases at Target and Target.com. Current REDcard holders can visit www.target.com and look for the Take Charge of Education link at the bottom. Search for our school or type in 58211 for Beall Elementary School. Reward checks go directly to Beall Elementary School.

Questions about Painless Fundraising?

Contact our 2015-16 Painless Fundraising Coordinator, Karen Folkart, at kfolkart@hotmail.com. Contact our 2015-16 Box Tops & Labels Coordinator, Rob Ritter, at ritterrob15@gmail.com, for questions about Box Tops & Labels for Education.



BEALL ELEMENTARY SCHOOL PARENT TEACHER ASSOCIATION

2015-16 Beall PTA Contacts

PTA Board of Directors:

President: Paula Tully (President@BeallPTA.org)
Vice President of Programs: Melissa Scales (Programs@BeallPTA.org)
Vice President of Communications: Kimberly Heifetz (Communications@BeallPTA.org)
Treasurer: Maah Gul Khan (Treasurer@BeallPTA.org)
Secretary: Shana Helton (Secretary@BeallPTA.org)
Principal: Elliot Alter (Elliot_Alter@mcpsmd.org)
MCCPTA Delegates: Andrew Breychak (Delegate2@BeallPTA.org) and Nicole Santiago (prpeace7@gmail.com)
Fundraising Chairperson: Juliana Lutwin (Fundraising@BeallPTA.org)
Membership Chairperson: Xi Zhou (Membership@BeallPTA.org)

Communications Committee:

Committee Chairperson: Kimberly Heifetz (Communications@BeallPTA.org)
Beall PTA Yahoo! (E-list) Moderators: Kimberly Heifetz (Communications@BeallPTA.org) and Paula Tully (President@BeallPTA.org)
Beall PTA Facebook Administrators: Kimberly Heifetz (Communications@BeallPTA.org) and Paula Tully (President@BeallPTA.org)
Flyer Masters: Liza Ford (Liza.Ford12@gmail.com) and Christy Koenig (ChristyKoenig@hotmail.com)
School Directory: Denise Harvey (HarveyDenise@yahoo.com), Tim Hefferon (TimHefferon@gmail.com)
and Jackie Luk (Lukdot6@yahoo.com)
Translators:
Arabic - James Pearce (JamesIPearce@gmail.com)
Chinese - Xi Zhou (Membership@BeallPTA.org)
Russian - Dasha Kimelman (dkimelman@gmail.com)
Spanish - Patricia Quiroz (sonera66@yahoo.com) and Yanira Hernandez (yaniradellano@gmail.com)
Urdu/Hindi - Maah Gul Khan (Treasurer@BeallPTA.org)
Please contact Communications@BeallPTA.org to be added as a translator.

Membership & Outreach Committee:

Committee Chairperson: Xi Zhou (Membership@BeallPTA.org)
Beall ES Staff Representative: Kathleen Cohan (Kathleen_A_Cohan@mcpsmd.org)
Bulletin Boards: Erin Bastien (Erin.Bastien.en@gmail.com)
Dragon Men Coordinator: Jon Walsh (JonWalsh@beallpta.org)
Inter-County Booking (ICB): Rob Ritter (RitterRob15@gmail.com)
Recess Volunteer: **Coordinator Needed; please contact President@BeallPTA.org if interested.**
Room Parent Coordinator: **Coordinator Needed; please contact President@BeallPTA.org if interested.**
Volunteers Coordinator: **Coordinator Needed; please contact President@BeallPTA.org if interested.**
Webmaster: Yvonne Bersofsky (Ybersofsky@gmail.com)
Workshops: Molly Park (mollykelleher8@gmail.com)
Yearbook: Liza Ford (Liza.Ford12@gmail.com)

Annual Financial Audit Committee:

Committee Members needed; please contact President@BeallPTA.org or Treasurer@BeallPTA.org if interested.



BEALL ELEMENTARY SCHOOL PARENT TEACHER ASSOCIATION

Fundraising & Business Outreach Committee:

Committee Chairperson: Juliana Lutwin (Fundraising@BeallPTA.org)
Scholastic Book Fair: Amy Bulson (Amy@bulson.com)
Dine Out Nights: Beth Wisneski (Beth.Ed@Verizon.net)
Donation Coordinator: **Coordinator Needed**; please contact President@BeallPTA.org if interested.
Painless Fundraising: Karen Folkart (Kfolkart@hotmail.com)
Box Tops & Labels for Education: Rob Ritter (ritterrob15@gmail.com)
Fundraiser - Rockville Rewards: Juliana Lutwin (Fundraising@BeallPTA.org) and Paula Tully (President@BeallPTA.org)
Fundraiser - Spirit Cups: **Coordinator Needed**; please contact President@BeallPTA.org if interested.
Labels for Education & Box Tops: Rob Ritter (RitterRob15@gmail.com)
Silent Auction Coordinator: **Coordinator Needed**; please contact President@BeallPTA.org if interested.
Spirit Wear: Denise Harvey (HarveyDenise@yahoo.com)

School & Community Events:

Back to School Picnic: Vivi Cowl (vcowl@comcast.net)
Cultural Arts Assemblies: Elliot Alter (Elliot_Alter@mcpsmd.org)
Dragon Disco: Carolina DeVriendt (Carolina_B_DeVriendt@mcpsmd.org)
End of Year Picnic: **Coordinator Needed**; please contact President@BeallPTA.org if interested.
Gardening Coordinator: **Coordinator Needed**; please contact President@BeallPTA.org if interested.
Grandparents Day: **Coordinator Needed**; please contact President@BeallPTA.org if interested.
Holiday Luncheon: Julianna Panzer (JHarrisPanzer@gmail.com)
March Madness: Dian Jose (dianjose3@gmail.com) and Andy Jose (ajose@fjcapital.com)
Movie Night: Susan Gorant (sjgorant@yahoo.com)
Multicultural / International Night: Debbie Cohen (deborahbcohen@gmail.com) and Katelyn Aungst (katelyn.g.aungst@mcpsmd.net)
Read-a-thon: Susan Gorant (sjgorant@yahoo.com)
Science Expo: Kay Newhouse (BeallSciExpo@gmail.com)
Staff Appreciation Week: Rachael Wong (leia98psu@hotmail.com)
Welcome Back Breakfast: Jackie Luk (Lukdot6@yahoo.com)

Thank you to all our volunteers! Want to help? Email and join a team! Or fill out a form online: www.beallpta.org/get_involved



BEALL ELEMENTARY SCHOOL PARENT TEACHER ASSOCIATION

2015 - 2016 Beall PTA Events & Meetings

Dates are subject to change. Please keep an eye out for the dates of Dine Out Nights and Dragon Men events!
Please confirm dates and times for all events at <http://www.beallpta.org/events>

Date	Event Time	Event Name	Primary Contact	Primary Contact E-mail
8/2/2015	10am - 12pm	Kindergarten Playdate 1 @ Welsh Park	Melissa Scales	Programs@beallpta.org
8/13/2015	6-8pm	Meet the Principals: <i>Sweet Frog</i>	Juliana Lutwin	Fundraising@beallpta.org
8/15/2015	10am - 12pm	Kindergarten Playdate 2 @ Welsh Park	Melissa Scales	Programs@beallpta.org
8/27/2015	8-11am	Welcome Back Staff Breakfast	Jackie Luk Lin	Lukdot6@yahoo.com
8/27/2015	7-8pm	Kindergarten Parents Orientation: PTA Booth	Paula Tully	President@beallpta.org
8/28/2015	1-2pm	Open House & PTA Social: PTA Booth	Paula Tully	President@beallpta.org
9/9/2015	7-8pm	Back to School Night: PTA Booth 2-night event	Xi Zhou	Membership@beallpta.org
9/18/2015				
<i>Raindate 9/25</i>	6-8pm	Back to School Picnic	Vivi Cowl	vcowl@comcast.net
10/6/2015	6:30-8pm	PTA Meeting: Meet the Specials	Paula Tully	President@beallpta.org
10/15/2015	7-9pm	Movie Night: <i>TBD</i>	Susan Gorant	sjgorant@yahoo.com
11/4/2015	7-8pm	PTA Meeting	Paula Tully	President@beallpta.org
		Scholastic Book Fair: 5-Day Event (Preview 11/9 & 10; Sales 11-13th)		
11/9/2015	Varied		Amy Bulson	Amy@bulson.com
11/10/2015	9:15-10am	Tea with Mr. Alter		<i>Coordinator Needed</i>
11/20/2015	7-8:30pm	Dragon Disco	Carolina DeVriendt	Carolina_B_DeVriendt@mcpsmd.org
12/1/2015	6:30-8pm	PTA Meeting & Workshop: <i>TBD</i>	Paula Tully	President@beallpta.org
12/9/2015	11am-1pm	Holiday Luncheon for the Staff	Julianna Panzer	JHarrisPanzer@gmail.com
12/23/2015	9-11am	Grandparents Morning at Beall		<i>Coordinator Needed</i>
1/5/2016	6:30-8pm	PTA Meeting & Workshop: <i>TBD</i>	Paula Tully	President@beallpta.org
1/26/2016				
<i>Raindate 1/28</i>	6-8pm	Science Expo	Kay Newhouse	BeallSciExpo@gmail.com
2/3/2016	6:30-8pm	PTA Meeting & Silent Auction		<i>Coordinator Needed</i>
2/19/2016				
<i>Raindate 2/25</i>	7-9pm	Multicultural Night	Debbie Cohen	deborahbcohen@gmail.com
3/1/2016	7-8pm	PTA Meeting: Appoint Nominating Committee & Workshop	Paula Tully	President@beallpta.org
<i>TBD</i>	7-10pm	March Madness: Parents vs Staff (@ RMHS)	Dian Jose	dianjose3@gmail.com
4/5/2016	7-8pm	PTA Meeting: Officer Nominations	Paula Tully	President@beallpta.org
5/3/2016	7-8pm	PTA Meeting: Officer Elections	Paula Tully	President@beallpta.org
5/12/2015	5-8pm	Food Truck Night		<i>Coordinator Needed</i>
5/13/2016		Dragon Read-A-Thon: 3-Week Event		<i>Coordinator Needed</i>
5/16/2016	Varied	Staff Appreciation Week: 5-Day Event	Rachael Wong	leia98psu@hotmail.com
6/7/2016	7-8pm	PTA Meeting: Volunteer Celebration	Paula Tully	President@beallpta.org
6/3/2016				
<i>Raindate 6/10</i>	6:30-8:30pm	End of the Year Picnic		<i>Coordinator Needed</i>

Become a member online at www.beallpta.org/membership

Nothing is required of our members! Membership comes with a school directory and app – great for party planning and play-dates, plus reduced prices for select events, and more. Membership also comes with knowing that you are helping to build and grow our Community.

PTA meetings are held in the Media Center and babysitting is provided for members by Global Children Center in the All Purpose Room. You must RSVP online to reserve your space under “event” at www.beallpta.org.

Questions or comments? Email: info@beallpta.org

Nothing is required, but, hey, we still need you! Want to help? Email: volunteer@beallpta.org





BEALL ELEMENTARY SCHOOL PARENT TEACHER ASSOCIATION

Recess Volunteer Contest

Concurso Voluntario para el Recreo

课间志愿者竞赛

The Beall PTA wants to focus on increasing people-power at recess time! We invite our community members to volunteer at recess and win prizes!!! We will pick **two** winners at the end of every other month (October, December, February, April and June) for a \$50 gift card each. The more you volunteer, the more chance you will win a prize! *The kids will love you for it!*

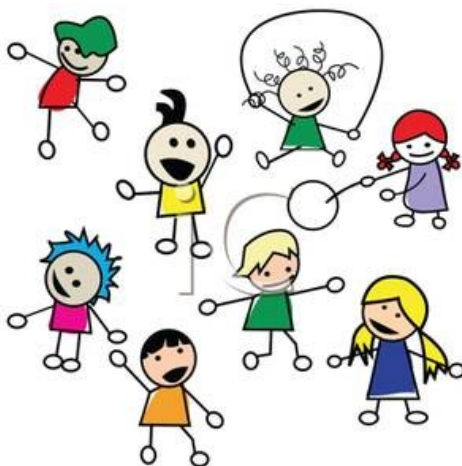
Find out more at www.beallpta.org/volunteer

Como Beall PTA quiere centrarse en el incremento del poder de la comunidad en el recreo, es por ello que nos gustaría invitar a nuestros miembros de la comunidad como voluntarios en el recreo y ganar premios! Vamos a elegir 2 ganadores al final de cada bimestre (cada 2 meses Octubre, Diciembre, Febrero, Abril y Junio). Les daremos una tarjeta de regalo por \$50 cada una. Cuanto más voluntariado haga más posibilidades de ganar el premio! Los niños se lo agradecerán!

Podra encontrar más informacion en www.beallpta.org/volunteer

Beall家长与教师协会希望把更多的精力放到课间活动上，我们愿意邀请社区成员在学校课间活动时作志愿者，而且志愿者将有机会得到奖品!!!我们将每两个月（10月，12月，2月，4月和6月）选出两个获奖者，获奖者将得到\$50的礼物卡。志愿者工作做得越多，获奖机会也将越多！孩子们将因您的付出而爱你们！

更多信息请访问 www.beallpta.org/volunteer





BEALL ELEMENTARY SCHOOL PARENT TEACHER ASSOCIATION

Why You Should Become a Beall PTA Member

NOTHING is required of you to be a member.

All our work is supported by your membership fee.

So please become a member online at www.beallpta.org/membership (preferred method) or use the form provided.

A partial list of all the things that your tax deductible fee supports...

State of the art technology in the classrooms, Cultural Arts Assemblies, Media Center books & equipment, School Directory, recess programs, after school foreign language classes, Dragon Disco, Movie Night, Science Expo, Dragon Men & Donut, Back-to-School Picnic, Multicultural Night, Butterfly Garden, March Madness Parents vs Teachers Basketball game, art integration in the classroom, Dine Out Nites, ice cream socials, a brand new playground structure, shed & outdoor playground equipment, recess activities, financial aid for field trips, mentoring, field trips, End of the Year Family Picnic, indoor games, monthly Dragon Deadline Newsletters, Fridge Notes Calendars, PTA website, teachers training, reimbursements for teachers' school supplies, Staff Appreciation Week events, Staff Welcome Back Breakfast, Staff Holiday Luncheon, and much, much more.

Thank you for supporting our little Dragons!

BUT... We need you! The PTA is run solely by VOLUNTEERS! So if you want to help, please email: volunteer@beallpta.org or fill out the form at www.beallpta.org/get_involved

Please check our website at <http://www.beallpta.org/events> for changes to events.

PTA meetings are held in the Media Center on the first Tuesday of every month (starting October 6th), except November and February, and babysitting is provided for members by Global Children Center in the All Purpose Room. You must RSVP online to reserve your space under "event" at <http://www.beallpta.org/events>

Questions or comments? Email: info@beallpta.org

Become a member online at www.beallpta.org/membership



BEALL ELEMENTARY SCHOOL PARENT TEACHER ASSOCIATION

Membership/Donation Form

会 / 捐款表
Formulario de Miembro/Donación

Your donation is 100% tax deductible.
您的捐款是 %100 可以抵税的
Su donación es 100% deducible de impuestos

Save time, become a member online at www.BeallPTA.org

I am a: Parent/Guardian Beall E.S. Staff Member Other (Grandparent, Community Member, etc.)

Adult #1 First Name _____ Last Name _____ Email _____

Adult #2 First Name _____ Last Name _____ Email _____
(Family Membership)

Youngest Child First Name _____ Last Name _____ Grade/Teacher _____

Home Street Address _____ Zip _____

Please choose the appropriate box(es):

Individual Membership (non-Staff): \$25 Includes a school directory & access to smart phone app	\$
SAVE \$10 Family Membership: \$40 Covers two adults and includes a school directory & access to smart phone app (make sure to complete the Adult #2 Name lines, above)	\$
Staff Membership*: \$15	\$
Tax Deductible Donation: \$10 per student suggested (any amount welcome)	\$

Total amount enclosed \$

Check enclosed (Ck #) _____ Cash enclosed Credit Card (please sign up online)

Please make checks payable to "Beall PTA". Return this form to school with your payment in a sealed envelope marked "PTA Membership".

* Staff memberships are allowed to request classroom supplies reimbursement of \$100/year. Please submit receipts by 3/31/16.

Please detach as your receipt. Beall PTA Tax ID # 52-1648484

2015-16 Membership Campaign

Thank you for your 100% tax deductible donation of \$ _____ Date ____/____/201__

Your Beall PTA membership fee goes directly to paying & coordinating many events and activities at Beall ES. Beall PTA sponsored programs have included: Technology fund, Cultural Arts assemblies, Media Center books & equipment, School Directory, recess programs, after school foreign language classes, Dragon Disco, Movie Night, Science Expo, Dragon Men & Donut, Back-to-School Picnic, Multicultural Night, Butterfly Garden, March Madness Parents vs Teachers Basketball game, art integration in the classroom, Dine Out Nights, ice cream socials, a brand new playground structure, shed & outdoor playground equipment, recess activities, financial aid for field trips, mentoring, field trips, End of the Year Family Picnic, babysitter at the monthly meetings, monthly Dragon Deadline Newsletters, Fridge Notes Calendars, PTA website, teachers training, reimbursements for teachers' school supplies, Staff Appreciation Week events, Staff Welcome Back Breakfast, Staff Holiday Luncheon, and more. Thank you for supporting our little Dragons!

