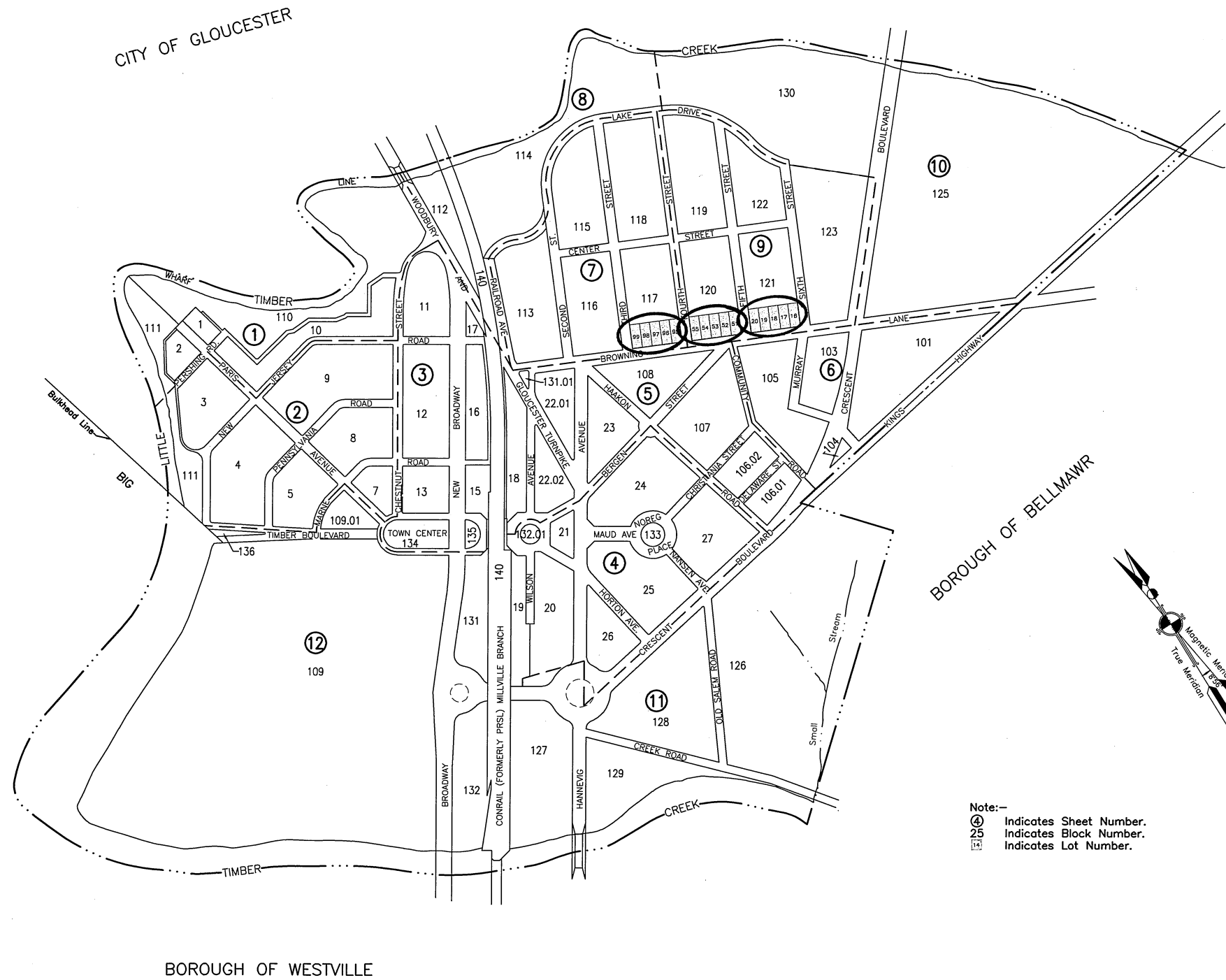


# **EXHIBIT B**

## **Redevelopment Study Map**

**Last Revised:**  
April 16, 2020



**Notes:**

1. MAPPING BASED ON CURRENT VERSION OF PLATE 7 AND 9 OF THE INDEX TAX MAP AND THE BROOKLAWN BOROUGH TAX MAPS.
2. REDEVELOPMENT AREA INVESTIGATION AUTHORIZED BY GOVERNING BODY RESOLUTION NO. 88-17 ADOPTED APRIL 17, 2017 AND GOVERNING BODY RESOLUTION #137-19 ADOPTED SEPTEMBER 16, 2019.

STATEMENT SETTING FORTH THE BASIS FOR THE BROOKLAWN PLANNING BOARD'S PRELIMINARY REDEVELOPMENT INVESTIGATION

THE BOROUGH COUNCIL CONTINUES TO SEEK TO ATTRACT NEW BUSINESSES AND PROMOTE REDEVELOPMENT AND BEAUTIFICATION PROJECTS THROUGHOUT BROOKLAWN BOROUGH. THE NEW JERSEY STATE DEVELOPMENT AND REDEVELOPMENT PLAN PRIORITIZES REDEVELOPMENT AND REINVESTMENT IN PA-1 AREAS (SUCH AS BROOKLAWN BOROUGH) SO THAT THE COMMUNITY'S VIABILITY IS MAINTAINED AND, HOPEFULLY, ADVANCED.


THE BROOKLAWN BOROUGH COUNCIL FORMALLY RESOLVED TO EXPLORE WHETHER THE HIGHLIGHTED BLOCKS AND LOTS WITHIN THE BOROUGH MAY POTENTIALLY QUALIFY AS AN "AREA IN NEED OF REDEVELOPMENT" UNDER THE NEW JERSEY LOCAL REDEVELOPMENT AND HOUSING LAW, N.J.S.A. 40A:12A-1 ET SEQ. SPECIFICALLY: BLOCK 117, LOTS 95, 96, 97, 98 & 99; BLOCK 120, LOTS 51, 52, 53, 54 & 55; BLOCK 121, LOTS 16, 17, 18, 19 & 20.

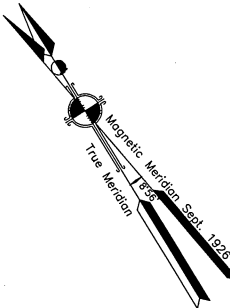
THE BOROUGH COUNCIL FORMALLY REFERRED THE MATTER TO THE PLANNING BOARD AND DIRECTED THE BOARD TO UNDERTAKE THE PRELIMINARY INVESTIGATION REQUIRED BY LAW, AND TO CONDUCT A PUBLIC HEARING, SO AS TO DETERMINE WHETHER THE PROPERTIES WHICH ARE SHADED ON THIS MAP QUALIFY AS "AREAS IN NEED OF REDEVELOPMENT" UNDER THE CRITERIA SET FORTH IN N.J.S.A. 40A:12A-5.

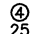
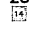

THIS MAP HAS BEEN PREPARED BY A PROFESSIONAL PLANNER RETAINED BY THE PLANNING BOARD PURSUANT TO N.J.S.A. 40A:12A-6, IN ORDER TO AFFORD ALL INTERESTED PERSONS AND AFFECTED PROPERTY OWNERS AN OPPORTUNITY TO VIEW THE LOCATION OF ALL LOTS WHICH ARE THE SUBJECT OF THE BOARD'S CURRENT REDEVELOPMENT INVESTIGATION. THE BOARD'S INVESTIGATION WILL BE HEARD AT A REGULARLY SCHEDULED MEETING OF THE PLANNING BOARD. THE TIME AND DATE OF WHICH WILL BE PUBLISHED TWICE AS REQUIRED BY LAW. IN ADDITION, AFFECTED OWNERS OF THE SUBJECT PROPERTIES WILL RECEIVE INDIVIDUAL NOTICE AT LEAST 10 DAYS PRIOR TO THE HEARING. THE PUBLIC IS INVITED TO ATTEND AND PROVIDE THE PLANNING BOARD WITH ITS ORAL OR WRITTEN COMMENTS.

**IMPORTANT NOTE:** THE REDEVELOPMENT AREA DETERMINATION SHALL AUTHORIZE THE BOROUGH OF BROOKLAWN TO USE ALL OF THOSE POWERS PROVIDED BY THE NEW JERSEY LEGISLATURE FOR USE IN A REDEVELOPMENT AREA, INCLUDING THE POWER OF EMINENT DOMAIN (HEREINAFTER REFERRED TO AS A CONDEMNATION REDEVELOPMENT AREA).

**Legend:**

-  PROPERTIES SUBJECT OF REDEVELOPMENT STUDY AUTHORIZED BY GOVERNING BODY RESOLUTION #88-17 AND RESOLUTION #137-19



- Note:-**
-  Indicates Sheet Number.
  -  Indicates Block Number.
  -  Indicates Lot Number.

2	04/16/20	ADDED NEW RESOLUTION	T.D.	R.S.S.
1	04/20/17	REVISED RESOLUTION NUMBER	T.D.	R.S.S.

REV.	DATE	DESCRIPTION	DRWN.	CHKD.
<b>Redevelopment Study Map</b>				
Block 117, Lots 95, 96, 97, 98 & 99 Block 120, Lots 51, 52, 53, 54 & 55 Block 121, Lots 16, 17, 18, 19 & 20				
Borough of Brooklawn Camden County, New Jersey				
DATE: 11/16/16	DRAWN BY: J.K.	CHKD. BY: R.S.S.	SCALE: 1" = 300'	
PROJECT No. 31-155	FIELD BOOK/PAGE:	SHEET No. 1 OF 1		
<b>ROBERT SCOTT SMITH</b> PROFESSIONAL LAND SURVEYOR NEW JERSEY LICENSE No. 35403 NJ PROFESSIONAL PLANNER No. 4944				



REPRODUCTION, ALTERATION AND AMENDMENT OF THIS PLAN SHALL BE PERFORMED ONLY BY KEL ASSOCIATES, P.A. AND SHALL BE PERFORMED UNDER THE ABSOLUTE DIRECTION OF THE LICENSED PROFESSIONAL WHOSE NAME AND SIGNATURE APPEARS HEREON.

PROFESSIONAL ENGINEERS, LAND SURVEYORS AND PLANNERS  
80 S. WHITE HORSE PINE, BERLIN, NEW JERSEY 08009 (856) 767-6361  
FAX: (856) 753-1091, www.kelassociates.com

DATE \_\_\_\_\_