

Global Green and Healthy Hospitals (GGHH)

Summary Document



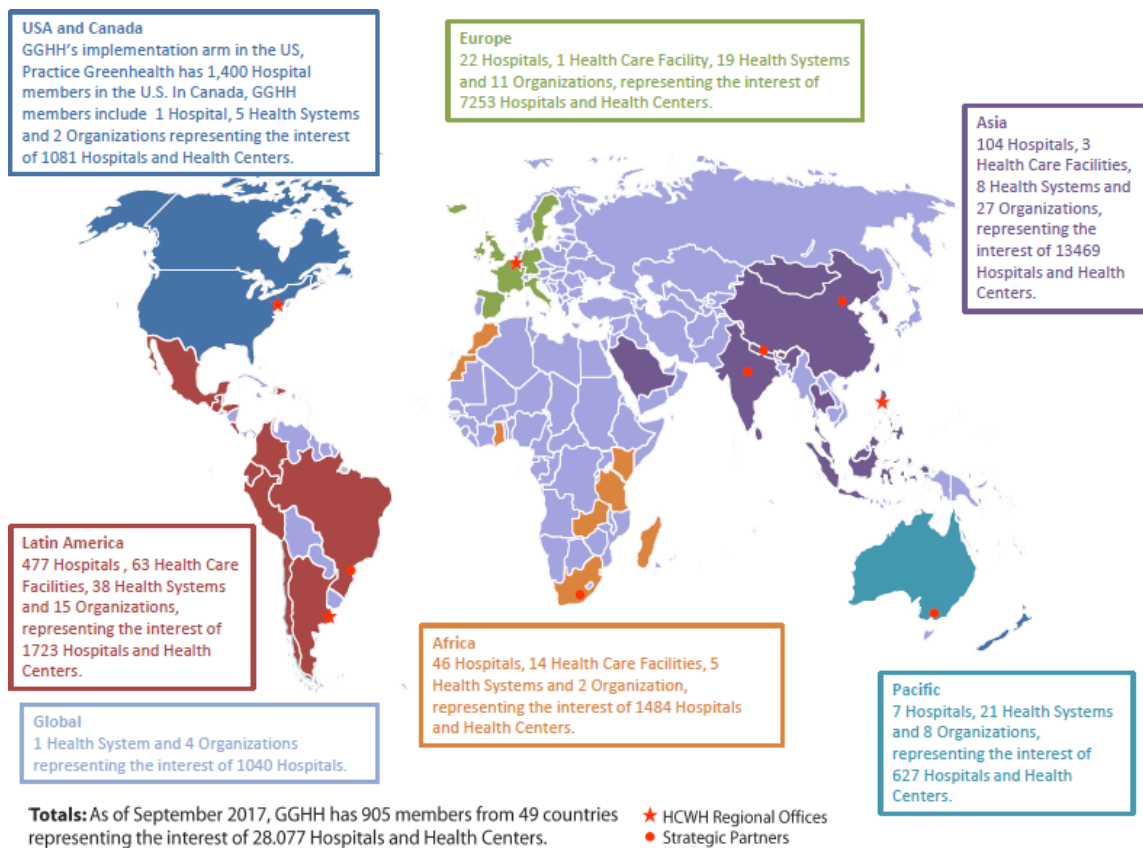
ABOUT GGHH

GGHH is a worldwide network of hospitals, health systems and health organisations committed to reducing the health sector's environmental footprint and advocating for policies that promote environmental and public health.

Aim / Purpose

To create an international community of hospitals, health systems and organisations dedicated to reducing their ecological footprint and promoting public and environmental health.

GGHH is a project of Health Care Without Harm (www.noharm.org). The [Climate and Health Alliance](#) coordinates GGHH in the Pacific Region as Health Care Without Harm's strategic partner in the region.



Membership

There are four categories of GGHH membership. These are hospitals, health systems, health facilities, and health organisations.

As of September 2017, there are 38 members in the Pacific Region (Australia and New Zealand), representing 784 hospitals and health centres.

How does membership work?

- Free of charge
- Potential members complete a letter of intent to join GGHH in which they pledge to work towards at least two of GGHH's ten goals.
- After a health institution becomes a GGHH member, anyone working at that institution can then access all the tools and resources GGHH has available.

THE 10 GOAL FRAMEWORK



Leadership

Prioritize environmental health as a strategic imperative



Chemicals

Substitute harmful chemicals with safer alternatives



Waste

Reduce, treat and safely dispose of healthcare waste



Energy

Implement energy efficiency and clean, renewable energy generation.



Water

Reduce hospital water consumption and supply potable water



Transportation

Improve transportation strategies for patients and staff



Food

Purchase and serve sustainably grown, healthy food



Pharmaceuticals

Prescribe appropriately, safely manage and properly dispose of pharmaceuticals



Buildings

Support green and healthy hospital design and construction



Purchasing

Buy safer and more sustainable products and materials

BENEFITS OF GGHH MEMBERSHIP

GGHH Connect is the multilingual online hub members use to access **GGHH tools and resources**. GGHH Connect is organised around the 10 GGHH goals, with an online community for each goal area.

Tools and Resources include:

Discussion Forums

- A space for members to meet virtually to ask questions, share experiences, and collaborate
- There is a discussion forum for each goal area

Hippocrates Data Centre

- A portal containing online data management tools designed to measure member's environmental impacts, reduction targets and progress.
- Tools provide visual graphs and charts to allow communication of progress and opportunities.
- Data collection tools are currently available for waste, energy and climate.

Guidance Documents

- Comprehensive technical guides providing tools, case studies, actions and strategies for GGHH members to work on to reduce their environmental footprint.
- Currently available for Energy, Water, Waste and Buildings

Experts

- Available to answer questions, provide advice, point members to resources to inform their work in each of the 10 GGHH goals.

Case Studies

- GGHH encourages members to share examples of their work through case studies
- These highlight their success and encourage other members to follow their example.
- A case study template is available from the [GGHH website](#).
- GGHH staff are available to help draft and edit these case studies.
- The [GGHH case study](#) library is available from the GGHH website.

GGHH Webinar Series

- GGHH offers, educational & interactive monthly webinars on topics from the GGHH sustainability goals, to current events of interest, to important research & publications.
- Members and non-members can register and join a webinar, free of charge.
- Past webinars are available from the [GGHH website](#).

GGHH newsletter

- A bi-monthly newsletter via email containing updates including upcoming events, new tools & resources and news from GGHH members from around the globe. [Subscribe here](#).

GREEN HEALTH CHALLENGES

2020 Healthcare Climate Challenge



- Any hospital or health organisation can join the [Challenge](#), and by doing so, they are granted automatic membership with GGHH.
- Based around 3 pillars:
 1. **Mitigation:** reducing their own carbon footprint and fostering low carbon health care
 2. **Resilience:** preparing impacts of extreme weather and the shifting burden of disease
 3. **Leadership:** educating staff and public whilst promoting policies to protect public health from climate change
- Members choose targets, and report on their progress annually towards these targets
- Participants go into the running to receive international recognition through the annual [Climate Champion Awards](#)



Green
Health
Challenges

Waste Challenge and Energy Challenge

- Launched in 2017, [the Challenges](#) are a data-driven initiative, designed to help healthcare organizations commit to sustainability goals and track their own environmental projects and efforts.
- Members pick and choose their goals according to their capabilities and resources, so the Challenges are accessible to organisations of all sizes and levels of sustainability experience
- Collectively members' participation sends a powerful message to hospitals and health systems everywhere that we can achieve environmentally sustainable health care.
- By joining a Challenge, members have the chance to be recognised in the international [Green Health Awards](#)

GGHH CONTACTS

Global Team

- Josh Karliner – International Director of Program and Strategy (HCWH)
- Scott Slotterback – International Technical Director for Climate Change (HCWH)
- Nick Thorp – GGHH Global Community Manager (HCWH)



Email: globalnetwork@hcwh.org

Australia/New Zealand

- Fiona Armstrong - Executive Director (CAHA)
- Carol Behne – Sustainable Healthcare Programs Manager (CAHA)



Email: gghh@caha.org.au

