



# Draw My CA Community Training

[WeDrawTheLinesCA.org](http://WeDrawTheLinesCA.org)



# Reminder—No Public Input Will Be Taken Today

**Per California Government Code Section 8253(a)(3)--** Commission members and staff may not communicate with or receive communications about redistricting matters from anyone outside of a public hearing. Therefore, the Commission will not be taking any public input during these educational presentations.

To provide public input, please visit the Commission's website at: [WeDrawTheLinesCA.org](http://WeDrawTheLinesCA.org).



# California Citizens Redistricting Commission

- ▶ Why is redistricting important?
- ▶ Why should you be involved?
- ▶ Your role in the process

Redistricting has been used at times to exclude communities from political power. By fully participating in and monitoring the upcoming redistricting process, more communities may have a better opportunity to elect candidates of their choice who will voice their needs and interests.



*Your Voice  
Your Choice*

# How Redistricting Affects You

## Power to the People



## Champion Your Issues



## Funding Priorities



## Community Boundaries



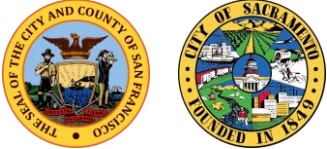
# Different Redistricting Efforts



**State**—Congressional, State Senate, State Assembly, and Board of Equalization.



**Counties**—58 counties, some with their own process.



**Cities**—482 cities, some with their own process.



**School Districts**—1037 school districts, some with their own process.

**Other Redistricting Efforts**—water districts, community college districts, etc.



# 6 Line Drawing Criteria by Order

The Commission must follow these weighted criteria in this order when drawing district maps:

<b>1</b> <b>Equal Population</b> Districts must be of equal population to comply with the US Constitution.	<b>2</b> <b>Voting Rights Act</b> Districts must comply with the Voting Rights Act to ensure that minorities have an equal opportunity to elect representatives of their choice.	<b>3</b> <b>Contiguity</b> Districts must be drawn so that all parts of the district are connected to each other.
<b>4</b> <b>Communities of Interest</b> Districts must minimize the division of cities, counties, neighborhoods, and communities of interest to the extent possible	<b>5</b> <b>Geographically Compact</b> Districts should be geographically compact such that nearby areas of population are not bypassed for more distant populations. This requirement refers to density, not shape.	<b>6</b> <b>Nesting Districts</b> Where practicable each Senate District should be comprised of two complete and adjacent Assembly Districts and Board of Equalization districts shall be composed of 10 complete and adjacent State Senate Districts.

In addition, the place of residence of any incumbent or political candidate may not be considered in the creation of a map, and districts may not be drawn for the purpose of favoring or discriminating against an incumbent, political candidate, or political party.

# Communities of Interest (COI)

- ▶ **Communities of Interest (COI)**--A community of interest is a concentrated population which shares common social and economic interests that should be included within a single district for purposes of its effective and fair representation.
- ▶ Examples include culture, areas in which the people share similar living standards, use the same transportation facilities, have similar work opportunities, or have access to the same media.
- ▶ People can belong to multiple communities of interest.
- ▶ Community of Interest is not the same as a district but are key building blocks of districts.





# Participating in the Process

1



**DESCRIBE**  
your community

2



**DRAW**  
your community on a map

3



**SEND**  
your testimony directly to  
the Commission



**Provide your input today at:**  
[DrawMyCACommunity.org](https://DrawMyCACommunity.org)







# Getting Started: DrawMyCACommunity.org


9

 Languages 



Welcome to Draw My CA Community!






### Getting started

LOGIN

CONTINUE AS GUEST

Need an account? [Sign up here.](#)



**If you log in,** you will be able to save a draft of your work to return to later and you will be able to view any community you have already submitted to the Commission.

**If you continue as a guest,** you do not need to create an account or log in, but you will not be able to save your work to return to later. Guest users can create an account or log in to their pre-existing account at any time.

## My Community

### 1. Describe your community ⓘ



Give your community a name\*

Required

Tell us about your community. What are your shared interests? What brings you together? What is important to your community?\*

Required

Are there nearby areas you want to be in a district with?  
Nearby areas you don't want to be in a district with?  
Why or why not?

Is there anything else you can tell us about your community?

### 2. Draw your community



# Describe Your Community

10

What are your shared interests?

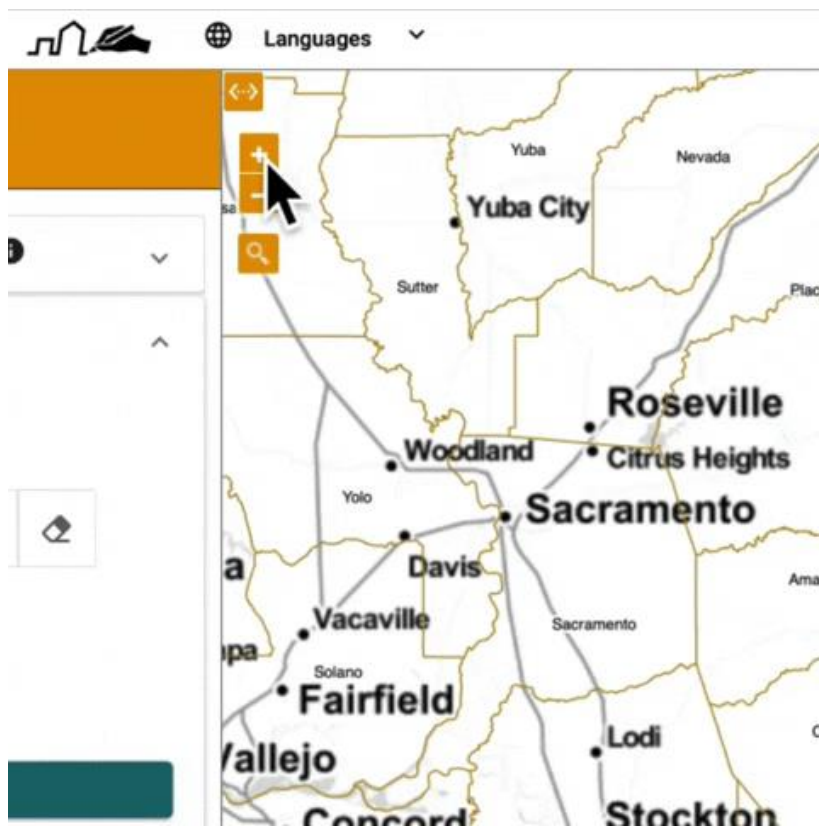
What is important to your community?

Are there nearby areas you don't want to be in a district with?

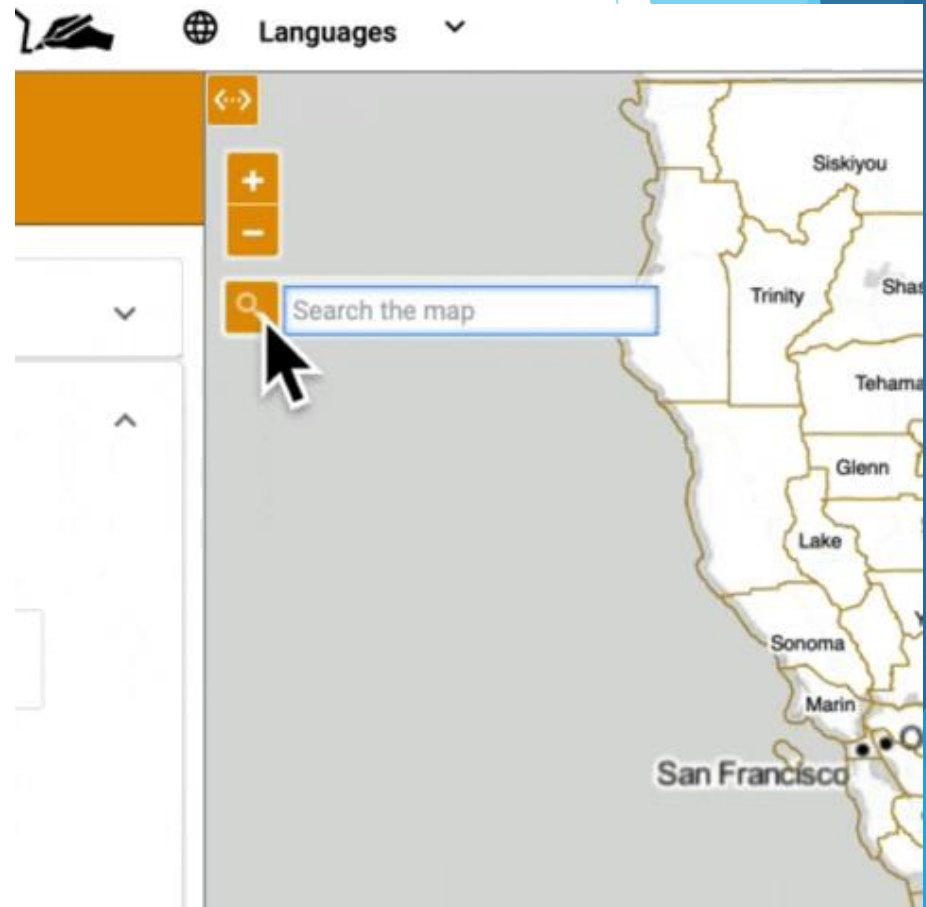
Are there nearby areas you want to be in a district with?

# Draw Your Community

## Zooming In/Out



## Searching



# Draw Your Community

## Example Drawing Layer

12

Move Map

Add by Clicking

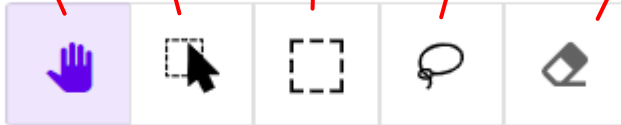
Add by Rectangle

Add by Freehand

Remove Area

## 2. Draw your community

Drawing tools



Drawing layer



Counties

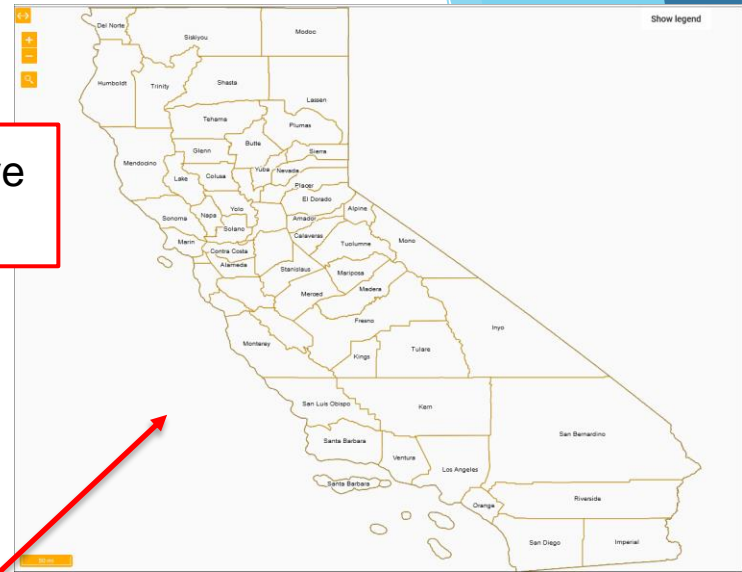
Choose drawing layer?

Basemap style

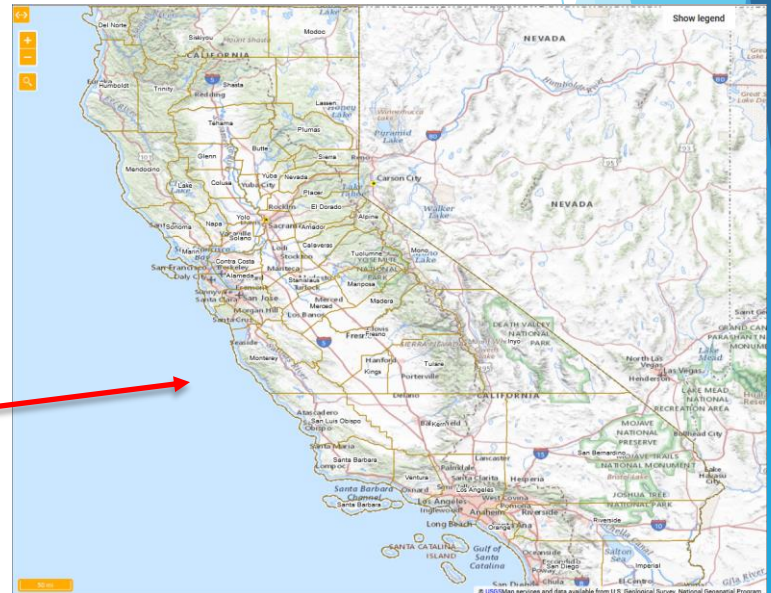


Counties

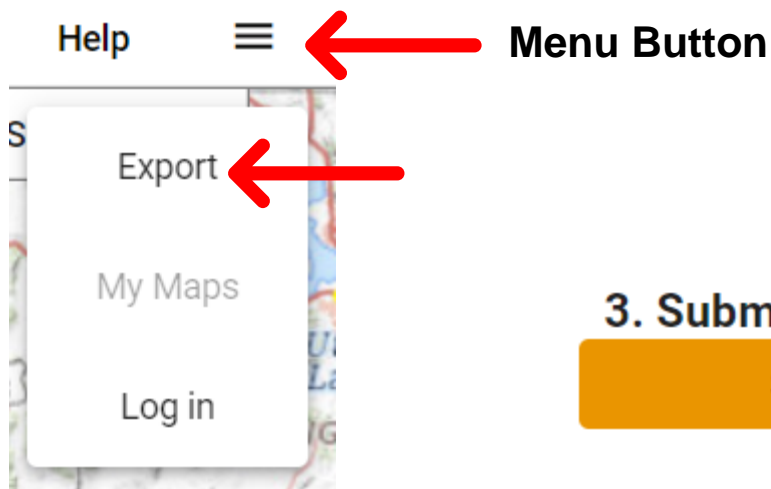
Colorful



## Example Basemap



# Exporting, Saving and Submitting Your Input



## 3. Submit your community

Save

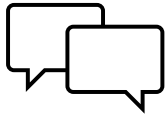
Submit



# How to Get More Assistance



Tutorial



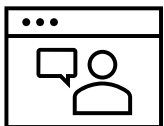
Chat with Tech Support



[User Guides](#)



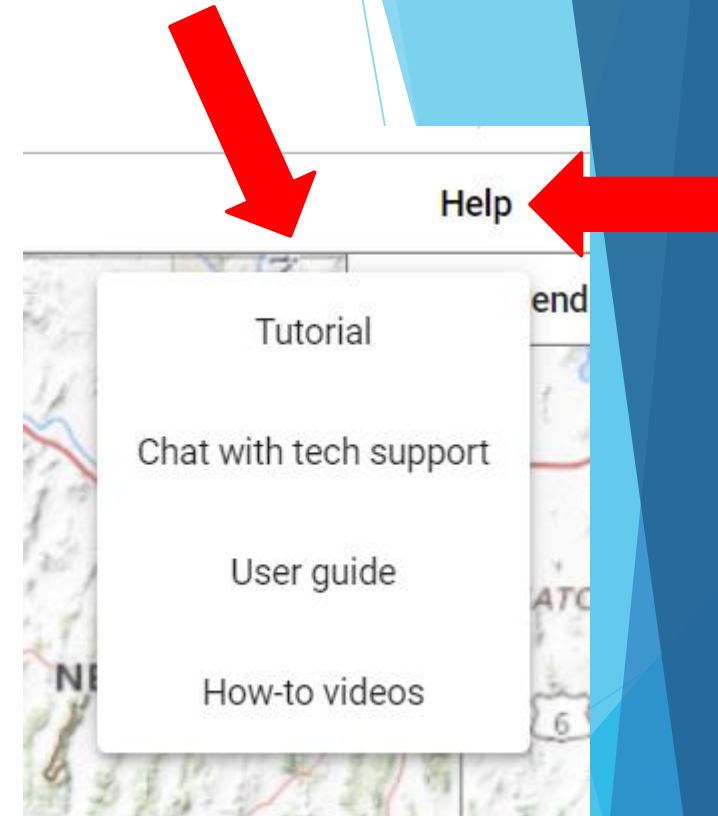
[How-To Videos](#)



[Sign Up for a Virtual Appointment](#)



Call the helpline at (510) 280-3305

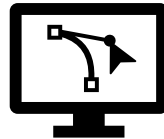


# In Person Assistance: Redistricting Access Centers

- [Fresno](#)
- [Long Beach](#)
- [Oakland](#)
- [Sacramento](#)
- [San Bernardino](#)
- [San Diego](#)



Publicly accessible computers



Redistricting software developed by the Statewide Database.



Staff available to support the public

**Appointments are required to visit a Redistricting Access Center**



See more on our [flyer](#) or at:

[https://statewidedatabase.org/redistricting\\_access\\_centers/](https://statewidedatabase.org/redistricting_access_centers/)



# Help Spread the Word

16



## SUBSCRIBE TO OUR MAILING LIST AND SOCIAL MEDIA TOOLKIT

Receive e-blasts and the Commission's weekly social media toolkit to help us spread the word.

[https://www.wedrawthelinesca.org/sign\\_up](https://www.wedrawthelinesca.org/sign_up)



## HOST A VIEWING PARTY

Gather members, constituents and community to watch a Commission meeting, Redistricting Basics video or COI Tool Training Video

[https://www.youtube.com/channel/UCMKfuZnixpNCxte\\_Qh-Me4Q](https://www.youtube.com/channel/UCMKfuZnixpNCxte_Qh-Me4Q)

<https://www.youtube.com/channel/UCfTVZHU73Ore3jflIfCfcPg>



## LIKE US, FOLLOW US, SUBSCRIBE

Follow us on social media  
(Facebook/Twitter/Instagram/Linkedin/YouTube).

@WeDrawTheLinesCA



## SPREAD THE WORD

Share the Commission's materials in 14 languages. Help us get input from Californians who speak any language from Arabic and Armenian to Tagalog and Vietnamese.

[https://www.wedrawthelinesca.org/outreach\\_materials](https://www.wedrawthelinesca.org/outreach_materials)

[www.WeDrawTheLinesCA.org](http://www.WeDrawTheLinesCA.org)



# Reminder—No Public Input Will Be Taken Today

**Per California Government Code Section 8253(a)(3)--** Commission members and staff may not communicate with or receive communications about redistricting matters from anyone outside of a public hearing. Therefore, the Commission will not be taking any public input during these presentations.

To provide public input, please visit the Commission's website at: [WeDrawTheLinesCA.org](http://WeDrawTheLinesCA.org).



# Contact Us

To request an informational session, please contact the Commission.

**California Citizens Redistricting Commission**  
**721 Capitol Mall, Suite 260**  
**Sacramento, CA 95814**  
**(916) 323-0323**  
**[Anne.Marx@crc.ca.gov](mailto:Anne.Marx@crc.ca.gov)**

For more information about the Commission, please visit:  
**[WeDrawTheLinesCA.org](http://WeDrawTheLinesCA.org)**



Social Media Handles: @WeDrawTheLinesCA

