

# The Capital Crescent Trail

## What's Happening on the Trail

by Clay Teunis

### Trail Progress

The D.C. portion from Key Bridge to about a mile north of the Arizona Avenue trestle has been paved.

The Maryland portion of the trail from Bethesda Avenue to Little Falls parkway also has been paved and opening ceremonies are being planned. Call the CCCT information line at 202-234-4874 for updated details.

Meanwhile, Arlington County is putting in a waterline from Dalecarlia Reservoir to Chain Bridge that will run under the Capital Crescent Trail. Thus, trail

construction is on hold, probably through all of 1994. That area (from the D.C. line to Chain Bridge) will probably not be open until the spring of 1995.

### Corps of Engineers

At the request of the Corps, Maryland Park and Planning held a hearing in late October to address how best to accommodate Corps traffic crossing the trail.

### 1993 Capital Crescent Trail Tour

On Saturday, Nov. 13, CCCT will sponsor the Capital Crescent Trail Tour, a non-competitive walk

and bike tour of the trail corridor and Rock Creek Park.

The event will consist of a 4 mile walk and a 17 mile bike ride beginning and ending at Bethesda Pool. A 6 mile hike and 2 mile fun walk will also be offered showcasing the CCCT right-of-way between Bethesda and Silver Spring.

The 21 mile tour and 6-mile walk will use portions of the corridor still containing ties and rails, so sturdy shoes are suggested. The 2 mile walk will be on a hard surfaced trail and sidewalks. For more information or registration contact Ursula Lemanski at 301-989-0216. See you on the trail!

**Continued on page 4**



Photo by Henry Bartholomot

**Before: The train trestle over Bradley Boulevard in Bethesda.**

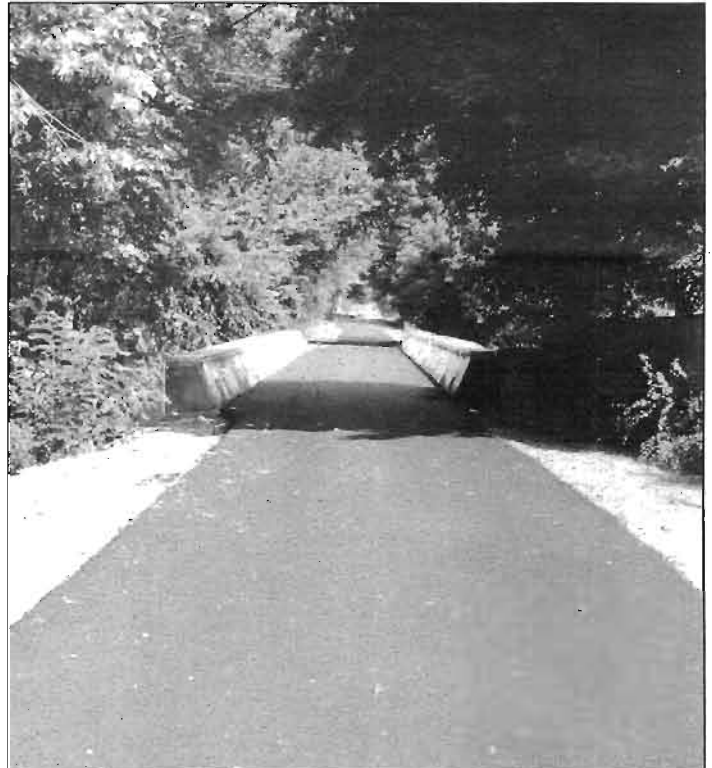


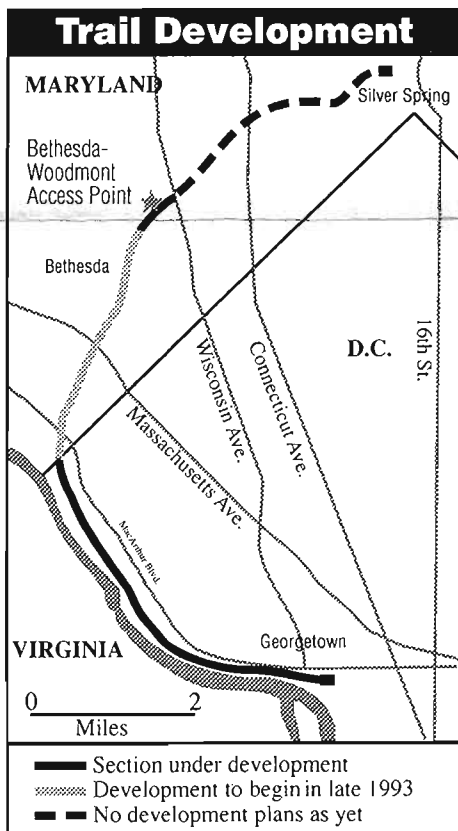
Photo by Clay Teunis

**After: The pavement is ready for 21st century transportation.**



Putting the Capital Crescent Trail to use near Fletchers Boat House.

Photo by Henry Bartholomot



Viewing progress in the District portion of the corridor.

Photo by Clay Teunis

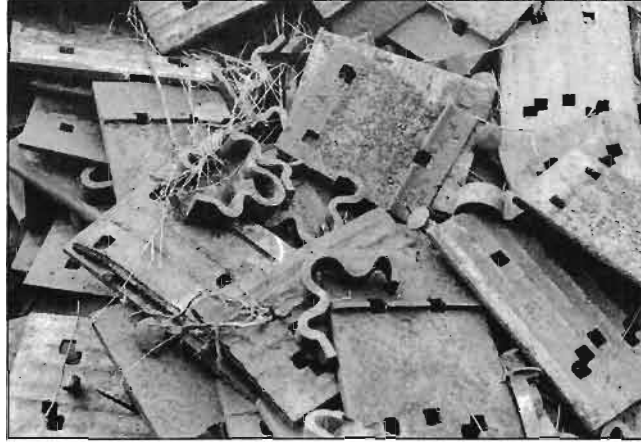
## The Capital Crescent Trail



**Heavy equipment was brought in by contractors to remove rails.**

Photo by Henry Bartholomot.

**For six years volunteers have kept the trail free of debris and overgrowth.**



**Some of the hardware (spikes, steel plates, etc.) removed from the rail bed.**

Photo by Henry Bartholomot.



Photo by Henry Bartholomot.



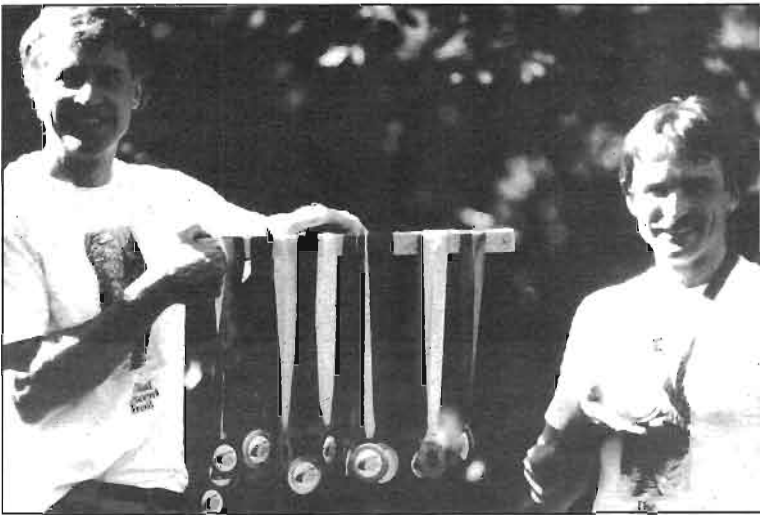
**Rails and ties are stockpiled near Fletcher's Boat House.**

Photo by Henry Bartholomot.



CCT Triathlon: Last year's participants prepare for the start of the event (above). Medals are passed out to the 1992 finishers (below).

Photos by Maria Stenzel



### CCCT Volunteers Needed

Anyone interested in assisting with the 1993 Capital Crescent Trail Tour please contact Ursula Lemanski at 301-989-0216. Help is needed for registration, rest stops, route marking, road marshals and publicity.

Don't forget: You can call us anytime at 202-234-4874 for a recording of meeting dates, upcoming events, or to leave a message.

## YES! I want to help create the Capital Crescent Trail.

Add me to your membership list. Enclosed is a donation for: \$10 \$25 \$50 Other \$ \_\_\_\_\_

All contributions are tax-deductible. (Make check payable to CCCT.)

I know of a that might join the coalition. The name of the group and the contact are: \_\_\_\_\_

I want to help with: \_\_\_\_\_ research \_\_\_\_\_ writing  
\_\_\_\_\_ telephoning \_\_\_\_\_ artwork  
\_\_\_\_\_ leafletting \_\_\_\_\_ event organizing

Name \_\_\_\_\_

Address \_\_\_\_\_

Telephone \_\_\_\_\_(h) \_\_\_\_\_(w)

**Coalition for the Capital Crescent Trail**  
P.O. Box 30703, Bethesda, Md. 20824 Telephone: 202-234-4874

**Editors:** Clay Teunis and Tom Barrett

**Designer:** Mark Wood



P.O. Box 30703  
Bethesda, MD 20824

Non-Profit Org.  
U.S. Postage  
PAID  
Permit #4468  
Wash. D.C.