



THE CRESCENT

THE COALITION FOR THE CAPITAL CRESCENT TRAIL

Summer 2004

Vol. XII No. 5

Friends of the Trail Honored at June 14 Annual Meeting

By Wayne Phyllaier

The CCCT Annual Membership Meeting was held at Elm Street Park in Bethesda on Monday evening, June 14. The event was more picnic than meeting, in keeping with the tradition of past membership meetings. Free food and drink was provided, and approximately 50 members and supporters enjoyed the evening in the park.

CCCT used the event to thank several individuals for their contributions to the Trail. CCCT Chair Ernie Brooks presented plaques as a token of CCCT's appreciation to these trail supporters:

• **Mr. Al Genetti** for his consistent support while Director of DPWT for trail maintenance, projects to provide better trail access, the Rock Creek Trestle project, and for insisting during negotiations of a proposal to dig under the Dalecarlia Tunnel to install a large water pipe that the interests of trail users must be protected.

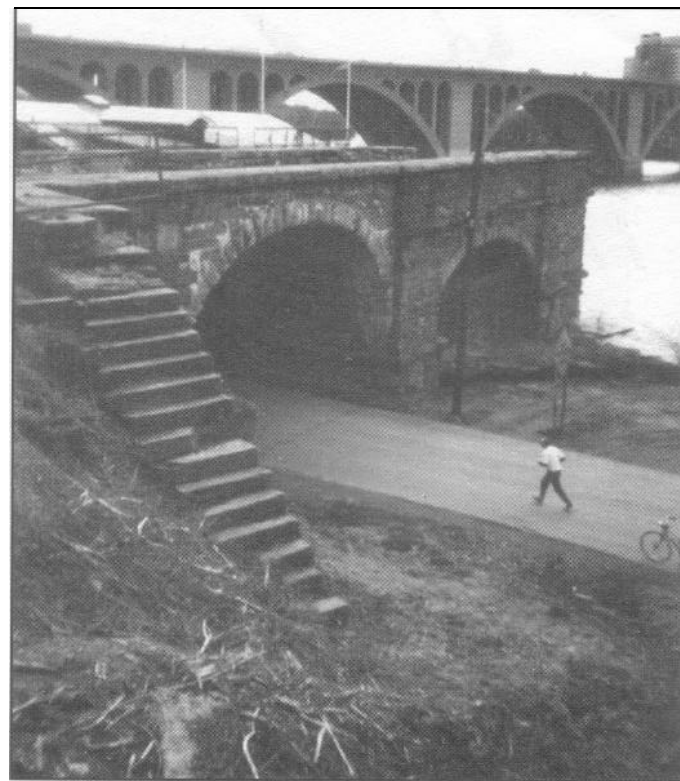
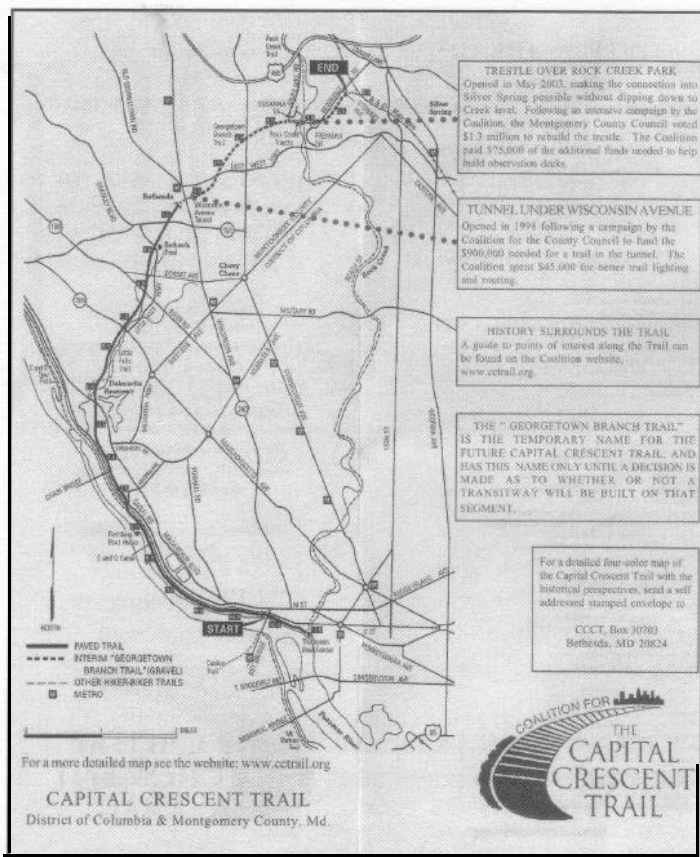
• **Ms. Merle Steiner** for her guidance and support for the Trail as legislative assistant to former Mont. Co. Councilmember Ike Leggett and to Councilmember Nancy Floreen. Merle's understanding of the Council and the legislative process was especially helpful when the CCCT was advocating for the very politically sensitive Rock Creek Trestle. Ike Leggett was in attendance to help honor Merle, and he remarked on her effectiveness in bringing the concerns of trail supporters to the attention of the County Council.

• **Mr. Larry Schuette** for his leadership in the Defenders of the Potomac River Parkland to fight to protect the Trail from the severe impact the proposed Georgetown University Boathouse will have on the Georgetown trailhead.

• **Mr. Dave Putnam**, retiring CCCT Board Member, for his service as a board member for many years, and in particular for creating the CCCT website and for maintaining it for six years. This website averages 170 visitors daily. Many first find their way to the Trail by this website, and then go on to become trail supporters. Dave's gift of the website is a significant contribution to the Trail.

The new Board was affirmed for the next 2004-2005 Board Year. Returning to the Board are: Pat Baptiste, Ernie Brooks, John Campanile, John Dugger, Jenny-Sue Dunner, Isaac Hantman, Jennifer Longworth, Andy O'Hare, Wayne Phyllaier, and Charlie Wellander. Peter Gray was welcomed to the Board as a new member this year

Action Alert! Your comments are needed.
See page 4, GU Boathouse Update.



The Capital Crescent Trail at the Georgetown Aqueduct.

The Coalition For The Capital Crescent Trail Board Members 2002-03

Officers At-Large

Ernie Brooks, Chair
John Campanile, Vice-Chair
Isaac Hantman, Vice-Chair
Wayne Phyllaier, Treasurer
Jennifer Longworth, Secretary
Charlie Wellander, Asst. to the Treasurer

Pat Baptiste
John Dugger
Jennie-Sue Dunner
Peter Gray
Andy O'Hare

Visit our website:
www.cctrail.org
for trail updates
and events.

- m m -

Editor:
John Campanile

Contributing Editors:
Ernie Brooks
Wayne Phyllaier

Design:
Jane Shelton

Distribution:
Ellen Jones
Washington Area Bicyclist

CONTACT THE CCCT:
contact@cctrail.org
OR
202-234-4874

Printed by Ecoprint
Silver Spring, MD
using recycled paper
and soy based ink.

The Crescent is published three times a board year (June-June) by the Coalition for the Capital Crescent Trail (CCCT), P.O. Box 30703, Bethesda, MD 20824, phone (202) 234-4874. CCCT is a non-profit citizens' group promoting development of the 11.2 mile rail-to-trail conversion from Georgetown, D.C. to Silver Spring, MD for multi-purpose, recreational use.

@copyright 2004 Coalition for The Capital Crescent Trail

Reproduction of information in *The Crescent* for non-profit use encouraged. Please use with attribution.

We request that all entries should be sent to the post office box listed above. Submissions should be sent via e-mail to: **jcampa213@fox.com**, or by mail to CCCT.

COALITION FOR THE CAPITAL CRESCENT TRAIL STATEMENT OF AFFAIRS FOR THE YEAR 2003

The By-Laws of the Coalition direct that the Chair submit to the Board in April and to the membership in June a Statement of Affairs

Among the most important achievements for the Coalition was the opening of the trestle over Rock Creek Park in May 2003. The Coalition had contributed \$75,000 to this project to help provide a widening of the center section of the trestle, providing an "observation deck" in that area. I am happy to report that the deck widening has proved to be very successful, and the Coalition has gotten high praise for its involvement in getting that feature implemented.

The opening of the trestle over Rock Creek has resulted in a brighter light being shone on the section of the trail to the east of Rock Creek. Issues on that section include trail degeneration due to erosion problems, and an unsafe on-street route from the end of the interim trail at Stewart Ave. into downtown Silver Spring. Representatives of the Coalition have met and corresponded with County officials responsible for that section of the trail on several occasions in 2003, and I can report that that effort is beginning to pay off. Recently the County has done a major regrading of the deteriorated sections, and has indicated that they are willing to look at measures to provide more permanent solutions to the underlying problems. In addition, the County has begun the process needed to provide a safer on-street route. That project is slated for completion this summer, and will be a major accomplishment in getting the trail onto a better alignment into Silver Spring.

As always, access to the trail is a continuing concern, and in 2003 a new access at Bradley Boulevard was completed. The Coalition had lobbied the County for this, and other, additional access points over the past several years, and it is good to finally see these concerns addressed.

In 2003 the Coalition became aware of the serious negative impact that a proposed Georgetown University Boathouse (GUB) would have on the gateway to the trail in Georgetown. Accordingly the Coalition joined the Defenders of Potomac River Parkland in opposing construction of this enormous structure along the trail. Our main effort in this regard has been to question the legitimacy of the land swap between the National Park Service and Georgetown University that will be needed to facilitate this project. We have also questioned the need for a building of the size in the current GUB design, if they are allowed to build adjacent to the trail. Our efforts in trying to protect the trail from this intrusion are continuing.

The Coalition has testified at numerous County hearings for increased budgets for both Capital improvements and additional maintenance funds during 2003.

Our ongoing program of promoting safety on the Trail has continued in 2003, through use of our Newsletter, Website, and Trail Bulletin Boards to spread the dual message of courtesy and safety. We held several events on the Trail where Board members gave away whistles, and installed free bells on bicycles of Trail users.

The Coalition continues to remain in good fiscal shape due to the generosity of our nearly 2000 members. In 2003 we grew our net assets from \$58K at the start of the year, to \$91K by years end. This will allow us to help support the measures that we advocate for with the County and NPS.

Respectfully submitted,

Ernie Brooks

CCCT Chair



The Rock Creek Trestle, late 70's

Action Alert: GU Boathouse Update

By Ernie Brooks

On December 11 the DC Zoning Commission approved the Waterfront Zoning for the parcel of land near the southern terminus of the CCT on which Georgetown University (GU) plans to build their super-sized Boathouse. In order to accommodate the enormous size, the ZC also approved two special exceptions, and a Zoning Variance. This approval would allow GU to build a boathouse some 40% bigger, and 35% taller than had been approved by a 1998 Memorandum of Agreement between the involved parties, which was a requirement of the Historical Review process. In order to tie up this loose end, the National Park Service (NPS) is revising the MOA to fit the larger boathouse design.

As readers of the Fall 2003 Newsletter (now available online, www.cctrail.org) will recall, the Coalition opposed the Boathouse approval due to its negative impacts on both the CCT, and the C&O Canal National Historic Park. In particular, the size of the structure, and its 12' wide access road through the CCT Right-of-way, will push the edge of the trail's pavement up against the canal embankment. In addition, the 54' tall and 300' long structure will crowd the trail along one of its busiest stretches.

One reason the NPS gives for allowing GU to build at this location is the fact that GU owns a parcel some 3/4 of a mile further up the CCT, with access rights through the CCT ROW from the end of Water Street to that parcel. NPS will be getting that parcel and removing the long access easement, in exchange for the proposed site and its shorter access easement. Ignoring the suspicious nature of GU's acquisition of the upstream parcel to begin with, this exchange might seem to be a good deal for the Trail. The problem with that reasoning is that the upstream site is essentially unbuildable for anything (it was described that way by an appraisal for the Environmental Assessment required for the land swap), and laughable as a site for a boathouse.

What Can Be Done

The NPS dropped the ball back in 1989 when they allowed GU to get the upstream site and its easement, and **we'd really like to see them do a better job of protecting the CCT & the C&O Canal at this point in time.** What they seem to fail to realize, or choose to ignore, is that they are in an incredibly strong bargaining position regarding the land swap. If GU wants a bigger boathouse than what is appropriate for the proposed site, NPS could consider swapping a piece of the riverfront property they own between 34th Street and Key Bridge. The land along that stretch suffers none of the negatives associated with the currently proposed site.

To help protect the CCT in this area, trail users should send an email to Terry Carlstrom, the NPS Regional Director, at terry_carlstrom@nps.gov, as well as your Congressional representatives. Remind them that GU will be happy to swap its upstream parcel for the proposed site, even if they don't get everything they want in their boathouse. You should also let them know that much more suitable sites exist along the noted section of Water Street.

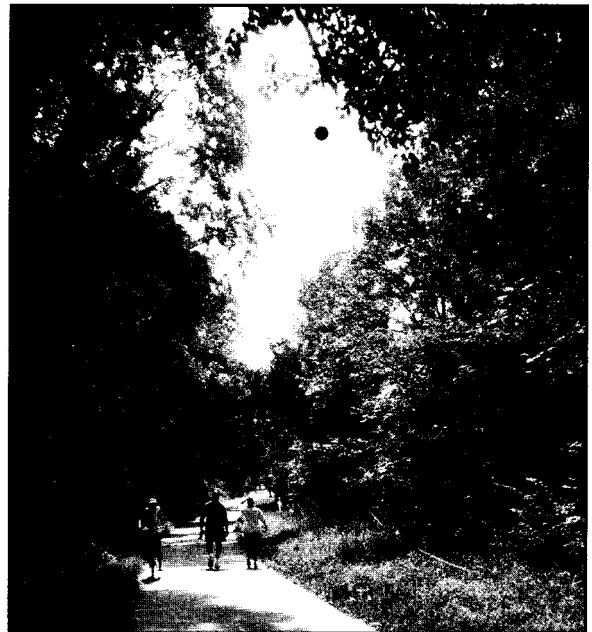


Photo shows location of the proposed boathouse. The balloon at top center represents the peak of boathouse's center section roof. The balloon is 3-feet in diameter, and its position indicates how tall the structure is relative to the CCT. Photo by Dave Winer

Safety on the Trail

Summertime -- and the living is easy. . .

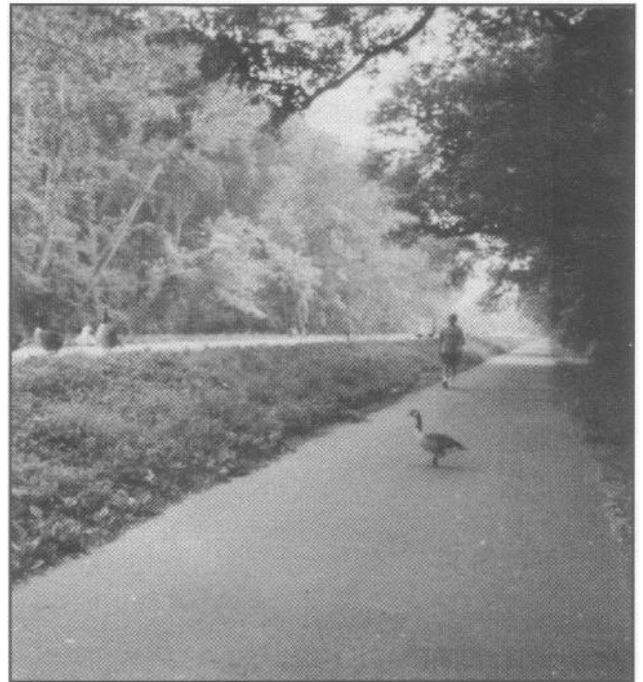
Unless you happen to be a parent with small children, a walker or jogger, elderly, or even hearing-impaired.

These are among the trail users we hear from that tell us stories of bicyclists and rollerbladers who pass without giving any audible warning. Besides being **required by law in** Montgomery County and D.C., audible warning is important for safety and is the courteous thing to do, appreciated by those being overtaken.

The Capital Crescent Trail has been an enormous success and can be very crowded with users of all sorts and manner of transportation. Toddlers and children present a whole new set of concerns, as their actions can be unpredictable.

For almost as long as the trail has been in existence, the Coalition for the Capital Crescent Trail has led efforts to create this wonderful greenway and to achieve the best possible amenities to make the Trail safe and attractive.

Please take a moment to review the following common-sense guidelines when you're on this or any other trail:



Trail safety and courtesy means:

ALL USERS should stay to the right **side of the trail** except when passing. Passing other trail users to their left, allowing at least two feet clearance.

Always look ahead and behind before passing.

Give an **audible voice or bell warning** at least two seconds before passing.

Travel at reasonable speed in a consistent and predictable manner.

Keep all pets on a short leash (required by law).

Move off the trail when stopped to allow others to pass;

Yield to others when entering or crossing the trail.

Use lights and reflectors after dusk or before dawn.

Calendar of Events

CCCT Board Monthly Meeting -

There will be no meeting in August.

The next CCCT regular meeting will be on Monday, Sept. 13, 7-9 p.m. IN SILVER SPRING, at the Silver Spring Services Center at 8818 Georgia Avenue. This is just one block up Georgia Avenue from the M-NCPPC (Park and Planning) Building. Free parking is available and it is also an easy walk from the Silver Spring metro station. The meeting room is tentative at this time, so please check our website at www.cctrail.org or our telephone hotline at 202-234-4874, mailbox 8, to confirm the meeting location.

We will return to our usual meeting location at the Bethesda Library on Arlington Blvd. for our October meeting. While most meetings will be held in Bethesda, CCCT will hold occasional meetings in Silver Spring. We will post meeting locations well in advance on our website and telephone hotline.

Along The Trail..

5 YEARS AGO ...

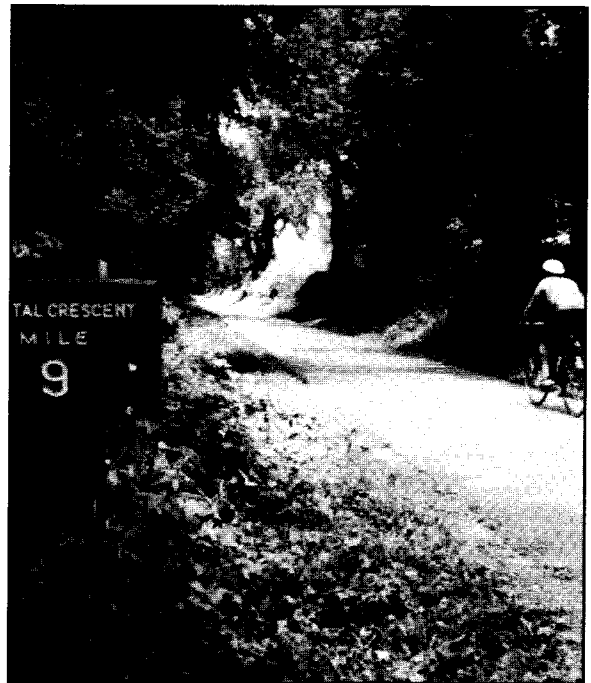
The Maryland-National Capital Park & Planning Commission begins a trail alignment study for the Capital Crescent Trail and the Metropolitan Branch Trail through Silver Spring.

10 YEARS AGO ...

Montgomery County Council establishes a nine member Interim Trail Task Force to consider implementation of interim hiker-biker trail between Bethesda and Silver Spring. CCCT Board member Henri Bartholomot is named as Chair. The task force is given 60 days to prepare report.

15 YEARS AGO ...

The Maryland-National Capital Park & Planning Commission publishes its final draft Georgetown Branch Master Plan Amendment which lays out proposed transit way and trail alignment options.



Montgomery County budget supports the Trail

By Wayne Phyllaier

This May the Montgomery County Council passed a new budget that has some good news for the Trail.

The Council inserted \$50K into the FY05 Capital Budget to build the connecting path between Stewart Avenue and Kansas Avenue, at the east end of the Interim CCT. This "Rosemary Hills Connector" will allow the Georgetown Branch on-road bike path to be taken off busy Brookville Road, to make the connection to downtown Silver Spring much safer and more direct. DPWT also has Capital funds to construct connecting paths between the CCT and the north side Bradley Blvd. sidewalk in Bethesda next year.

The Council added \$50K to the FY05 Operating Budget for DPWT trails maintenance, which includes maintenance of the Interim CCT. The Council also increased funding to the Parks Dept. above the County Executive's request, to reduce the negative impact of proposed budget cuts on the maintenance of countywide parks and trails, including the CCT.

We had identified some serious problems with the proposed budget in our Spring Crescent. The County Council is to be commended for making such a strong effort to address these issues in this very difficult budget year.



DIAL UP TRAIL CONDITIONS AND EVENTS

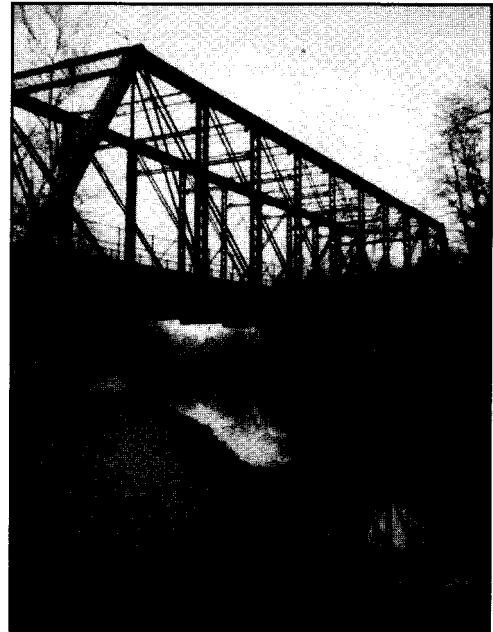
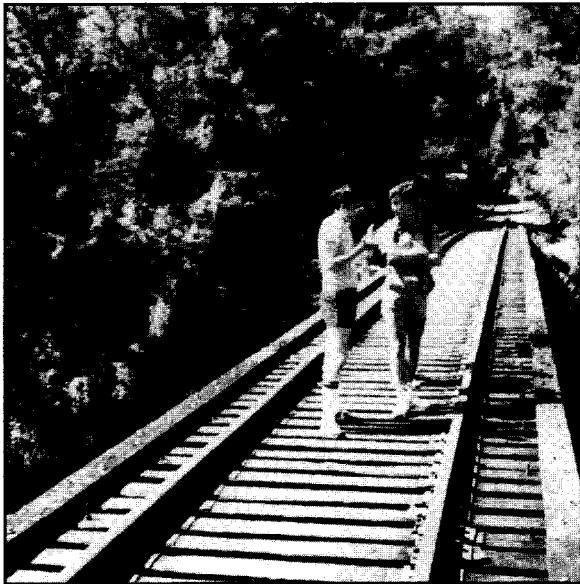
We can't do it without you! So be the Coalition's eyes and ears the next time you're out on the Trail - Call the CCCT Information Line at 202-234-4874 and press box "8." Leave a message on trail conditions you've encountered, or on any issue which might impact the Trail. The hotline message also provides trail users with regular updates on trail conditions and Coalition events.

If you're new to the Capital Crescent Trail, leave your name and address to receive a membership brochure and our latest newsletter. After consideration, we hope you'll support the CCT and become a member of the Coalition

CCCT INFORMATION LINE, 202-234-4874

Use your touch-tone phone to access one of our mailboxes:

- | | |
|----------------------------|---------------------------|
| 1: Background of the CCT | 5: Volunteer activities |
| 2: Coalition meeting dates | 6: Other messages |
| 3: Membership information | 7: [Inactive] |
| 4: Obtain a CCT map | 8: Trail hotline & events |



The Arizona Avenue trestle, as it appeared in the mid-'80's (top) and as it appears from the C&O Canal today.

IS IT TIME TO RENEW YOUR MEMBERSHIP? HERE'S YOUR CHANCE!

YES! I want to help complete the Capital Crescent Trail and make it safer and more pleasant to use!

Name(s) _____ (H) _____ (W) _____
 Address _____ Apt. _____
 City _____ State _____ Zip _____ E-mail _____

N E W M E M B E R R E N E W I N G M E M B E R

Individual Contributions:

- ☐ \$10 Basic Individual
- ☐ **\$30 Contributor**
- ☐ \$60 Path Finder
- ☐ \$100 Patron
- ☐ \$200 Trail Blazer
- ☐ \$500 Benefactor

A DETAILED FOUR-COLOR MAP OF THE CAPITAL CRESCENT TRAIL WITH HISTORICAL PERSPECTIVES IS FREE TO ALL NEW MEMBERS.

DONORS OF \$60 OR MORE WILL RECEIVE A CCCT T-SHIRT UPON REQUEST (IF DESIRED, PLEASE CIRCLE SIZE: S M L XL).

Make your tax-deductible contribution checks payable to: The Coalition for the Capital Crescent Trail.
 Mail to CCCT, P.O. Box 30703, Bethesda, MD. 2082

Thanks for your efforts on behalf of the Trail! Here's an additional contribution of \$_____.

Membership is good for one year from the 15th day of the month that you join.

We are an all-volunteer organization. ☐ I am interested in volunteering, contact me for:
☐ Advocacy ☐ Events ☐ Trail Maintenance

We do not share our membership list with any organization except our affiliate organization, the Washington Area Bicyclist Association. CCCT is exempt from federal taxation under section 501 (c)(3) of the IRS Code and is qualified to receive tax-deductible contributions. VISIT OUR WEB SITE, www.cctrail.org, FOR ACTION ALERTS and TRAIL UPDATES.



Trail users interested in developments in Silver Spring should pick up a copy of the Silver Spring Voice, or link to their website (www.silverspringvoice.com), for an article entitled "Bikeway to Where?" On May 21st, the Montgomery County Council voted to approve \$50,000 to construct a connecting path between the Trail's Stewart Avenue terminus, pictured above, to Kansas Avenue. This would provide Silver Spring trail users an easier route to and from the Rosemary Hills neighborhood.

A link to the article is also provided on the CCCT website, www.cctrail.org

CCCT
P.O. Box 30703
Bethesda, MD 20824

Non-Profit Org.
U.S. Postage
PAID
Permit #4468
Wash., DC