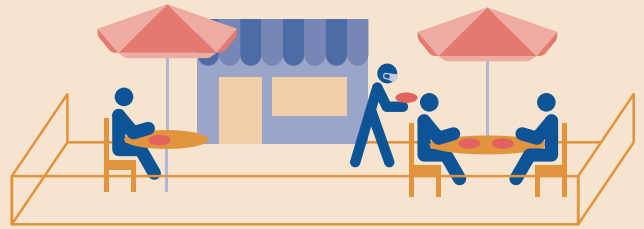




Dining in the Street



What is L.A. Al Fresco?

L.A. Al Fresco is a temporary emergency response program to the COVID-19 pandemic that streamlines review and allows for outdoor dining on sidewalks, parking lots, and streets. The program aims to help local restaurants, bars remain in business and in compliance with public health requirements by increasing the space restaurants, bars have for outdoor dining.

Is it free to apply and participate?

There is no fee to apply or participate. Required traffic safety equipment for on-street dining will be provided for free while supplies last. Installation charges may apply.

How do I apply?

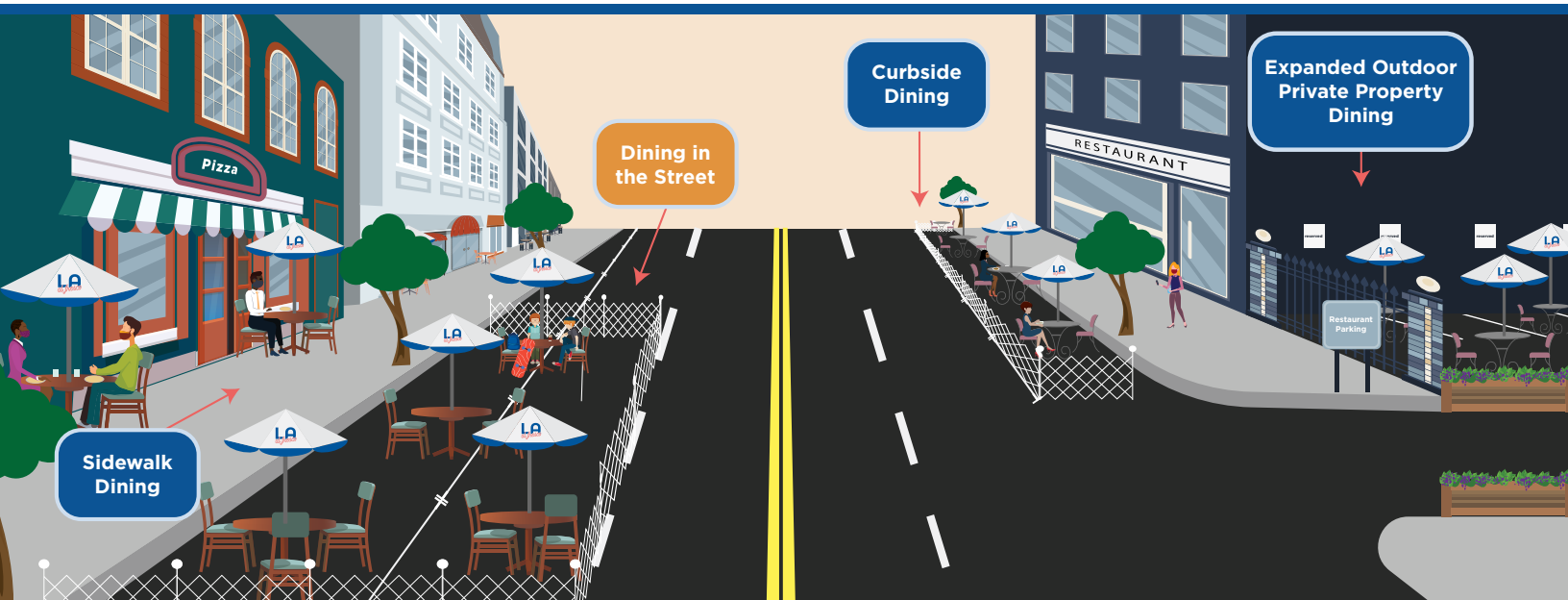
Apply online at corona-virus.la/laalfresco.

Who do I contact with questions?

For application assistance or additional questions, please email alfresco@lacity.org. One-on-one application support is available. For general questions call 311. Find more information and FAQs here: corona-virus.la/laalfresco

Where can I find more information about how to operate safely?

Find information on guidelines and protocols [here](#) and [here](#).



FOR MORE INFORMATION

หากต้องการทราบข้อมูลเพิ่มเติม

alfresco@lacity.org | corona-virus.la/laalfresco | call 311

PARA MÁS INFORMACIÓN

더 자세한 내용은

PARA SA HIGIT PANG IMPORMASYON

詳細情報

欲了解更多信息



LADOT



L.A. Al Fresco is a temporary emergency response program to the COVID-19 pandemic that streamlines review and allows for outdoor dining on sidewalks, parking lots, and streets. The program aims to help local restaurants, bars remain in business and in compliance with public health requirements by increasing the space restaurants, bars have for outdoor dining.

Dining in the Street allows groups of restaurants, bars, or groups of street vendors to create dining or vending areas on the street. These areas may use the on-street parking lane, a vehicle travel lane, or the entire street.

The following areas may be used for dining in the street:

Parking lane closure for pedestrian access or for dining

- This does not impact the amount of travel lanes on the street but removes all on-street parking in requested closure area

Travel lane closure for dining

- This closure would remove all on street parking in requested closure area and one travel lane

Full street closure

- Street will be completely closed to cars (with the exception of emergency vehicles)

Required traffic safety equipment for on-street dining will be provided for free while supplies last. Installation charges may apply.

Requirements:

- A group of 3+ restaurants, bars, and/or permitted street vendors along a single block. BIDs or Chambers of Commerce are encouraged to apply on behalf of restaurants, bars.
- Restaurants, bars must be licensed in the City of Los Angeles and have a Business Tax Registration Certificate (see how to register [here](#)).
- For restaurants, bars with existing alcohol permits, alcoholic beverages may only be served in the public right-of-way with the approval from the Department of City Planning and the California Department of Alcohol and Beverage Control (ABC).
 - You must obtain a COVID-19 Temporary Catering Authorization from the ABC. More information can be found [here](#).

- Restaurants, bars must have a \$500,000 minimum Liability Insurance policy, \$500,000 Workers' Compensation and Employer's Liability policy, and \$500,000 Liquor Liability Insurance.
- Business Owners agree to defend, indemnify and hold the City of Los Angeles harmless for any loss or liability, including but not limited to, damage or injury related to the encroachments of this temporary authorization.

Participating businesses are responsible for the following:

- Maintaining outdoor dining area in a clean and orderly manner.
- Notifying neighboring businesses and obtaining permission from the property owner.
- Providing own tables, chairs, and other furnishings.
- Adhering to state and local Public Health [guidelines](#).

How to apply:

The application is available online in [English](#) and in [Spanish](#).

- Application will take approximately 20 minutes; please be prepared to upload a diagram of the requested street closure area.
- Application subject to approval by LADOT.
- Please note, this is not a permit but a temporary authorization.
- If you are an individual business interested in applying for a smaller, curbside closure (2 on-street parking spaces adjacent to your business), please visit the Curbside Dining guide.

Site specifications:

Requirements

- Can only be installed on a street with a speed limit of 35mph or less.
- Can only be installed on streets with two travel lanes or less in each direction.
- Sidewalk must be wide enough to provide a 6' clearance for pedestrian and ADA access.

Closure restrictions

- Cannot be requested on streets within two blocks of a Fire Station, Police Station, and/or Hospital.
- Cannot interfere with the visibility of a crosswalk, driveway, or other traffic control devices.

- Cannot interfere with bus operations, building entrances, utilities, and ADA parking (*including Blue ADA parking curb*).
- Cannot interfere with an existing farmer's market unless there is written permission from the farmer's market.
- Cannot conflict with roadway construction projects.
- Cannot be installed in an electric vehicle charging space.
- Cannot be installed within 15' of a fire hydrant.
- Cannot be installed on top of or covering storm grates or utility covers.