

# Miami-Dade County Parks & Public Space Masterplan

---

Mobility and Greenways in Miami-Dade

**Maria Nardi**

Chief of Planning and Design Excellence  
Miami Dade County Parks, Recreation and Open Spaces

parks • public spaces • natural areas • cultural areas • greenways • water trails • streets

---

# The Miami-Dade County parks and open space system Master Plan

A 50-Year, unifying vision for a livable, sustainable Miami-Dade County



---

parks • public spaces • natural areas • cultural areas • greenways • water trails • streets

# A Connected System

Parks

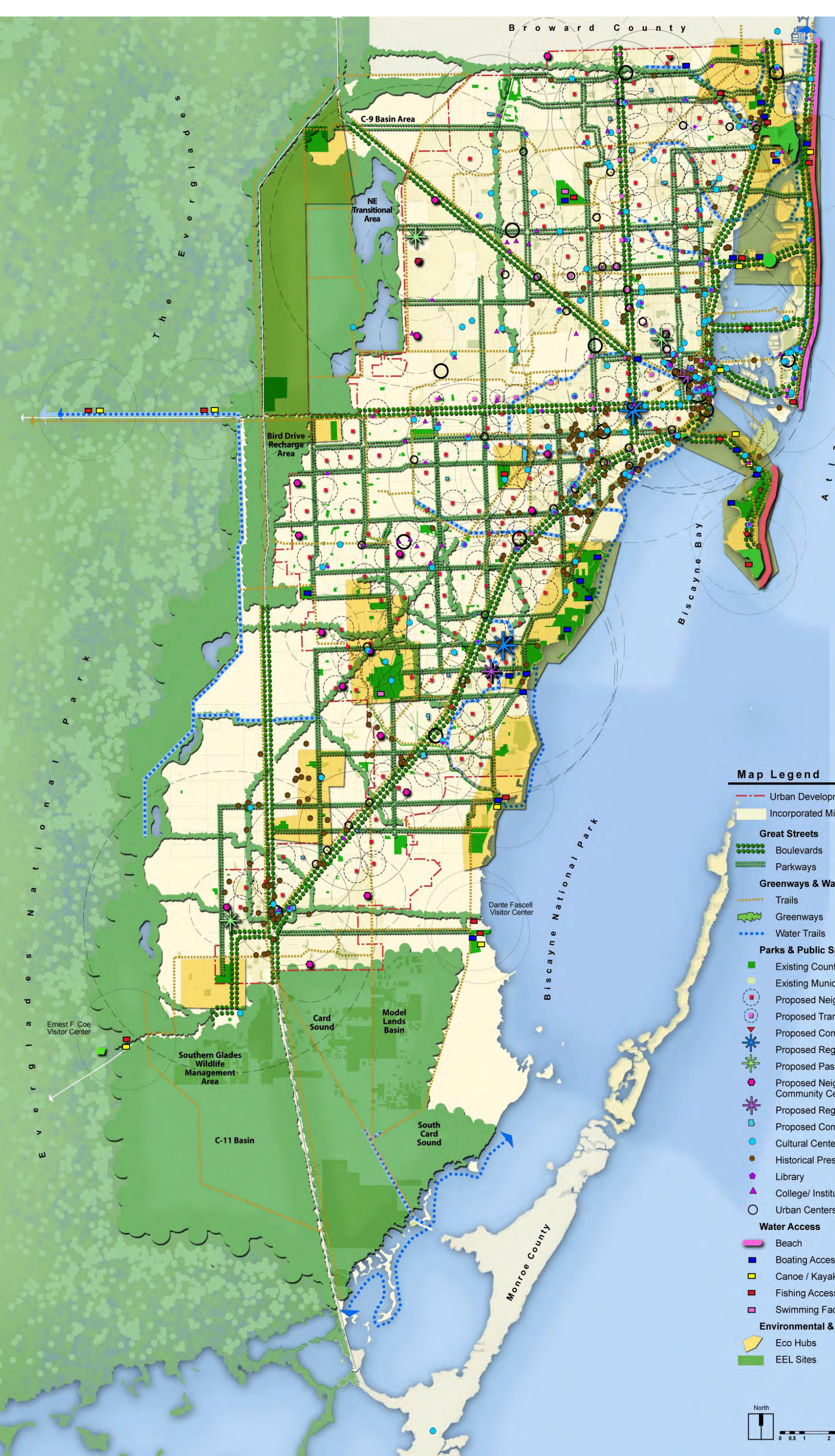
Public Spaces

Natural Cultural Areas

Greenways

Blueways

Complete Streets



# Guiding Principles:

1. Equity
2. Accessibility
3. Seamlessness
4. Sustainability
5. Beauty
6. Multiple Benefits



# Great Parks

Accessible to Everyone regardless of Age or Ability

Goal: access a park within  $\frac{1}{4}$  to  $\frac{1}{2}$  mile  
from where you live



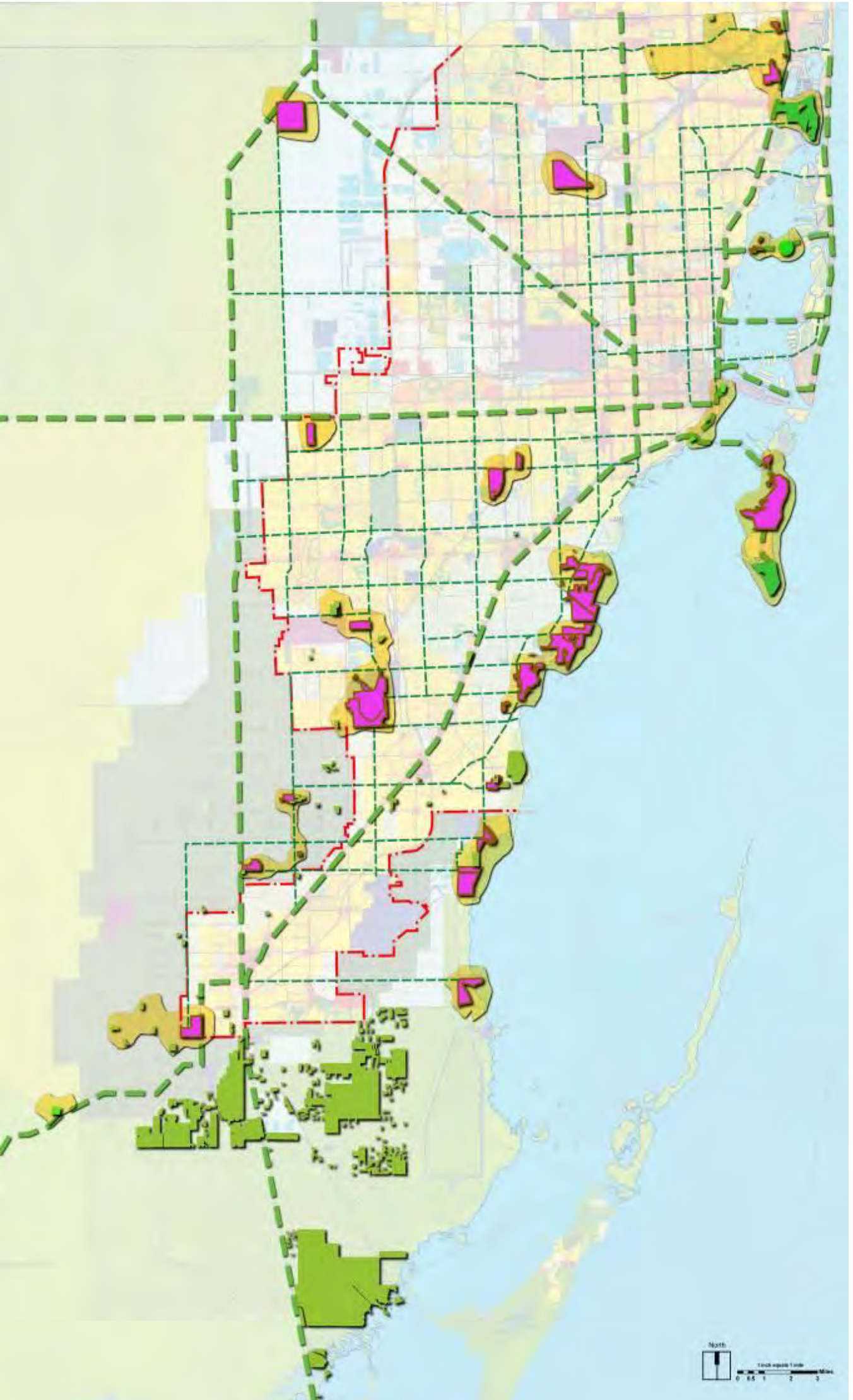
# Great Public Spaces

providing diverse recreation opportunities throughout the public realm



# Great Natural and Cultural Areas

protecting and enhancing the natural and cultural heritage of the region, as well as existing biological diversity, restoration and management actions



**Suggested Improvements**

- Restore Rockland habitat -- beginning with pine trees
- Plant native shade trees to provide comfort for pedestrians and cyclists. Also reduces urban heat
- Houses that are positioned closer to the property line will have larger private rear yards and help reinforce security by their presence
- Houses that are positioned closer to the street will have larger private rear yards and help reinforce security by their presence
- Crushed rock path aligned with striped crosswalk allows for better access to the park
- Restore pines and saw palmettos at streets edges to discourage parking in undesignated parking areas
- Define edges of the properties with low garden walls, fences, or hedges for privacy that does not sacrifice visibility
- Define edges of the properties with low garden walls, fences, or hedges for privacy that does not sacrifice visibility

# Great Streets

connecting parks and neighborhoods through tree lined boulevards, parkways, and neighborhood streets that encourage people to walk, bicycle and live healthier lifestyles

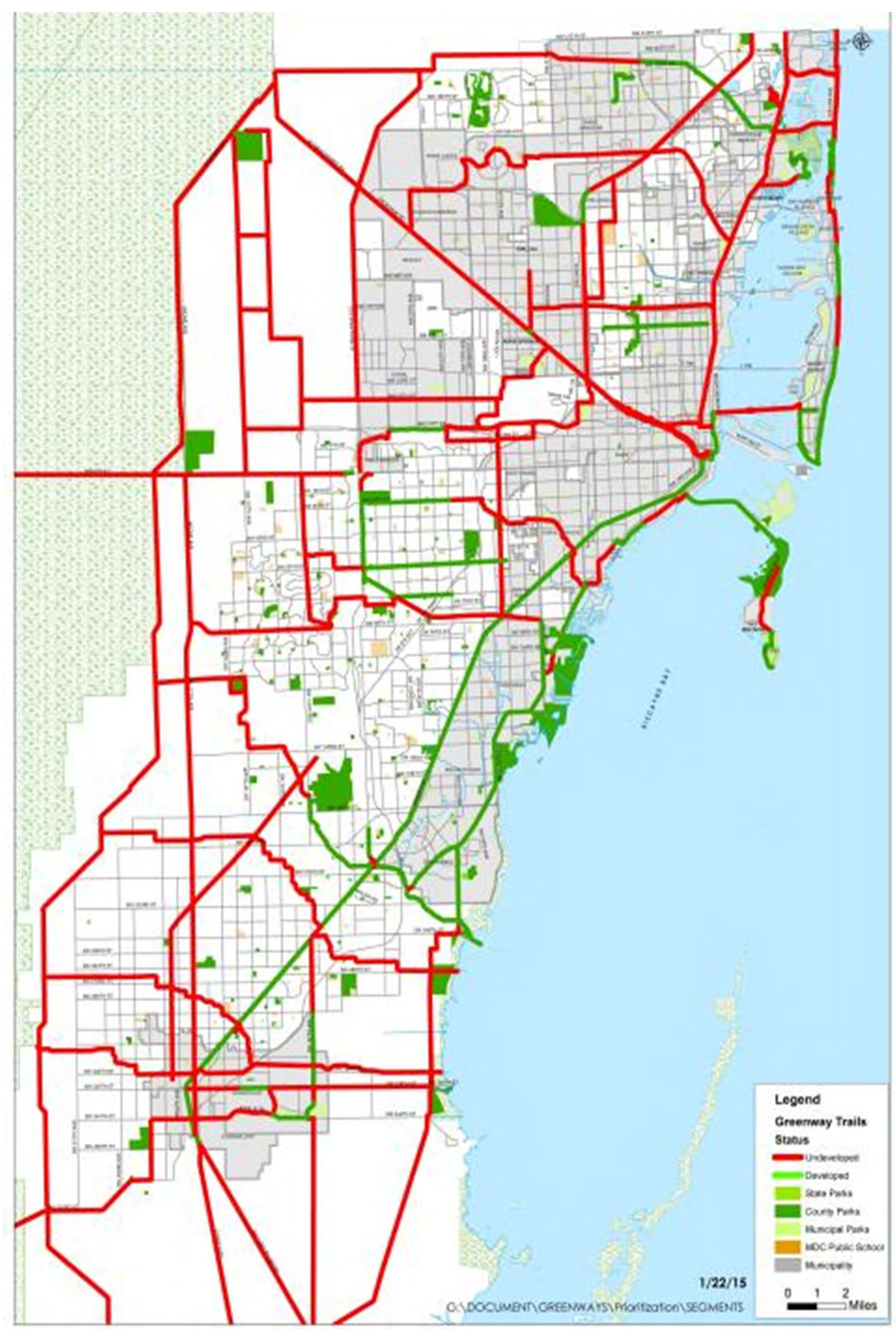
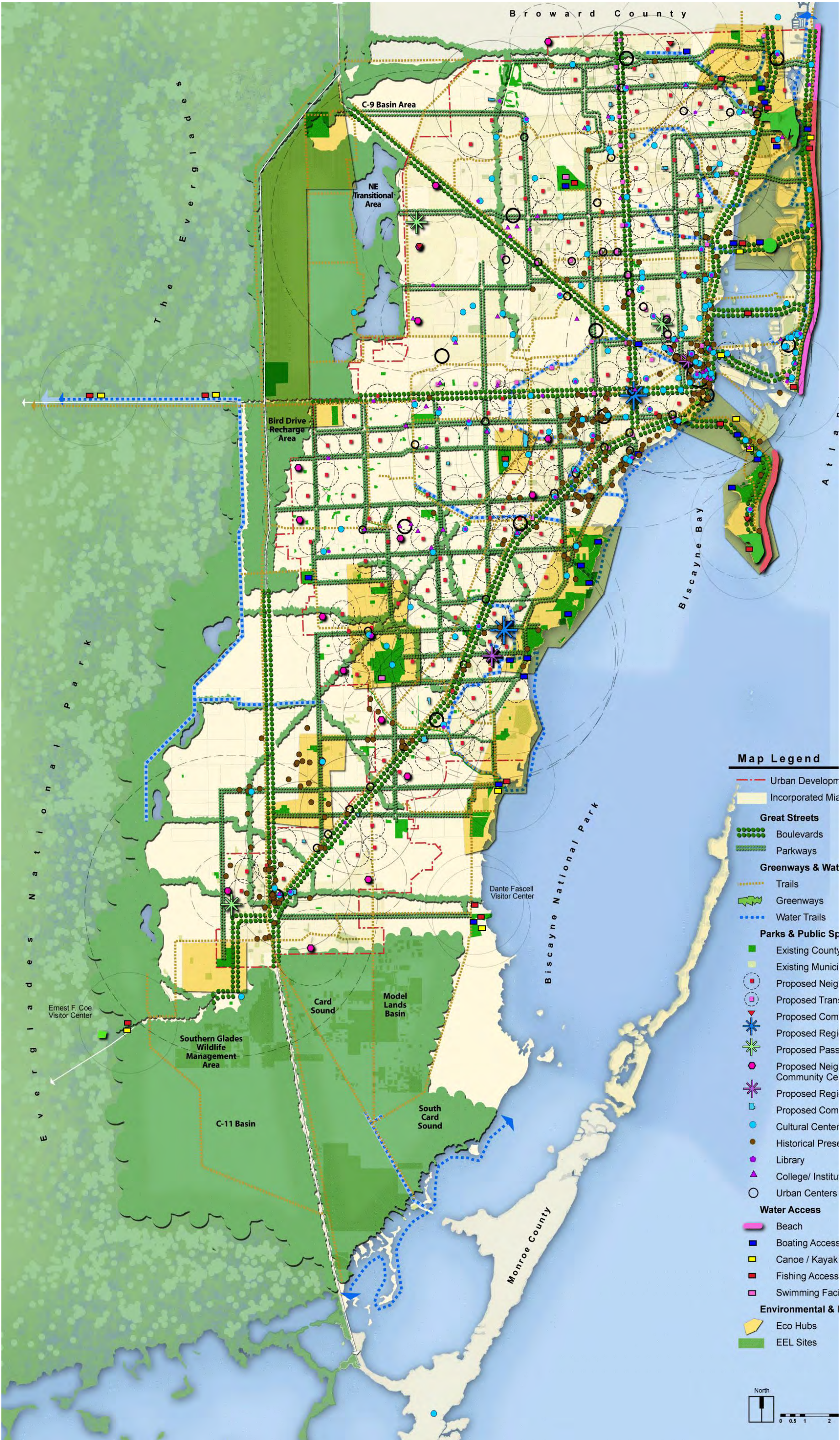




# Great Greenways and Blueways

providing wildlife habitat, scenic vistas, recreation and transportation opportunities that serve to connect parks to each other and to communities through open space corridors and waterways

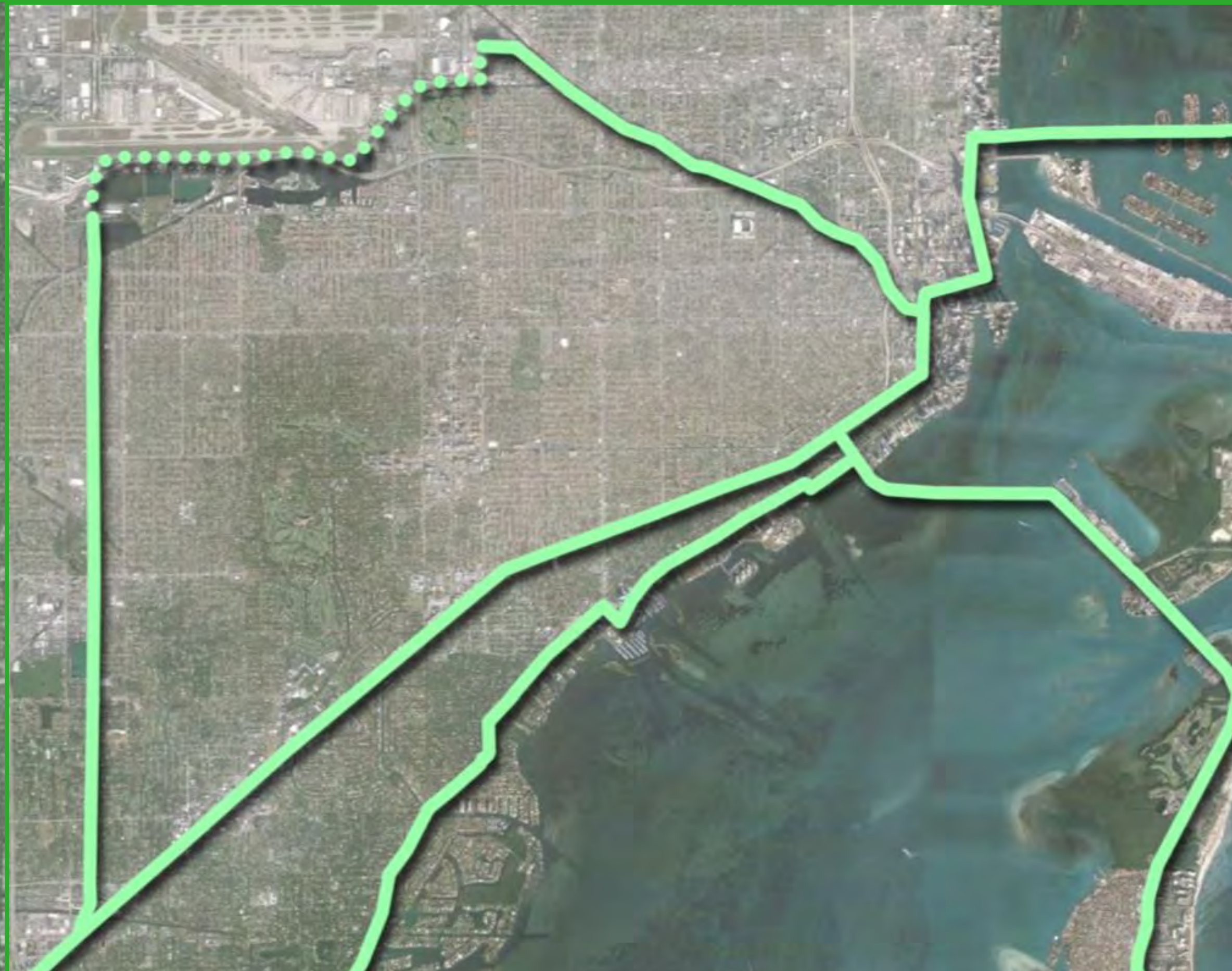




# THE MIAMI LOOP



Atlanta Beltline



Miami-Dade

The Atlanta Beltline is the largest trails-and-transit infrastructure project in the USA. Only a fraction is complete, but the Beltline has already had billions of dollars of economic impact. Imagine the transforming potential of a "Miami Loop."

# UNDERLINE



# PUBLIC-PRIVATE PARTNERS

Miami-Dade County  
Parks, Recreation, Open Spaces &  
Transportation and Public Works Departments  
Three Municipalities  
Friends of The Underline

# THE UNDERLINE

10 MILES

8 STATIONS

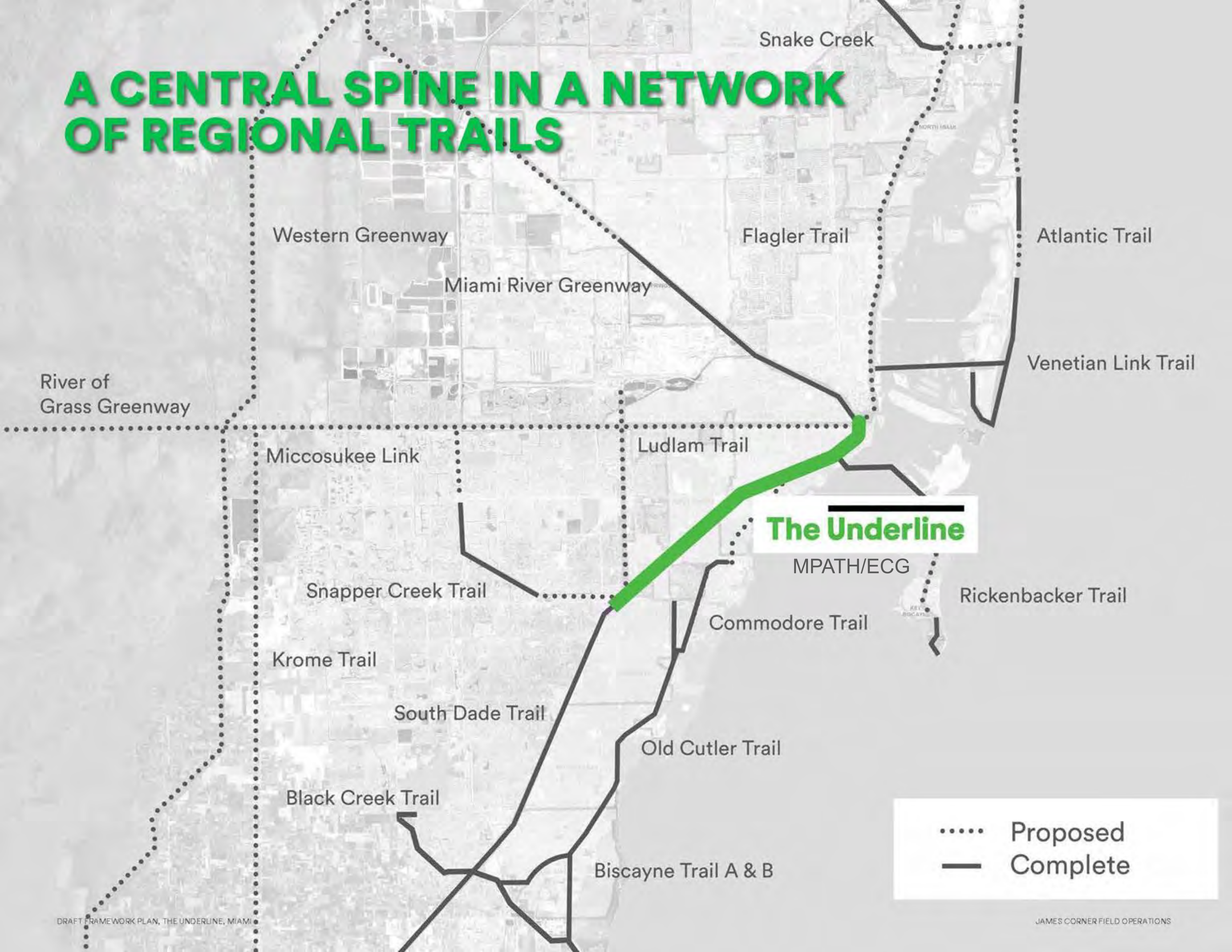
3 MUNICIPALITIES

1 LINE



**THE UNDERLINE  
WILL BE A MULTI-MODAL CORRIDOR,  
MIAMI'S SIGNATURE LINEAR PARK  
AND URBAN TRAIL**

# A CENTRAL SPINE IN A NETWORK OF REGIONAL TRAILS



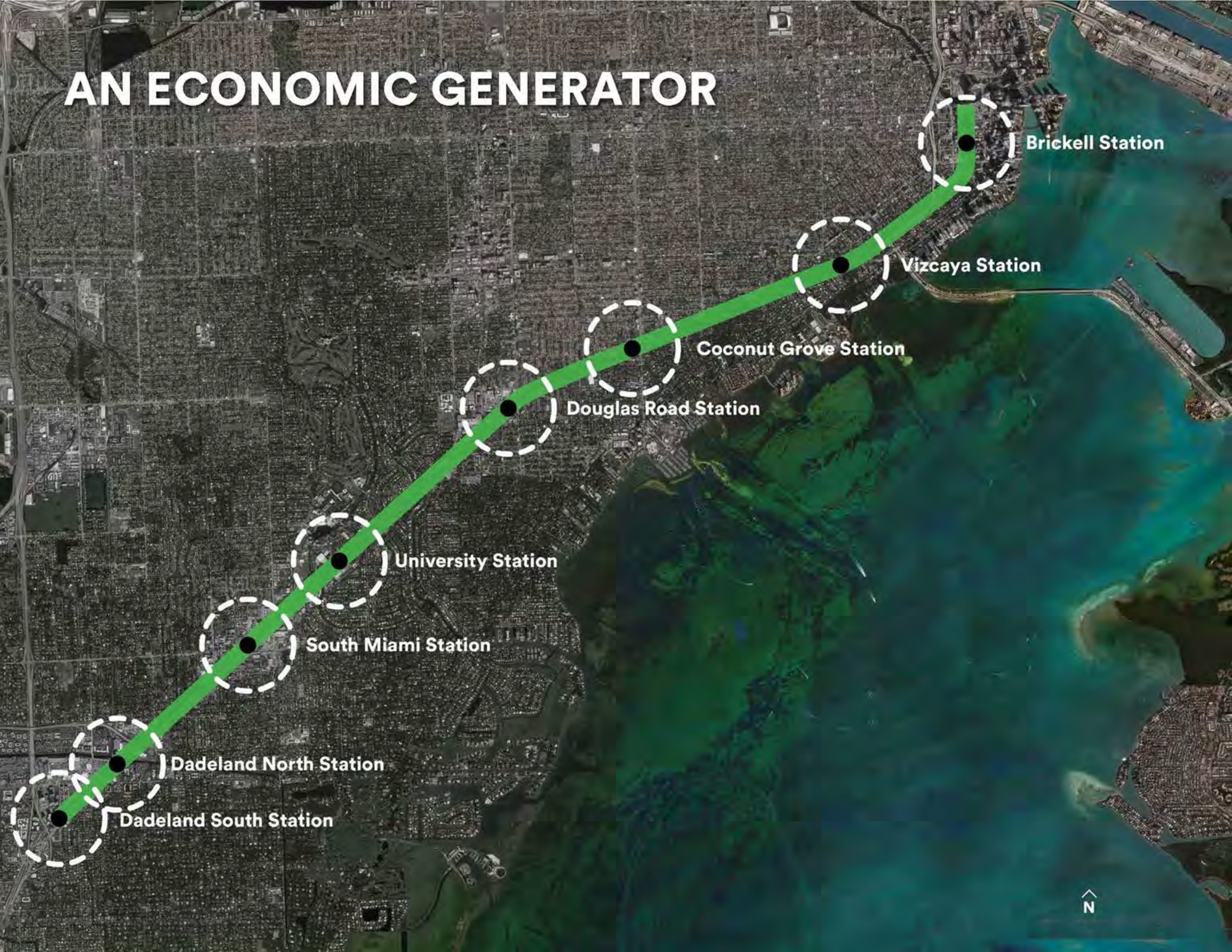
**The Underline**

MPATH/ECG

- ..... Proposed
- Complete



# AN ECONOMIC GENERATOR



Brickell Station

Vizcaya Station

Coconut Grove Station

Douglas Road Station

University Station

South Miami Station

Dadeland North Station

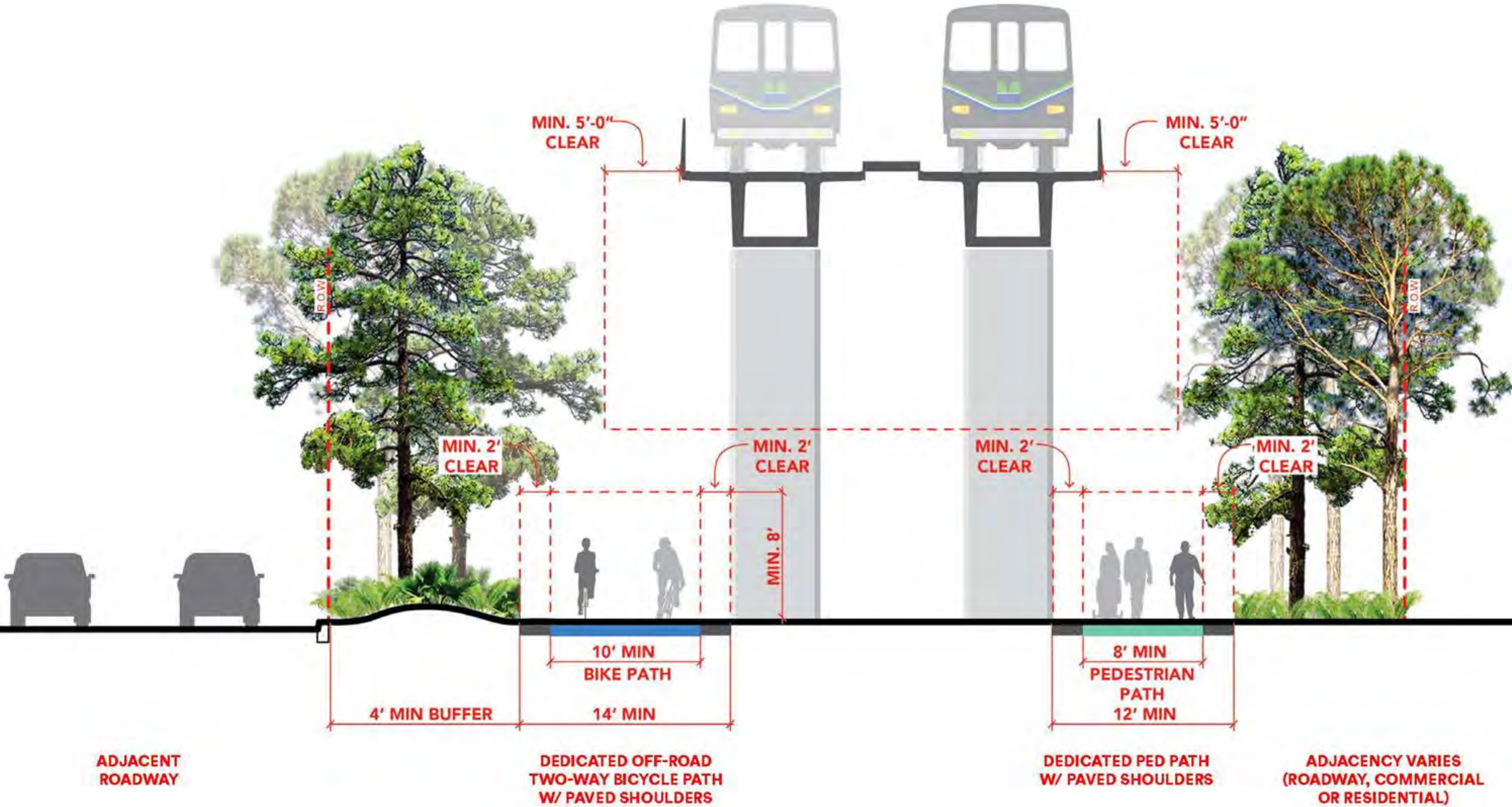
Dadeland South Station



# Accomplishments

- Incorporated 501C3 January 2014
- Studio classes UM School of Architecture Spring 2014 & 2015
- Exhibits at MCAD and Coral Gables Museum
- Raised \$645,000 master plan funding from cities of Miami, Coral Gables, South Miami, Knight Foundation, Miami Foundation, Health Foundation of South Florida, Mitchell Wolfson Foundation, private donors.
- Master Plan competitive selection of James Corner Field Operations January 2015
- Public meetings in April and June 2015
- Winner Architizer Pitching The City June 2015
- Governance model drafted July 2015
- Over 35 endorsements
- Completed Master Plan September 2015
- Total \$5,000,000 secured Miami Dade County, City of Miami funding, toward construction in Brickell Backyard
- Added Board members from Design, Construction, Art, Park, Transportation, Fundraising, Real Estate and Health Industries

# TYPICAL UNDERLINE | PROPOSED



# **FRAMEWORK PLAN:**

---

# **DESIGN ELEMENTS**

# Public Outreach

## April and June Public Meeting Findings

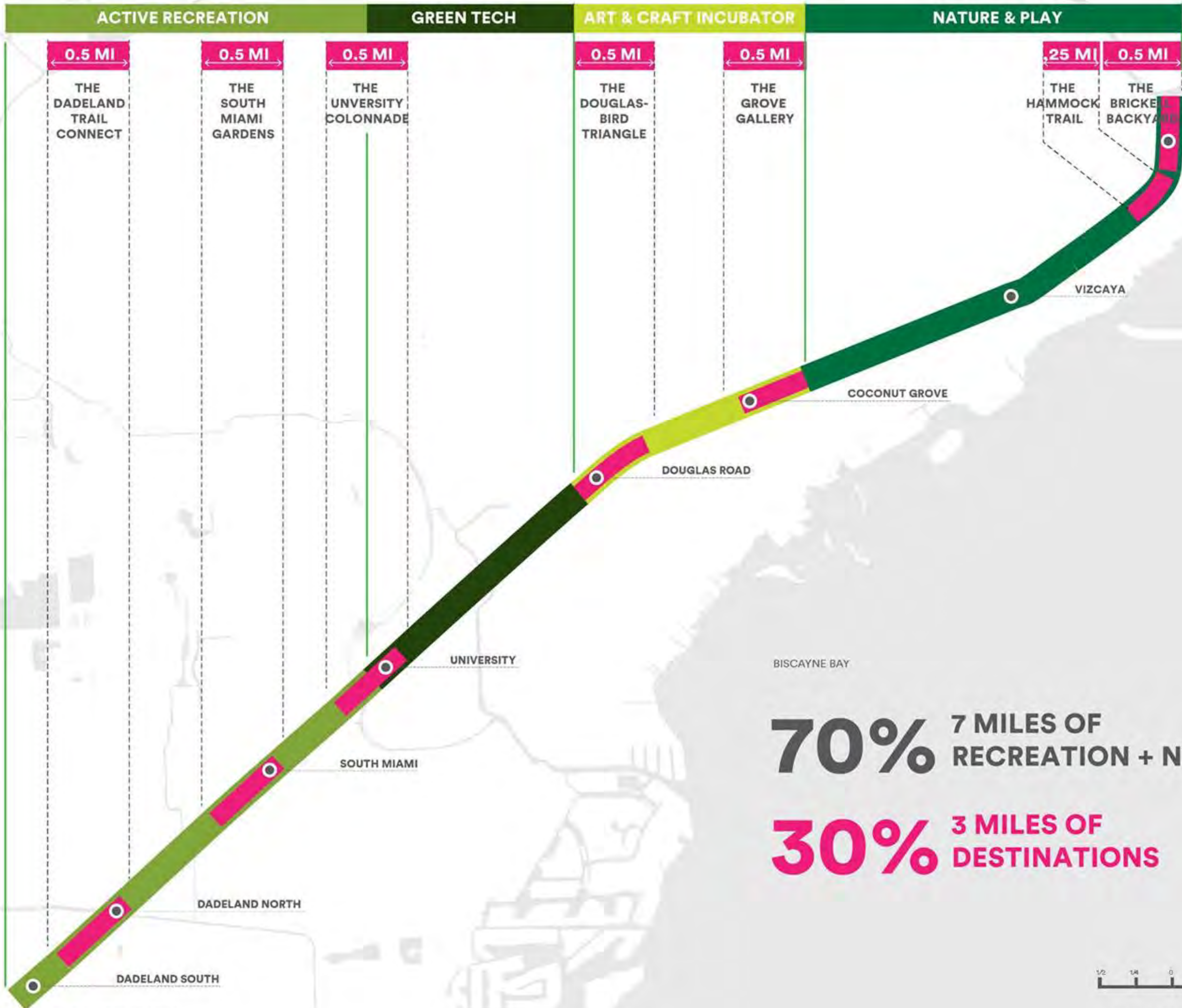


### Top Themes:

- Ecology & Natural Habitats
- Art & Culture
- Green Tech & Sustainable Initiatives

### Top Uses:

- Leisurely bike ride
- Commute By Bike
- Enjoy Nature
- Appreciate Art



**ACTIVE RECREATION**

**GREEN TECH**

**ART & CRAFT INCUBATOR**

**NATURE & PLAY**

0.5 MI

THE DADELAND TRAIL CONNECT

0.5 MI

THE SOUTH MIAMI GARDENS

0.5 MI

THE UNIVERSITY COLONNADE

0.5 MI

THE DOUGLAS-BIRD TRIANGLE

0.5 MI

THE GROVE GALLERY

0.25 MI

THE HAMMOCK TRAIL

0.5 MI

THE BRICKELL BACKYARD

DADELAND SOUTH

DADELAND NORTH

SOUTH MIAMI

UNIVERSITY

DOUGLAS ROAD

COCONUT GROVE

VIZCAYA

BRICKELL

BISCAYNE BAY

**70%** 7 MILES OF RECREATION + NATURE

**30%** 3 MILES OF DESTINATIONS



## IMPROVE INTERSECTIONS

ESTABLISH THREE TYPES OF INTERSECTION APPROACHES:

- +** MAJOR IMPROVEMENTS : 5 INTERSECTIONS  
CONSIDER ELEVATED CROSSINGS
- +** MEDIUM IMPROVEMENTS : 7 INTERSECTIONS  
CONSIDER RAISED CROSSINGS
- +** MINOR IMPROVEMENTS (BEST PRACTICES FOR THE ENTIRE CORRIDOR) : 22 INTERSECTIONS  
CONSIDER A COMBINATION OF TRAFFIC CALMING TECHNIQUES & PATH REALIGNMENT



THE UNDERLINE | PROPOSED





**THE RIVER ROOM | AT THE MIAMI RIVER**  
EXISTING



**THE RIVER ROOM | AT THE MIAMI RIVER**  
PROPOSED



**MIAMI RIVER WALK**

FRAMEWORK PLAN, THE UNDERLINE, MIAMI

**BRICKELL STATION**



JAMES CORNER FIELD OPERATIONS

**THE GYM | BETWEEN SW8TH ST TO SW 9TH**  
EXISTING



**THE GYM | BETWEEN SW8TH ST TO SW 9TH**  
PROPOSED



**BRICKELL STATION**

FRAMEWORK PLAN, THE UNDERLINE, MIAMI

**SW8TH ST**



JAMES CORNER FIELD OPERATIONS

# THE BRICKELL BACKYARD | MIAMI RIVER TO SW 17TH RD PROPOSED



**THE HAMMOCK PLAY ZONE | BETWEEN SW 15TH RD TO SW 17TH RD**  
PROPOSED



FRAMEWORK PLAN, THE UNDERLINE, MIAMI



JAMES CORNER FIELD OPERATIONS

**THE GROVE GALLERY | SW 24TH AVE TO SW 31ST**  
PROPOSED



FRAMEWORK PLAN, THE UNDERLINE, MIAMI



JAMES CORNER FIELD OPERATIONS

**THE UNIVERSITY COLONNADE | STANFORD DRIVE TO SW 57TH AVE**  
EXISTING





**THE UNIVERSITY COLONNADE | STANFORD DRIVE TO SW 57TH AVE**  
PROPOSED



 **CORAL GABLES**

**UNIVERSITY OF MIAMI** 

**GREEN TECH GALLERY | UM STATION PLAZA**  
PROPOSED



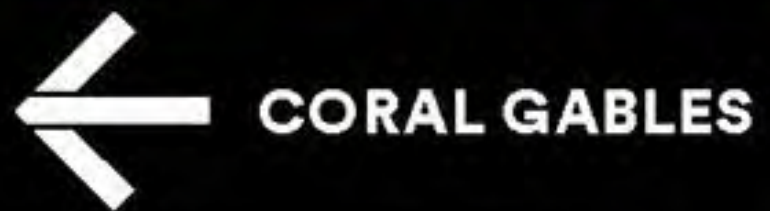
 **UM METRORAIL STATION**

FRAMEWORK PLAN, THE UNDERLINE, MIAMI

**PONCE DE LEON BLVD** 

JAMES CORNER FIELD OPERATIONS

**THE RAIN GARDEN | CABALLERO BLVD TO S ALHAMBRA CR**  
PROPOSED



FRAMEWORK PLAN, THE UNDERLINE, MIAMI



JAMES CORNER FIELD OPERATIONS

**THE RIBBON RINK | S ALHAMBRA CR TO SANTONA ST  
PROPOSED**



**CORAL GABLES**

FRAMEWORK PLAN, THE UNDERLINE, MIAMI

**UNIVERSITY OF MIAMI**



JAMES CORNER FIELD OPERATIONS

**THE RIBBON RINK | S ALHAMBRA CR TO SANTONA ST  
PROPOSED**



**THE BRIDGE | THE SW 57TH AVE BRIDGE  
PROPOSED**



**UNIVERSITY OF MIAMI**

FRAMEWORK PLAN, THE UNDERLINE, MIAMI



**SOUTH MIAMI**

JAMES CORNER FIELD OPERATIONS

# COMPARABLE

## Atlanta Beltline

**Total Beltline: 22 miles planned, 6 miles built**

***Transforming the way people move in Atlanta***

**\$14 Million/mile**

## Chicago 606

**Total 606: 2.7 miles**

***Opening day: 50,000 people attended***

**\$35 Million/mile**

## Indianapolis Cultural Trail

**Total Cultural Trail: 8 miles 30' wide**

***\$865 Million economic impact***

***11,000 jobs***

**\$8 Million/Mile**

# FUNDING SOURCES & USES

TEN-MILE TRAIL 2 paths, lighting, hardscape & landscape

TOTAL \$80 MILLION

\$60 Million Government Grants – Transportation/Trails

\$20 Million private sponsorships

36 INTERSECTION IMPROVEMENTS

TOTAL \$20 MILLION

\$20 Million Government Grants – Biking safety interventions

THREE MILES OF DESTINATION PARKS

\$20 Million private sponsorships



# **BUILD THE UNDERLINE**

## **First phase – Brickell Backyard**

\$5 Million for construction raised:

Miami-Dade County \$3 Million

City of Miami \$1 Million

FDOT \$1 Million

# CREATE VALUE/CATALYZE DEVELOPMENT

## NEW DEVELOPMENT PLANNED TOD

\$3 Billion pipeline of new development near corridor  
\$150 million incremental assessed value  
\$60 million in new tax revenue over 20 years

## RESIDENTIAL REAL ESTATE APPRECIATION

\$300-\$485 million in increased taxable real estate value  
\$120-200 Million in new tax revenue over 20 years

## CONSTRUCTION & OPERATIONAL IMPACT

1,400 jobs  
\$170 million in total economic output during construction  
\$50 million in economic activity annually after completion



---

# The Underline

**THANK YOU!**

[www.theunderline.org](http://www.theunderline.org)

[@theunderlinemia](https://www.instagram.com/theunderlinemia)

[#underlinemiami](https://www.facebook.com/underlinemiami)

[#lovetheunderline](https://www.facebook.com/lovetheunderline)

# WHY THE UNDERLINE?

## **ECONOMIC IMPACT**

*Connect to and increase sales for nearby businesses, increase property value, job creation, attract & retain talent*

## **TRANSPORTATION**

*Attract new users to transit &  
A Transportation Solution*

## **PUBLIC SPACE**

*Adding over one hundred acres open space*

## **PUBLIC ART & PROGRAMMING**

*Civic Engagement*

## **HEALTH IMPACT**

*Promote mobility and activity and disease prevention*

## **CONNECTIVITY**

*Miami-Dade Parks Regional trail system masterplan*

## **ECO-TOURISM**

*Serve as a destination for bicyclists and tourists*

## **SUPERLATIVE**

*The longest biking, walking corridor in the country running below transit*

# Broad-based support

## Partners

Miami-Dade County

Miami-Dade County Transit

Miami-Dade County Parks, Recreation, and Open Spaces

University of Miami

## Endorsements

Miami-Dade County

City of Miami

City of Coral Gables

City of South Miami

Village of Pinecrest

Baptist Health of South Florida

Miami Herald Editorial Board

Miami Association of Realtors

AIA, APA

Downtown Development Authority

Many biking groups

## Funders

City of Miami

City of Coral Gables

City of South Miami

The John S. & James L. Knight Foundation

Miami Foundation & Mitchell Wolfson  
Foundation

Health Foundation of South Florida

# To Do: Next Steps



- Economic Impact Study, Implementation & Phasing Schedule, Governance, Donor Recognition, Maintenance Strategy, October 2015
- Final Public Meetings November 9
- Wheels 2015, November 11-15
- Design and construction funds for
- Begin building Fall 2016

# DESIGN

**Completed in 6 months:**

Master Plan

Cost Estimate

Economic Impact Study

Maintenance Plan