

30A Mobility Project



Vision



The 30A Mobility Project envisions developing inter-modal, sustainable and advanced transportation solutions that will contribute to reduced traffic and parking congestion along 30A.

This will serve to enhance the quality of life, environmental and economic growth of the area.

Autonomous On-Demand

30A Mobility Project

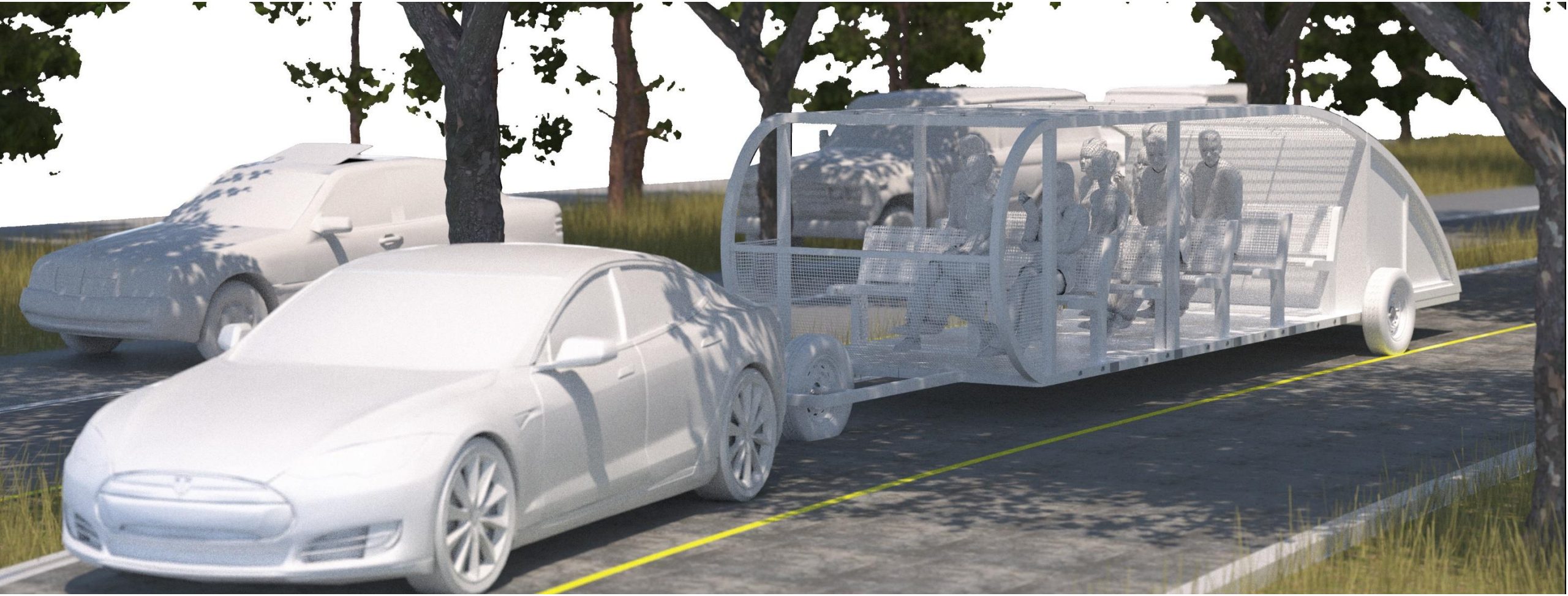


next

V0.0 | 2015

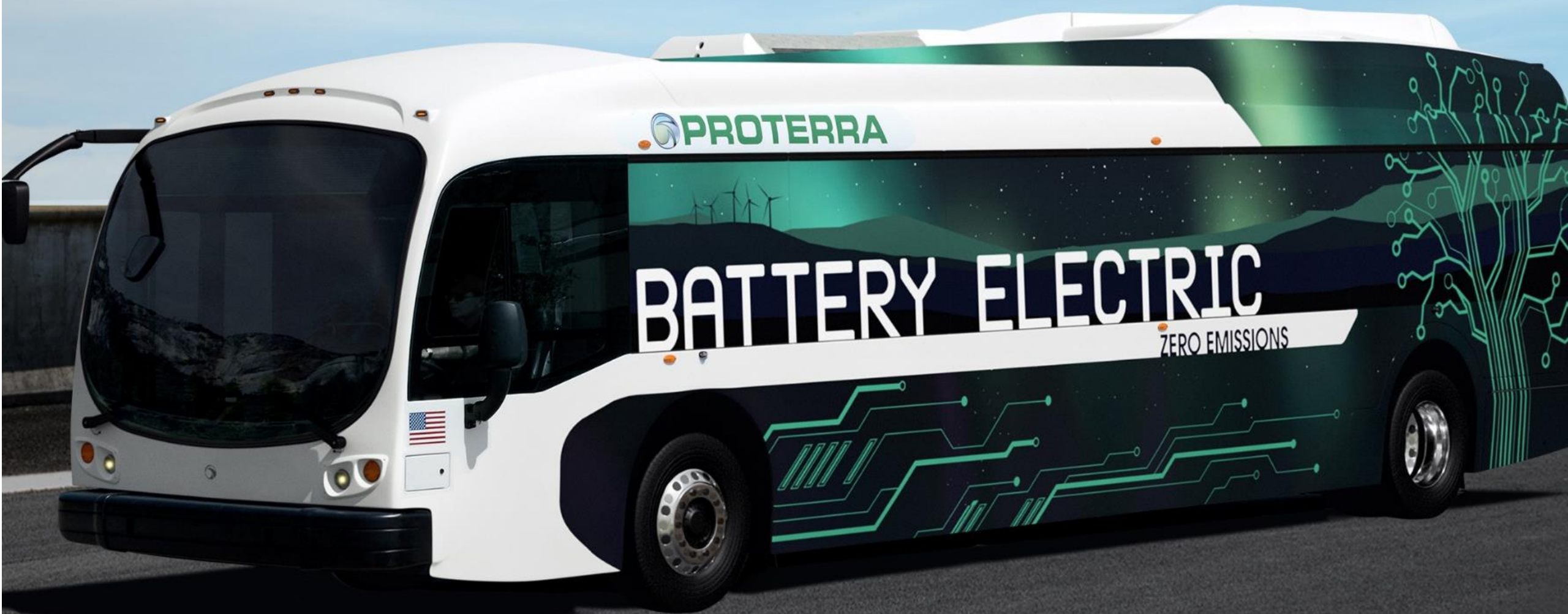
Dedicated Transit Lane

30A Mobility Project



Electric

30A Mobility Project



Micro-Mobility



RENT ME
I'M ELECTRIC
& FUN

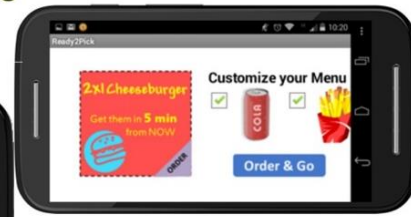
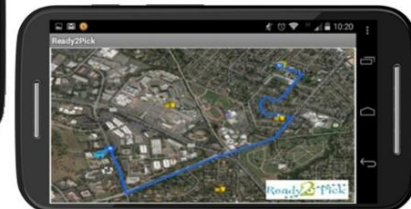
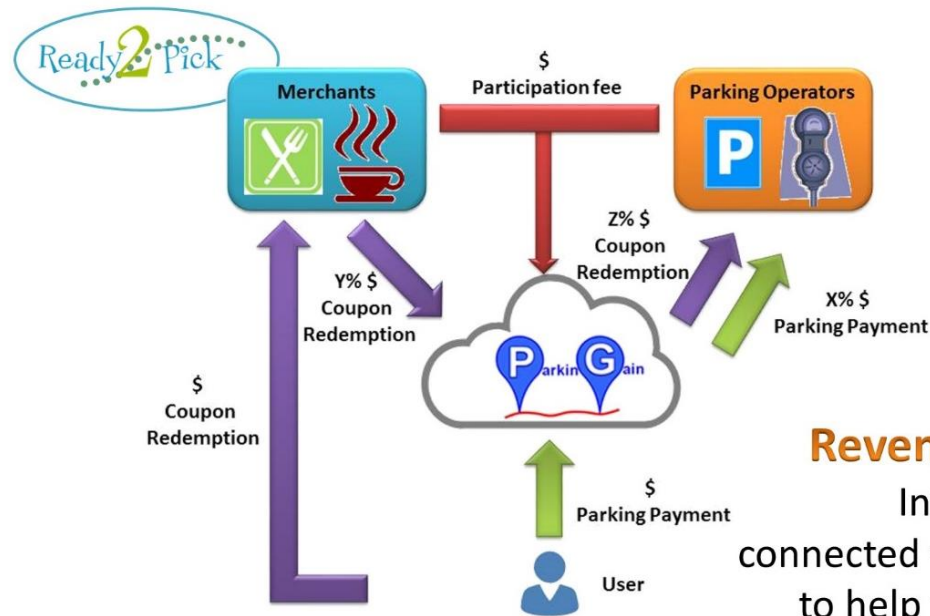
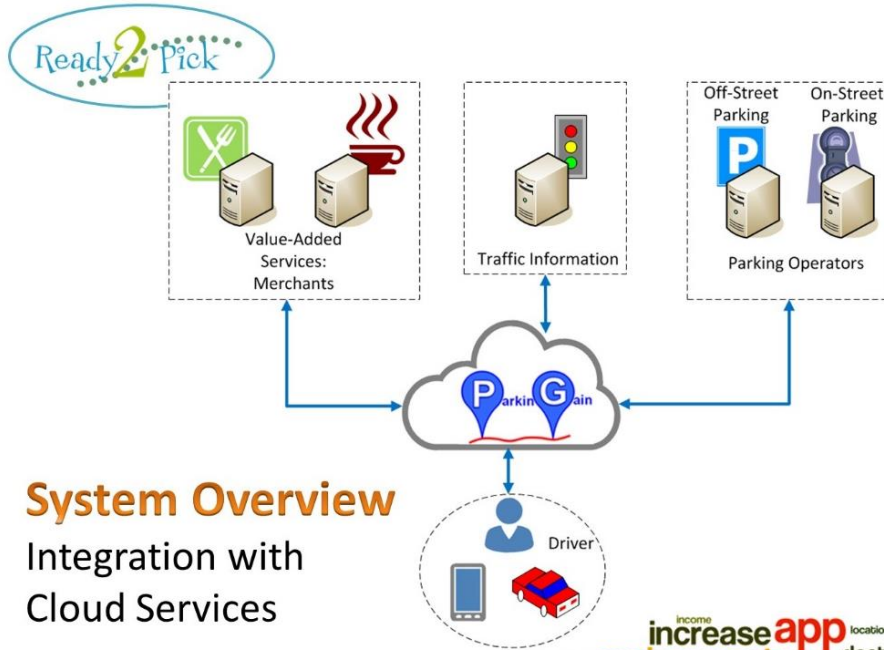
RENT ME
I'M ELECTRIC
& FUN

RENT ME
I'M ELECTRIC
& FUN

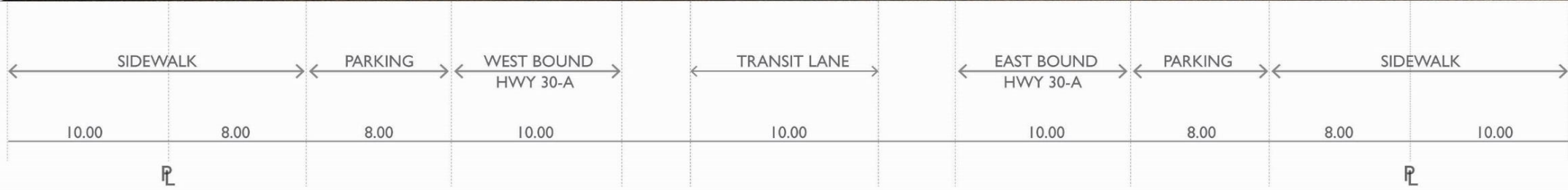
& FUN



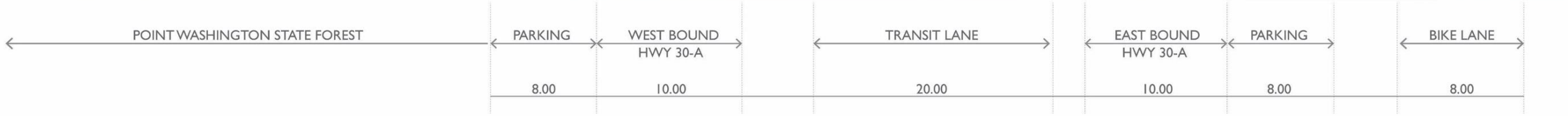
Smart Parking



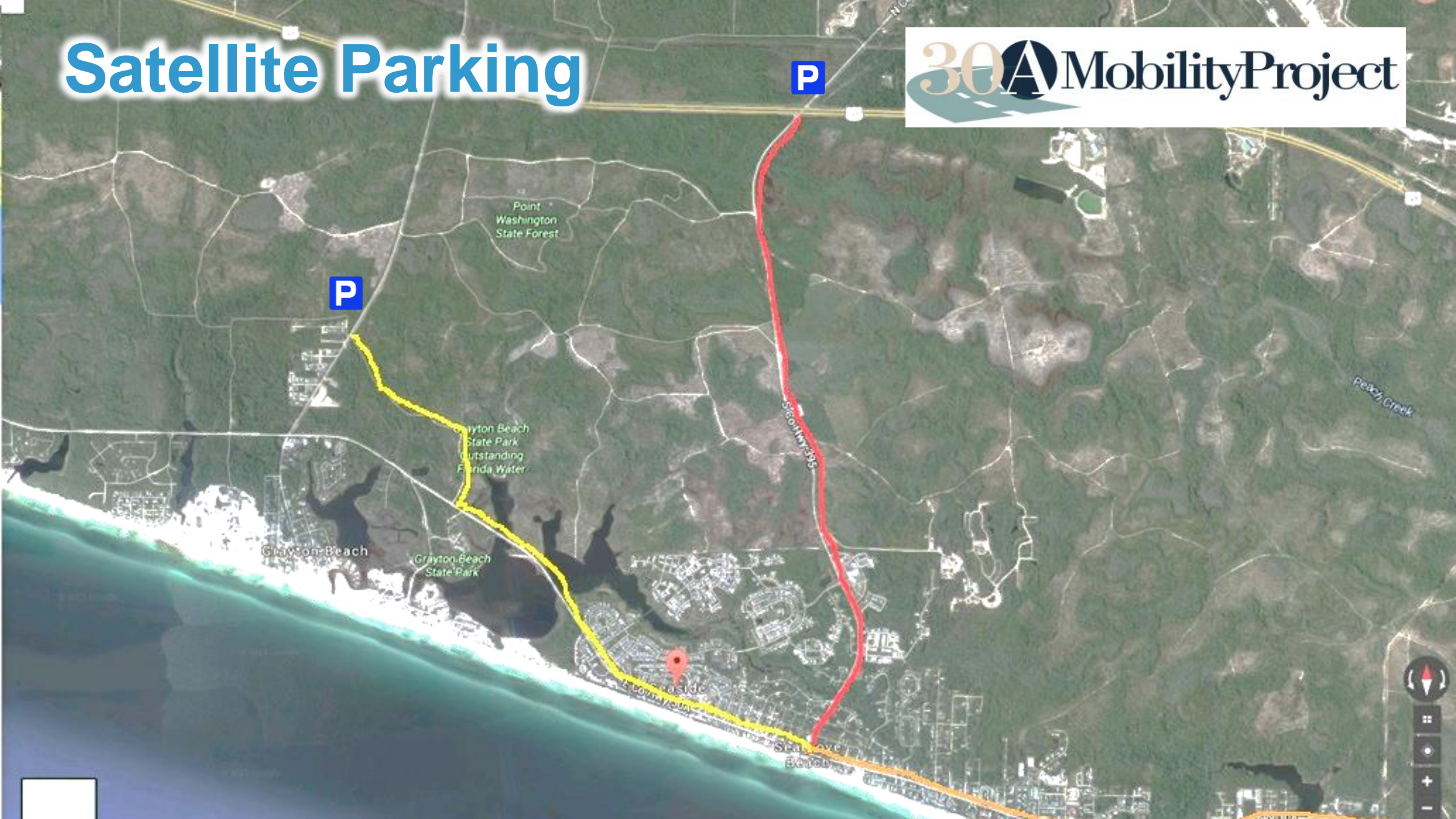
Dedicated Transit Lane



Dedicated Transit Lane



Satellite Parking



Satellite Parking – Communities Lanes



Jogging &
Bicycle track

Dedicated
transit lane

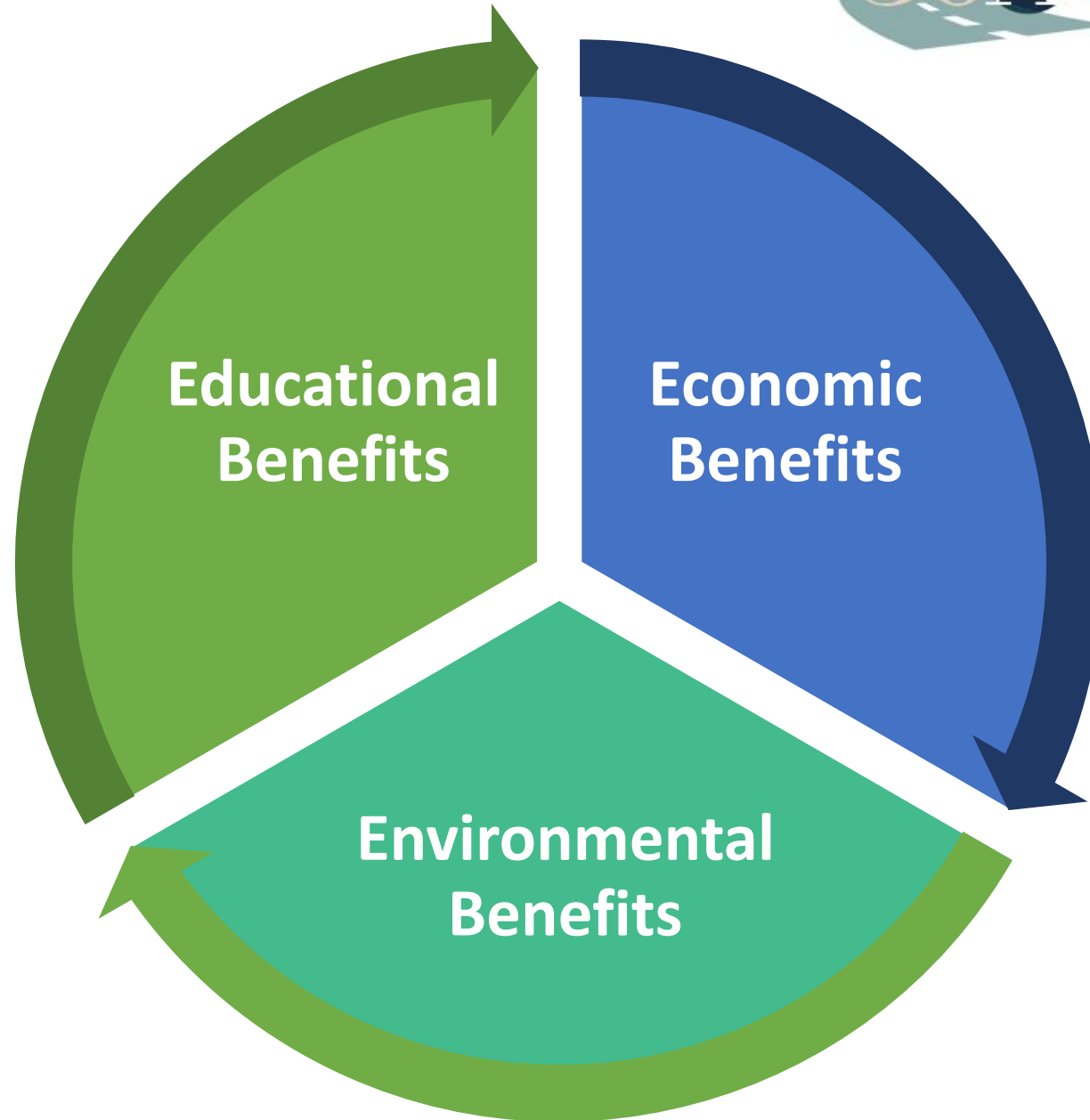
Satellite Parking – Communities Lanes

Jogging track

Transit trail



Benefits



Test Bed & Living Labs



International Transportation Innovation Center

CTO ITIC - Dr. Joachim Taiber; ITIC Executive Director – John Hopkins

Vision

To support R&D of disruptive transportation technologies

Wireless charging infrastructure and testing for electrified vehicles and grid connectivity

V2V (vehicle to vehicle), V2I (vehicle to infrastructure) and automated driving testbed

4G, 5G, DSRC mixed communication test infrastructure (software defined networks)

Cloud computing infrastructure

Cybersecurity

Strategic Importance and Location

Less than 10 driving minutes from CU-ICAR

Close to Clemson University and start-ups present in downtown Greenville, SC

Close to major OEMs and suppliers

ITIC is a platform to attract academia, start-ups and industry leaders to create an ecosystem to foster the research, development and validation of disruptive transportation technologies



The logo for the 30A Mobility Project. It features the number '30' in a gold, serif font, followed by a dark blue circle containing a white letter 'A'. Below these elements is a stylized road with white dashed lines receding into the distance. To the right of the graphic, the words 'Mobility Project' are written in a dark blue, serif font.

30A Mobility Project

Contact information:

Joachim Taiber. CTO of ITIC
jtaiber@clermson.edu

tel: [+1-864-906-6161](tel:+1-864-906-6161)

Pablo Sauras-Perez. Clemson University International Center for Automotive Research – CU-ICAR
psauras@clermson.edu

tel: [+1-864-320-6366](tel:+1-864-320-6366)

Diane Dorney. Executive Director of The Seaside Institute
ddorney@seasideinstitute.org

tel: [+1-240-481-4418](tel:+1-240-481-4418)