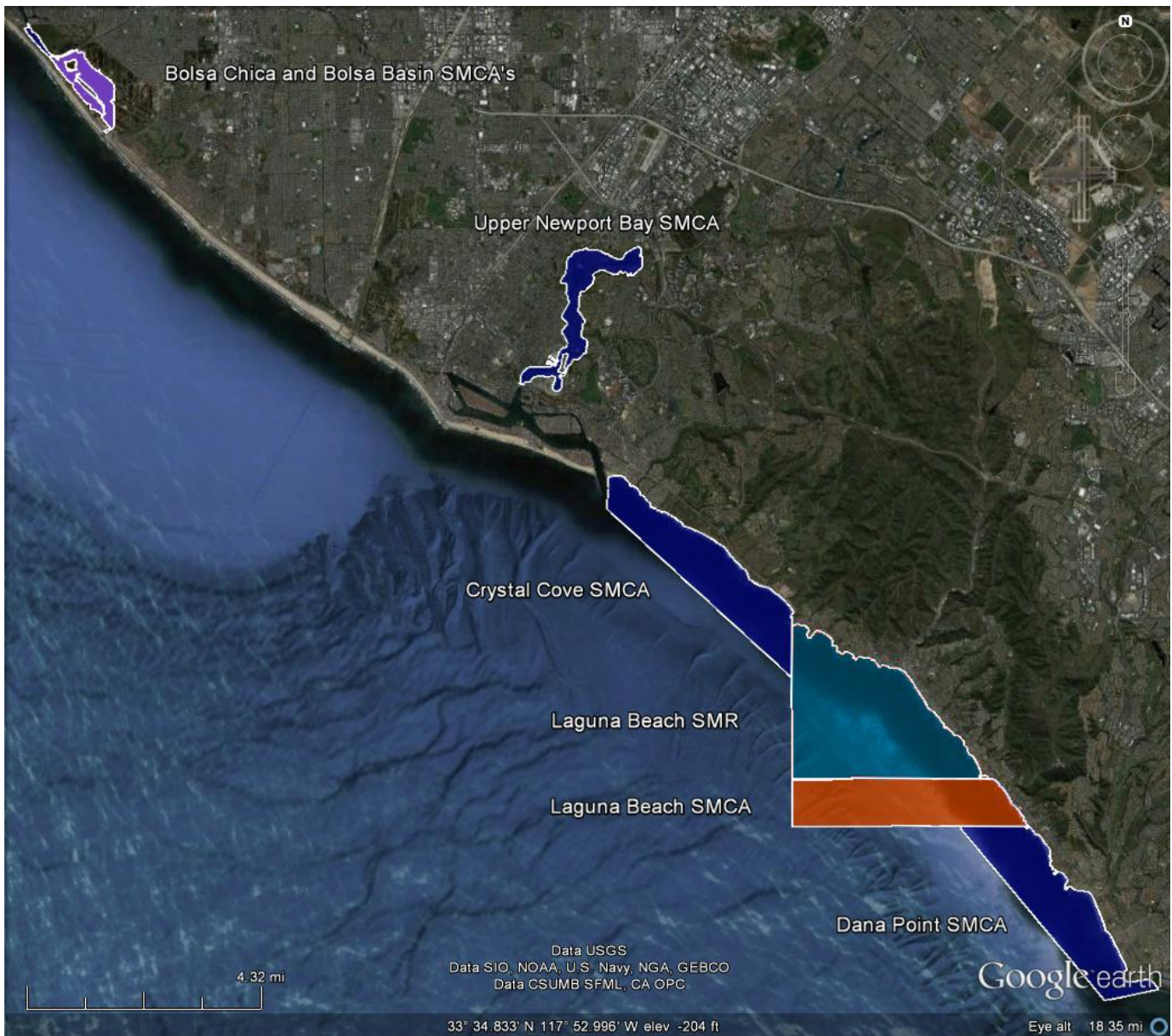




Orange County MARINE PROTECTED AREAS

2nd Quarter 2015 Report



WHAT IS THE OC MPA WATCH PROGRAM?

The Orange County Marine Protected Area (OC MPA) Watch Program enlists volunteers, community groups, and local government to monitor human uses in and around the seven Orange County MPAs. The program is organized and run by Orange County Coastkeeper (OCCK) with partners listed below.

ACTIVITIES OBSERVED:

- ◆ *What human uses occur in and around MPAs?*
- ◆ *What resources are needed to support the MPAs?*
- ◆ *Are regulations being followed?*
- ◆ *Have consumptive and non-consumptive uses changed since the MPAs were implemented?*

PARTNERS:

To assure the effectiveness of Marine Protected Areas (MPAs) and to determine the impacts on marine resources, we need to identify the types of human activities that occur in or near MPAs. Gathering this data is time consuming, so partnerships with key community groups and engaged citizens are a cost-effective and resource-efficient way to evaluate human uses. Trained volunteers can



produce accurate and reliable information that can be used to better understand how individuals use MPAs.

- ◆ City of Newport Beach
- ◆ City of Laguna Beach
- ◆ Crystal Cove State Park
- ◆ Laguna Bluebelt Coalition
- ◆ Members of the public
- ◆ City of Dana Point
- ◆ Eco Adventure Center Ritz-Carlton

ORANGE COUNTY MARINE PROTECTED AREAS

- ◆ Bolsa Chica SMCA
- ◆ Bolsa Basin SMCA
- ◆ Crystal Cove SMCA
- ◆ Dana Point SMCA
- ◆ Laguna Beach SMCA
- ◆ Laguna Beach State Marine Reserve (SMR)
- ◆ Upper Newport Bay SMCA

DATA:

With sound practices, data from effective volunteer monitoring programs can be used **to inform resource managers and provide information to enhance the management and performance of Marine Protected Areas.**

This data collected by MPA Watch volunteers is analyzed **to identify human use patterns** in MPAs. OCCK then uses the collected information to prepare quarterly reports that summarize the survey data for use by resource managers, partner groups and the public. **This data will allow resource managers and community groups working in the MPAs to make decisions on where to invest their resources and maximize benefits to the MPAs and the community.**

The Department of Fish and Wildlife intends to review the success of MPAs on a regular basis. Monitoring of habitat, species and economic impacts is being done by other organizations. Concurrent human use surveys are needed to provide context for ecological data interpretation. More than just ecological factors need to be monitored to better understand MPA effectiveness. **MPA Watch data provides the human use context needed to assist with the interpretation of biological data in the South Coast region through monitoring of human uses inside MPAs.**

MPA Watch should be viewed as the first part of a three-step process of monitoring, education, and enforcement to assure that the MPAs are given the chance to succeed.

Each survey segment is selected within an MPA at strategic locations. Survey sites vary in size and duration of the survey spent at each. Volunteers usually take between one and two hours (including traveling to and from the site) to complete their surveys. Volunteers are trained to record only activities specifically within the MPA boundaries on the beaches – not on trails, roads or parking lots-- and to only mark the activity being engaged at the moment that they are passed on a route or viewed from a distance.

METHODOLOGY:

The OC MPA Watch Program volunteers are trained to gather data on how areas within the seven OC MPAs are being used. On- and near-shore data is gathered by volunteers walking along the beach or viewing from a vantage point. Volunteers are provided with monitoring datasheets to record observed ocean-use activities, their location, weather, time, tides, etc. During the class and field training, volunteers are trained to identify 30 different consumptive and non-consumptive activities, both onshore and offshore. Each observed activity is recorded quantitatively on the data sheet. After the data sheets are returned to Orange County Coastkeeper, they undergo a Quality Control review for completeness before the data is entered into a project database. The data is then analyzed on a quarterly basis, and a data summary report is created and distributed.

The MPA Watch program has been designed as a standardized survey, not necessarily a scientific study. Since we are still in the beginning stages of MPA implementation, the program will adapt over time to meet the needs of the resource managers and local community. 2012 and 2013 data was collected using our original methodology and data sheets based off the original MPA Watch Program developed by Monterey Coastkeeper.



In 2014 OCCK worked with other organizations to develop a statewide MPA Watch program. Changes included a refined data sheet, standardized monitoring methods and a statewide project website. There are now 30 activities included on the standardized data sheet, and all monitors undergo the same training and use the same survey methods. The statewide website at www.mpawatch.org; volunteers can now enter their surveys online where it can be organized and downloaded to streamline the analysis.

HOW DO WE DEFINE THE OBSERVED ACTIVITIES?

We chose and defined 30 activities that our volunteers would be most likely to observe during their surveys, such as beach recreation, wildlife viewing, snorkeling, paddle boarding, and of course, fishing. Each activity falls under one of the four categories:

- ◆ On-shore non-consumptive activity
- ◆ On-shore consumptive activity
- ◆ Off-shore non-consumptive activity
- ◆ Off-shore consumptive activity.

On-shore vs. Off-shore Distinction: On-shore includes any activities that are within the MPA boundaries of the mean high tide line, which, for the purposes of this project, includes sandy beaches and rock areas up to the nearest bluff or man-made structure. Off-shore includes the area within the offshore MPA boundaries as defined in the Fish and Game code and all activities that occur in this area.

Consumptive vs. Non-consumptive: Consumptive activities include recreational and commercial take of marine species both on and offshore. Non-consumptive activities include kayaking, surfing, scuba-diving, wildlife viewing, and beach-visiting.

MPA Regulations

The 'take' regulations vary for each OC MPAs and are summarized below.

- ◆ **Laguna Beach SMR** and **Laguna Beach SMCA** do not allow *any* take of living marine resources including plants, animals.
- ◆ **Upper Newport Bay SMCA** allows the take of finfish only by hook-and-line from the shore in designated areas. The take of marine aquatic plants invertebrates is prohibited.
- ◆ **Crystal Cove SMCA** and **Dana Point SMCA** allow the *recreational* take of finfish by hook-and-line or by spearfishing along with lobster and sea urchin, and the *commercial* take of lobster, urchins, and coastal pelagic species, such as sardine, anchovy, and squid, by round haul net. The take of any living marine resources from inside tidepools in these MPAs is prohibited.
- ◆ **Bolsa Bay SMCA** allows the recreational take of finfish by hook and line only from designated areas.
- ◆ **Bolsa Basin SMCA prohibits** any take of living marine resources including plants, animals.

State Marine Protected Areas in Orange County do not prohibit any non-consumptive activities, however in the **Bolsa Chica** and **Upper Newport Bay SMCA**s some *non-consumptive* activities are not allowed on- and offshore due to the overlay of an ecological reserve that is a separate designation from the Marine Protected Area.

The *Upper Newport Bay Ecological Reserve*, which covers the northern portion of the Upper Newport Bay SMCA, only allows swimming between North Star Beach and mid-channel. Boats are limited to speeds less than five miles an hour. Additionally, shoreline access is confined to established trails, paths, or other designated areas. The *Bolsa Chica Ecological Reserve* does not allow swimming or boating and allows shore access only at one spot near the Warner Street Bridge for fishing

SURVEY RESULTS

January 1st, 2012 was the implementation date for the South Coast MPAs from Point Conception to the Mexican border. **Between April 1st and June 30st of 2015, we completed 120 surveys and observed 7,825 activities**, consumptive and non-consumptive, onshore and offshore. We found that the frequency of non-consumptive activities greatly outnumbered consumptive activities, with 98% of the activities observed being non-consumptive. Of these activities, beach recreation was the most popular non-consumptive activity. Of the consumptive activities, fishing by hook and line was the most popular

During this period we observed 0 activities that appeared to violate MPA take regulations.

Below is a detailed discussion of the results from the different MPAs and the major jurisdictions within running from north to south.

The **Upper Newport Bay SMCA** allows fishing from shore using hook and line only. Due to the ecological reserve overlay, fishing is only allowed at four designated sites: Castaways Beach, North Star Beach, Rocky Point, and the Jamboree Bridge. Each of these is also a survey site. The most popular activities are beach recreation, SCUBA diving, and stand-up paddleboarding. The most popular consumptive activity was shore fishing.



The **Crystal Cove SMCA** allows the *recreational* take of lobster and sea urchin, and of finfish by hook-and-line or spearfishing, and the *commercial* take of lobster, urchins, and coastal pelagic species such as sardine, anchovy and squid by round haul net. The take of all “living marine resources” from tidepools is prohibited. This SMCA consists of two distinct jurisdictions:

- ◆ The City of Newport Beach survey areas cover Corona Del Mar Beach, Little Corona Del Mar Beach, and Morning Canyon Beach. The most popular activities here are beach recreation, walking, and surfing. We observed no instances of the taking of “living marine resources”.

- ◆ The **Crystal Cove State Park** section covers the Pelican Point, Los Trancos, and Reef Point survey areas. The most common activities here are beach recreation and swimming. The most common consumptive activity was boat fishing by rod/reel. We observed no taking of “living marine resources” this quarter at Crystal Cove State Park

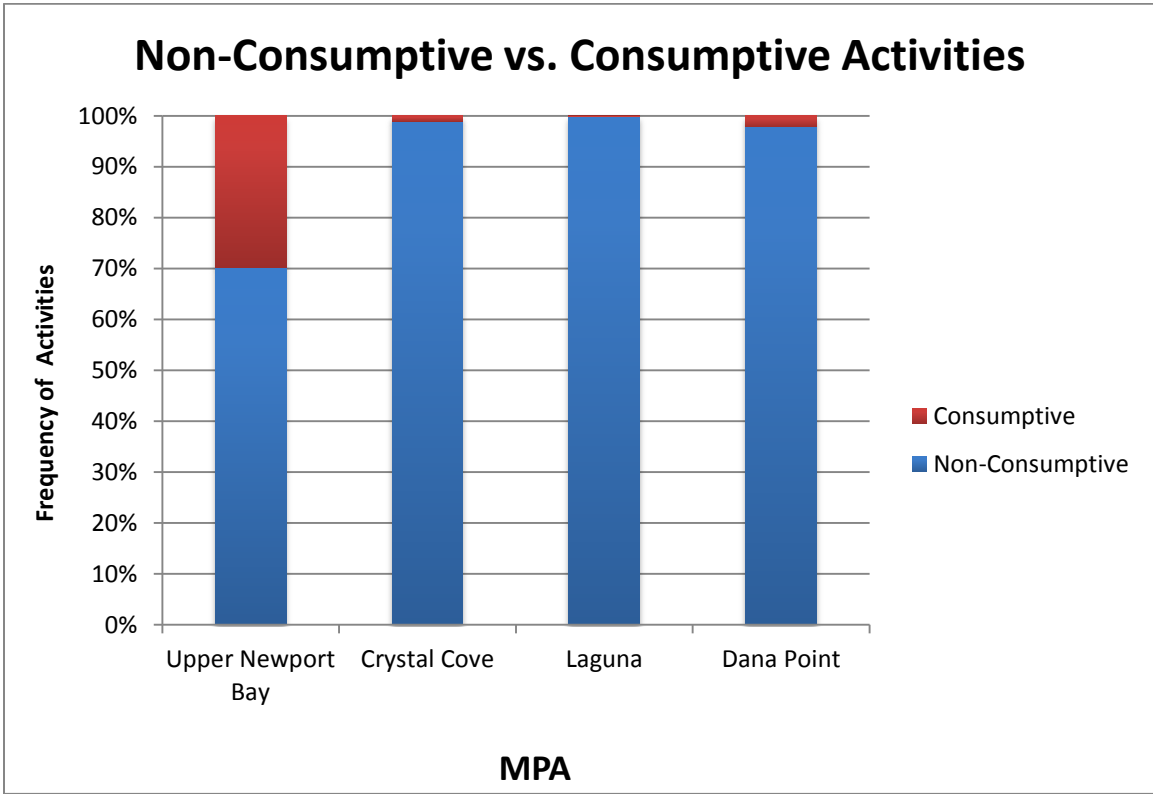
The **Laguna Beach Marine Reserve** does not allow take of any marine resources in the 5.5 mile stretch from Abalone Point in the north to Table Rock point in the south. The Reserve contains fifteen survey sites covering almost every accessible beach. Within the Laguna Beach SMR, we have chosen Crescent Bay, Shaw’s Cove, Moss Point, Aliso State Beach, and Table Rock Beach as sites to be focused. Beach recreation and tidepooling are the most popular onshore activities with swimming, surfing/boogie boarding, and stand-up paddleboarding as the most popular offshore activities. We did not observe any potential violations within this time period.

The **Dana Point SMCA** allows the *recreational* take of lobster and sea urchin, and of finfish by hook-and-line or spearfishing, and the *commercial* take of lobster, urchins, and coastal pelagic species such as sardine, anchovy, and squid by round haul net. The take of all “living marine resources” from inside the tidepools in these MPAs is prohibited. The Totuava Beach, Thousand Steps Beach, Three Arch Bay, Salt Creek, Dana Strands, and Dana Point survey sites cover this area. The most popular activities here are beach recreation and board sports. We did not observe any potential MPA violations.

Observed Activities During MPA Watch Visits					
MPA	Onshore, Non-Consumptive Activities	Onshore, Consumptive Activities	Offshore, Non-Consumptive Activities	Offshore, Consumptive Activities	Totals
Upper Newport Bay	33	38	57	0	128
Crystal Cove	1433	8	122	8	1571
Laguna	4458	2	527	2	4989
Dana Point	953	17	160	7	1137
Totals	6877	65	866	17	7825

Frequency of MPA Watch Visits per Month				
MPA	April	May	June	Total
Upper Newport Bay (4 Sites)	11	2	4	17
Crystal Cove (6 Sites)	13	4	3	20
Laguna (14 Sites)	31	27	9	67

Dana Point (6 Sites)	4	9	3	16
----------------------	---	---	---	----



This chart shows the frequency of non-consumptive versus consumptive activities in Orange County Marine Protected Areas. The blue represents non-consumptive activities while the red represents consumptive activities.