

Best Management Practice Select an appropriate BMP except "Combined BMPs-Calculated" for each subwatershed in each land use table using the pull-down list-box if interactions between BMPs are not considered. Select "Combined BMPs-Calculated" if multiple BMPs and their interactions in the subwatersheds are considered; use BMP calculator (under STEPL menu) to obtain the combined BMP efficiencies and enter them in Table 7.

Urban BMP Tool

Gully and Streambank Erosion

1. BMPs and efficiencies for different pollutants on CROPLAND, ND=No Data

Watershed	Cropland		BOD	Sediment	BMPs	% Area BMP Applied
	N	P				
W1 - Upper Deer Ck	0	0	0	0	0 No BMP	00
W2 - Twomile Ck	0	0	0	0	0 No BMP	00
W3 - Lower Deer Ck	0	0	0	0	0 No BMP	00
W4 - Black Ck	0	0	0	0	0 No BMP	00

2. BMPs and efficiencies for different pollutants on PASTURELAND, ND=No Data

Watershed	Pastureland		BOD	Sediment	BMPs	% Area BMP Applied
	N	P				
W1 - Upper Deer Ck	0	0	0	0	0 No BMP	00
W2 - Twomile Ck	0	0	0	0	0 No BMP	00
W3 - Lower Deer Ck	0	0	0	0	0 No BMP	00
W4 - Black Ck	0	0	0	0	0 No BMP	00

3. BMPs and efficiencies for different pollutants on FOREST, ND=No Data

Watershed	Forest		BOD	Sediment	BMPs	% Area BMP Applied
	N	P				
W1 - Upper Deer Ck	0	0	0	0	0 No BMP	00
W2 - Twomile Ck	0	0	0	0	0 No BMP	00
W3 - Lower Deer Ck	0	0	0	0	0 No BMP	00
W4 - Black Ck	0	0	0	0	0 No BMP	00

4. BMPs and efficiencies for different pollutants on USER DEFINED land use, ND=No Data

Watershed	User Defined		BOD	Sediment	BMPs	% Area BMP Applied
	N	P				
W1 - Upper Deer Ck	0	0	0	0	0 No BMP	00
W2 - Twomile Ck	0	0	0	0	0 No BMP	00
W3 - Lower Deer Ck	0	0	0	0	0 No BMP	00
W4 - Black Ck	0	0	0	0	0 No BMP	00

5. BMPs and efficiencies for different pollutants on FEEDLOTS, ND=No Data

Watershed	Feedlots		BOD	Sediment	BMPs	%Area BMP Applied
	N	P				
W1 - Upper Deer Ck	0	0	0	0	0 No BMP	00
W2 - Twomile Ck	0	0	0	0	0 No BMP	00
W3 - Lower Deer Ck	0	0	0	0	0 No BMP	00
W4 - Black Ck	0	0	0	0	0 No BMP	00

6. BMPs and efficiencies for different pollutants on URBAN

To change/set BMP/LID for urban land uses, click the 'Urban BMP Tool' button on the top-left of this sheet.

7. Combined watershed BMP efficiencies from the BMP calculator

Watershed	Watershed Combined BMP Efficiencies				BMPs
	N	P	BOD	Sediment	
W1-Crop	0	0	0	0	Combined BMPs
W2-Crop	0	0	0	0	Combined BMPs
W3-Crop	0	0	0	0	Combined BMPs
W4-Crop	0	0	0	0	Combined BMPs
W1-Pasture	0	0	0	0	Combined BMPs
W2-Pasture	0	0	0	0	Combined BMPs
W3-Pasture	0	0	0	0	Combined BMPs
W4-Pasture	0	0	0	0	Combined BMPs
W1-Forest	0	0	0	0	Combined BMPs
W2-Forest	0	0	0	0	Combined BMPs
W3-Forest	0	0	0	0	Combined BMPs
W4-Forest	0	0	0	0	Combined BMPs
W1-User	0	0	0	0	Combined BMPs
W2-User	0	0	0	0	Combined BMPs
W3-User	0	0	0	0	Combined BMPs
W4-User	0	0	0	0	Combined BMPs

Urban Runoff BMP and Pollutant Load Reduction

Urban BMP Tool
Close

1. Urban pollutant concentration in runoff (mg/l)

Landuse	Commercial	Industrial	Institutional	Transportation	Multi-Family	Single-Family	Urban-Cultural	Vacant (developed)	Open Space
TN	2	2.5	1.8	3	2.2	2.2	1.9	1.5	1.5
TP	0.2	0.4	0.3	0.5	0.4	0.4	0.3	0.15	0.15
BOD	9.3	9	7.8	9.3	10	10	4	4	4
TSS	75	120	67	150	100	100	150	70	70

2. Urban landuse distribution

Landuse	Commercial	Industrial	Institutional	Transportation	Multi-Family	Single-Family	Urban-Cultural	Vacant (developed)	Open Space
W1 - Upper Deer Ck	563.4754	50.64146	798.13794	12.12542	205.41888	4528.4877	0	320.25374	654.05942
W2 - Twomile Ck	112.6551	3.70035	220.3764	3.70035	104.84325	3252.1965	0	212.1534	193.2405
W3 - Lower Deer Ck	425.79048	224.68096	249.75696	85.75992	48.14592	3319.5609	0	187.56848	401.71752
W4 - Black Ck	476.40336	181.69576	315.16664	60.40288	469.09656	2809.221	0	182.18288	376.05664

2a. Effective BMP application area (ac)

Landuse	Commercial	Industrial	Institutional	Transportation	Multi-Family	Single-Family	Urban-Cultural	Vacant (developed)	Open Space
W1 - Upper	563.4754	50.64146	798.13794	12.12542	205.41888	4528.4877	0	320.25374	654.05942
W2 - Twont	112.6551	3.70035	220.3764	3.70035	104.84325	3252.1965	0	212.1534	193.2405
W3 - Lower	425.79048	224.68096	249.75696	85.75992	48.14592	3319.5609	0	187.56848	401.71752
W4 - Black	476.40336	181.69576	315.16664	60.40288	469.09656	2809.221	0	182.18288	376.05664

3. Selected urban BMPs

Landuse	Commercial	Industrial	Institutional	Transportation	Multi-Family	Single-Family	Urban-Cultural	Vacant (developed)	Open Space
W1 - Upper Deer Ck	0 No BMP	0 No BMP	0 No BMP	0 No BMP	0 No BMP	0 No BMP	0 No BMP	0 No BMP	0 No BMP
W2 - Twomile Ck	0 No BMP	0 No BMP	0 No BMP	0 No BMP	0 No BMP	0 No BMP	0 No BMP	0 No BMP	0 No BMP
W3 - Lower Deer Ck	0 No BMP	0 No BMP	0 No BMP	0 No BMP	0 No BMP	0 No BMP	0 No BMP	0 No BMP	0 No BMP
W4 - Black Ck	0 No BMP	0 No BMP	0 No BMP	0 No BMP	0 No BMP	0 No BMP	0 No BMP	0 No BMP	0 No BMP

3a. Percentage of BMP effective area (%)

Landuse	Commercial	Industrial	Institutional	Transportation	Multi-Family	Single-Family	Urban-Cultural	Vacant (developed)	Open Space
W1 - Upper	100	100	100	100	100	100	0	100	100
W2 - Twont	100	100	100	100	100	100	0	100	100
W3 - Lower	100	100	100	100	100	100	0	100	100
W4 - Black	100	100	100	100	100	100	0	100	100

4. Pollutant loads from urban in lb/year

Watershed	Pre-BMP Load				Load Reduction				After BMP Load			
	N	P	BOD	TSS	N	P	BOD	TSS	N	P	BOD	TSS
W1 - Upper Deer Ck	36887.826	5927.9786	159738.72	1601997.2	0	0	0	0	36887.826	5927.9786	159738.72	1601997.2
W2 - Twomile Ck	20098.511	3417.4621	87962.568	896494.75	0	0	0	0	20098.511	3417.4621	87962.568	896494.75
W3 - Lower Deer Ck	26807.037	4307.5336	113826.77	1190480.4	0	0	0	0	26807.037	4307.5336	113826.77	1190480.4
W4 - Black Ck	27464.155	4408.2397	117973.48	1210255.1	0	0	0	0	27464.155	4408.2397	117973.48	1210255.1

Total Load

Total Load This is the summary of annual nutrient and sediment load for each subwatershed. This sheet is initially protected.

1. Total load by subwatershed(s)

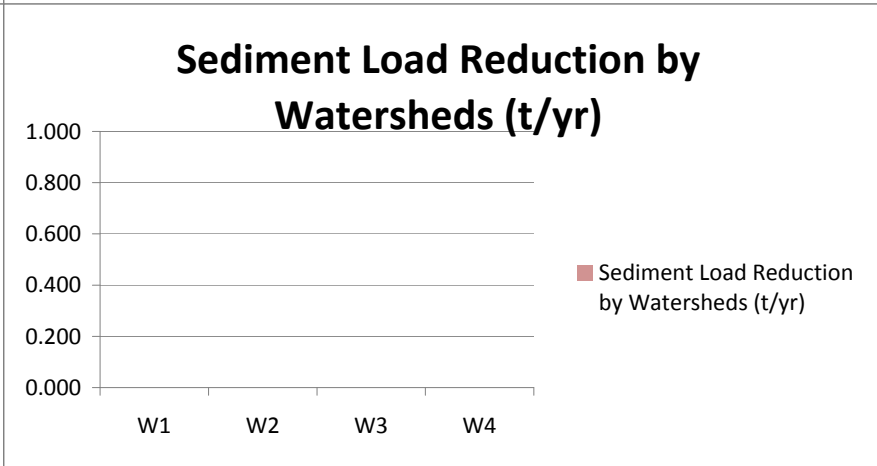
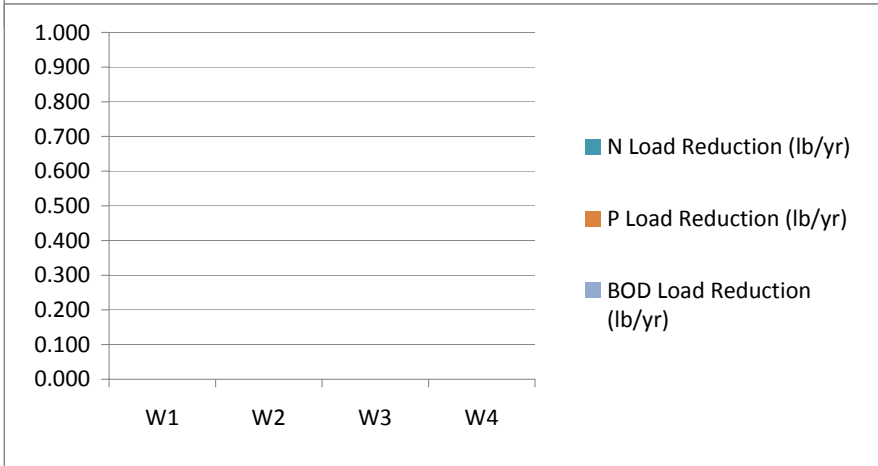
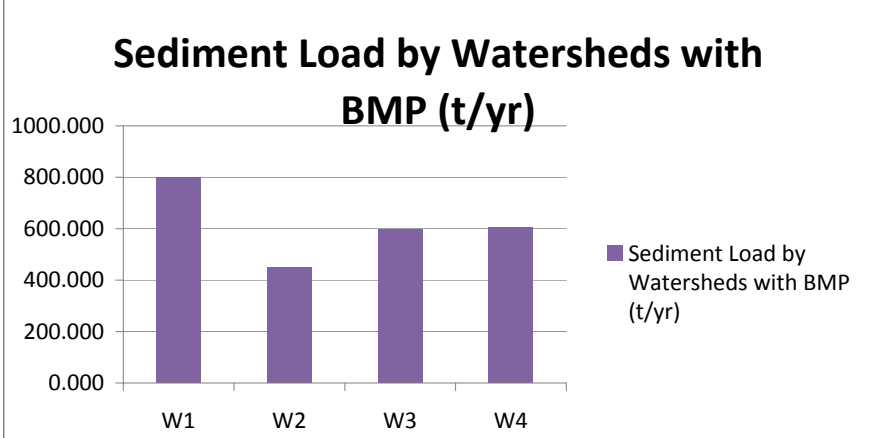
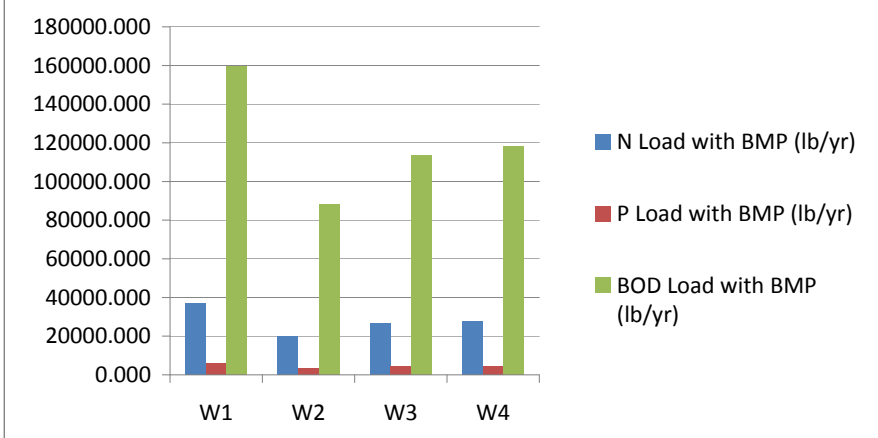
Watershed	N Load (no BMP)	P Load (no BMP)	BOD Load (no BMP)	Sediment Load (no BMP)	N Reduction	P Reduction	BOD Reduction	Sediment Reduction	N Load (with BMP)	P Load (with BMP)	BOD (with BMP)	Sediment Load (with BMP)	%N Reduction	%P Reduction	%BOD Reduction	%Sed Reduction
	lb/year	lb/year	lb/year	t/year	lb/year	lb/year	lb/year	t/year	lb/year	lb/year	lb/year	t/year	%	%	%	%
W1 - Upper Deer Ck	36887.8	5928.0	159738.7	801.0	0.0	0.0	0.0	0.0	36887.8	5928.0	159738.7	801.0	0.0	0.0	0.0	0.0
W2 - Twomile Ck	20098.5	3417.5	87962.6	448.2	0.0	0.0	0.0	0.0	20098.5	3417.5	87962.6	448.2	0.0	0.0	0.0	0.0
W3 - Lower Deer Ck	26807.0	4307.5	113826.8	595.2	0.0	0.0	0.0	0.0	26807.0	4307.5	113826.8	595.2	0.0	0.0	0.0	0.0
W4 - Black Ck	27464.2	4408.2	117973.5	605.1	0.0	0.0	0.0	0.0	27464.2	4408.2	117973.5	605.1	0.0	0.0	0.0	0.0
Total	111257.5	18061.2	479501.5	2449.6	0.0	0.0	0.0	0.0	111257.5	18061.2	479501.5	2449.6	0.0	0.0	0.0	0.0

2. Total load by land uses (with BMP)

Sources	N Load (lb/yr)	P Load (lb/yr)	BOD Load (lb/yr)	Sediment Load (t/yr)
Urban	111257.53	18061.21	479501.54	2449.61
Cropland	0.00	0.00	0.00	0.00
Pastureland	0.00	0.00	0.00	0.00
Forest	0.00	0.00	0.00	0.00
Feedlots	0.00	0.00	0.00	0.00
User Defined	0.00	0.00	0.00	0.00
Septic	0.00	0.00	0.00	0.00
Gully	0.00	0.00	0.00	0.00
Streambank	0.00	0.00	0.00	0.00
Groundwater	0.00	0.00	0.00	0.00
Total	111257.53	18061.21	479501.54	2449.61

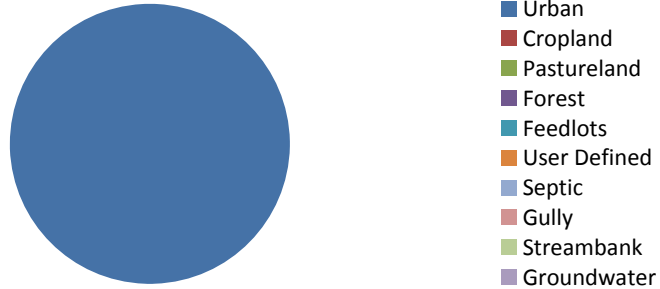
Graphs

Graphs This sheet is protected. To copy specific objects, remove the protection by clicking Tools -> Protection -> Unprotect sheet.

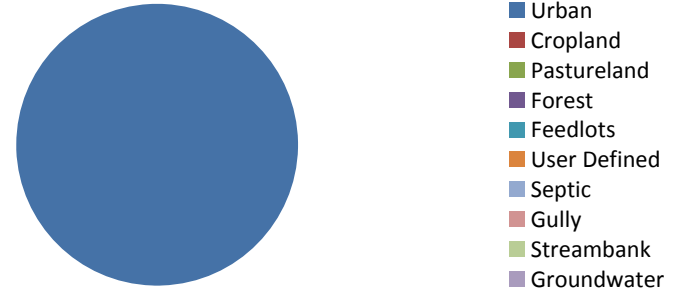


Graphs

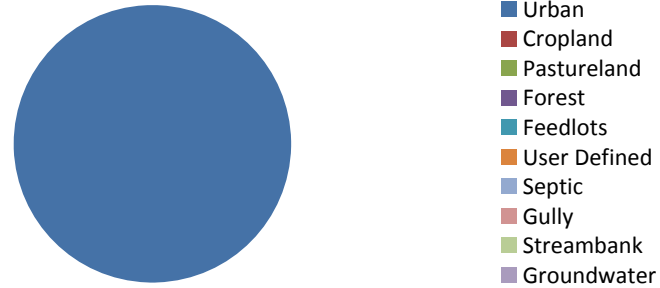
Total N Load by Land Uses (with BMP) (lb/yr)



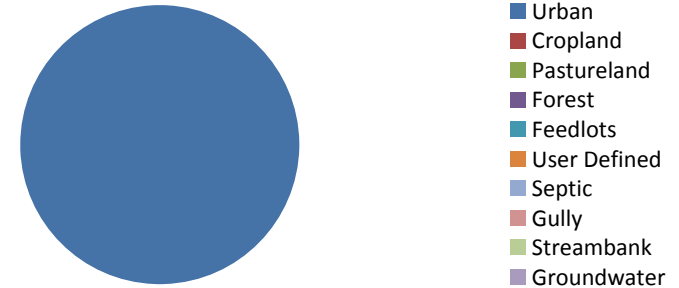
Total P Load by Land Uses (with BMP) (lb/yr)



Total BOD Load by Land Uses (with BMP) (lb/yr)

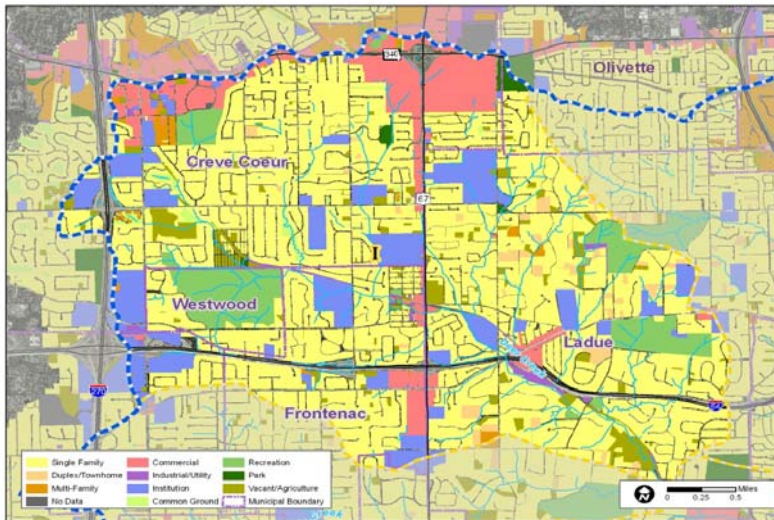


Total Sediment Load by Land Uses (with BMP) (t/yr)



Upper Deer Creek Data

Upper Deer Creek Subwatershed

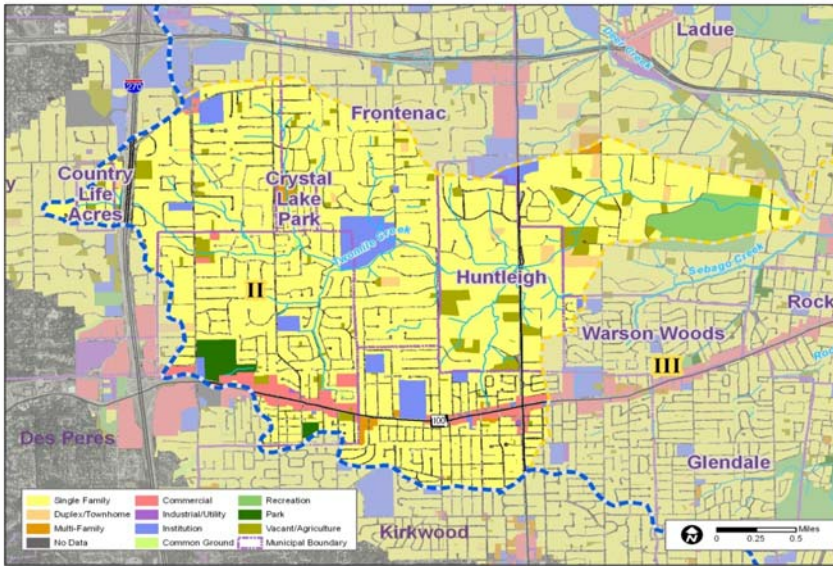


No Data = Transportation
 Open Space = Common Ground, Park, Recreation
 Multifamily = Duplex/Townhome, Multi-family
 Vacant Development = Vacant/Agriculture

<u>Subwatershed/Land Use</u>	<u>Number of</u>	<u>Acres</u>	<u>Acres</u>	<u>% Acres</u>
	<u>Parcels</u>			
Upper Deer Creek (No land use data)	15	12.1	12.1	0.17
Upper Deer Creek Commercial	191	563.8	563.8	7.90
Upper Deer Creek Common Ground	61	59.4	59.4	0.83
Upper Deer Creek Duplex/Townhome	49	145.0	145.0	2.03
Upper Deer Creek Industrial/Utility	52	50.7	798.3	11.19
Upper Deer Creek Institution	78	798.3	60.5	0.85
Upper Deer Creek Multi-Family	59	60.5	36.2	0.51
Upper Deer Creek Park	5	36.2	558.4	7.83
Upper Deer Creek Recreation	13	558.4	4528.3	63.49
Upper Deer Creek Single Family	4902	4528.3	319.9	4.49
Upper Deer Creek Vacant/Agriculture	328	319.9	7132.6	100

<u>Subwatershed/Soil Type</u>	<u>Acres</u>
Upper Deer Creek FISHPOT-URBAN LAND COMPLEX, 0 TO 5 PERCENT SLOPES	756.1
Upper Deer Creek IVA SILT LOAM, 1 TO 3 PERCENT SLOPES	18.6
Upper Deer Creek IVA-URBAN LAND COMPLEX, 1 TO 3 PERCENT SLOPES	355.4
Upper Deer Creek MENFRO SILT LOAM, 9 TO 14 PERCENT SLOPES	31.0
Upper Deer Creek MENFRO SILT LOAM, KARST, 2 TO 14 PERCENT SLOPES	274.2
Upper Deer Creek MENFRO-URBAN LAND COMPLEX, 5 TO 9 PERCENT SLOPES	228.5
Upper Deer Creek MENFRO-URBAN LAND COMPLEX, 9 TO 20 PERCENT SLOPES	37.4
Upper Deer Creek PITS, QUARRY	0.1
Upper Deer Creek URBAN LAND, UPLAND, 0 TO 5 PERCENT SLOPES	137.0
Upper Deer Creek URBAN LAND-HARVESTER COMPLEX, 2 TO 9 PERCENT SLOPES	1637.1
Upper Deer Creek URBAN LAND-HARVESTER COMPLEX, 9 TO 30 PERCENT SLOPES	1028.7
Upper Deer Creek URBAN LAND-HARVESTER COMPLEX, KARST, 2 TO 9 PERCENT SLOPES	68.1
Upper Deer Creek URBAN LAND-HARVESTER COMPLEX, KARST, 9 TO 20 PERCENT SLOPES	141.2
Upper Deer Creek WATER	22.6
Upper Deer Creek WILBUR SILT LOAM, FREQUENTLY FLOODED	68.0
Upper Deer Creek WINFIELD SILT LOAM, 2 TO 5 PERCENT SLOPES	102.7
Upper Deer Creek WINFIELD SILT LOAM, 5 TO 9 PERCENT SLOPES	46.5
Upper Deer Creek WINFIELD SILT LOAM, 9 TO 14 PERCENT SLOPES	48.6
Upper Deer Creek WINFIELD-URBAN LAND COMPLEX, 2 TO 5 PERCENT SLOPES	614.4
Upper Deer Creek WINFIELD-URBAN LAND COMPLEX, 5 TO 9 PERCENT SLOPES	1365.2
Upper Deer Creek WINFIELD-URBAN LAND COMPLEX, 9 TO 20 PERCENT SLOPES	791.6

Twomile Creek Subwatershed

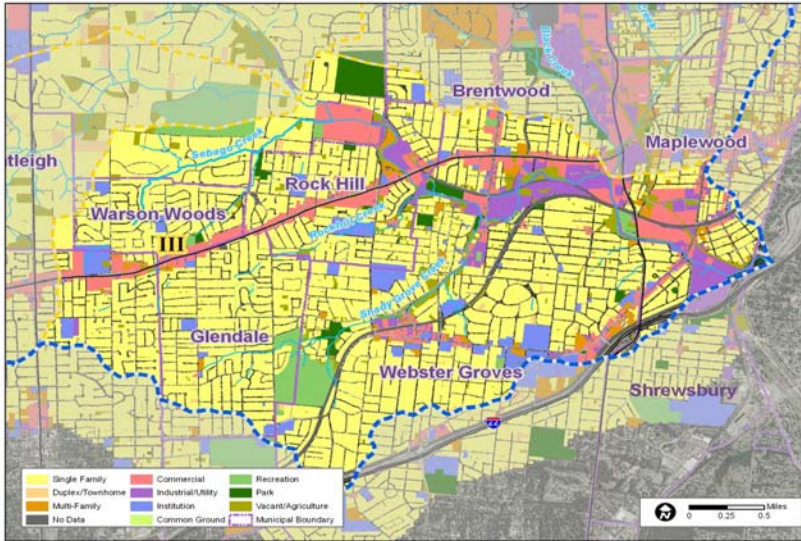


No Data = Transportation
 Open Space = Common Ground, Park, Recreation
 Multifamily = Duplex/Townhome, Multi-family
 Vacant Development = Vacant/Agriculture

<u>Subwatershed/Land Use</u>	<u>Number of Parcels</u>	<u>Acres</u>	<u>Acres</u>	<u>% Acres</u>
Twomile Creek (No land use data)	6	3.5	3.50	0.09
Twomile Creek Commercial	106	112.7	112.70	2.74
Twomile Creek Common Ground	19	9.8	9.80	0.24
Twomile Creek Duplex/Townhome	21	65.7	3.60	0.09
Twomile Creek Industrial/Utility	12	3.6	220.50	5.36
Twomile Creek Institution	27	220.5	39.00	0.95
Twomile Creek Multi-Family	8	39.0	48.90	1.19
Twomile Creek Park	3	48.9	144.50	3.51
Twomile Creek Recreation	1	144.5	3251.10	79.07
Twomile Creek Single Family	4690	3251.1	212.20	5.16
Twomile Creek Vacant/Agriculture	143	212.2	4111.50	100.00

<u>Subwatershed/Soil Type</u>	<u>Acres</u>
Twomile Creek CRIDER-MENFRO SILT LOAMS, 14 TO 30 PERCENT SLOPES	31.1
Twomile Creek CRIDER-MENFRO SILT LOAMS, 5 TO 14 PERCENT SLOPES	13.7
Twomile Creek FISHPOT-URBAN LAND COMPLEX, 0 TO 5 PERCENT SLOPES	105.7
Twomile Creek FREEBURG SILT LOAM, 2 TO 5 PERCENT SLOPES, OCCASIONALLY FLOODED	10.7
Twomile Creek IVA-URBAN LAND COMPLEX, 1 TO 3 PERCENT SLOPES	317.5
Twomile Creek MENFRO SILT LOAM, 2 TO 5 PERCENT SLOPES	5.3
Twomile Creek MENFRO SILT LOAM, 20 TO 45 PERCENT SLOPES	36.6
Twomile Creek MENFRO SILT LOAM, 5 TO 9 PERCENT SLOPES	168.7
Twomile Creek MENFRO SILT LOAM, 9 TO 14 PERCENT SLOPES	117.3
Twomile Creek MENFRO-URBAN LAND COMPLEX, 5 TO 9 PERCENT SLOPES	26.3
Twomile Creek PITS, QUARRY	0.2
Twomile Creek URBAN LAND, UPLAND, 0 TO 5 PERCENT SLOPES	0.0
Twomile Creek URBAN LAND-HARVESTER COMPLEX, 0 TO 2 PERCENT SLOPES	16.0
Twomile Creek URBAN LAND-HARVESTER COMPLEX, 2 TO 9 PERCENT SLOPES	1214.4
Twomile Creek URBAN LAND-HARVESTER COMPLEX, 9 TO 30 PERCENT SLOPES	489.3
Twomile Creek WILBUR SILT LOAM, FREQUENTLY FLOODED	201.4
Twomile Creek WINFIELD SILT LOAM, 2 TO 5 PERCENT SLOPES	82.1
Twomile Creek WINFIELD SILT LOAM, 5 TO 9 PERCENT SLOPES	205.2
Twomile Creek WINFIELD SILT LOAM, 9 TO 14 PERCENT SLOPES	197.9
Twomile Creek WINFIELD-URBAN LAND COMPLEX, 2 TO 5 PERCENT SLOPES	401.7
Twomile Creek WINFIELD-URBAN LAND COMPLEX, 5 TO 9 PERCENT SLOPES	632.5
Twomile Creek WINFIELD-URBAN LAND COMPLEX, 9 TO 20 PERCENT SLOPES	82.9

Lower Deer Creek Subwatershed



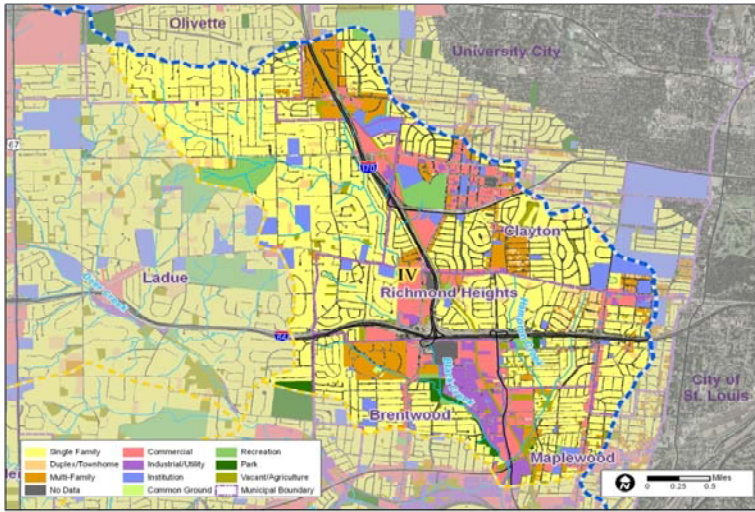
No Data = Transportation
 Open Space = Common Ground, Park, Recreation
 Multifamily = Duplex/Townhome, Multi-family
 Vacant Development = Vacant/Agriculture

<u>Subwatershed/Existing Land Use</u>	<u>Number of Parcels</u>	<u>Acres</u>
Lower Deer Creek (No land use data)	26	85.6
Lower Deer Creek Commercial	451	425.8
Lower Deer Creek Common Ground	11	7.3
Lower Deer Creek Duplex/Townhome	126	47.3
Lower Deer Creek Industrial/Utility	178	224.7
Lower Deer Creek Institution	110	250.0
Lower Deer Creek Multi-Family	87	73.0
Lower Deer Creek Park	16	122.3
Lower Deer Creek Recreation	16	272.0
Lower Deer Creek Single Family	12117	3319.4
Lower Deer Creek Vacant/Agriculture	621	187.8

acres	% acres
85.6	1.71
425.8	8.49
7.3	0.15
47.3	0.94
224.7	4.48
250	4.98
73	1.46
122.3	2.44
272	5.42
3319.4	66.19
187.8	3.74
5015.2	100

<u>Soil Type (by Subwatershed)</u>	<u>Acres</u>
Lower Deer Creek FISHPOT-URBAN LAND COMPLEX, 0 TO 5 PERCENT SLOPES	289.9
Lower Deer Creek IVA-URBAN LAND COMPLEX, 1 TO 3 PERCENT SLOPES	462.0
Lower Deer Creek MENFRO SILT LOAM, 5 TO 9 PERCENT SLOPES	18.9
Lower Deer Creek MENFRO SILT LOAM, KARST, 2 TO 14 PERCENT SLOPES	290.2
Lower Deer Creek MENFRO-URBAN LAND COMPLEX, 5 TO 9 PERCENT SLOPES	96.3
Lower Deer Creek PITS, QUARRY	94.0
Lower Deer Creek URBAN LAND, BOTTOM LAND, 0 TO 3 PERCENT SLOPES	152.5
Lower Deer Creek URBAN LAND, UPLAND, 0 TO 5 PERCENT SLOPES	53.8
Lower Deer Creek URBAN LAND-HARVESTER COMPLEX, 0 TO 2 PERCENT SLOPES	99.0
Lower Deer Creek URBAN LAND-HARVESTER COMPLEX, 2 TO 9 PERCENT SLOPES	827.0
Lower Deer Creek URBAN LAND-HARVESTER COMPLEX, 9 TO 30 PERCENT SLOPES	963.6
Lower Deer Creek URBAN LAND-HARVESTER COMPLEX, KARST, 2 TO 9 PERCENT SLOPES	600.4
Lower Deer Creek WILBUR SILT LOAM, FREQUENTLY FLOODED	13.6
Lower Deer Creek WINFIELD SILT LOAM, 5 TO 9 PERCENT SLOPES	35.0
Lower Deer Creek WINFIELD SILT LOAM, 9 TO 14 PERCENT SLOPES	0.5
Lower Deer Creek WINFIELD-URBAN LAND COMPLEX, 2 TO 5 PERCENT SLOPES	531.0
Lower Deer Creek WINFIELD-URBAN LAND COMPLEX, 5 TO 9 PERCENT SLOPES	953.8
Lower Deer Creek WINFIELD-URBAN LAND COMPLEX, 9 TO 20 PERCENT SLOPES	220.4

Black Creek Subwatershed



No Data = Transportation
 Open Space = Common Ground, Park, Recreation
 Multifamily = Duplex/Townhome, Multi-family
 Vacant Development = Vacant/Agriculture

<u>Subwatershed/Existing Land Use</u>	<u>Number of Parcels</u>	<u>Acres</u>	acres	% acres
Black Creek (No land use data)	63	60.4	60.4	1.24
Black Creek Commercial	507	476.6	476.6	9.78
Black Creek Common Ground	40	20.7	20.7	0.42
Black Creek Duplex/Townhome	484	120.2	120.2	2.47
Black Creek Industrial/Utility	211	181.8	181.8	3.73
Black Creek Institution	103	315.3	315.3	6.47
Black Creek Multi-Family	547	349.0	349	7.16
Black Creek Park	8	121.5	121.5	2.49
Black Creek Recreation	13	234.2	234.2	4.81
Black Creek Single Family	8894	2809.3	2809.3	57.67
Black Creek Vacant/Agriculture	483	182.2	182.2	3.74
			4871.2	100

<u>Soil Type (by Subwatershed)</u>	<u>Acres</u>
Black Creek FISHPOT-URBAN LAND COMPLEX, 0 TO 5 PERCENT SLOPES	476.3
Black Creek FREEBURG SILT LOAM, 2 TO 5 PERCENT SLOPES, OCCASIONALLY FLOODED	16.3
Black Creek IVA-URBAN LAND COMPLEX, 1 TO 3 PERCENT SLOPES	175.2
Black Creek MENFRO SILT LOAM, KARST, 2 TO 14 PERCENT SLOPES	27.9
Black Creek MENFRO-URBAN LAND COMPLEX, 5 TO 9 PERCENT SLOPES	259.0
Black Creek MENFRO-URBAN LAND COMPLEX, 9 TO 20 PERCENT SLOPES	28.6
Black Creek URBAN LAND, BOTTOM LAND, 0 TO 3 PERCENT SLOPES	358.8
Black Creek URBAN LAND, UPLAND, 0 TO 5 PERCENT SLOPES	361.6
Black Creek URBAN LAND-HARVESTER COMPLEX, 0 TO 2 PERCENT SLOPES	49.1
Black Creek URBAN LAND-HARVESTER COMPLEX, 2 TO 9 PERCENT SLOPES	1914.2
Black Creek URBAN LAND-HARVESTER COMPLEX, 9 TO 30 PERCENT SLOPES	406.6
Black Creek URBAN LAND-HARVESTER COMPLEX, KARST, 2 TO 9 PERCENT SLOPES	181.8
Black Creek WINFIELD SILT LOAM, 2 TO 5 PERCENT SLOPES	3.4
Black Creek WINFIELD SILT LOAM, 5 TO 9 PERCENT SLOPES	41.3
Black Creek WINFIELD-URBAN LAND COMPLEX, 2 TO 5 PERCENT SLOPES	396.2
Black Creek WINFIELD-URBAN LAND COMPLEX, 5 TO 9 PERCENT SLOPES	639.2
Black Creek WINFIELD-URBAN LAND COMPLEX, 9 TO 20 PERCENT SLOPES	405.1