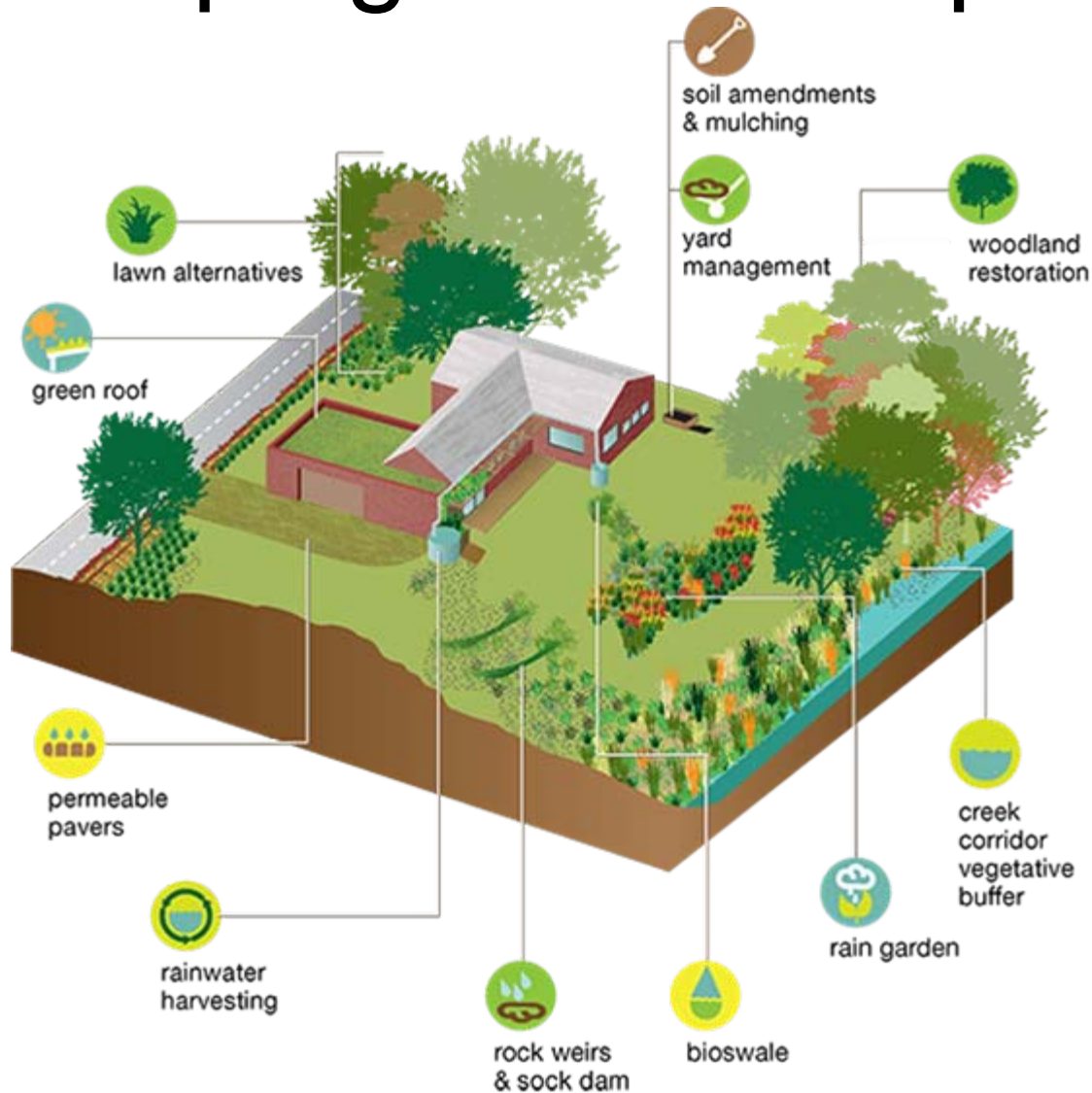


RainScaping Cost Comparisons



Permeable Paving per 100 square ft. Installed

Permeable Paver Costs			
	Basic	Better	Best
Permeable Paver - Material Prices	\$405 -\$486	\$474 -\$566	\$555 -\$635
Permeable Paver - Installation Cost	\$544 -\$919	\$854 -\$1,249	\$1,173 -\$1,695
Permeable Paver - Total	\$949 -\$1,404	\$1,328 -\$1,815	\$1,727 -\$2,330
Permeable Paver - Total Average Cost per square foot	\$11.76	\$15.72	\$20.29



Rainwater Cisterns

Installation not included

MATERIAL	COST, Small System	COST, Large system
galvanized steel	\$225 for 200 gallons	\$950 for 2000 gallons
polyethylene	\$160 for 165 gallons	\$1100 for 1800 gallons
fiberglass	\$660 for 350 gallons	\$10,000 for 10,000 gallons
fiberglass/steel composite	\$300 for 300 gallons	\$10,000 for 5000 gallons
aluminum	Cost prohibitive for water use	Cost prohibitive for water use



Rain Barrel

Installation not included

<i>ITEM</i>		<i>COST</i>
Rain Barrel with sealed top		\$120
Overflow Kit/Runoff pipe		\$35
Rain Diverter		\$18
Soaker Hose		\$21
Linking Kit		\$12
Spigot, if not supplied		\$5
Additional Guttering		\$5
TOTAL ESTIMATED COST:		\$216

Residential Rain Garden and/or Bioswale



10 x 15 ft., dug 6 in. deep, no drains, use of existing soil

Size and Installation	Cost per Sq. Ft.	Total Cost
150 sq. ft. self-installation	\$3-\$5/sq. ft.	\$450 - \$750
150 sq. ft. Installed	\$12-\$16/sq. ft.	\$1,800 - \$2,400

Turf Conversion to Perennial and/or Shrub Planting Bed



Per 150 sq. ft. (10 x 15 ft)

Size and Installation	Cost per Sq. Ft.	Total Cost
150 sq. ft. self-installation	\$3-\$5/sq. ft.	\$450 - \$750
150 sq. ft. Installed	\$10-\$14/sq. ft.	\$1,500 - \$2,100