

S  
A  
M  
P  
L  
E  
B  
A  
L  
L  
O  
T

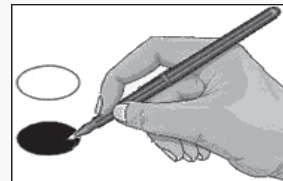
# Caldwell County Republican Party

Caldwell County, North Carolina

November 3, 2020

### BALLOT MARKING INSTRUCTIONS:

- A. With the marking device provided or a black ball point pen, completely fill in the oval to the left of each candidate or selection of your choice as shown.
- B. Where authorized, you may write in a candidate by filling in the oval and writing the name on the Write-in line.
- C. If you tear, deface or wrongly mark this ballot, return it to request a replacement.



FEDERAL OFFICES	STATE OFFICES	
		<b>NC Commissioner of Insurance</b> (You may vote for ONE)
<b>President and Vice President of the United States</b> (You may vote for ONE)	<b>NC Governor</b> (You may vote for ONE)	<input checked="" type="radio"/> <b>MIKE CAUSEY</b> <i>Republican</i> <input type="radio"/> <b>Wayne Goodwin</b> Democrat
<input checked="" type="radio"/> <b>DONALD J. TRUMP</b> <b>MICHAEL R. PENCE</b> <i>Republican</i>	<input type="radio"/> <b>Al Pisano</b> Constitution	<b>NC Commissioner of Labor</b> (You may vote for ONE)
<input type="radio"/> <b>Joseph R. Biden</b> <b>Kamala D. Harris</b> Democrat	<input type="radio"/> <b>Roy Cooper</b> Democrat	<input checked="" type="radio"/> <b>JOSH DOBSON</b> <i>Republican</i>
<input type="radio"/> <b>Don Blankenship</b> <b>William Mohr</b> Constitution	<input type="radio"/> <b>Steven J. DiFiore</b> Libertarian	<input type="radio"/> <b>Jessica Holmes</b> Democrat
<input type="radio"/> <b>Howie Hawkins</b> <b>Angela Walker</b> Green	<b>NC Lieutenant Governor</b> (You may vote for ONE)	<b>NC Secretary of State</b> (You may vote for ONE)
<input type="radio"/> <b>Jo Jorgensen</b> <b>Jeremy (Spike) Cohen</b> Libertarian	<input checked="" type="radio"/> <b>MARK ROBINSON</b> <i>Republican</i>	<input checked="" type="radio"/> <b>E.C. SYKES</b> <i>Republican</i>
<input type="radio"/> Write-in	<input type="radio"/> <b>Yvonne Lewis Holley</b> Democrat	<input type="radio"/> <b>Elaine Marshall</b> Democrat
<b>US Senate</b> (You may vote for ONE)	<b>NC Attorney General</b> (You may vote for ONE)	<b>NC Superintendent of Public Instruction</b> (You may vote for ONE)
<input checked="" type="radio"/> <b>THOM TILLIS</b> <i>Republican</i>	<input checked="" type="radio"/> <b>JIM O'NEILL</b> <i>Republican</i>	<input checked="" type="radio"/> <b>CATHERINE TRUITT</b> <i>Republican</i>
<input type="radio"/> <b>Shannon W. Bray</b> Libertarian	<input type="radio"/> <b>Josh Stein</b> Democrat	<input type="radio"/> <b>Jen Mangrum</b> Democrat
<input type="radio"/> <b>Cal Cunningham</b> Democrat	<b>NC Auditor</b> (You may vote for ONE)	<b>NC Treasurer</b> (You may vote for ONE)
<input type="radio"/> <b>Kevin E. Hayes</b> Constitution	<input checked="" type="radio"/> <b>ANTHONY WAYNE (TONY) STREET</b> <i>Republican</i>	<input type="radio"/> <b>Ronnie Chatterji</b> Democrat
<b>US House of Representatives District 5</b> (You may vote for ONE)	<input type="radio"/> <b>Beth A. Wood</b> Democrat	<input checked="" type="radio"/> <b>DALE R. FOLWELL</b> <i>Republican</i>
<input type="radio"/> <b>David Wilson Brown</b> Democrat	<b>NC Commissioner of Agriculture</b> (You may vote for ONE)	<b>NC Supreme Court Chief Justice Seat 1</b> (You may vote for ONE)
<input checked="" type="radio"/> <b>VIRGINIA FOXX</b> <i>Republican</i>	<input checked="" type="radio"/> <b>STEVE TROXLER</b> <i>Republican</i>	<input type="radio"/> <b>Cheri Beasley</b> Democrat
<input type="radio"/> <b>Jeff Gregory</b> Constitution	<input type="radio"/> <b>Jenna Wadsworth</b> Democrat	<input checked="" type="radio"/> <b>PAUL NEWBY</b> <i>Republican</i>
		Continue voting next side

<p>NC Supreme Court Associate Justice Seat 2 (You may vote for ONE)</p>	<p>NC State Senate District 46 (You may vote for ONE)</p>	<p><b>NONPARTISAN OFFICES</b></p>
<p><input checked="" type="radio"/> <b>PHIL BERGER, JR.</b> <i>Republican</i></p> <p><input type="radio"/> Lucy Inman Democrat</p>	<p><input type="radio"/> Edward Phifer Democrat</p> <p><input checked="" type="radio"/> <b>WARREN DANIEL</b> <i>Republican</i></p>	<p>Board of Education (You may vote for THREE)</p>
<p>NC Supreme Court Associate Justice Seat 4 (You may vote for ONE)</p>	<p>NC House of Representatives District 87 (You may vote for ONE)</p>	<p><input type="radio"/> <b>DARRELL CLAYTON PENNELL</b> <i>Republican</i></p> <p><input type="radio"/> Elaine Setzer-Maxwell</p> <p><input type="radio"/> Mike Vincent</p>
<p><input checked="" type="radio"/> <b>TAMARA BARRINGER</b> <i>Republican</i></p> <p><input type="radio"/> Mark Davis Democrat</p>	<p><input type="radio"/> Corie Schreiber Democrat</p> <p><input checked="" type="radio"/> <b>DESTIN HALL</b> <i>Republican</i></p>	<p><input type="radio"/> <b>CHRISTOPHER BECKER</b> <i>Republican</i></p> <p><input type="radio"/> <b>ANN B. EDWARDS</b> <i>Republican</i></p> <p><input type="radio"/> <b>WILLIAM (BJ) FORE</b> <i>Republican</i></p>
<p>NC Court of Appeals Judge Seat 4 (You may vote for ONE)</p>	<p><b>DISTRICT OFFICES</b></p>	
<p><input type="radio"/> Tricia Shields Democrat</p> <p><input checked="" type="radio"/> <b>APRIL C. WOOD</b> <i>Republican</i></p>	<p>NC District Court Judge District 25 Seat 8 (You may vote for ONE)</p> <p><input checked="" type="radio"/> <b>BURFORD A. CHERRY</b> <i>Republican</i></p>	<p><input type="radio"/> Sarah Greer Koenig</p> <p><input type="radio"/> Write-in _____</p> <p><input type="radio"/> Write-in _____</p> <p><input type="radio"/> Write-in _____</p>
<p>NC Court of Appeals Judge Seat 5 (You may vote for ONE)</p>	<p>NC District Court Judge District 25 Seat 9 (You may vote for ONE)</p>	<p>Soil and Water Conservation District Supervisor (You may vote for ONE)</p>
<p><input type="radio"/> Lora Christine Cabbage Democrat</p> <p><input checked="" type="radio"/> <b>FRED GORE</b> <i>Republican</i></p>	<p><input checked="" type="radio"/> <b>RICHARD S. HOLLOWAY</b> <i>Republican</i></p>	<p><input checked="" type="radio"/> <b>ALLEN TOLBERT</b> <i>Republican</i></p> <p><input type="radio"/> John E. Card</p>
<p>NC Court of Appeals Judge Seat 6 (You may vote for ONE)</p>	<p>NC District Court Judge District 25 Seat 10 (You may vote for ONE)</p>	<p><input type="radio"/> Write-in _____</p>
<p><input type="radio"/> Gray Styers Democrat</p> <p><input checked="" type="radio"/> <b>CHRIS DILLON</b> <i>Republican</i></p>	<p><input checked="" type="radio"/> <b>ANDREA CHIZ PLYLER</b> <i>Republican</i></p>	<p>End of Ballot</p>
<p>NC Court of Appeals Judge Seat 7 (You may vote for ONE)</p>	<p><b>COUNTY OFFICES</b></p>	
<p><input type="radio"/> Reuben F. Young Democrat</p> <p><input checked="" type="radio"/> <b>JEFF CARPENTER</b> <i>Republican</i></p>	<p>Board of Commissioners (You may vote for THREE)</p> <p><input type="radio"/> Michael R. Sloan Democrat</p> <p><input checked="" type="radio"/> <b>ROBBIE WILKIE</b> <i>Republican</i></p> <p><input checked="" type="radio"/> <b>JEFF BRANCH</b> <i>Republican</i></p> <p><input checked="" type="radio"/> <b>RANDY T. CHURCH</b> <i>Republican</i></p>	<p><i>For more information call</i></p>
<p>NC Court of Appeals Judge Seat 13 (You may vote for ONE)</p>	<p>Register of Deeds (You may vote for ONE)</p>	<p><b>Caldwell County Republican Party</b></p>
<p><input type="radio"/> Chris Brook Democrat</p> <p><input checked="" type="radio"/> <b>JEFFERSON G. GRIFFIN</b> <i>Republican</i></p>	<p><input checked="" type="radio"/> <b>WAYNE L. RASH</b> <i>Republican</i></p>	<p><b>828-572-2018</b></p>

**S  
A  
M  
P  
L  
E  
B  
A  
L  
L  
O  
T**

-- VOTE BOTH SIDES --