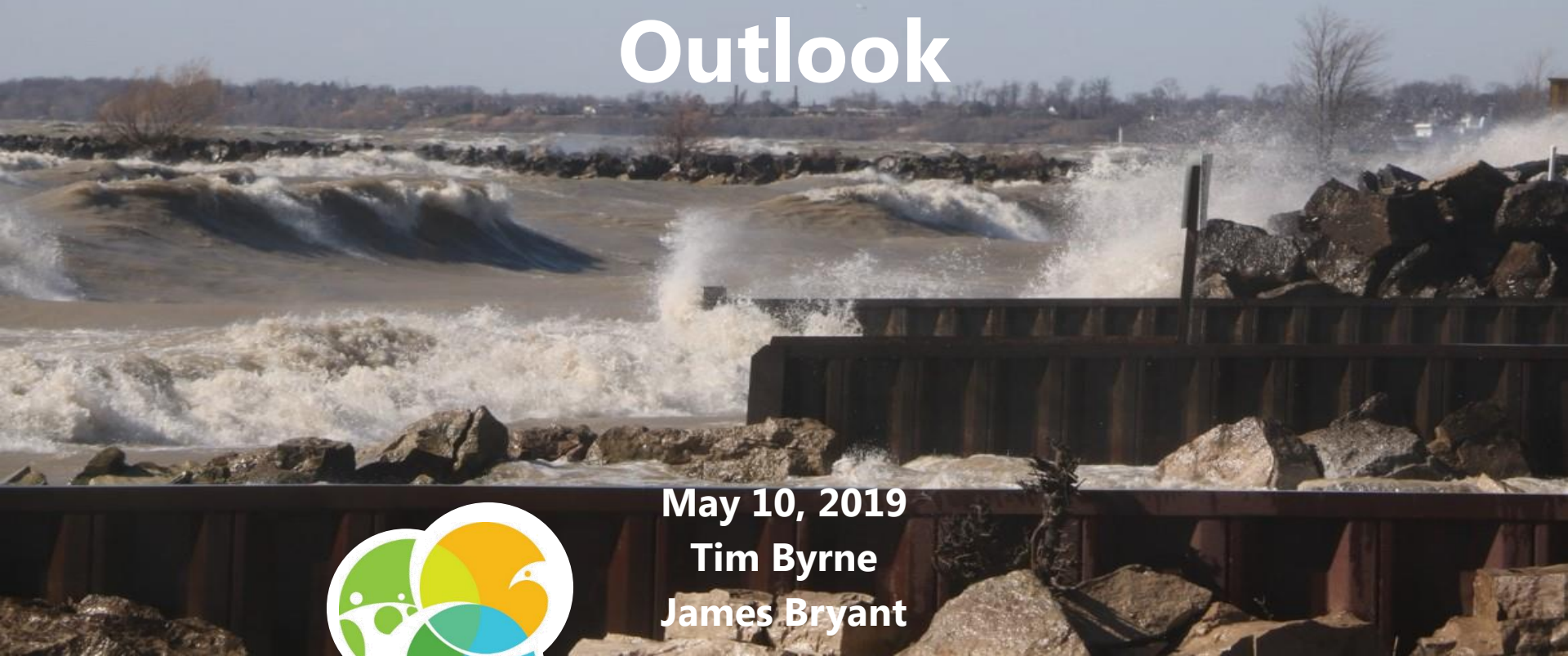


GREAT LAKES WATER LEVELS

Current Conditions and Outlook



May 10, 2019

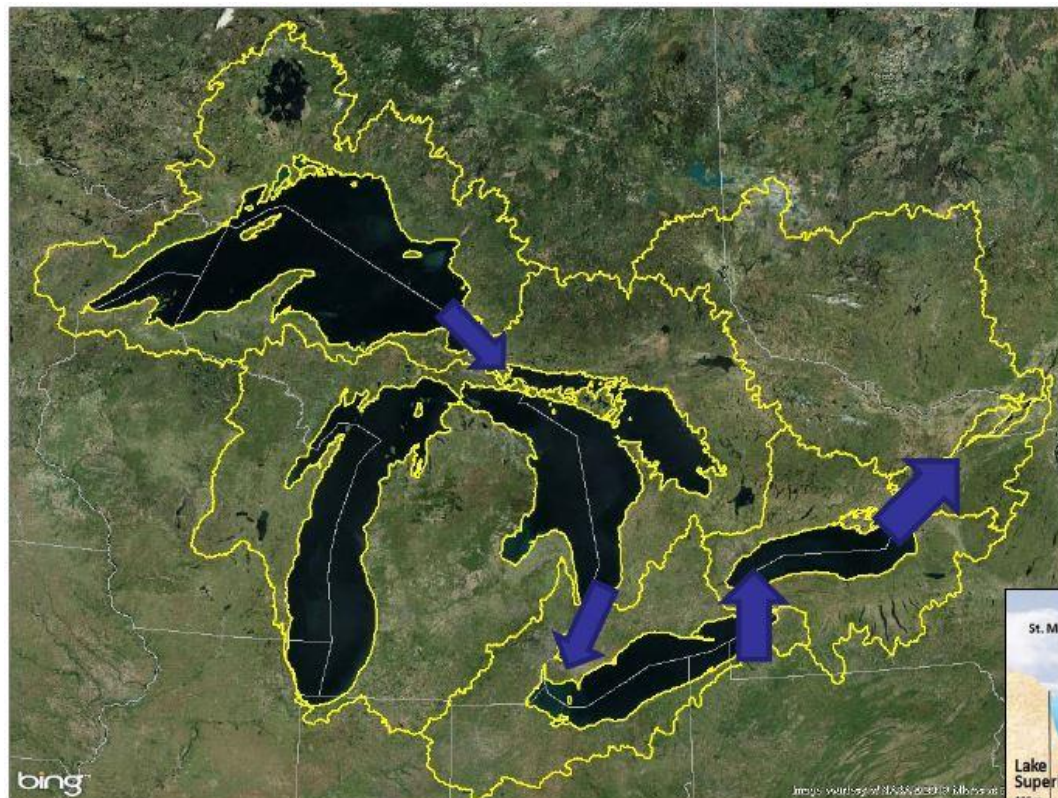
Tim Byrne

James Bryant

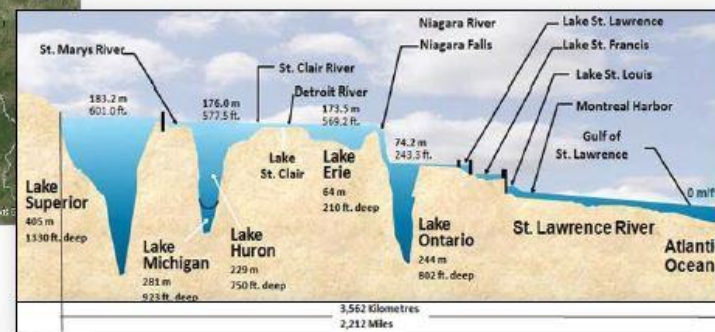


Essex Region
Conservation Authority
sustaining the place for life

The Great Lakes – St. Lawrence System



	Surface Area
Superior	82,100 km ²
Michigan-Huron	117,000 km ²
Erie	25,700 km ²
Ontario	19,000 km ²
	Volume
Superior	12,100 km ³
Michigan-Huron	8,460 km ³
Erie	484 km ³
Ontario	1,640 km ³



Environment and
Climate Change Canada

Environnement et
Changement climatique Canada

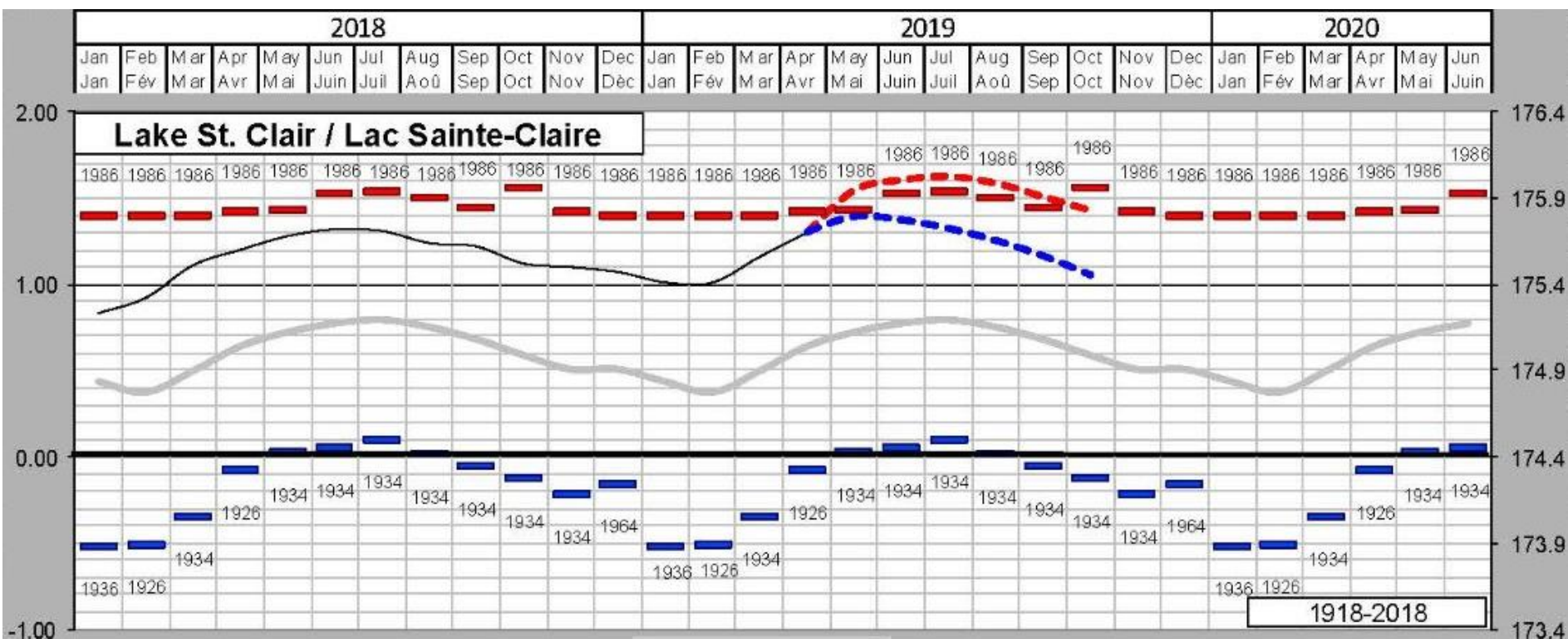
Canada



IJC Great Lakes Boards of Control



Current Water Levels



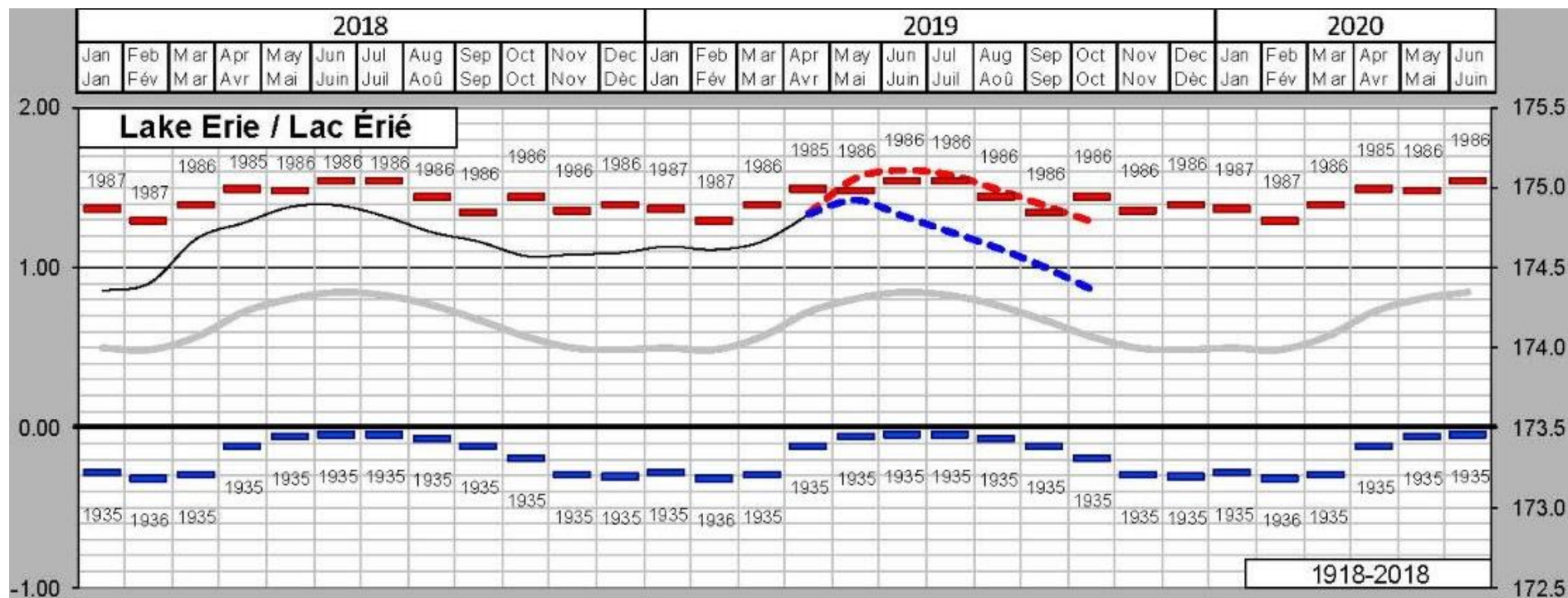
Environment and
Climate Change Canada

Environnement et
Changement climatique Canada

Canada



Current Water Levels



Environment and
Climate Change Canada

Environnement et
Changement climatique Canada

Canada



Great Lakes Levels

Great Lakes water level information: beginning-of-March 2019 level

Lake	Compared to beginning-of-month average (1918-2017)	Compared to one year ago
Superior	34 cm above	Same
Michigan-Huron	57 cm above	6 cm above
St. Clair	72 cm above	4 cm below
Erie	63 cm above	4 cm above
Ontario	37 cm above	4 cm above



Environment and
Climate Change Canada

Environnement et
Changement climatique Canada

Canada



Great Lakes Outflow Data

February outflows from the Great Lakes ^a

Lake	%
Lake Superior	135%
Lake Michigan-Huron	118%
Lake Erie	125%
Lake Ontario	126%

^a As a percentage of February long-term average.

^b United States Army Corps of Engineers

Note : These figures are preliminary.



Environment and
Climate Change Canada

Environnement et
Changement climatique Canada

Canada



Great Lakes Precipitation Data

February precipitation over the Great Lakes ^{a,b}

Lake	%
Great Lakes Basin	139%
Lake Superior	172%
Lake Michigan-Huron	143%
Lake Erie (including Lake St. Clair)	114%
Lake Ontario	105%

^a As a percentage of February long-term average.

^b United States Army Corps of Engineers

Note : These figures are preliminary.



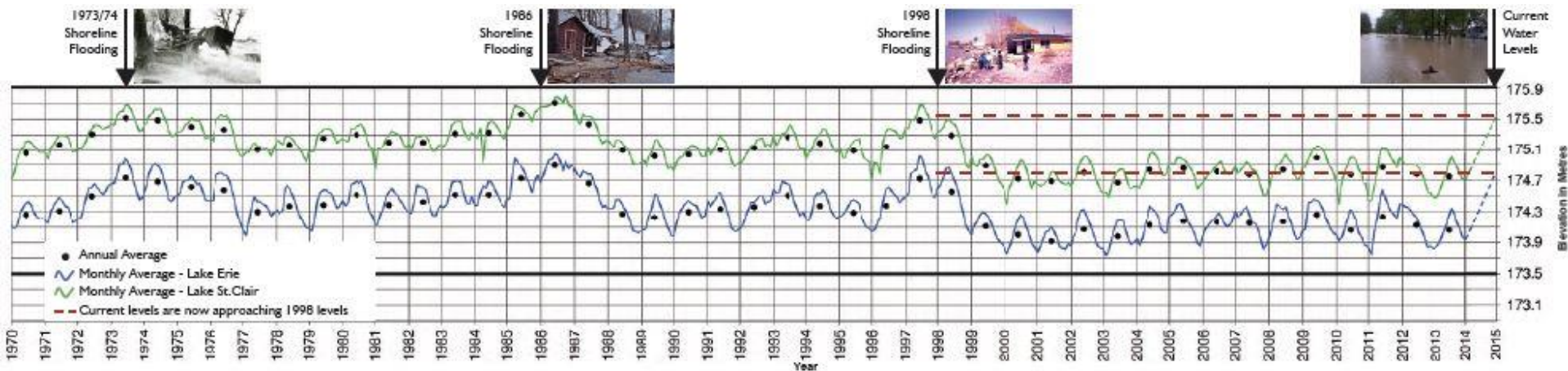
Environment and
Climate Change Canada

Environnement et
Changement climatique Canada

Canada



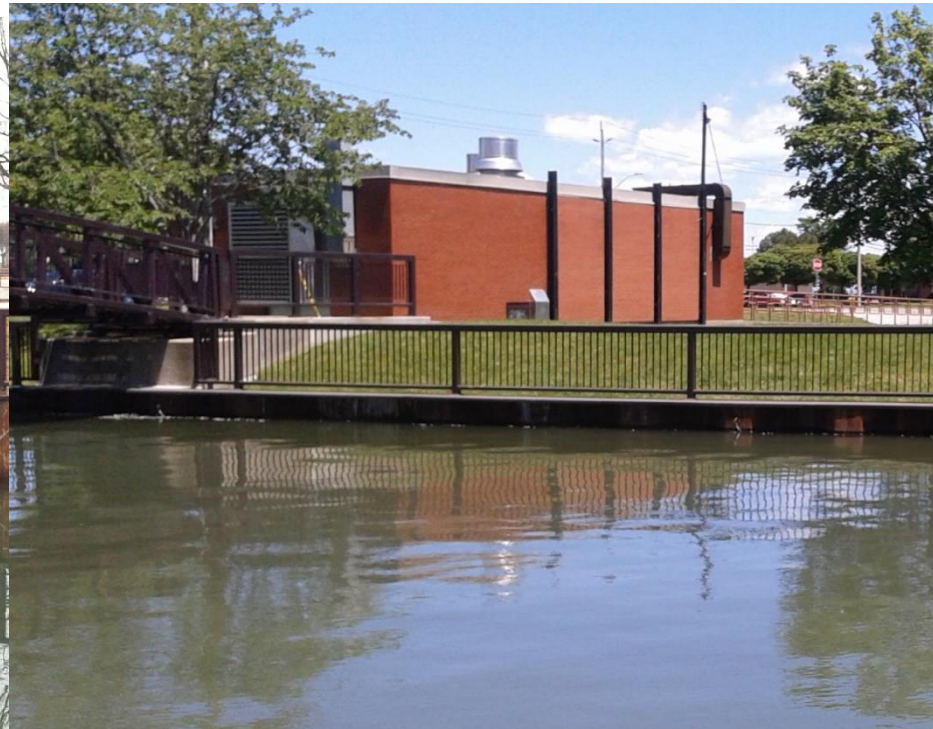
Lake Erie and Lake St. Clair



Little River – Little River Pump Station at Riverside Drive



March 2015



June 2017



Wind and Lake Flooding



Flood Watch/Warning



FLOOD WATCH

The Essex Region Conservation Authority advises that, due to predicted winds out of the southwest blowing at 30 to 40 kph, with potential gusts to 70 kph, the possibility of shoreline erosion and flooding resulting from wave overtopping breakwalls and resulting spray exists within the region particularly for areas in the east limit of the Town of Essex, the Town of Kingsville and the western portions of the Municipality of Leamington west of Point Pelee National Park and the west side of Pelee Island.

People should take extra caution and avoid shoreline areas. Waves overtopping breakwalls/shorelines can be extremely dangerous. Standing water can also present its own unseen hazards. Children, pets and livestock should be kept away from flowing water, standing water and breakwall/shoreline areas.

Weather forecasts will continue to be monitored and updates provided as required.



FLOOD WARNING

The Essex Region Conservation Authority advises that, the previously issued Watershed Conditions Statement – Water Safety (issued at 4:00 pm on Friday, May 19, 2017) has been upgraded to a **FLOOD WARNING** for portions of the Municipality of Leamington. Due to continuing winds from the east at 30 kph, with gusts to 50 kph, flooding is occurring within the Cotterie Park Road area. In the affected area, portions of the traveled road surface and private lands are covered with water. Flooding, shoreline erosion and damaging waves may also impact other shoreline areas throughout the night along the east shoreline of the Municipality of Leamington between Wheatley Harbour and Point Pelee National Park as the winds continue to blow from the east. The public is advised to avoid these areas. People who must access these areas are advised to use extreme caution when traveling through floodwater.

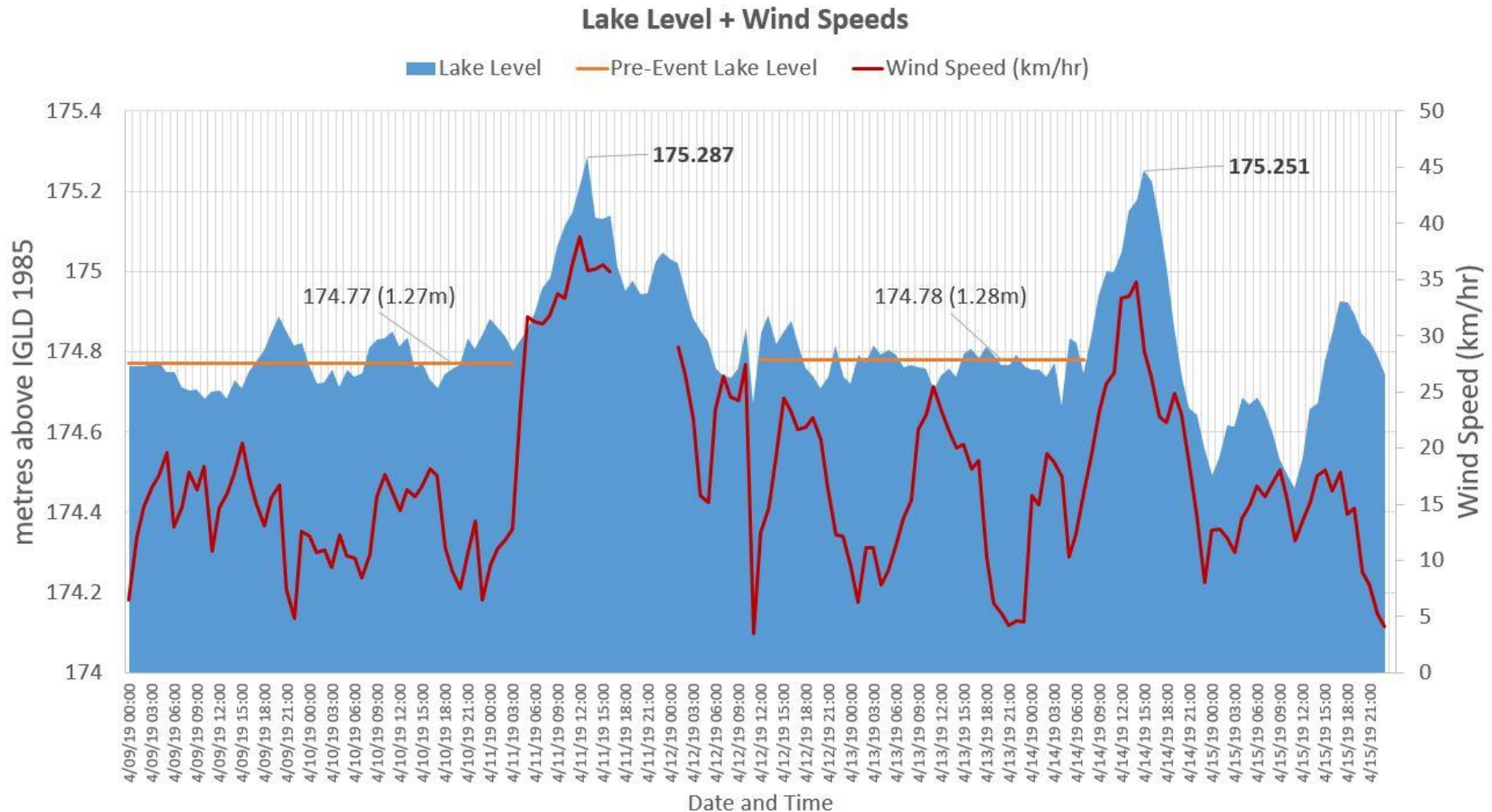
Due to the elevated lake levels and the easterly winds, the Municipality of Leamington should also monitor the dykes in the Southeast Leamington area.

Due to the predicted wind speed and duration, areas along the Detroit River may experience increased water levels due to the lake setup.

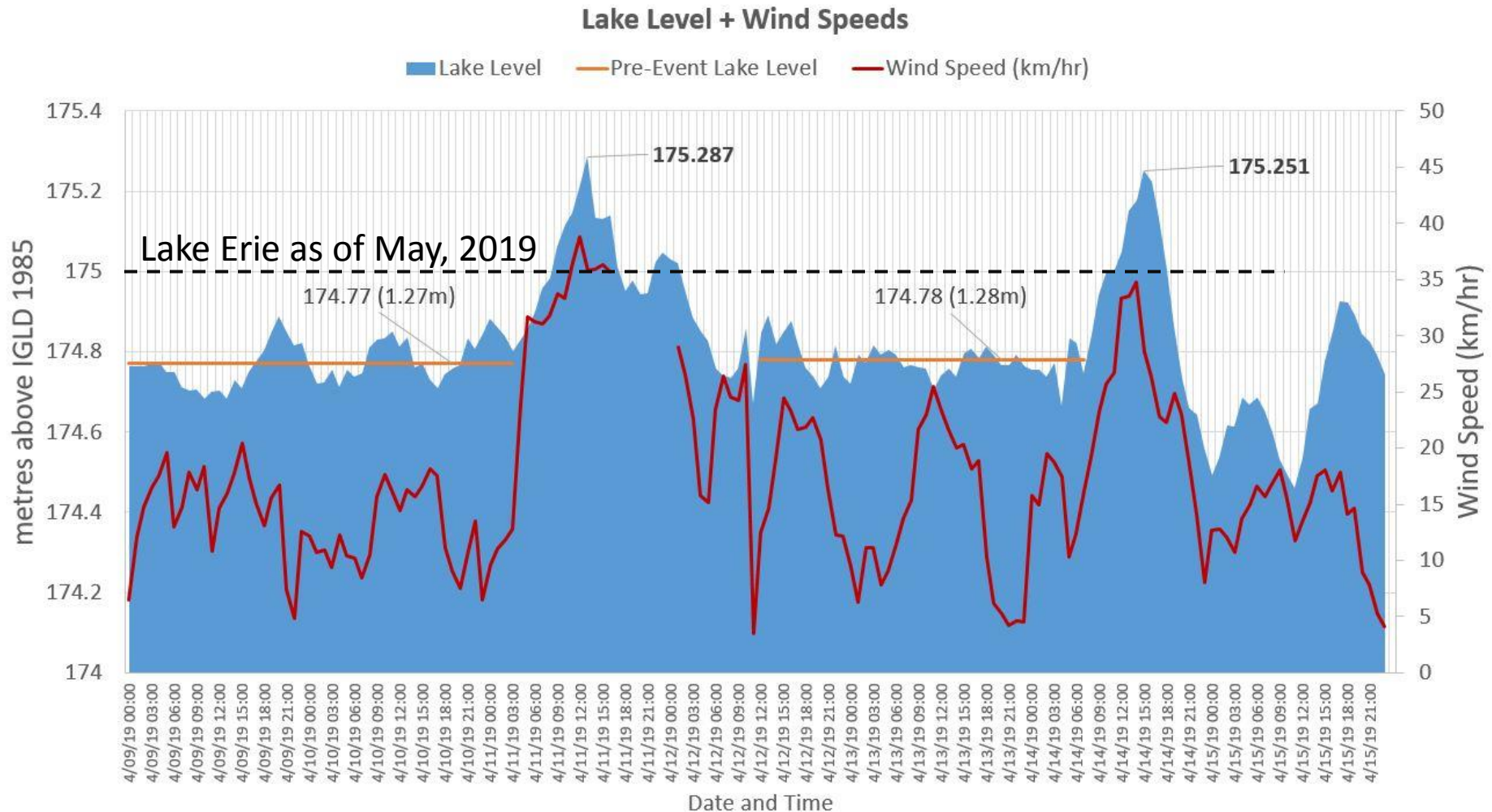
Due to continuing easterly winds, the previously issued Watershed Conditions Statement – Water Safety (issued at 4:00 pm on Friday, May 19, 2017) has been upgraded to a **FLOOD WATCH** for the Lake Erie shoreline on the east side of Pelee Island to include the possibility of



Recent Storm Events (Apr. 11, 14)



Recent Storm Events (Apr. 11, 14)



Recent Storm Events



Lake Erie - Sturgeon Creek Outlet



Recent Storm Events



Lake Erie – Point Pelee Drive



Recent Storm Events



Lake Erie – Cotterie Park Road 2019 (April 11, 14 and May 1, 8, 12)



Recent Storm Events



Lake Erie – Cotterie Park Road (2019)



Recent Storm Events



Lake Erie – Cotterie Park Road (2018)



Recent Storm Events



Lake Erie – Cotterie Park Road (2018)



Recent Storm Events



Lake Erie – Pelee Island



Recent Storm Events



Lake Erie – Pelee Island



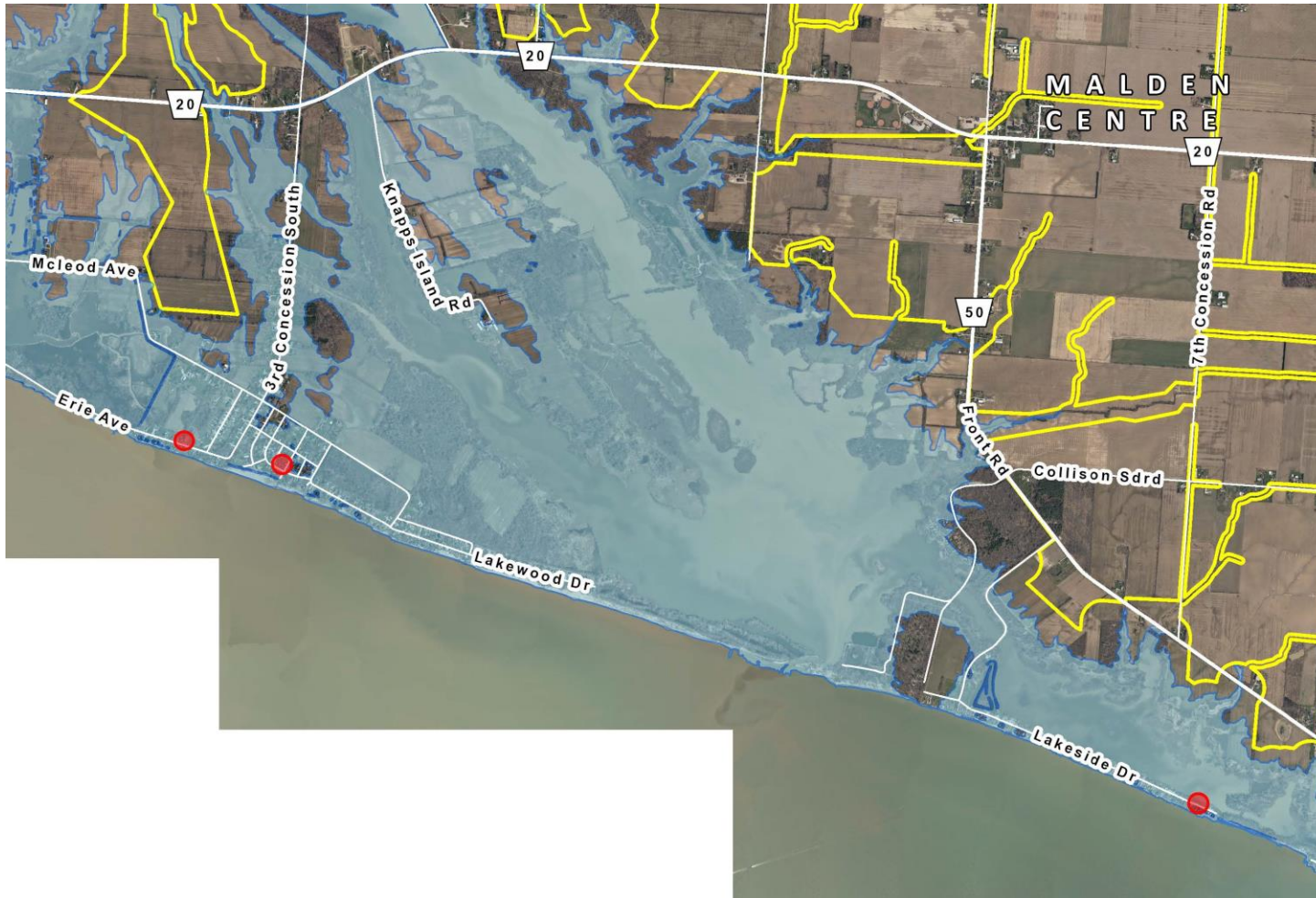
Recent Storm Events



Lake St. Clair



Potential Lake Flooding (key map)



Claremont Lane, Willow Beach, and Lake Erie Country Club



Potential Lake Flooding



Claremont Lane



Potential Lake Flooding



Claremont Lane (visualization)



Potential Lake Flooding



Willow Beach Road



Potential Lake Flooding



Willow Beach Road (visualization)



Potential Lake Flooding



Lake Erie Country Club



Potential Lake Flooding



Lake Erie Country Club (visualization)



Recent Storm Events (Rainfall)



Lesperance Road



Recent Storm Events (Rainfall)



Lesperance Road – one block south of Riverside Drive



Questions

