

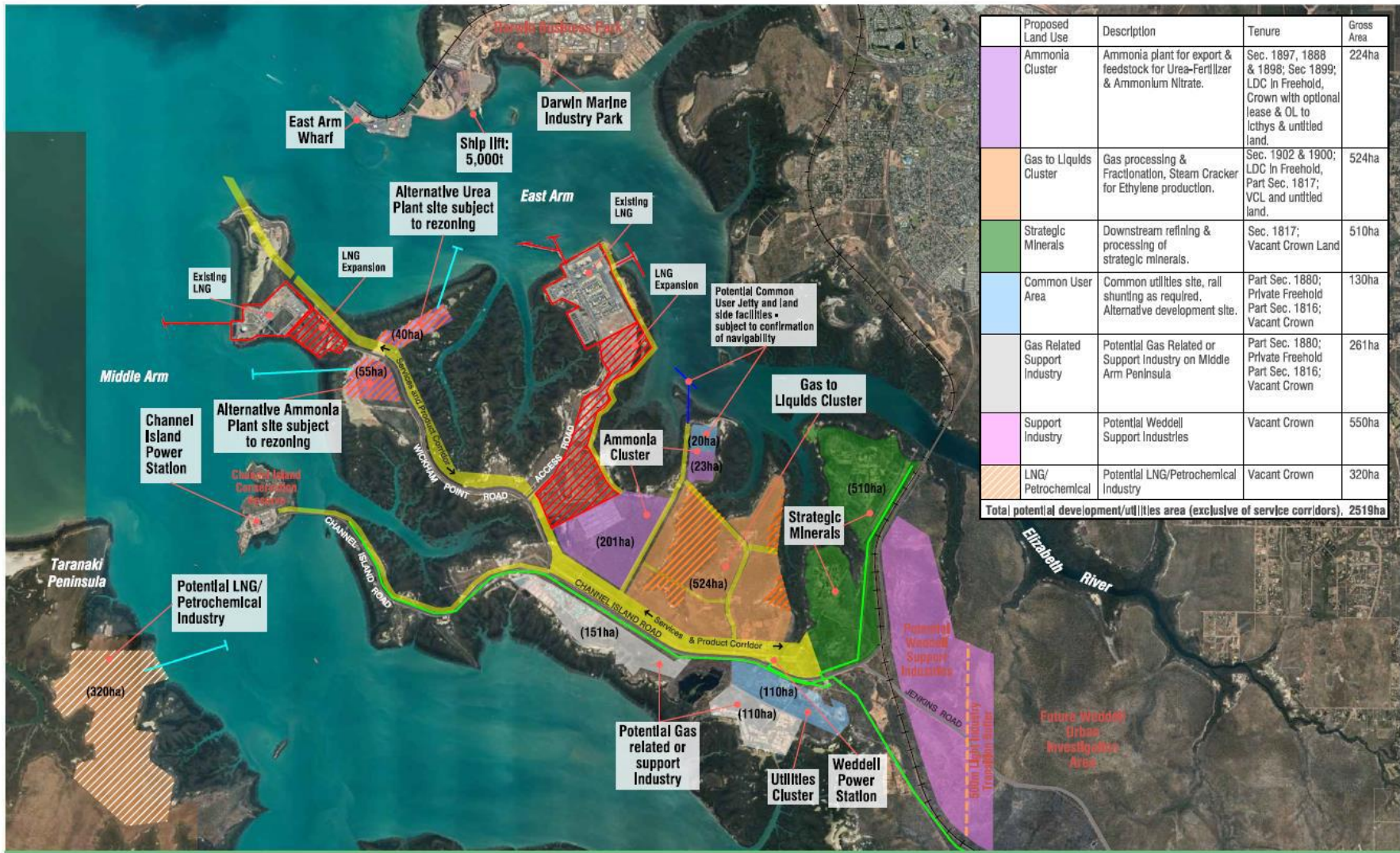
Land Use	Description	Gross Area
Ammonia Cluster	Ammonia plant for export & feedstock for Urea-Fertilizer & Ammonium Nitrate.	224ha
Gas to liquids Cluster	Gas processing & Fractionation, Steam Cracker for Ethylene production,	524ha
Strategic Minerals	Downstream refining & processing of strategic minerals.	510ha
Common Use	Common user area	130ha
Support Industry	Potential gas related or support industry	261ha
Total Area		1649ha

**Gas & Strategic Minerals Industries Precinct
Draft Industry Masterplan-Expanded Area Option
Middle Arm Peninsula SK002-REVD**

- LEGEND**
- Product Corridor
 - Amadeus Gas Pipeline
 - Proposed service & access corridor
 - Primary Storm Surge
 - Proposed Cadastre
 - Existing Cadastre
 - Proposed Splitfire Estate boundary
 - Proposed Kittyhawk Estate boundary
 - Potential Future Infill Subject to Environmental & Planning Considerations/rezoning from Conservation to Development



Plan for internal use only and not for public release. Development precincts identified on this plan are for planning purposes only and no warranty is implied that the natural site conditions are suitable for industrial development or that necessary regulatory approvals will be issued for any development of the identified land.



Proposed Land Use	Description	Tenure	Gross Area
Ammonia Cluster	Ammonia plant for export & feedstock for Urea-Fertilizer & Ammonium Nitrate.	Sec. 1897, 1888 & 1898; Sec 1899; LDC In Freehold, Crown with optional lease & OL to Ichthys & untitled land.	224ha
Gas to Liquids Cluster	Gas processing & Fractionation, Steam Cracker for Ethylene production.	Sec. 1902 & 1900; LDC In Freehold, Part Sec. 1817; VCL and untitled land.	524ha
Strategic Minerals	Downstream refining & processing of strategic minerals.	Sec. 1817; Vacant Crown Land	510ha
Common User Area	Common utilities site, rail shunting as required, Alternative development site.	Part Sec. 1880; Private Freehold Part Sec. 1816; Vacant Crown	130ha
Gas Related Support Industry	Potential Gas Related or Support Industry on Middle Arm Peninsula	Part Sec. 1880; Private Freehold Part Sec. 1816; Vacant Crown	261ha
Support Industry	Potential Weddell Support Industries	Vacant Crown	550ha
LNG/Petrochemical	Potential LNG/Petrochemical Industry	Vacant Crown	320ha
Total potential development/utilities area (exclusive of service corridors), 2519ha			

Gas & Strategic Minerals Industries Precinct
Draft Industry Masterplan - Expanded Area Option
SK004 REV B

LEGEND

- Product Corridor
- Existing Jetty Structure
- Amadeus Gas Pipeline
- Potential Future Infill Subject to Environmental & Planning Considerations/rezoning from Conservation to Development
- Future Common User Jetty
- Future Dedicated Jetty



Plan for internal use only and not for public release. Development precincts identified on this plan are for planning purposes only and no warranty is implied that the natural site conditions are suitable for industrial development or that necessary regulatory approvals will be issued for any development of the identified land.