



Elgin Local Food Network

September 2012

ELGIN WPA MURAL



ELGIN

- Blacklands Prairie
- Sausage Capital of Texas
- Brick Capital of the Southwest
- Texas Main Street City

ELGIN

- 19 miles east of Austin on Hwy. 290
- 8 miles east of Parmer Lane & SH 130
- 30 minutes - Austin Bergstrom Intl. Airport
- 35 minutes – downtown Austin
- Elgin population 8,880
- Greater Elgin area 47,850
- Located in Bastrop & Travis Counties
- Water source: Wilcox Carrizo Aquifer
- City of Elgin Utilities - water & wastewater



A Time for Warm Hearts and Hot Guts

1988 **HOG EYE** 2012

FESTIVAL

ELGIN ★ TEXAS



LOCAL FOOD BUSINESSES

- Coyote Creek Feed Mill
- Jeremiah Cunningham's World's Best Eggs
- Lund Produce Company
- Members RVFM
- Elgin Cotton Oil Mill
- Sunrise Breakfast Tacos
- Southside BBQ Market
- Meyer's Elgin Sausage
- Down Home Ranch
- Bloomers Garden Center

SARE Grant

- \$10,000
- Website
- Education
- Networking
- Data collection

Accomplishments

- Community dialogues
 - Community meeting on October 12, 2011
 - Farmer survey in November 2011
- Research policy options
 - Assessment of agricultural resources in Elgin and Bastrop County
 - Local planning efforts
 - National models
- Outreach and education
 - Local Food Environments maps
 - Elgin Local Food Network website

Results: Community Dialogues

- Strengths
 - Supportive local government
 - Unique identity and history as agricultural hub
- Challenges
 - Restrictive government regulations
 - Development of agricultural land
- Opportunities
 - More jobs in agriculture
 - Buy Local campaign
 - Farmer cooperatives to purchase equipment, and market or transport locally-grown products,
 - Local livestock processing facility

Results: Policy Research

Evaluation of local planning initiatives

- Elgin Comprehensive Plan
- Elgin Parks, Recreation and Open Space Master Plan
- City of Elgin Zoning
- Elgin, TX: 2008 Retail Trade Study
- Opportunity Bastrop County
- Central Texas Greenprint for Growth Conservation and Economic Opportunity for Bastrop County

Examination of programs in other states

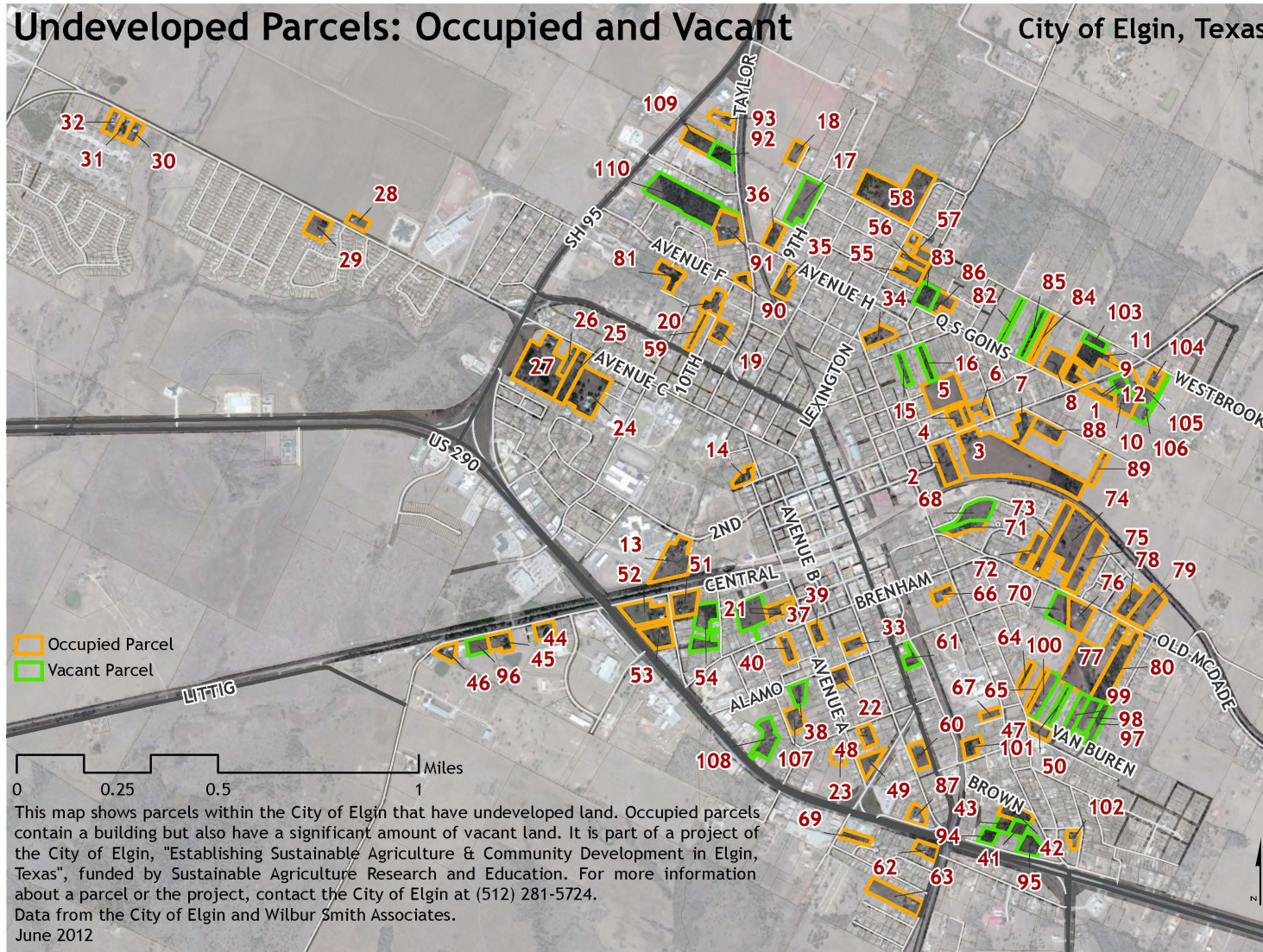
- Montgomery County Department of Economic Development
- Chester County Economic Development Corporation
- Hillsborough County Agriculture Industry Development Program
- Hudson Valley AgriBusiness Development Corporation
- Wayne County Planning Department Agricultural Development
- Madison County Agriculture Economic Development

Results: Policy Research

- Create an urban agriculture zoning code
 - Agriculture
 - Value-Added Agricultural Products and/or Businesses
 - Community Garden
 - Food Production
 - Farmers' Market
 - Sustainable Development
- Adopt incentives for agricultural use
 - Waive fees for water tap installation and wastewater

Undeveloped Parcels: Occupied and Vacant

City of Elgin, Texas



This map shows parcels within the City of Elgin that have undeveloped land. Occupied parcels contain a building but also have a significant amount of vacant land. It is part of a project of the City of Elgin, "Establishing Sustainable Agriculture & Community Development in Elgin, Texas", funded by Sustainable Agriculture Research and Education. For more information about a parcel or the project, contact the City of Elgin at (512) 281-5724. Data from the City of Elgin and Wilbur Smith Associates. June 2012



Partnerships

- River Valley Farmers Market
- City of Elgin
- Main Street Board
- Chamber of Commerce

River Valley Farmers Market

- Downtown at Veterans Memorial Park
- Every Saturday 10am to 2pm
- Growers Certified Texas Farmers Market
- Music, art for the kids, fun!
- Any fresher and you'll have to dig in the dirt yourself!

River Valley Farmers Market



Chef Events

- Raises sales by 45%
- New customers
- Reinvigorated existing customers
- News coverage
- Fun for the farmers



What's different?

- Saturdays
- Music
- Art for the kids
- Advertising – by the market, Main Street Board and the chamber
- More farmers
- More events



Queen-Williams Farm
Elgin, TX



GO TEXAN.

FREAK SHOW

BUTTERNUT SQUASH
\$1.99 LB

Tomatoes

Film Screenings & Conversation

- Vanishing of the Bees
- Fresh
- The Greenhorns
- The Lightbulb Conspiracy
- Call of Life
- Grow!



Austin Community College Elgin Campus



ACC in Elgin

- Silver lead certified campus under construction
- Agriculture curriculum

The logo features the text "SUSTAINABLE PLACES Project" centered over a graphic of a house roof. The background consists of four overlapping rounded rectangles in shades of green, purple, teal, and brown. The entire logo is set against a white background within a larger green textured frame.

SUSTAINABLE
PLACES Project

Sustainable Places Project

- Elgin, Dripping Springs, Hutto, Lockhart
- Housing choice
- Mobility options
- Economic vitality
- Healthy and inclusive communities
- Concentrated and balanced growth
- Environment and natural resources

GET CONNECTED

- Elgin Local Food Network www.elginlocalfoodnetwork.org
- City of Elgin Community Website www.elgintx.com
- Facebook - City of Elgin
- Sustainable Places Project
<http://elgin.sustainableplacesproject.com/>
- City E-Newsletter - www.elgintx.com to subscribe
- Greater Elgin Chamber of Commerce
www.elgintxchamber.com
- Elgin Economic Development Corporation
www.elginedc.com
- Elgin Independent School District www.elginisd.net
- Austin Community College Elgin Campus
<http://www.austincc.edu/elgin/>



Amy Miller
Community Development Director
City of Elgin
amiller@ci.elgin.tx.us
512-281-5724