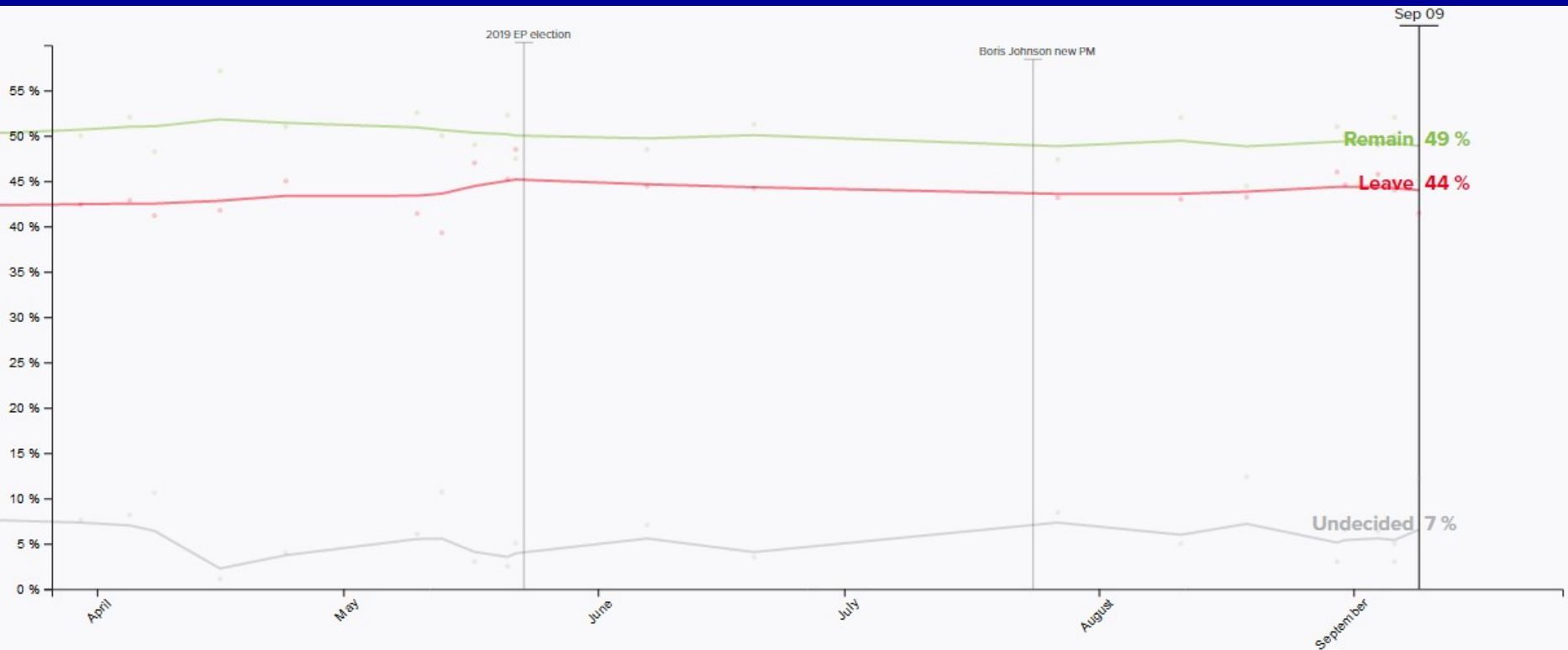




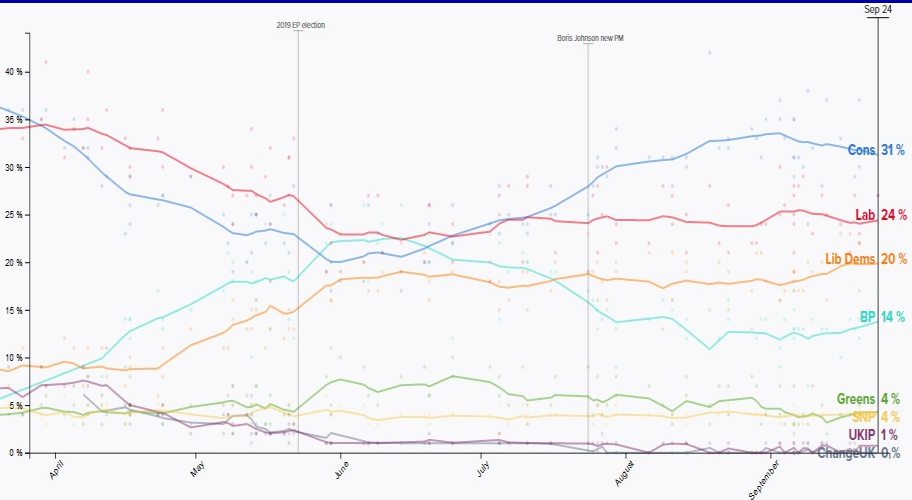
The approaching General Election - Tactics??



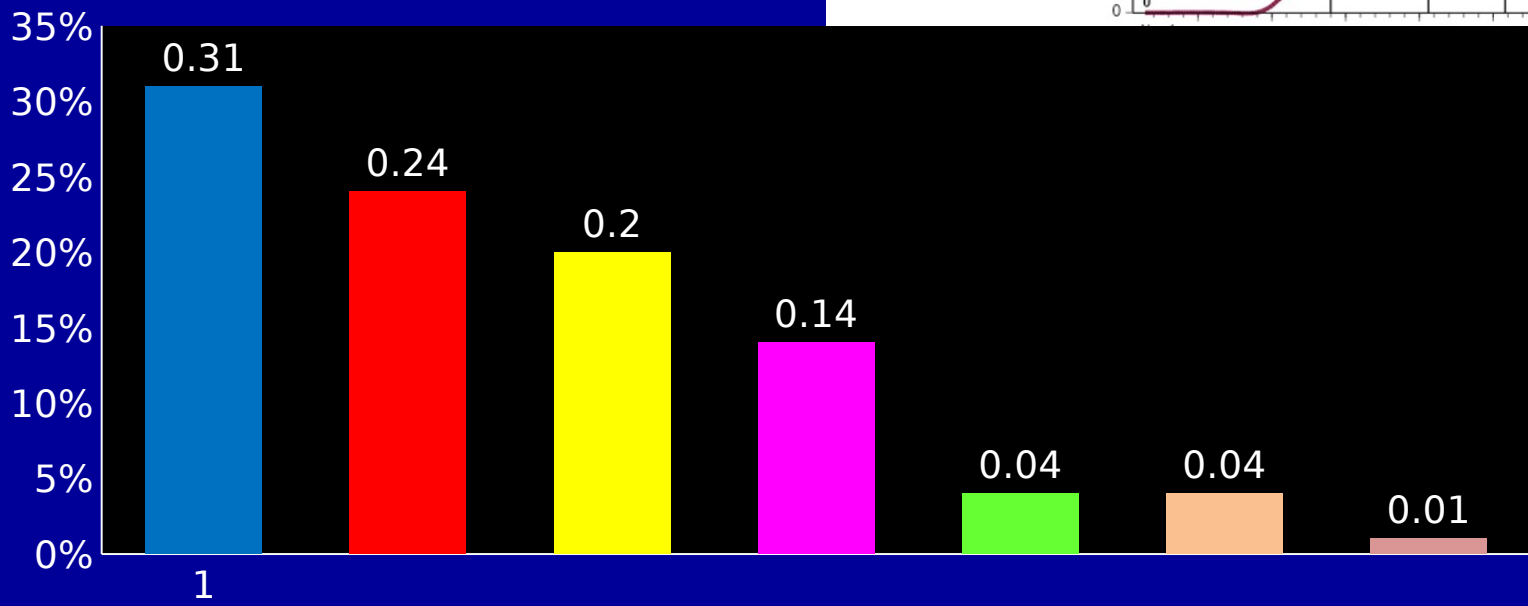
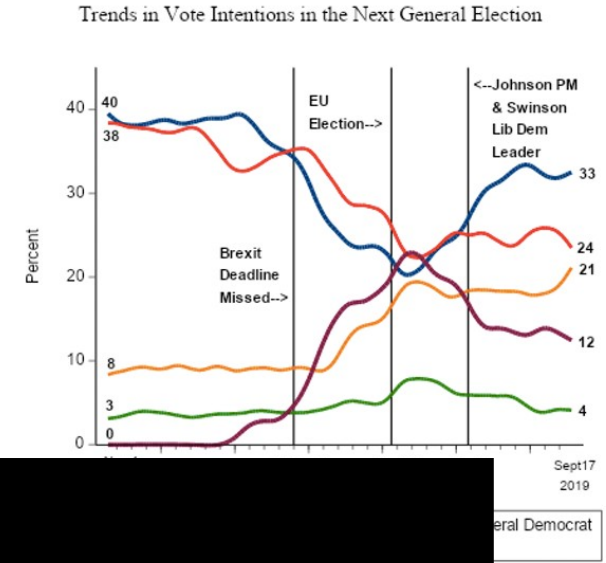
Politico Poll of Polls Second Brexit Referendum



Politico Poll of Polls National Parliament Voting Intention



What are the Polls Saying about a Forthcoming General Election?

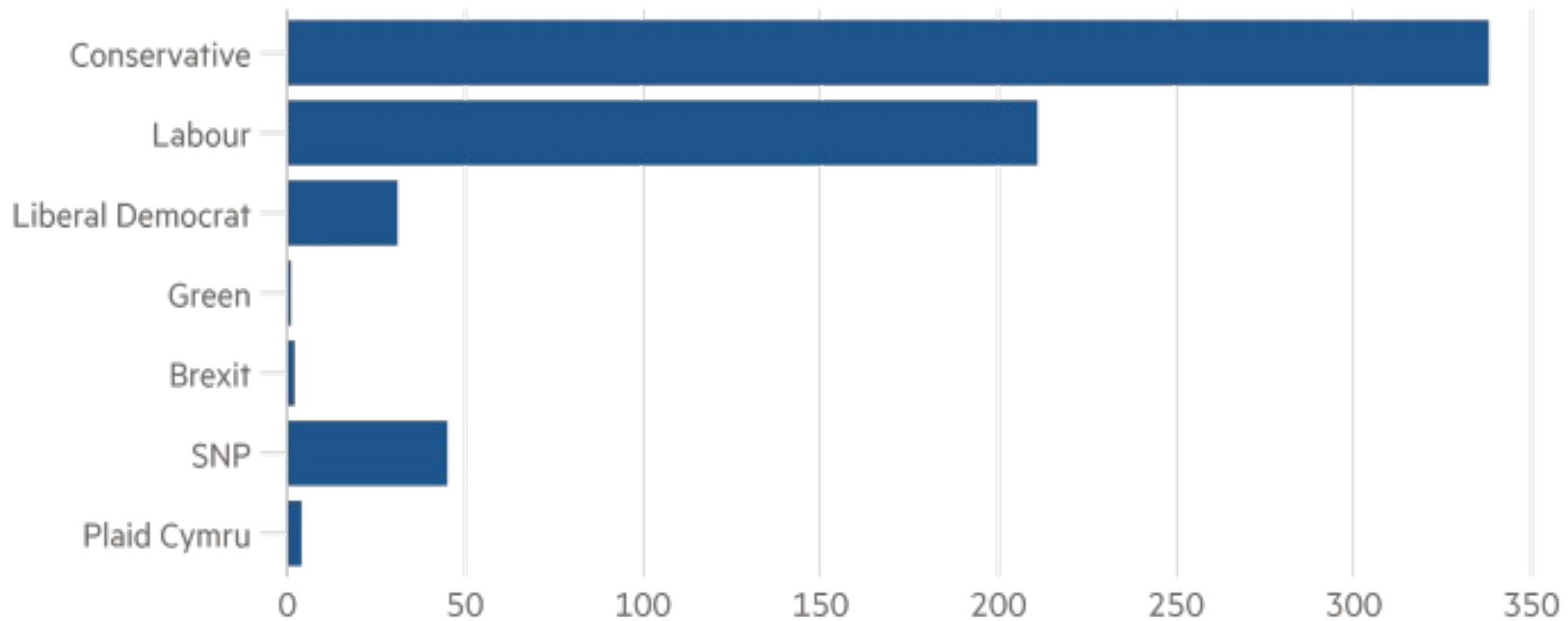


■ CON ■ LAB ■ LIB ■ BP ■ GRE ■ SNP ■ UKP



If the remain parties stay divided the Tories are likely to win a comfortable majority

Projected number of seats assuming no tactical alliance and Conservatives capture half of current Brexit party support



632 Westminster seats excluding Northern Ireland. Projections based on recent polling averages of Conservatives 34%, Labour 23%, Lib Dems 19%, Brexit party 14%, Greens 5%

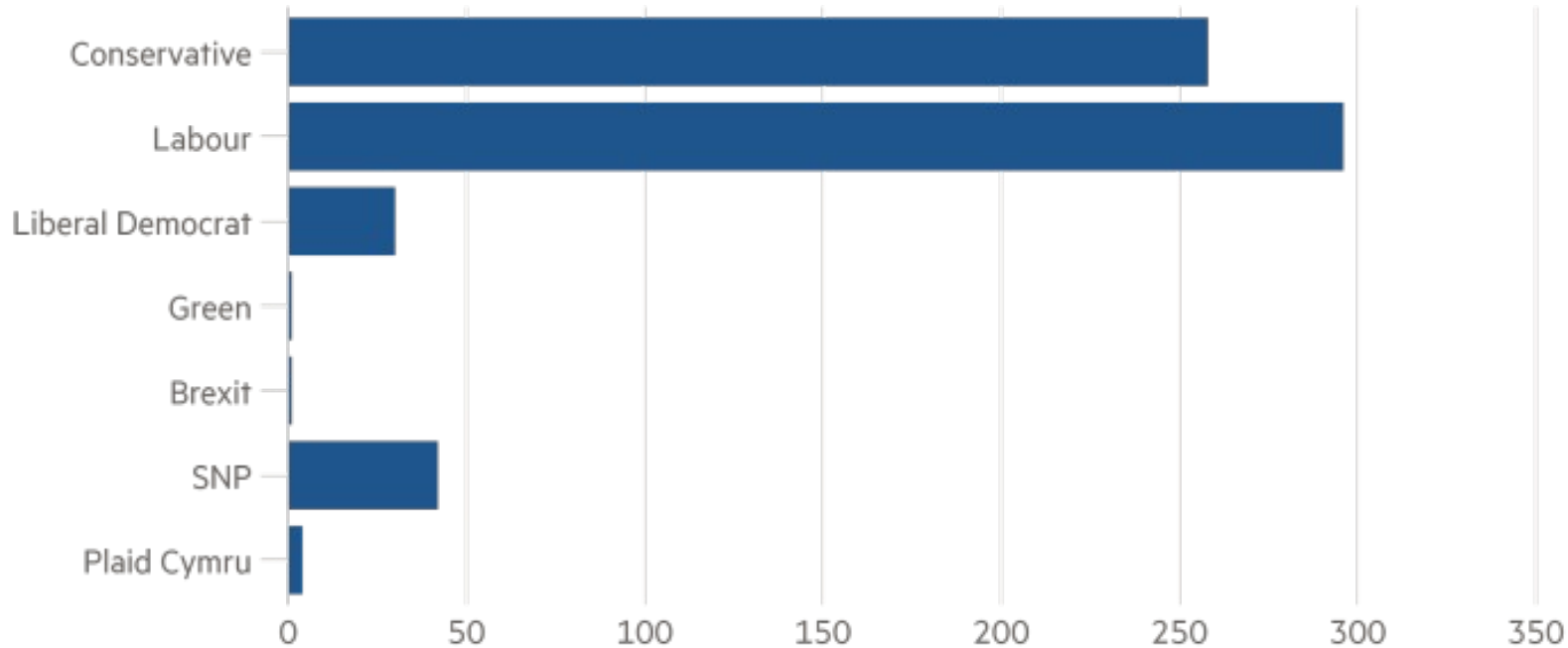
Source: Professor Matthew J. Goodwin

© FT



A Labour/Lib Dem tactical alliance could produce a progressive coalition and a second referendum

Projected number of seats assuming tactical alliance and Brexit party support of 10-15%



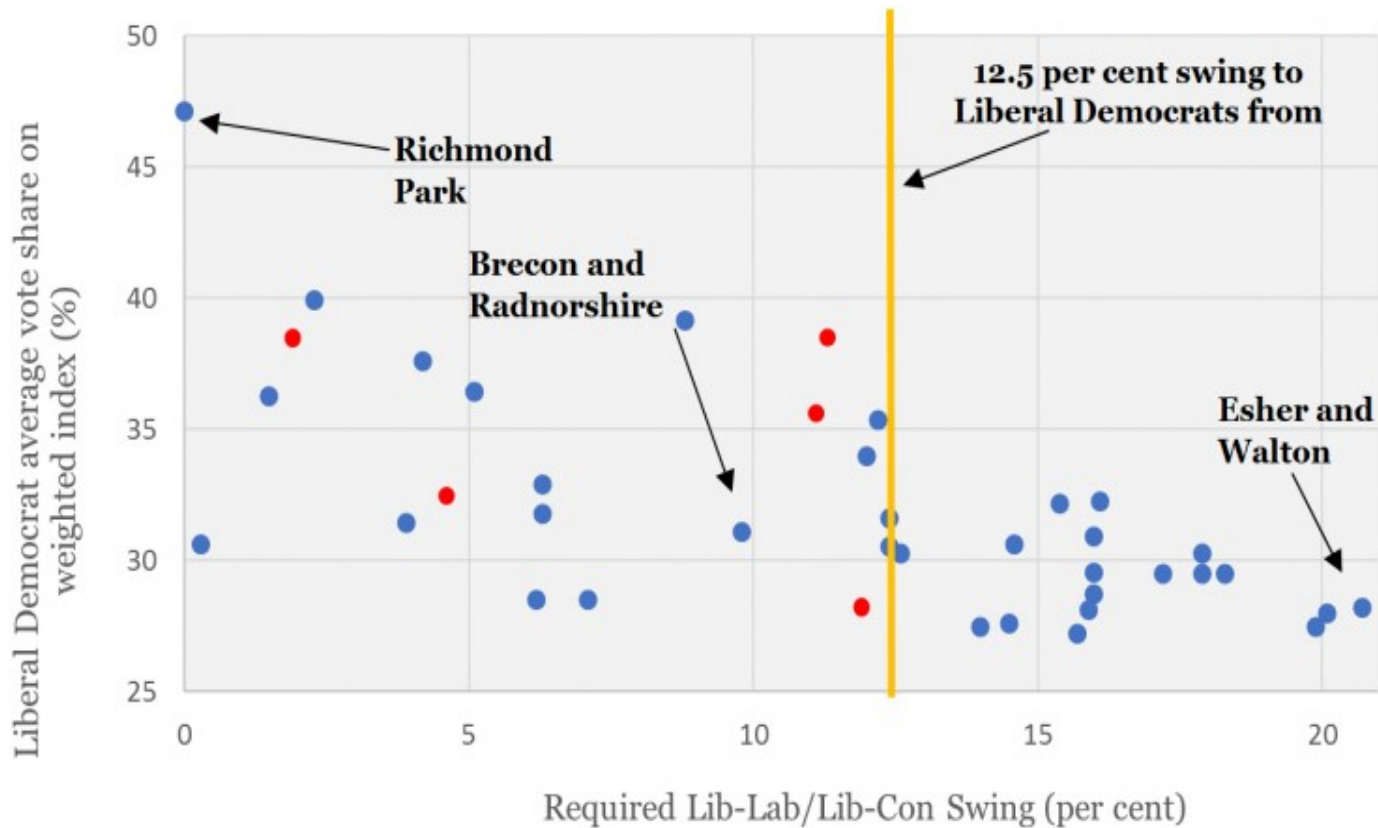
632 Westminster seats excluding Northern Ireland. Projections based on recent polling averages of Conservatives 34%, Labour 23%, Lib Dems 19%, Brexit party 14%, Greens 5%

Source: Professor Matthew J. Goodwin

© FT



Top 40 Liberal Democrat target seats (Conservative/Labour held)

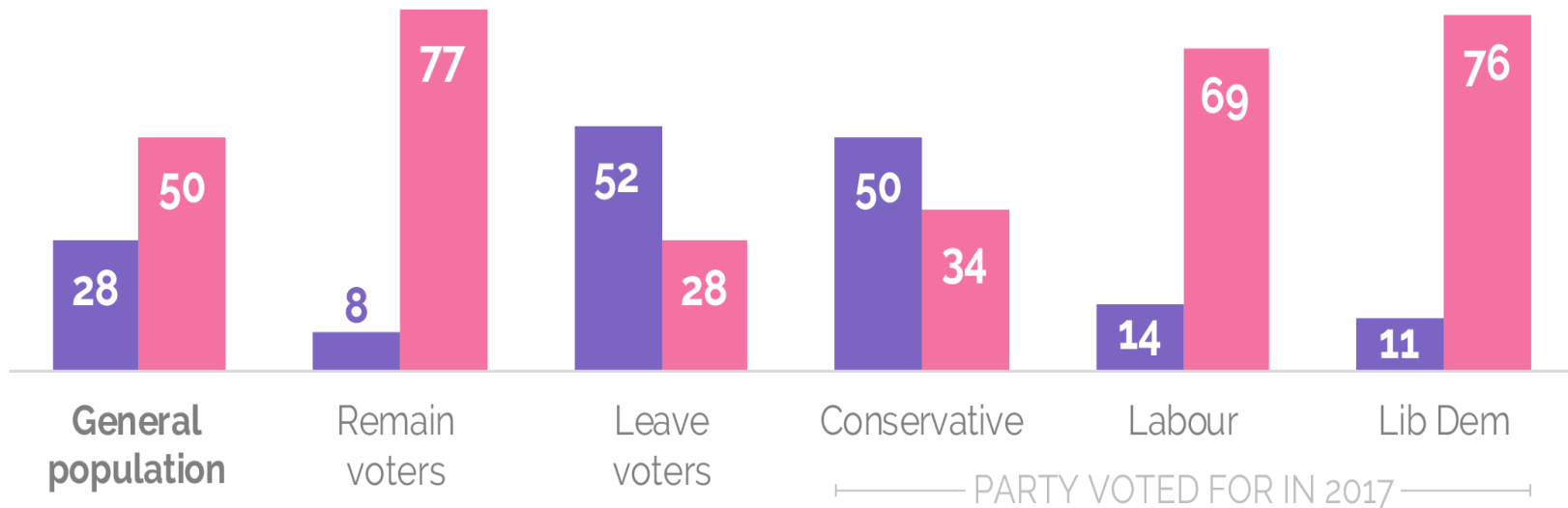




52% of Leave voters want Boris Johnson to break the law for Brexit

Imagine that Parliament voted to legally require Boris Johnson to go to the EU and ask for a Brexit deadline extension. In those circumstances, do you think Boris Johnson should... %

- Break the law by refusing to ask the EU for a Brexit deadline extension
- Not break the law and ask the EU for a Brexit deadline extension





Vote tactically for a People's Vote

A General Election is coming. The stakes could not be higher. It is vital your voice is heard and your vote counts. Our campaign will provide clear and independent advice on how best to use your vote to secure a People's Vote on Brexit. Sign up and be the first to know what our recommendations are:

<https://www.tactical-vote.uk/>

SIGN UP

Send me email updates

The People's Vote campaign is run by Open Britain. Your personal information is processed by Open Britain. For more details about how Open Britain uses your information and your data rights, click here to read our [privacy policy](#).



Tactical voting could cost Johnson's government up to 60 seats at a snap general election and eject Boris Johnson from No 10, new polling has found.

Almost half of Labour supporters and an even higher proportion of Greens say they are ready to switch to the Liberal Democrats if it would help defeat the party committed to Brexit in their constituency. More than a third of Lib Dem backers would make the opposite journey at the ballot box – potentially delivering 60 seats and a mortal blow to Mr Johnson's hopes of winning a majority.

The poll, for the People's Vote campaign, comes after it unveiled plans for the biggest vote-swapping drive in history, to support the best-placed candidate in more than 100 battleground seats. "Tactical voting could damage Johnson's prospects fatally, meaning Labour could make net gains from the Tories," said pollster Peter Kellner, the former YouGov president.

WHAT IFS



Johnson leaves EU without a deal in defiance of Parliament

Vote of no confidence followed by caretaker Government extension to Brexit – new leave deal and referendum

Vote of no confidence followed by caretaker Government extension to Brexit – election

Con leavers switch to Brexit Party

Lib-Dems switch to Lab in marginals

Con remainers switch to Lib Dem in marginals

Lab remainers switch to Lib Dem in marginals