

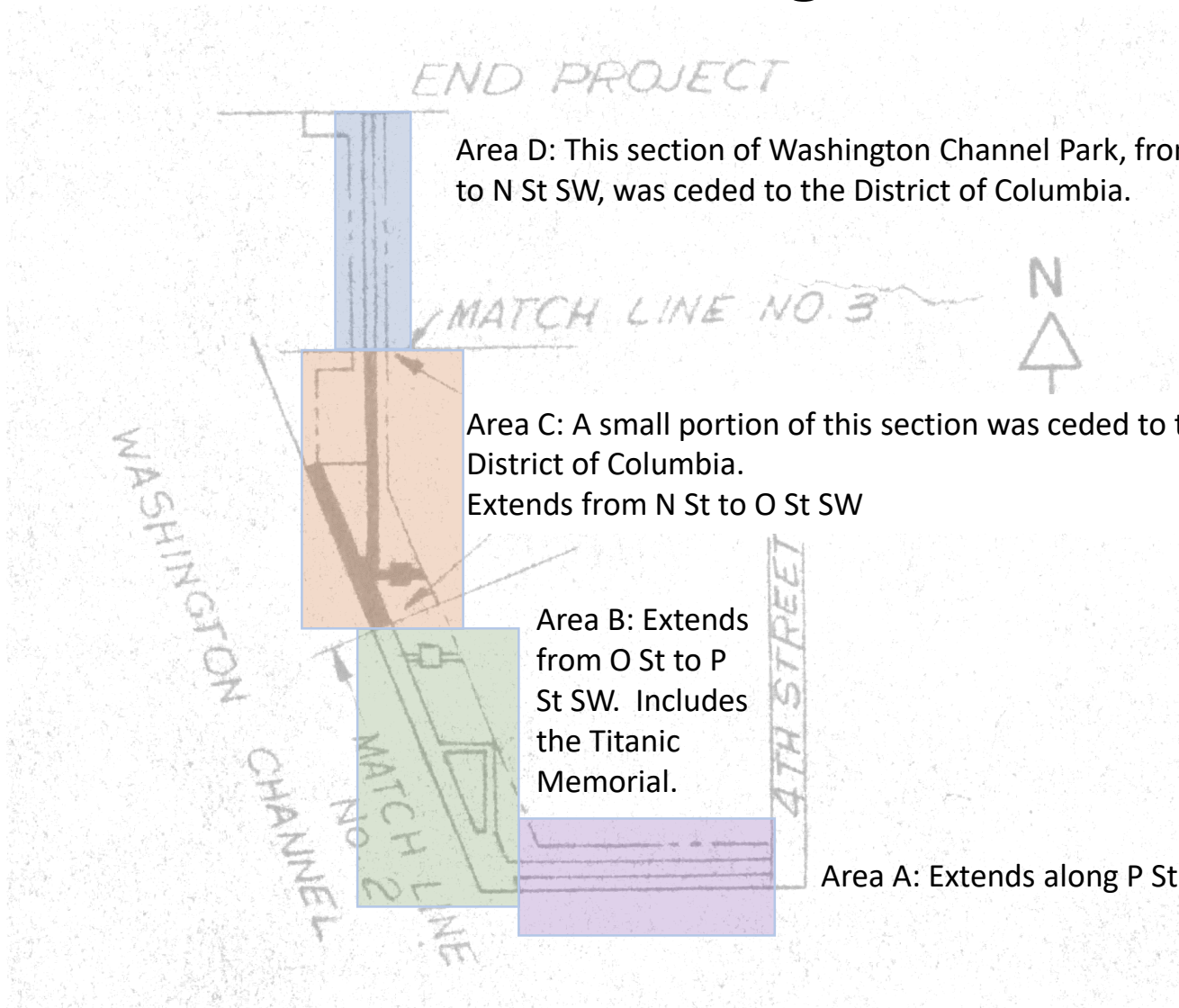
Titanic Memorial Park Tree Assessment

Comparison to Historic drawings

Historic Drawings

- Historic Drawings of Washington Channel Park were obtained from the National Archives in late 2018
- [Electronic versions](#) were edited for readability and posted on a public Google Drive
- Some, but not all, drawings are stamped “AS BUILT”
- Park is divided into 4 areas, A – D. (See next slide)
 - Areas A – C are current Reservation 717, colloquially known as Titanic Memorial Park
 - Area D was ceded to the District of Columbia and has been redeveloped as Waterfront Park. Willow Oaks in the original design were preserved.

Areas A – D, Washington Channel Park



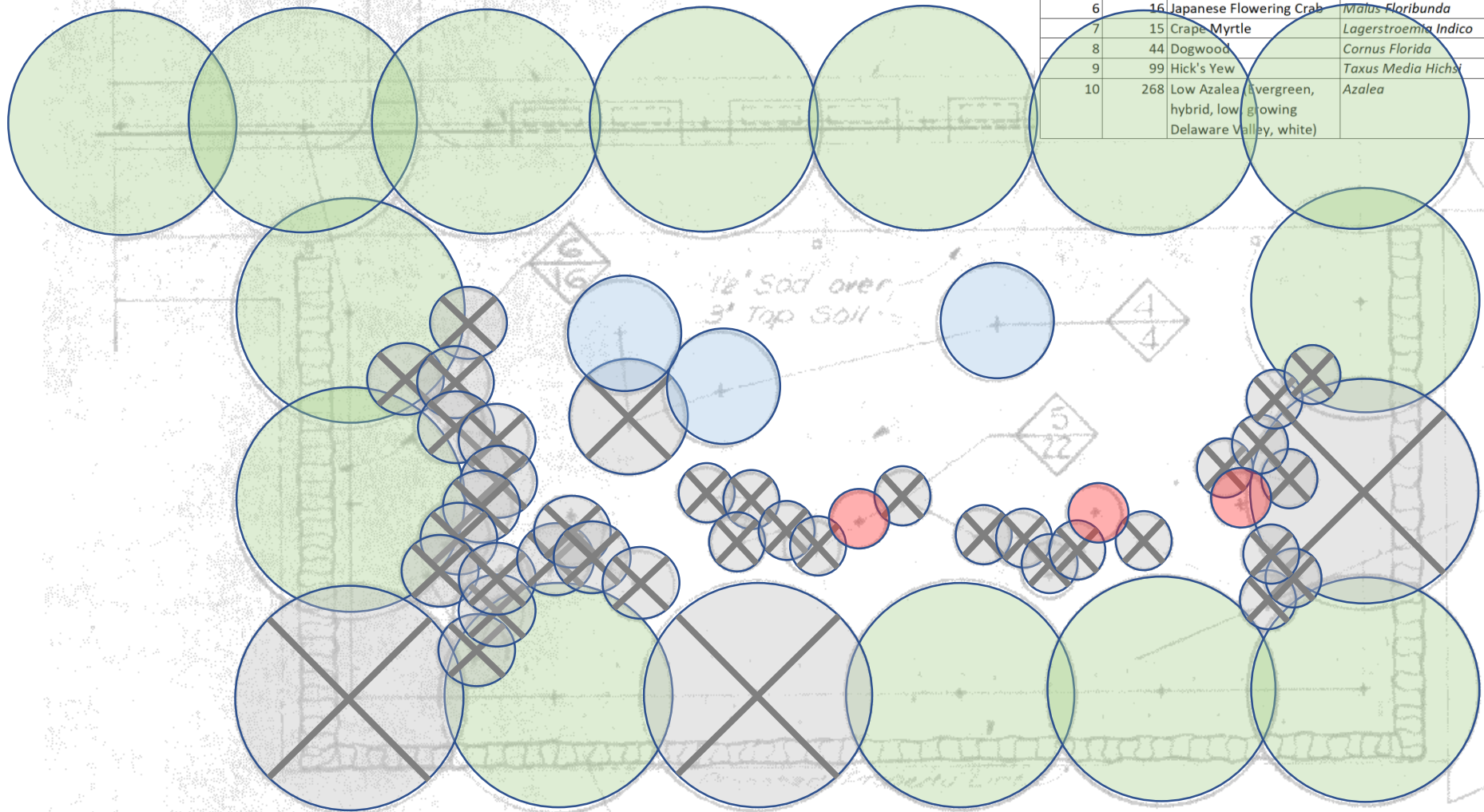
Area D: This section of Washington Channel Park, from 6th St to N St SW, was ceded to the District of Columbia.

Area C: A small portion of this section was ceded to the District of Columbia.
Extends from N St to O St SW

Area B: Extends from O St to P St SW. Includes the Titanic Memorial.

Area A: Extends along P St Alley SW.

Mark	Quantity	Description	
		Common Name	Botanical Name
1	83	Willow Oak	<i>Quercus Phellos</i>
2	2	Sourwood	<i>Oxydendrun Arboreum</i>
3	0	Overcup Oak	<i>Quercus Lyrata</i>
4	4	Star Magnolia	<i>Magnolia Stellata</i>
5	10	Hapa Crab	<i>Malus Hapa</i>
6	16	Japanese Flowering Crab	<i>Malus Floribunda</i>
7	15	Crape Myrtle	<i>Lagerstroemia Indico</i>
8	44	Dogwood	<i>Cornus Florida</i>
9	99	Hick's Yew	<i>Taxus Media Hich</i>
10	268	Low Azalea (Evergreen, hybrid, low growing Delaware Valley, white)	<i>Azalea</i>



Area C

2019

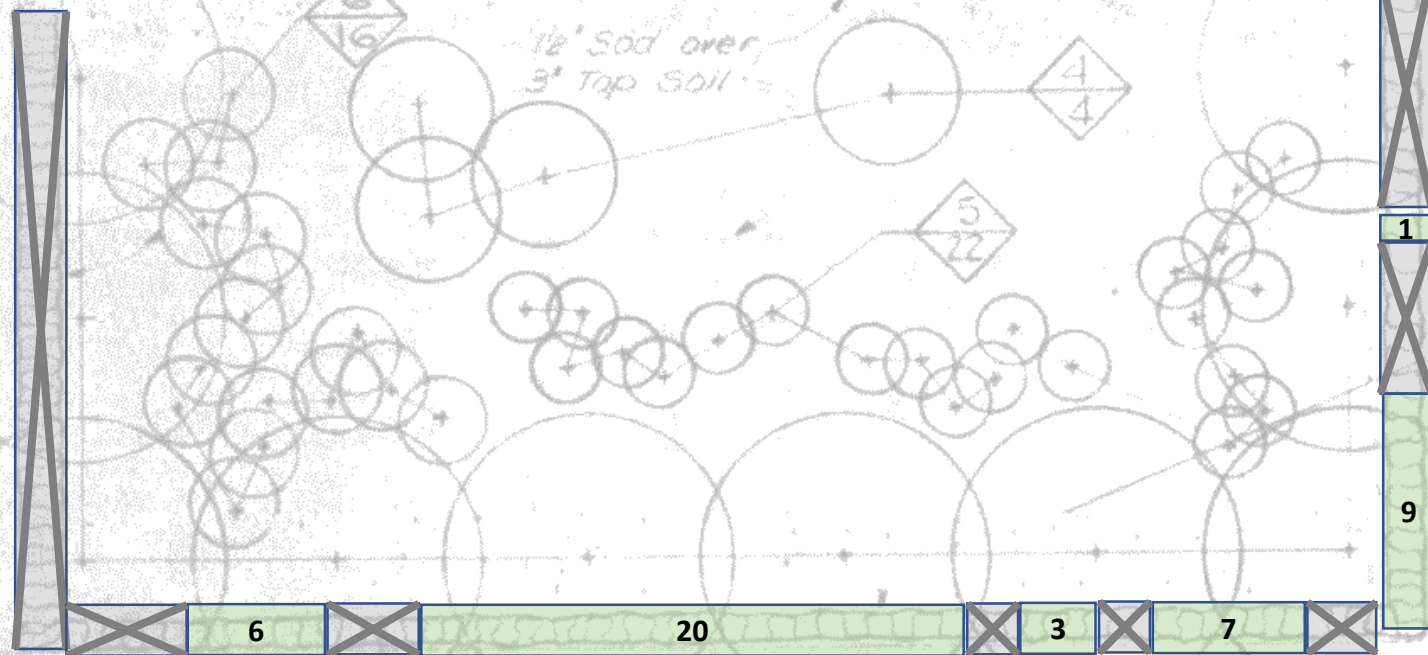
Saucer
Magnolia

Willow
Oak

Prepared by Friends of Titanic Memorial Park

Crabapple

Mark	Quantity	Description	
		Common Name	Botanical Name
1	83	Willow Oak	<i>Quercus Phellos</i>
2	2	Sourwood	<i>Oxydendrun Arboreum</i>
3	0	Overcup Oak	<i>Quercus Lyrata</i>
4	4	Star Magnolia	<i>Magnolia Stellata</i>
5	10	Hapa Crab	<i>Malus Hapa</i>
6	16	Japanese Flowering Crab	<i>Malus Floribunda</i>
7	15	Crape Myrtle	<i>Lagerstroemia Indico</i>
8	44	Dogwood	<i>Cornus Florida</i>
9	99	Hick's Yew	<i>Taxus Media Hichsi</i>
10	268	Low Azalea (Evergreen, hybrid, low, growing Delaware Valley, white)	<i>Azalea</i>



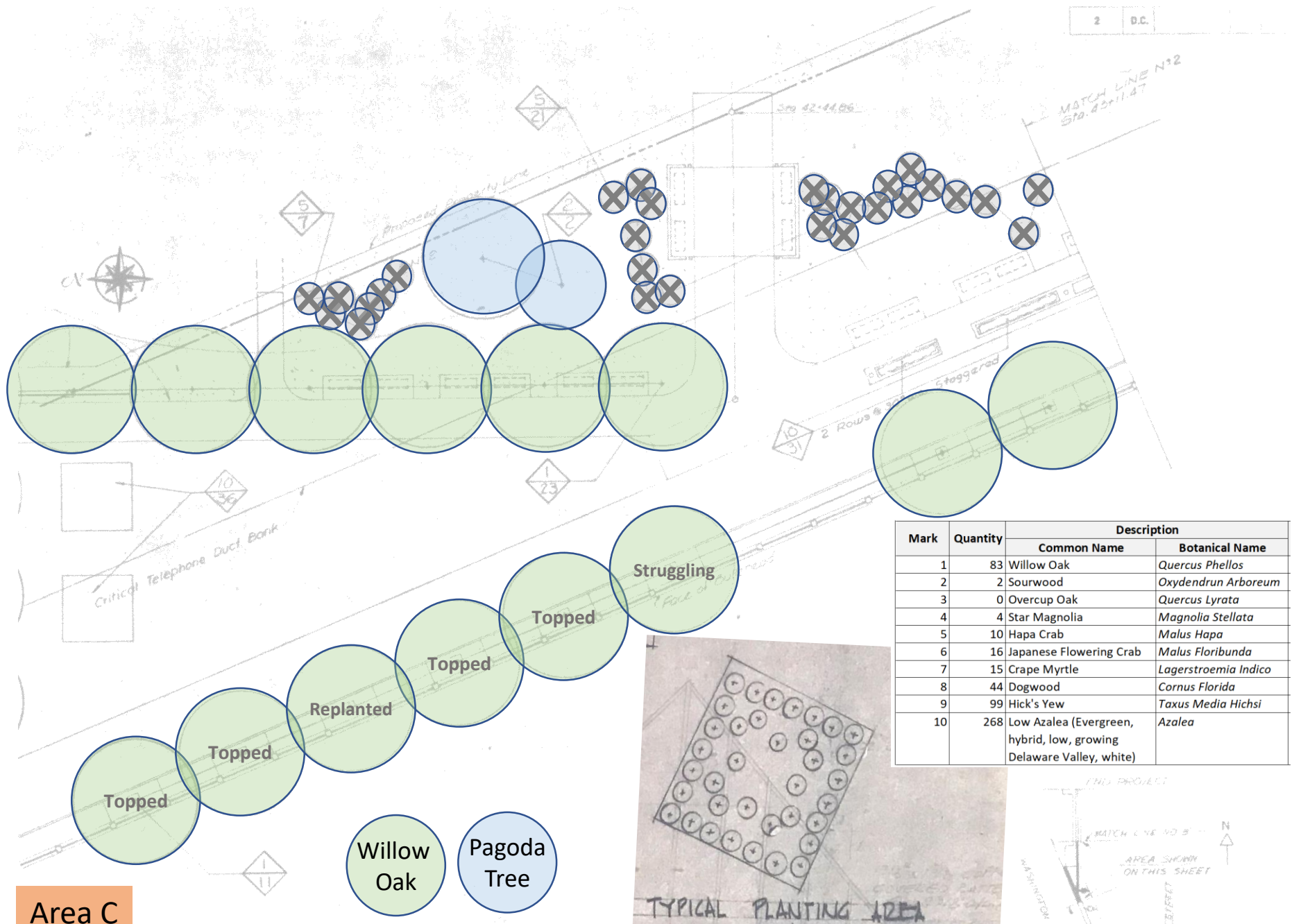
Area C

2019

Yew

Prepared by Friends of Titanic Memorial Park

5



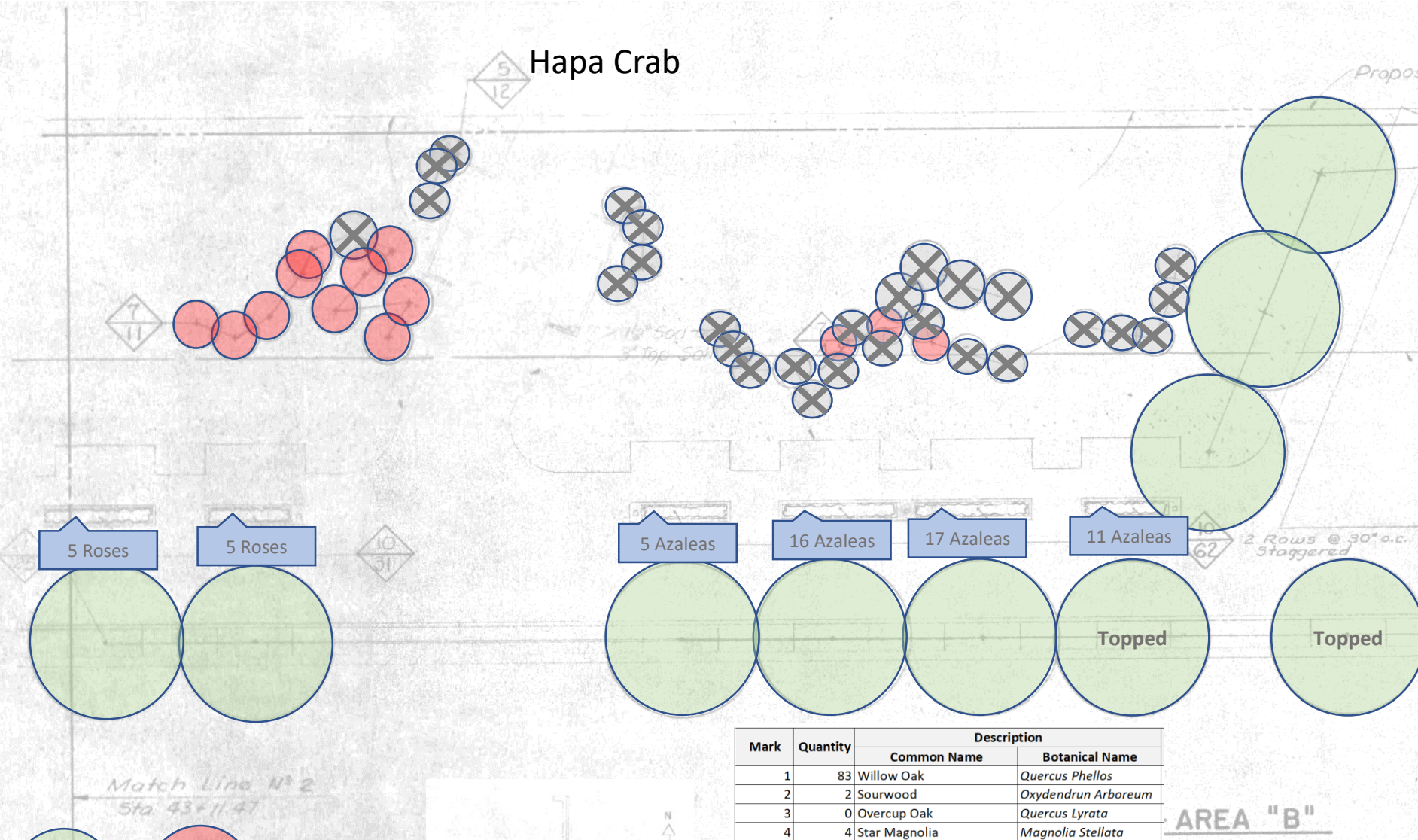
Mark	Quantity	Description	
		Common Name	Botanical Name
1	83	Willow Oak	<i>Quercus Phellos</i>
2	2	Sourwood	<i>Oxydendrun Arboreum</i>
3	0	Overcup Oak	<i>Quercus Lyrata</i>
4	4	Star Magnolia	<i>Magnolia Stellata</i>
5	10	Hapa Crab	<i>Malus Hapa</i>
6	16	Japanese Flowering Crab	<i>Malus Floribunda</i>
7	15	Crape Myrtle	<i>Lagerstroemia Indico</i>
8	44	Dogwood	<i>Cornus Florida</i>
9	99	Hick's Yew	<i>Taxus Media Hichsi</i>
10	268	Low Azalea (Evergreen, hybrid, low, growing Delaware Valley, white)	<i>Azalea</i>

Area C

2019

LANDSCAPE - AREA "C"

Prepared by Friends of Titanic Memorial Park



Willow Oak

Crape Myrtle

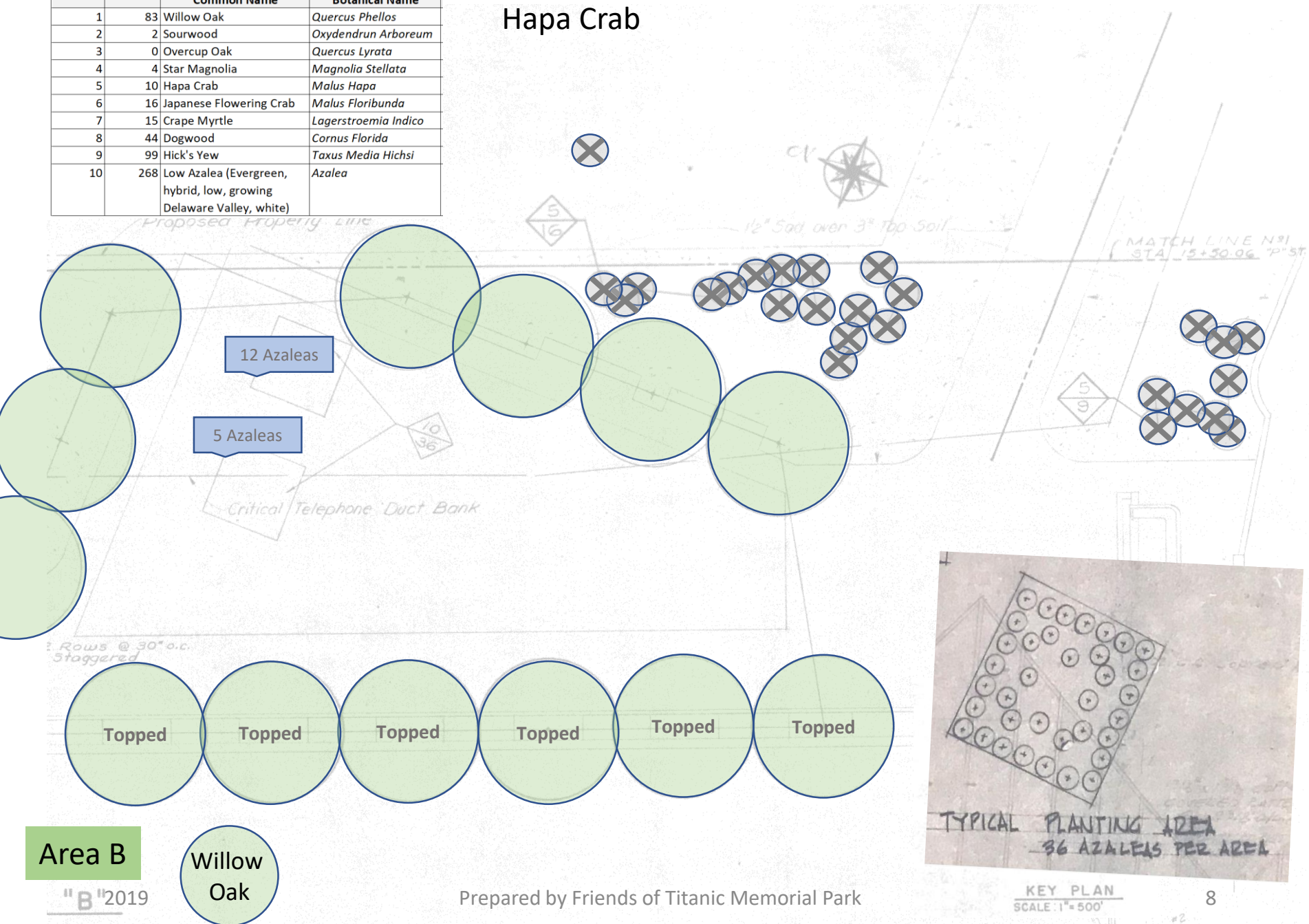
Area B

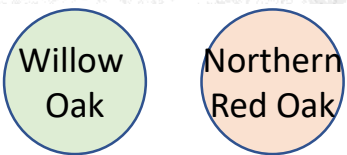
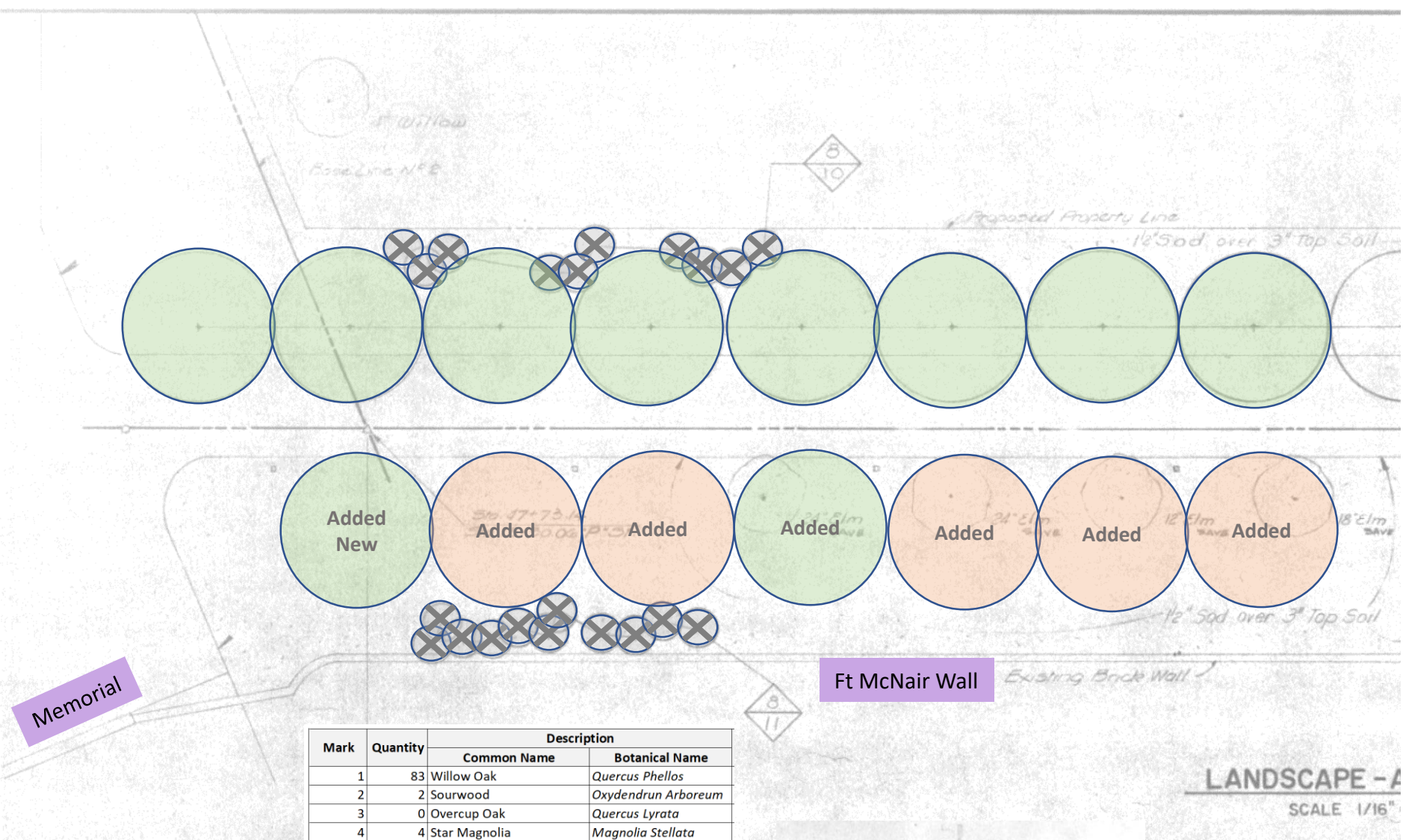
Mark	Quantity	Description	
		Common Name	Botanical Name
1	83	Willow Oak	<i>Quercus Phellos</i>
2	2	Sourwood	<i>Oxydendrun Arboreum</i>
3	0	Overcup Oak	<i>Quercus Lyrata</i>
4	4	Star Magnolia	<i>Magnolia Stellata</i>
5	10	Hapa Crab	<i>Malus Hapa</i>
6	16	Japanese Flowering Crab	<i>Malus Floribunda</i>
7	15	Crape Myrtle	<i>Lagerstroemia Indico</i>
8	44	Dogwood	<i>Cornus Florida</i>
9	99	Hick's Yew	<i>Taxus Media Hichsi</i>
10	268	Low Azalea (Evergreen, hybrid, low, growing Delaware Valley, white)	<i>Azalea</i>

AREA "B"

Mark	Quantity	Description	
		Common Name	Botanical Name
1	83	Willow Oak	<i>Quercus Phellos</i>
2	2	Sourwood	<i>Oxydendrum Arboreum</i>
3	0	Overcup Oak	<i>Quercus Lyrata</i>
4	4	Star Magnolia	<i>Magnolia Stellata</i>
5	10	Hapa Crab	<i>Malus Hapa</i>
6	16	Japanese Flowering Crab	<i>Malus Floribunda</i>
7	15	Crape Myrtle	<i>Lagerstroemia Indica</i>
8	44	Dogwood	<i>Cornus Florida</i>
9	99	Hick's Yew	<i>Taxus Media Hicshi</i>
10	268	Low Azalea (Evergreen, hybrid, low, growing Delaware Valley, white)	<i>Azalea</i>

Hapa Crab

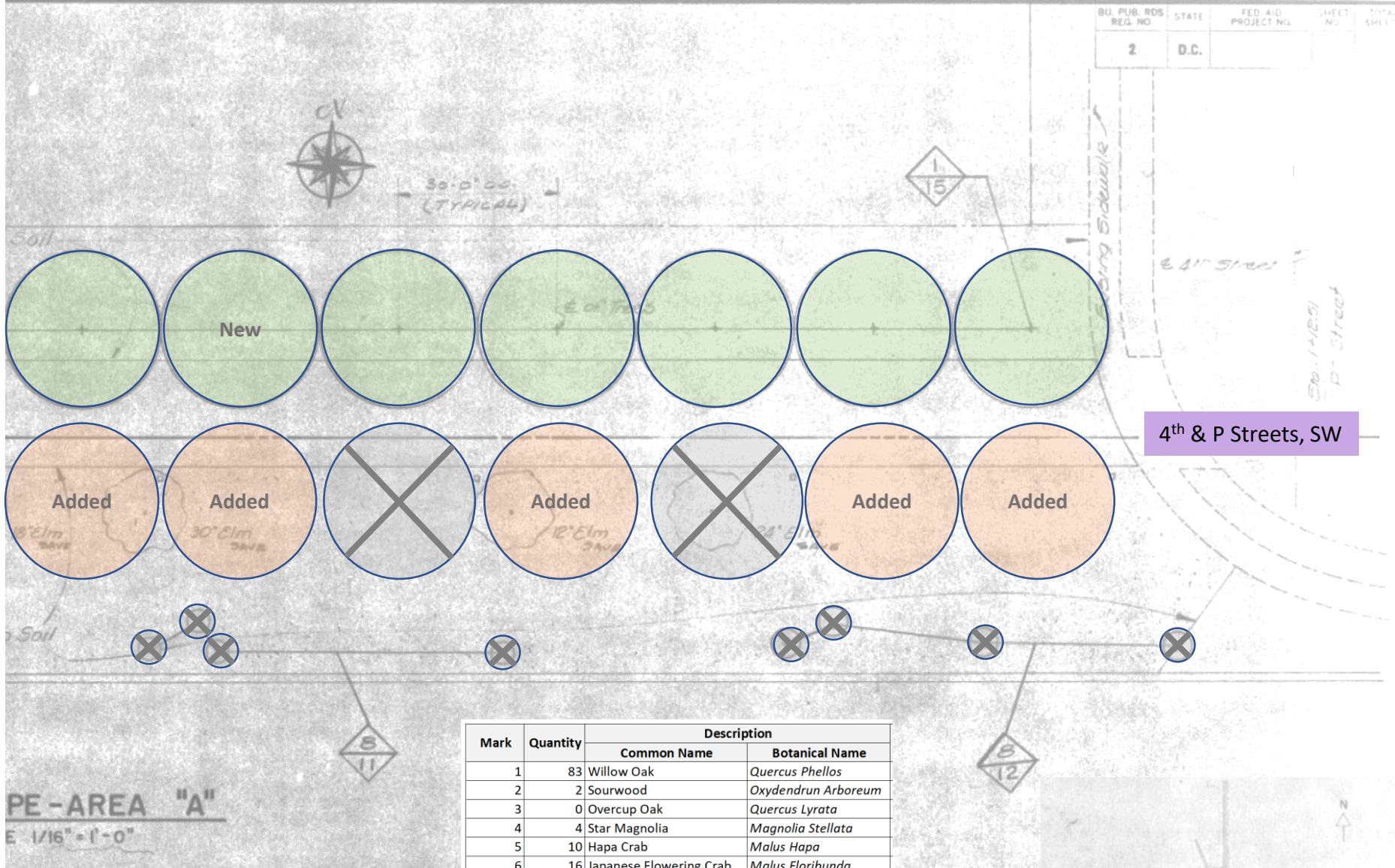




Area A

2019

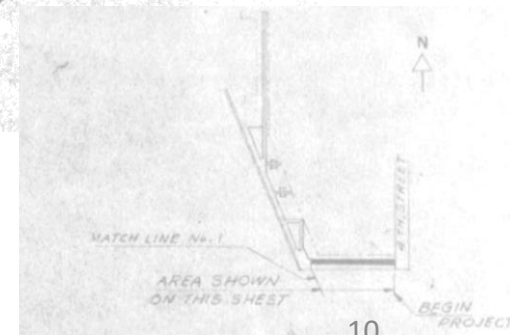
Prepared by Friends of Titanic Memorial Park



Area A

Willow
Oak

Broad-leaf
Oak



PLANT LIST

MARK	QUANTITY	DESCRIPTION		SIZE	MEASUREMENTS & REMARKS
		COMMON NAME	BOTANICAL NAME		
1	83	Willow Oak	<i>Quercus Phellos</i>	6" Caliber	B & B
2	2	Sourwood	<i>Oxydendrum Arboreum</i>	6" Caliber	B & B
3	0	Overcup Oak	<i>Quercus Lyrata</i>	6" Caliber	B & B
4	4	Star Magnolia	<i>Magnolia Stellata</i>	8'-10' Height	B & B MEASUREMENT ABOVE BALL TO TOP OF MAIN BODY OF TREE.
5	10	Hopa Crab	<i>Malus Hopa</i>	8'-10' Height	B & B
6	16	Japanese Flowering Crab	<i>Malus Floribunda</i>	8'-10' Height	B & B
7	15	Crape Myrtle	<i>Lagerstroemia Indica</i>	8'-10' Height	B & B
8	44	Dogwood	<i>Cornus Florida</i>	8'-10' Height	B & B
9	99	Hick's Yew	<i>Taxus Media Hicshi</i>	4' Height	B & B
10	268	Low Azalea (Evergreen, Hybrid, low growing DELAWARE VALLEY, WHITE)	<i>Azalea</i>	2.5'-3' Height	B & B MEASUREMENT ABOVE BALL TO TOP OF MAIN BODY OF PLANT.

Plant List

Mark	Quantity	Description		Size	Measurements & Remarks
		Common Name	Botanical Name		
1	83	Willow Oak	<i>Quercus Phellos</i>	6" Caliper	B & B
2	2	Sourwood	<i>Oxydendrun Arboreum</i>	6" Caliper	B & B
3	0	Overcup Oak	<i>Quercus Lyrata</i>	6" Caliper	B & B
4	4	Star Magnolia	<i>Magnolia Stellata</i>	8'-10' Height	B & B Measurement above Ball to top of main body of tree
5	10	Hopa Crab	<i>Malus Hopa</i>	8'-10' Height	B & B
6	16	Japanese Flowering Crab	<i>Malus Floribunda</i>	8'-10' Height	B & B
7	15	Crape Myrtle	<i>Lagerstroemia Indico</i>	8'-10' Height	B & B
8	44	Dogwood	<i>Cornus Florida</i>	8'-10' Height	B & B
9	99	Hick's Yew	<i>Taxus Media Hicshi</i>	4' Height	B & B
10	268	Low Azalea (Evergreen, hybrid, low, growing Delaware Valley, white)	<i>Azalea</i>	2.5'-3' Height	B & B Measurement above Ball to top of main body of plant