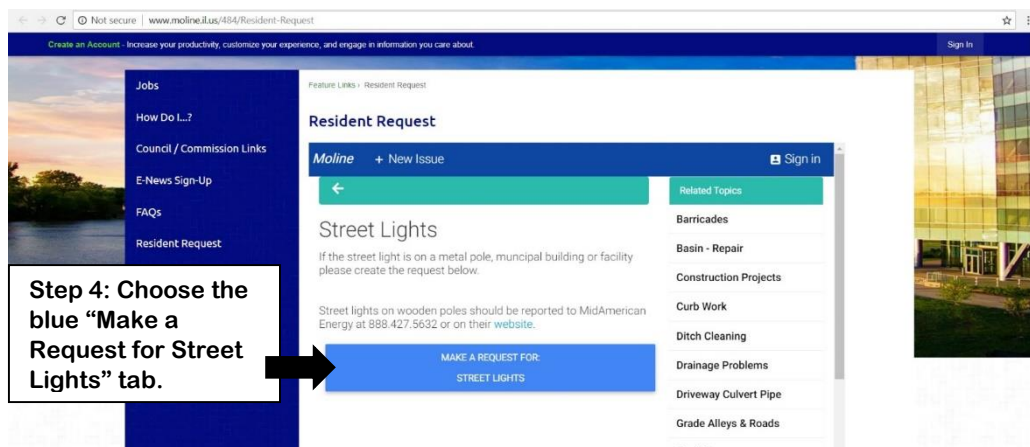
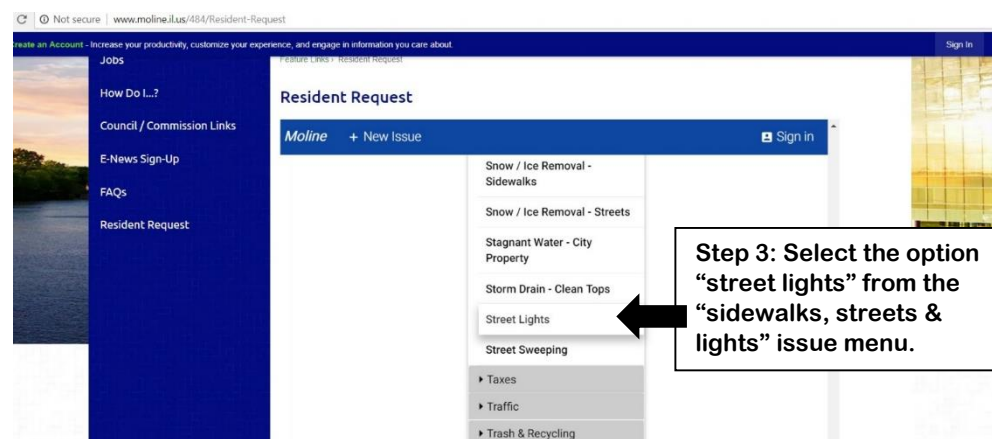


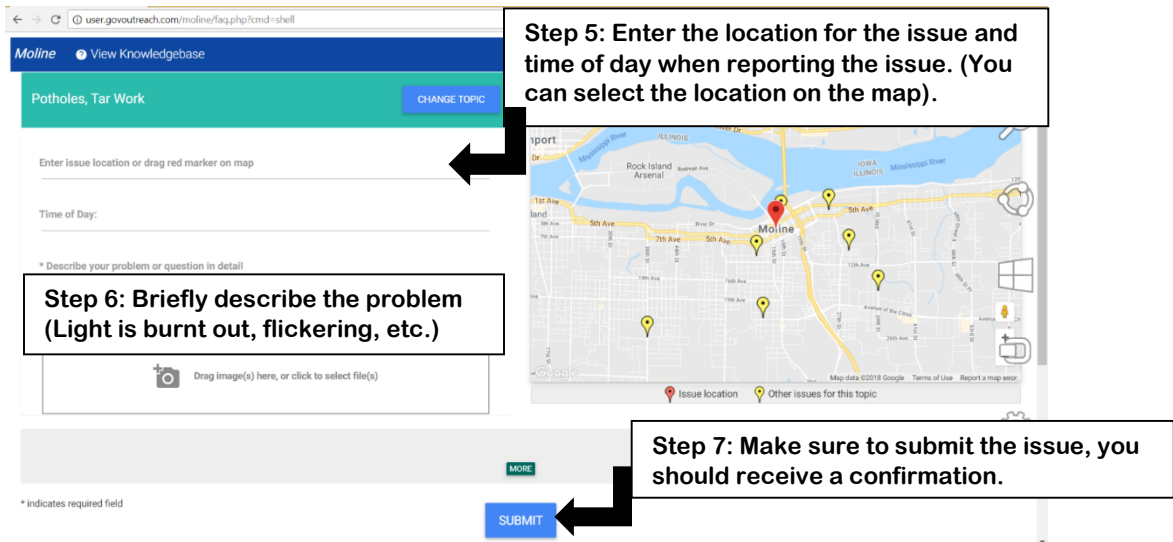
The City of Moline maintains and repairs street lights **on metal poles**, municipal buildings and facilities. **To report a streetlight on a metal pole** you must submit an online service request online or through the go request app on your phone.

Any **street light outages on wooden poles** should be reported to the **MidAmerican Energy Company** at 888.427.5632 or using their online street light outage request shown on page 2 of this guide at: <https://www.midamericanenergy.com/streetlight-outage-request.aspx>

Metal Pole Streetlight Repair:



Remember, the City of Moline **only responds to street lights on metal poles, municipal buildings or City facilities.** Any **street light outages on wooden poles** should be reported to the MidAmerican Energy Company at 888.427.5632 or using their online street light outage request: <https://www.midamericanenergy.com/streetlight-outage-request.aspx>



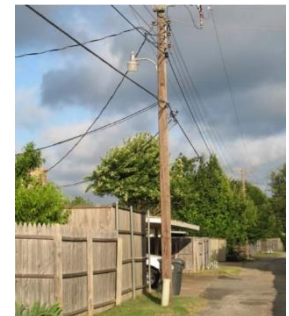
Step 5: Enter the location for the issue and time of day when reporting the issue. (You can select the location on the map).

Step 6: Briefly describe the problem (Light is burnt out, flickering, etc.)

Step 7: Make sure to submit the issue, you should receive a confirmation.

Wooden Pole Streetlight Repair:

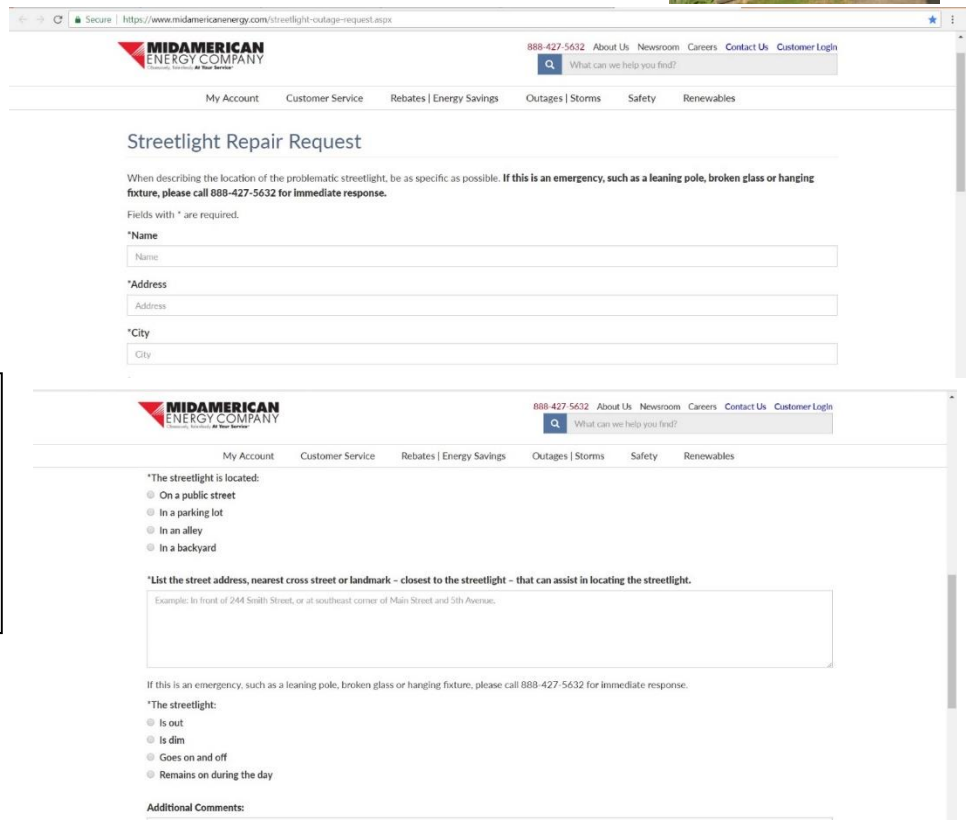
In Moline, street light outages on wooden poles, **like the one shown in the image**, should be reported to the MidAmerican Energy Company at 888.427.5632 or by using their online street light outage request: <https://www.midamericanenergy.com/streetlight-outage-request.aspx>



Remember, when describing the location of a problematic streetlight, **it is important to be as specific as possible.**

Step 1: Make sure to fill out the required fields and add your up to date contact information in case the company has any questions.

Step 2: Make sure to provide detailed and accurate information about the location and address of the streetlight you are reporting, then press submit (you should receive an email confirmation)



MIDAMERICAN ENERGY COMPANY
888-427-5632 About Us Newsroom Careers Contact Us Customer Login

What can we help you find?

My Account Customer Service Rebates | Energy Savings Outages | Storms Safety Renewables

Streetlight Repair Request

When describing the location of the problematic streetlight, be as specific as possible. **If this is an emergency, such as a leaning pole, broken glass or hanging fixture, please call 888-427-5632 for immediate response.**

Fields with * are required.

*Name
Name

*Address
Address

*City
City

*The streetlight is located:
 On a public street
 In a parking lot
 In an alley
 In a backyard

*List the street address, nearest cross street or landmark - closest to the streetlight - that can assist in locating the streetlight.
 Example: In front of 244 South Street, or at southeast corner of Main Street and 5th Avenue.

If this is an emergency, such as a leaning pole, broken glass or hanging fixture, please call 888-427-5632 for immediate response.

*The streetlight:
 Is out
 Is dim
 Goes on and off
 Remains on during the day

Additional Comments: