

2019

# Hawaii Children's Policy Agenda

Convened by Hawaii Children's Action Network





## 2019 Hawaii Children's Policy Agenda

Hawaii Children's Action Network (HCAN) is building a unified voice for Hawaii's children by using strategic communications, public education and advocacy to effect change. Collaboration on the Hawaii Children's Policy Agenda serves as a starting point to ignite awareness of, bring together support for, and amplify the advocacy for pro-child policies.

This Agenda reflects the input of HCAN Community Champions Members who are committed to improving the lives of Hawaii's children by promoting public policy changes that benefit their health, safety, education and economic security. Hawaii Children's Action Network respects the diversity, expertise, perspectives and priorities within this community of advocates and is honored to advance the work of our peers in children's advocacy. HCAN supports all of the items within the Children's Policy Agenda.

The Agenda contains bills and resolutions that will be introduced in the 2019 Hawaii State Legislative Session and represent the top priority issues of our community champion members. Under each initiative listed, there is a lead organization that serves as the primary point of contact for advocacy.

The Agenda is organized into the following categories affecting kids and families:

- Economic Security and Equity for Children
- Family Strengthening
- Health and Wellness
- Child Safety and Welfare
- Education

## ECONOMIC SECURITY AND EQUITY

All children live in families that can provide for their needs and invest in their future

**40%**   
of Hawaii's children live in households with a high housing cost burden

Hawaii's children rank **30th**   
nationally in economic well-being

**Initiative:** Bill establishing a family leave insurance program in Hawaii to provide 16 weeks of partial wage replacement, based on a sliding scale.

**Lead:** Working Families Coalition

**Initiative:** Bill to expand the existing Hawaii Dependent Care Tax Credit by raising the amount of the tax credit and increasing the income limits used to calculate a family's benefit amount so that low-income families can receive a more meaningful benefit.

**Lead:** Hawaii Early Childhood Advocacy Alliance

**Initiative:** Bill to raise the minimum wage to a livable wage, eliminate the tip credit, and automatically adjust for cost of living.

**Lead:** Raise Up Hawaii

**Initiative:** Bill to allow SNAP recipients to get double credit when using their SNAP benefits to purchase Hawaii-grown fresh produce.

**Lead:** Hawaii Public Health Institute, Hawaii Appleseed Center for Law & Economic Justice

**Initiative:** Bill to eliminate the Real Estate Investment Trust (REIT) tax loophole to increase revenue for affordable housing, schools, roads, or other community needs.

**Lead:** ALICE Policy Hui

## STRENGTHENING HAWAII'S FAMILIES

Children and families deserve support so they can thrive

**Preserving the relationship**   
between a child and their incarcerated parent alleviates children's mental health issues and anxiety, facilitates a smoother reentry for the parent upon release, and reduces recidivism rates

**Initiative:** Resolution to form a working group on establishing visitation centers at correctional facilities to improve visitation by children of incarcerated persons.

**Lead:** Blueprint for Change

**Initiative:** \$257,000 request for Zero to Three Court staff and program support.

**Lead:** Early Childhood Action Strategy

**Initiative:** Two staff positions for the Hawaii State Commission on Fatherhood.

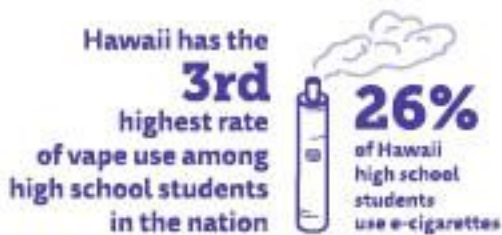
**Lead:** Early Childhood Action Strategy





## HEALTH AND WELLNESS

All children are born healthy, grow healthy and have access to affordable, comprehensive, and high-quality care



**Initiative:** Bill banning the sale of flavored tobacco products in the state of Hawaii.

**Lead:** Hawaii Public Health Institute

**Initiative:** Bill requiring licensure for school psychologists.

**Lead:** Hawaii Association of School Psychologists

**Initiative:** Bill requiring restaurants to replace sugary drinks with water or milk in kids' meals as the default option.

**Lead:** Hawaii Public Health Institute

**Initiative:** Bill establishing a licensing and regulatory process for midwifery.

**Lead:** Midwives Alliance of Hawaii

**Initiative:** Request funding for the telehealth portal within the Hawaii State Department of Health.

**Lead:** Early Childhood Action Strategy

**Initiative:** Bill identifying Fetal Alcohol Spectrum Disorders (FASD) as eligible for Developmental Disabilities services.

**Lead:** Hawaii FASD Action Group

## CHILD SAFETY AND WELFARE

All children are safe in their homes and communities from all forms of abuse, neglect, exploitation and violence

It is estimated that **1 in 10** children will become the victims of child sexual abuse by the time they reach age eighteen

**35** states have passed **Erin's Law** to require public schools to implement a child sexual abuse prevention educational curriculum

**Initiative:** Bill clarifying that health insurance providers must cover clinical victim support services as a benefit of their plans.

**Lead:** The Sex Abuse Treatment Center

**Initiative:** Bill eliminating status offenses for youth (e.g., truancy, runaway, beyond parental control).

**Lead:** Hawaii Youth Services Network



**Initiative:** Bill establishing a multidisciplinary working group to establish a program for the consistent delivery of sexual violence prevention (Erin's Law) to students in grades pre-K through 12.

**Lead:** The Sex Abuse Treatment Center

**Initiative:** Bill establishing a housing homeless youth pilot project; funding for street outreach; funding for drop-in centers for homeless youth on neighbor islands; safe place for youth pilot program.

**Lead:** Hawaii Youth Services Network

## EDUCATION

All children have access to high quality child care, early learning and education to reach their academic potential



**Initiative:** \$18 million to fund twenty-two new public pre-K classrooms, additional staff, and associated operational costs, with the capacity to increase service to over 800 children.

**Lead:** Hawaii Early Childhood Advocacy Alliance

**Initiative:** Bill to expand afterschool REACH program.

**Lead:** Hawaii Afterschool Alliance

**Initiative:** Bills to establish a new dedicated, sustainable funding source to adequately support our public schools above the current funding level.

**Lead:** Hawaii State Teachers Association

**Initiative:** Bill to appropriate funds for charter school facilities.

**Lead:** Hawaii Public Charter Schools Network



**Initiative:** \$4 million dollars to sustain the 18 charter school pre-K classrooms across the state serving approximately 360 children, including 7 Native Hawaiian immersion and culture-based pre-K charter schools.

**Lead:** ALICE Policy Hui, Hawaii Public Charter Schools Network, Hawaii Early Childhood Advocacy Alliance

**Initiative:** Bill to appropriate funds for transportation and food services for charter schools.

**Lead:** Hawaii Public Charter Schools Network

**Initiative:** Bill adjusting the sliding scale for family copays and child care provider reimbursement rates under the Preschool Open Doors and Child Care Connections child care subsidy programs.

**Lead:** Early Childhood Action Strategy, Hawaii Early Childhood Advocacy Alliance



Hawaii  
Children's Action Network

Hawaii Children's Action Network is a movement fighting for children and their families. We advocate for laws and policies that keep our children safe, healthy and ready to learn so they can thrive.

Our mission is to build a unified voice educating and advocating for Hawaii's children. We are honored to be the convener and coordinator of the pro-child organizations, coalitions and individuals who participated in this Agenda.

## Contact Information

Hawaii Children's Action Network  
850 Richards Street, Suite 201  
Honolulu, HI 96813

[info@hawaii-can.org](mailto:info@hawaii-can.org) | [www.hawaii-can.org](http://www.hawaii-can.org)



## Hawaii Children's Action Network Community Champion Members

### Organizations

ALICE Policy Hui  
AlohaCare  
American Academy of Pediatrics, Hawaii Chapter  
Blueprint for Change  
Early Childhood Action Strategy  
Easter Seals Hawaii  
EPIC 'Ohana, Inc.  
Family Hui Hawaii  
Family Programs Hawaii  
Family Support Hawaii  
Fetal Alcohol Spectrum Disorders (FASD) Action Group  
Hawaii Afterschool Alliance  
Hawaii Alliance for Progressive Action  
Hawaii Appleseed Center for Law & Economic Justice  
Hawaii Association of School Psychologists  
Hawaii Early Childhood Advocacy Alliance  
Hawai'i Keiki: Healthy & Ready to Learn  
Hawaii Maternal & Infant Health Collaborative  
Hawai'i Parents for Public Schools  
Hawai'i Pacific Health  
Hawaii Public Charter Schools Network  
Hawai'i Public Health Institute  
Hawaii State Teachers Association  
Hawaii Youth Services Network  
Hawai'i Women in Filmmaking  
Imua Family Services  
Kamehameha Schools  
Midwives Alliance of Hawaii  
Parents And Children Together (PACT)  
PATCH Hawaii  
PHOCUSED  
Planned Parenthood Votes Northwest and Hawaii  
Project Vision Hawaii  
Raise Up Hawai'i  
The Learning Coalition/He'e Coalition  
The Sex Abuse Treatment Center  
University of Hawaii - Center on the Family  
Waianae Coast Early Childhood Services

### Individuals

Stephanie Batzer	Quin Ogawa
Katie Bennett	David Okumura
Liz Chun	Robert Peters
JoAnn Farnsworth	Jeannine Souki
Elizabeth McFarlane	Erica Yamauchi