

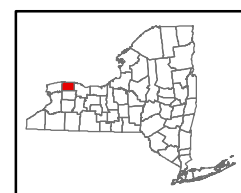
## Heritage Wind Energy Facility

Town of Barre, Orleans County, New York

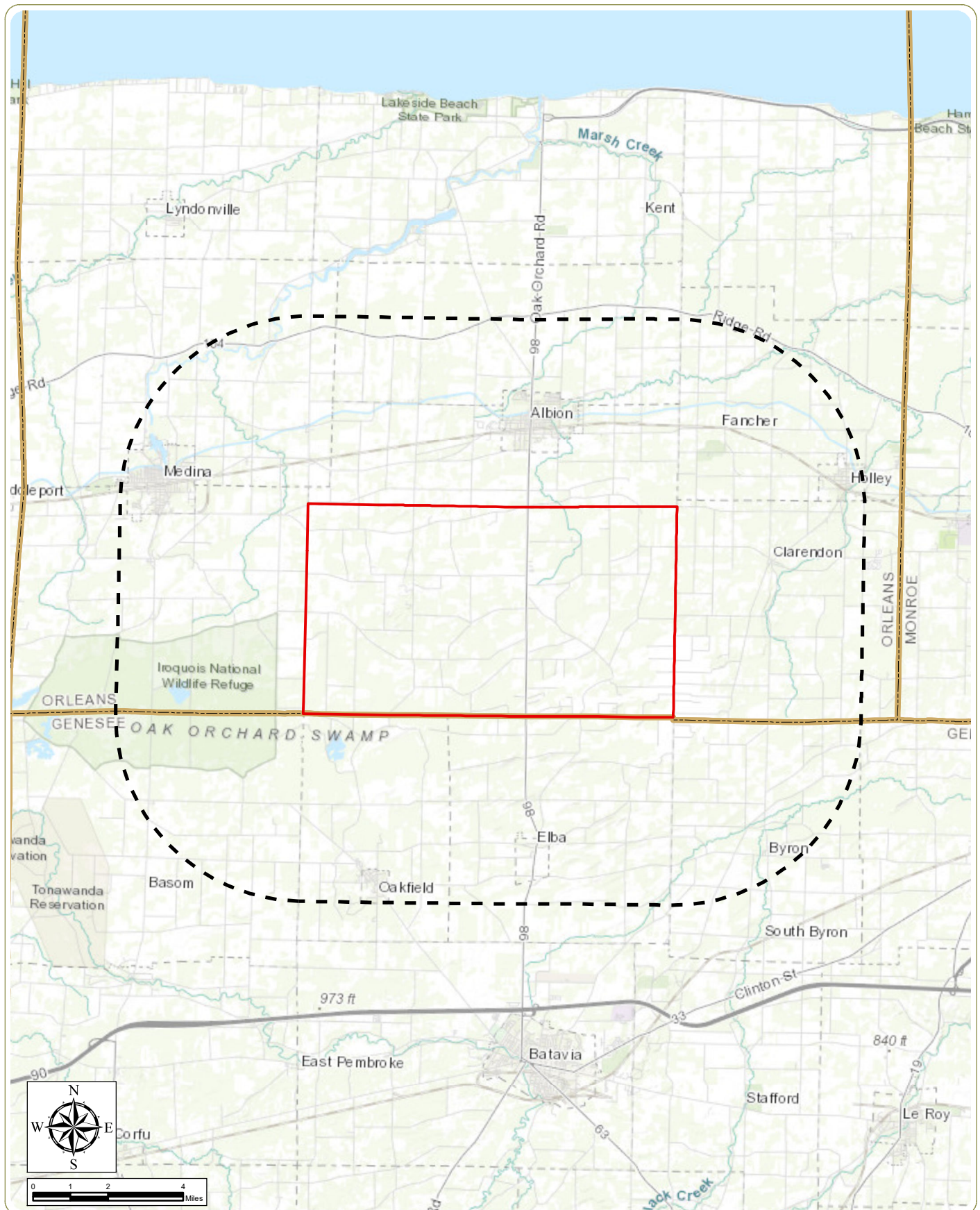
### Preliminary Scoping Statement

**Figure 1: Regional Facility Location**

Facility Area



**Notes:** 1. Basemap: ESRI ArcGIS Online "World Shaded Relief" map service and ESRI StreetMap North America, 2008. 2. This map was generated in ArcMap on March 15, 2018. 3. This is a color graphic. Reproduction in grayscale may misrepresent the data.





## Heritage Wind Energy Facility

Town of Barre, Orleans County, New York

### Preliminary Scoping Statement

**Figure 2: Facility Area and 5-Mile Study Area**

**Notes:** 1. Basemap: ESRI ArcGIS "USGS Topo" Map Service. 2. This map was generated in ArcMap on March 15, 2018. 3. This is a color graphic. Reproduction in grayscale may misrepresent the data.



 Facility Area  
 5-Mile Radius Study Area





Town of Barre, Orleans  
County, New York

### Figure 3: Preliminary Facility Layout

-  Proposed Wind Turbine Location  
 Facility Area

**Notes:** 1. Basemap:USDA NAIP "2017 New York 0.5m" orthoimagery map service. 2. This map was generated in ArcMap on March 15, 2018. 3. This is a color graphic. Reproduction in grayscale may misrepresent the data. 4. This Figure depicts a preliminary layout, which is subject to change.





# Heritage Wind Energy Facility

Town of Barre, Orleans County, New York

Preliminary Scoping Statement

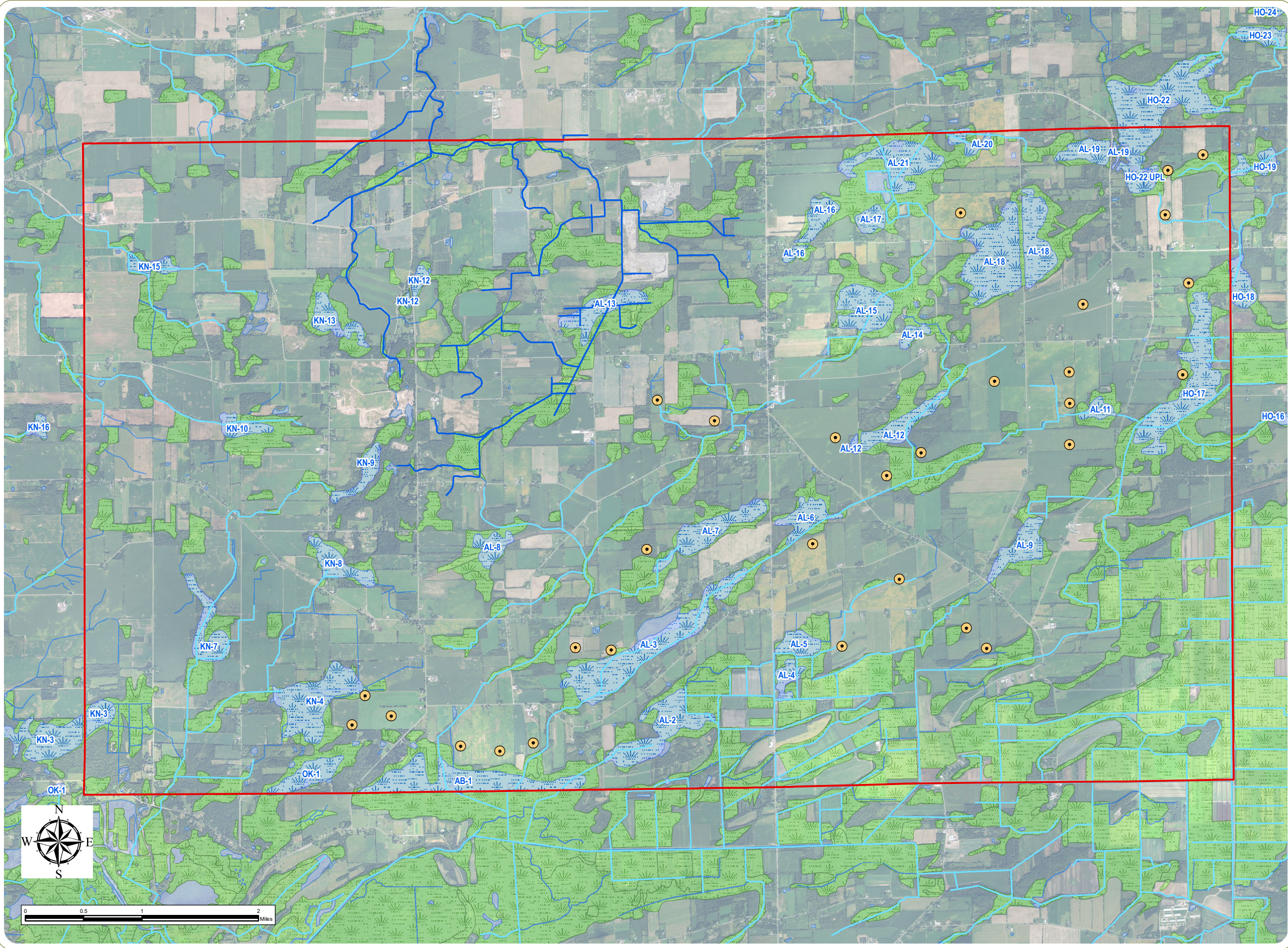
Figure 4: Mapped Wetlands and Streams

- Proposed Wind Turbine Location
- NYS Protected Stream
- Unprotected Stream
- NYSDEC Mapped Wetland
- NWI Mapped Wetland
- NWI Mapped Lake, Pond, Riverine
- Facility Area

Notes: 1. Basemap:USDA NAIP "2017 New York 0.5m" orthoimagery map service. 2. This map was generated in ArcMap on March 15, 2018. 3. This is a color graphic. Reproduction in grayscale may misrepresent the data.



www.edrdpc.com








# Heritage Wind Energy Facility

Town of Barre, Orleans  
County, New York

Preliminary Scoping Statement

Figure 5: Mines and Oil  
and Gas Wells

-  NYSDEC Regulated Mined Land
-  Existing Oil or Gas Well
-  Facility Area

**Notes:** 1. Basemap:ESRI ArcGIS Online "World Topographic Map" map service. 2. This map was generated in ArcMap on March 15, 2018. 3. This is a color graphic. Reproduction in grayscale may misrepresent the data.



www.edrdpc.com

