

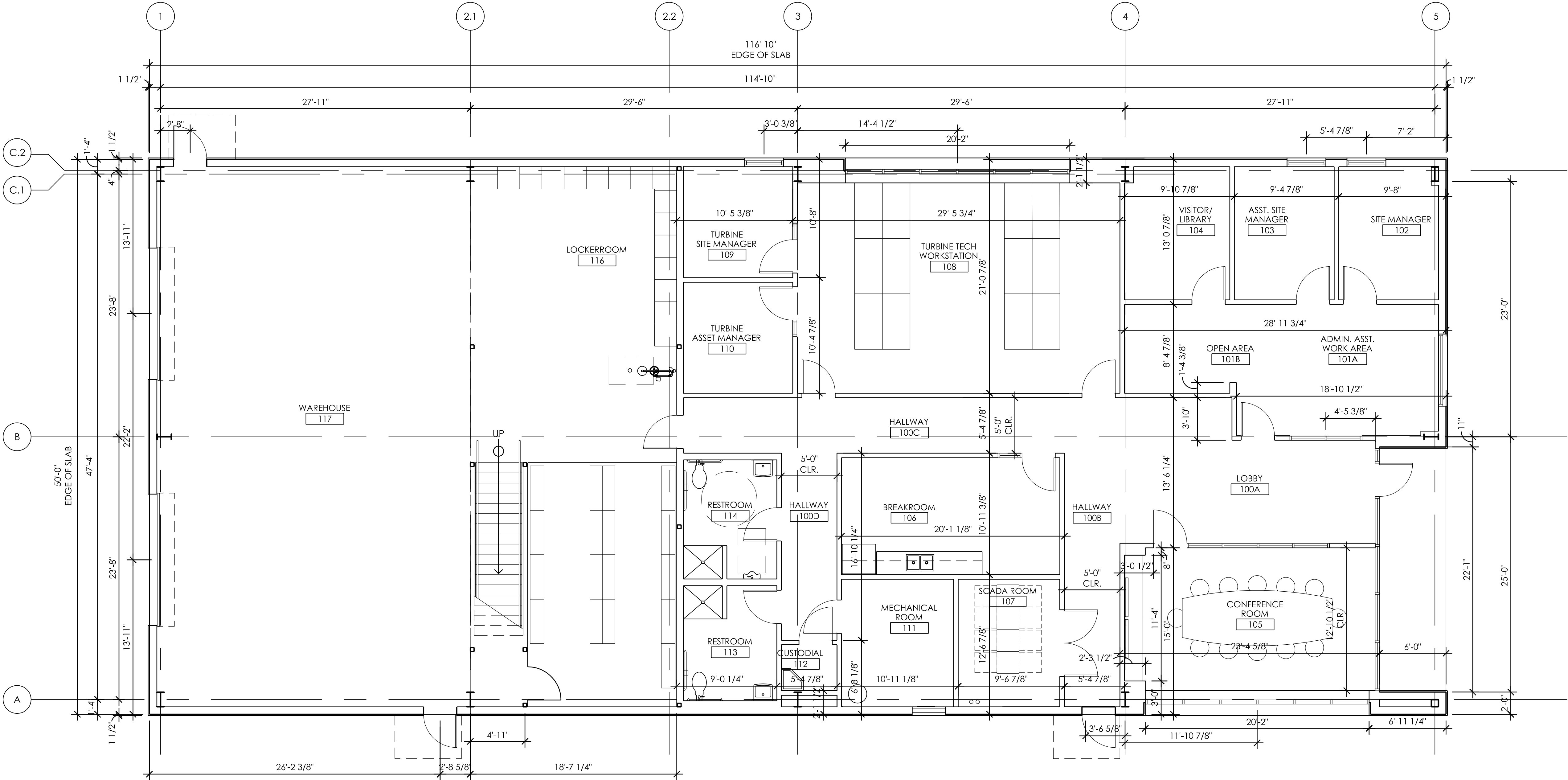
Apex Wind Energy  
300 MW O&M Prototype Building  
Floor Plan "B"

Ownership of Instruments of Service:  
All reports, plans, specifications, computer files, field data, notes & other documents and instruments prepared by Ryden Architecture, LLC as instruments of service shall remain the property of Ryden Architecture, LLC. Ryden Architecture, LLC shall retain all common law, statutory and other reserved rights, including the copyright thereto.

Issue:  
\_\_\_\_\_  
\_\_\_\_\_  
\_\_\_\_\_  
\_\_\_\_\_  
\_\_\_\_\_  
\_\_\_\_\_

Project No. 14024

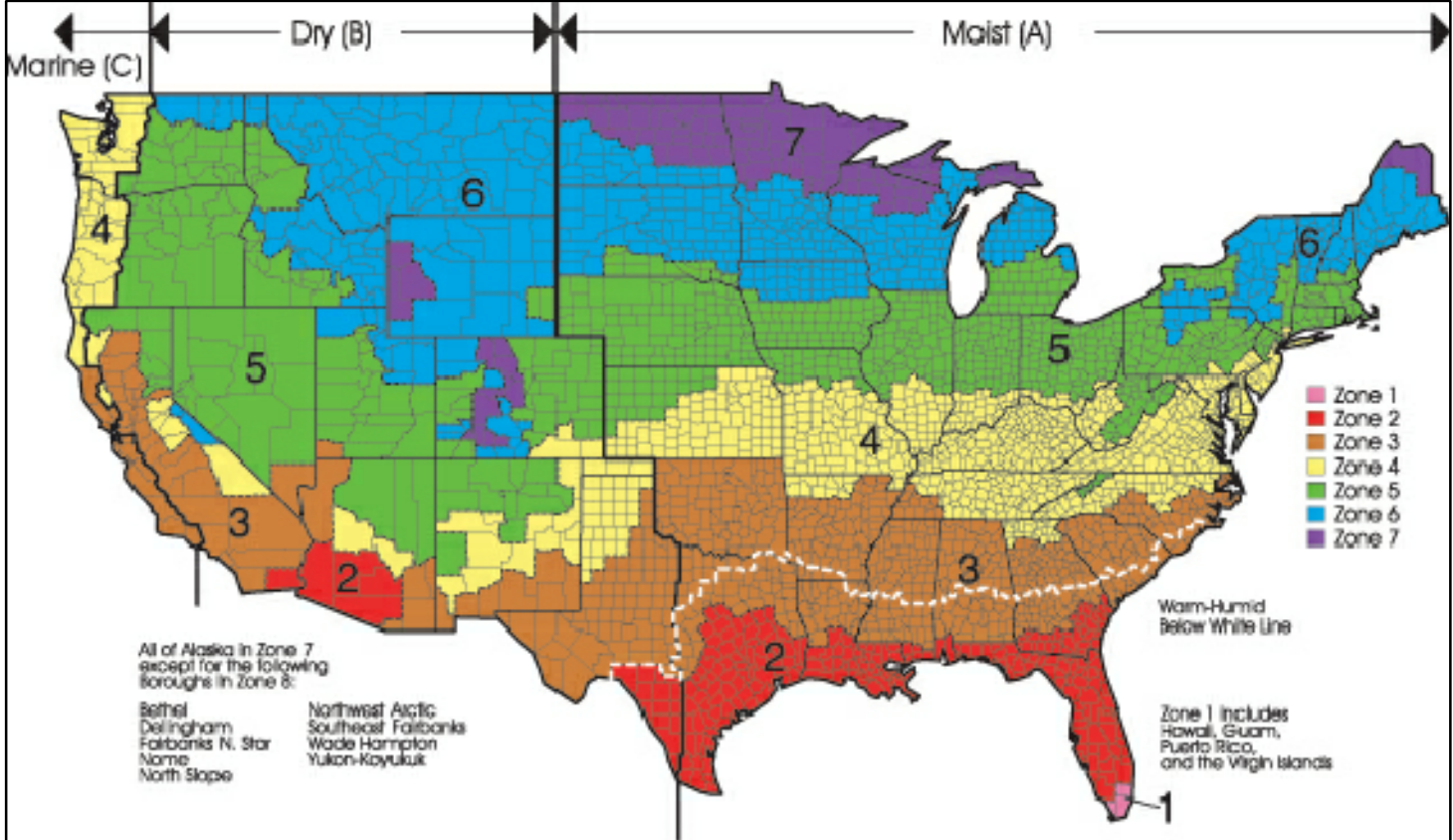
Dimension  
Floor Plan  
Floor Plan "B"  
A.101



FLOOR PLAN 3/16" = 1'-0" 2

OPAQUE THERMAL ENVELOPE REQUIREMENTS FOR METAL BUILDINGS (note 3) BASED ON INTERNATIONAL ENERGY CODE															
IECC PRESCRIPTIVE PERFORMANCE	2006	2009	2012	2006	2009	2012	2006	2009	2012	2006	2009	2012	2006	2009	2012
CLIMATE ZONE	1			2			3			4 (EXCEPT MARINE)			5 (& MARINE 4)		
ASSEMBLY TYPE															
ROOF ASSEMBLY (notes 1 & 2)	R19+R10	R19	R19+R11LS	R19	R13+R13	R19+R11LS	R19	R13+R13	R19+R11LS	R19	R13+R13	R19+R11LS	R19	R13+R13	R25+R11LS
WALL ASSEMBLY (ABOVE GRADE)	R13	R16	R13+R5.6G	R13	R16	R13+R5.6G	R13	R19	R13+R5.6G	R13	R19	R13+R5.6G	R13+R13C	R13+R13	R13+R5.6G
SLAB-ON-GRADE (UNHEATED)		NR			NR			NR			NR		R10 TO 24"	NR	R10 TO 24"
DOORS															
SWINGING	U-0.70	U-0.61	U-0.70	U-0.61	U-0.70	U-0.61	U-0.70	U-0.61	U-0.70	U-0.61	U-0.70	U-0.61	U-0.70	U-0.37	U-0.50
ROLL-UP/COLLING	R0.69	R4.75	R0.69	R4.75	R0.69	R4.75	R0.69	R4.75	R0.69	R4.75	R0.69	R4.75	R2	R4.75	R2

- NOTES:
- Notation (LS) refers to Liner System: a continuous membrane installed below purlins and uninterrupted by framing members. Uncompressed, unfaced insulation rest on top of the membrane between the purlins.
  - At roof assembly, roof at Climate Zone 1 is attached without a thermal spacing block. At Climate Zones 2-8, provide roof with R-5 thermal spacer block.
  - Basis of Design is based on IECC 2009 Zone 1 requirements for Metal Buildings. Building Design shall be modified as required per local jurisdiction & codes.



- FP1. Refer to general information sheets for typical graphical symbols, abbreviation index, and "Master Keynote" list.
- FP2. Typical interior wall type "C.3". Re: A.630.
- FP3. Typical exterior wall at office areas, wall type "P". Re: A.630.
- FP4. All horizontal dimensions are provided on plans, and all vertical dimensions are provided on elevations and/or sections unless otherwise noted.
- FP5. Overall plan indicates exterior building dimensions, room numbers and names, door designations, window designations, exterior elevations designations, exterior plan designations, sign designations, and building section designations. All other plan information is indicated on referenced enlarged plans.
- FP6. Enlarged plans indicate interior building dimensions to face of partition material, interior plan detail designations, interior elevation designations, partition type designations, finish designations, and general building material.
- FP7. All dimensions are to be tied to a column line. Contractor will immediately report any omission of dimensions not tied to a column line to the Architect prior to start of construction.
- FP8. Coordinate all MEP access panels not shown on architectural construction documents with Architect prior to installation.
- FP9. Provide adequate blocking as required at every location where millwork, wall light fixtures, TV brackets, plumbing fixtures, etc., are to be mounted.
- FP10. There are items shown, i.e. outlets, switches, thermostats, on the MEP drawings that are not drawn on the architectural plans. Contractor to coordinate and mount all MEP items per Architectural sheet A.730 unless noted otherwise.
- FP11. All wood blocking to be Fire Resistant
- FP12. Slope concrete to drain at all interior floor drain locations. General Contractor to coordinate finished height of floor drain with sloped slab.

EXTERIOR ENVELOPE REQUIREMENTS BY REGION

5 GENERAL NOTES

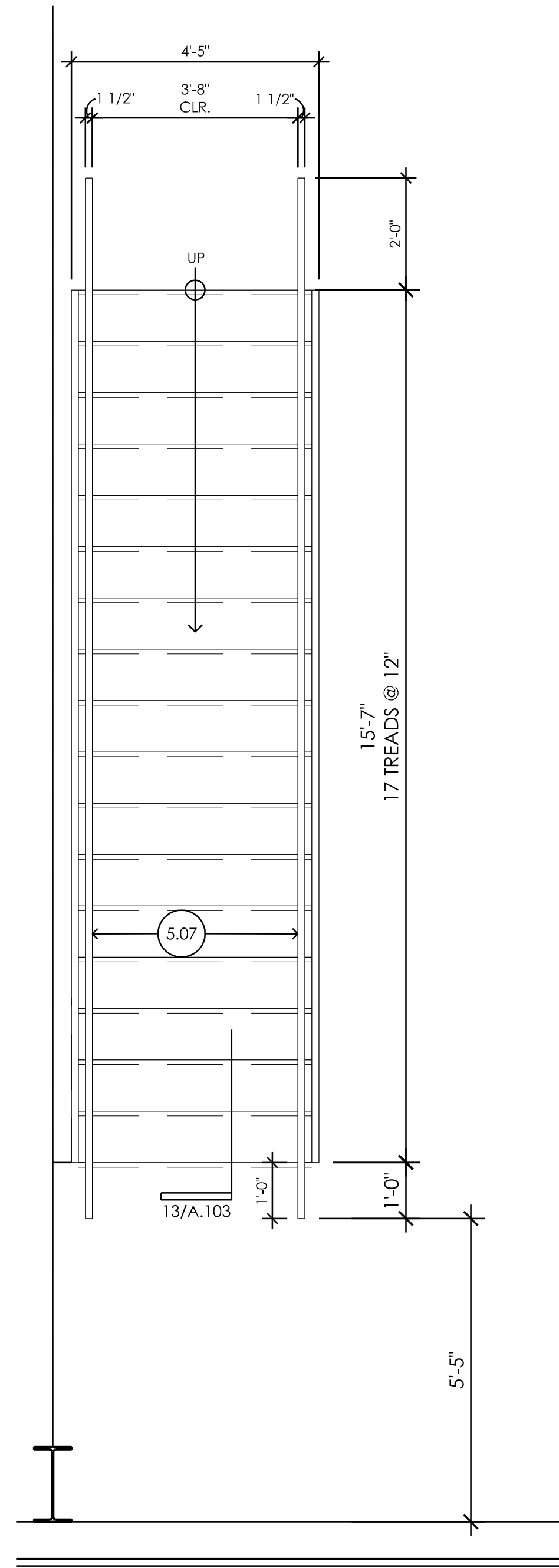
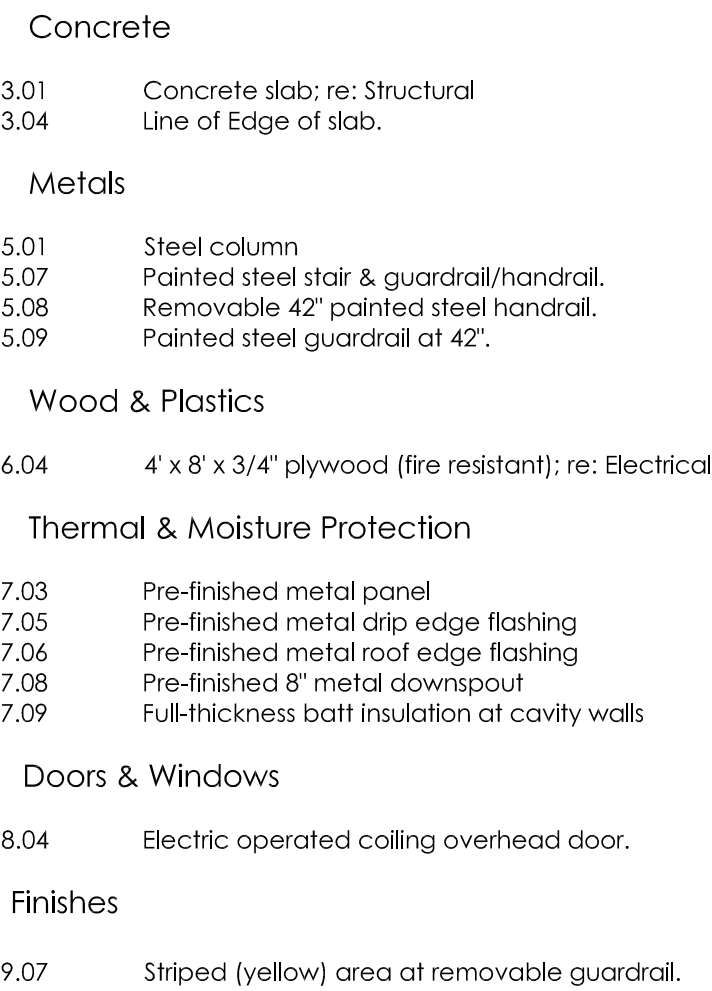
1

**Ownership of Instruments of Service:**  
All reports, plans, specifications, computer files, field data, notes & other documents and instruments prepared by Ryden Architecture, LLC as instruments of service shall remain the property of Ryden Architecture, LLC. Ryden Architecture, LLC shall retain all common law, statutory and other reserved rights, including the copyright thereto.

**Issue:**

## Mezzanine Floor Plan

## A.103


$$3/16'' = 1'-0''$$


## KEYED NOTES

FP1.	Refer to general information sheets for typical graphical symbols, abbreviation index, and "Master Keynote" list.
FP2.	Typical interior wall type "C.3". Re: A.630.
FP3.	Typical exterior wall at office areas, wall type "P". Re: A.630.
FP4.	All horizontal dimensions are provided on plans, and all vertical dimensions are provided on elevations and/or sections unless otherwise noted.
FP5.	Overall plan indicates exterior building dimensions, room numbers and names, door designations, window designations, exterior elevations designations, interior plan designations, sign designations, and building section designations. All other plan information is indicated on referenced enlarged plans.
FP6.	Enlarged plans indicate interior building dimensions to face of partition material, interior plan detail designations, interior elevation designations, partition type designations, finish designations, and general building material.
FP7.	All dimensions are to be tied to a column line. Contractor will immediately report any omission of dimensions not tied to a column line to the Architect prior to start of construction.
FP8.	Coordinate all MEP access panels not shown on architectural construction documents with Architect prior to installation.
FP9.	Provide adequate blocking as required at every location where millwork, wall light fixtures, TV brackets, plume outlets, switches, etc., are to be mounted.
FP10.	There are items shown, i.e. outlets, switches, thermostats, on the MEP drawings that are not drawn on the architectural plans. Contractor to coordinate and mount all MEP items per Architectural sheet A.730 unless noted otherwise.
FP11.	All wood blocking to be Fire Resistant
FP12.	Slope concrete to drain at all interior floor drain locations. General Contractor to coordinate finished height of floor drain with sloped slab.

1





NOTES:

1. Low slope roof surface and color to comply with Energy Star & ASHRAE 90.1-2007 "Cool Roof" reqmts.
2. Wall panel to be run in a vertical direction, perpendicular to the ground plane.
3. Any exposed architectural concrete surfaces to be formed with 1x6 wood material.

## Metals

5.05	Prefinished pre-engineered aluminum canopy & turnbuckle; Fabricator/installer shall provide engineered shop drawings for review.
5.10	Aluminum panel in plane of window wall.

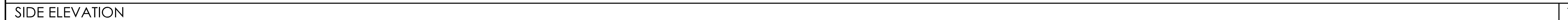
## Thermal & Moisture Protection

7.03	Pre-finished metal panel
7.04	Pre-finished standing seam metal roofing system.
7.06	Pre-finished metal roof edge flashing
7.07	Pre-finished metal gutter
7.08	Pre-finished metal downspout

## Doors & Windows

8.02	Scheduled door frame, Re: A.820
8.03	Scheduled window/frame opening, Re: A.820
8.04	Electric operated coiling overhead door.
8.05	Scheduled louver; Re: MEP

KEYED NOTES	3
-------------	---



**Issue:**

## Exterior Elevations

A.301