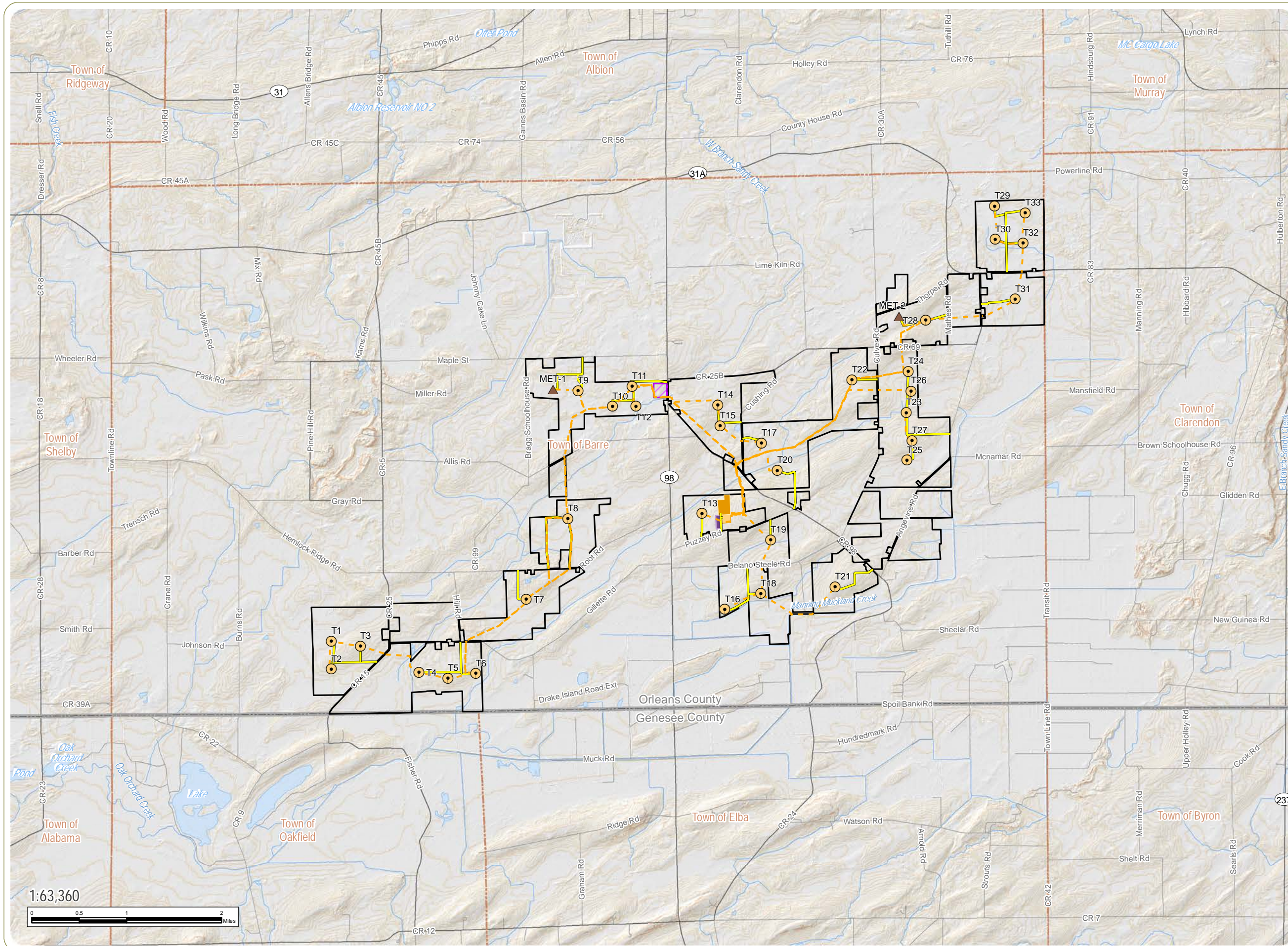


Heritage Wind Project

Town of Barre, Orleans County, New York

Figure 21-1: Slope



- Wind Turbine
- Permanent Met Tower
- Access Road
- Collection Line
- POI Substation
- Collection Substation
- O&M Facility
- Laydown Yard
- Facility Site

- Slope
- 0 - 3%
 - 3 - 8%
 - 8 - 15%

Notes: 1. Basemap: ESRI StreetMap North America, 2008. 2. Percent slope calculated from 10-meter USGS DEM data. 3. This map was generated in ArcMap on February 12, 2020. 4. This is a color graphic. Reproduction in grayscale may misrepresent the data.

